

UNITED STATES
DEPARTMENT OF THE INTERIOR
BUREAU OF LAND MANAGEMENT

APPLICATION FOR PERMIT TO DRILL, DEEPEN, OR PLUG BACK

1A. TYPE OF WORK

DRILL ☐

DEEPEN ☐

PLUG BACK ☒

B. TYPE OF WELL

OIL
WELL ☒

GAS
WELL ☐

OTHER

SINGLE
ZONE ☒

MULTIPLE
ZONE ☐

2. NAME OF OPERATOR

BTA OIL PRODUCERS

3. ADDRESS OF OPERATOR

104 South Pecos, Midland, Texas 79701

4. LOCATION OF WELL (Report location clearly and in accordance with any State requirements.)

At surface

1980' FSL & 1980' FEL

At proposed prod. zone

unit 8

14. DISTANCE IN MILES AND DIRECTION FROM NEAREST TOWN OR POST OFFICE*

25 Miles West from Eunice

15. DISTANCE FROM PROPOSED* LOCATION TO NEAREST PROPERTY OR LEASE LINE, FT. (Also to nearest drlg. unit line, if any)

1980' Sec. line

660' drlg unit

16. NO. OF ACRES IN LEASE

320

17. NO. OF ACRES ASSIGNED TO THIS WELL

40

18. DISTANCE FROM PROPOSED LOCATION* TO NEAREST WELL, DRILLING, COMPLETED, OR APPLIED FOR, ON THIS LEASE, FT.

well #2 1320'

19. PROPOSED DEPTH

13,500' TD 11,665' PB

20. ROTARY OR CABLE TOOLS

Workover Unit

21. ELEVATIONS (Show whether DF, RT, GR, etc.)

3674' GR

3694' KB

Sec. 24, T-20-S, R-34-1

12. COUNTY OR PARISH

Lea

13. STATE

N.M.

23. Existing ~~PROPOSED~~ CASING AND CEMENTING PROGRAM

SIZE OF HOLE	SIZE OF CASING	WEIGHT PER FOOT	SETTING DEPTH	QUANTITY OF CEMENT
26"	20"	94	700'	1225 sx - Circ.
17 1/2"	13 3/8"	61 & 68	3580'	3200 sx - Circ.
12 1/4"	9 5/8"	36 & 40	5500'	1200 sx TOC @ 1900'
8 3/4"	5 1/2"	20	13500'	2600 sx

Proposed:

1. RU Wireline truck. Set CIBP @ 11,700' & cap w/ 35' cmt.
2. Spot 200 gals 10% acetic acid.
3. Perf 1st Bone Spring 9,890' - 9,910' W/ 2 JSPF (41 holes).
4. Swab well to evaluate.

RECEIVED
APR 3 11 27 AM '90
CIBP
AREA

IN ABOVE SPACE DESCRIBE PROPOSED PROGRAM: If proposal is to deepen or plug back, give data on present productive zone and proposed new productive zone. If proposal is to drill or deepen directionally, give pertinent data on subsurface locations and measured and true vertical depths. Give blowout preventer program, if any.

24.

SIGNED

DOROTHY HOUGHTON

TITLE Regulatory Administrator

DATE 4/2/90

(This space for Federal or State office use)

PERMIT NO.

APPROVAL DATE

Orig. signed by: Adam Saleh

APPROVED BY

TITLE

PETROLEUM ENGINEER

DATE

4/12/90

CONDITIONS OF APPROVAL, IF ANY:

RECEIVED

APR 18 1990

OCD
HOBBS OFFICE

NEW MEXICO OIL CONSERVATION COMMISSION
WELL LOCATION AND ACREAGE DEDICATION PLAT

Form C-102
Supersedes C-128
Effective 1-4-65

All distances must be from the outer boundaries of the Section.

Operator BTA OIL PRODUCERS			Lease 8212 JV-P LYNCH		Well No. 1
Unit Letter J	Section 24	Township T-20-S	Range R-34-E	County LEA COUNTY	
Actual Footage Location of Well: 1980 feet from the SOUTH line and 1980 feet from the EAST line					
Ground Level Elev. 3674'	Producing Formation Bone Spring		Pool Wildcat Lea Bone Spr. So.		Dedicated Acreage: 40 Acres

1. Outline the acreage dedicated to the subject well by colored pencil or hatchure marks on the plat below.
2. If more than one lease is dedicated to the well, outline each and identify the ownership thereof (both as to working interest and royalty).
3. If more than one lease of different ownership is dedicated to the well, have the interests of all owners been consolidated by communitization, unitization, force-pooling, etc?

☐ Yes ☐ No If answer is "yes," type of consolidation _____

If answer is "no," list the owners and tract descriptions which have actually been consolidated. (Use reverse side of this form if necessary.) _____

No allowable will be assigned to the well until all interests have been consolidated (by communitization, unitization, forced-pooling, or otherwise) or until a non-standard unit, eliminating such interests, has been approved by the Commission.

CERTIFICATION

I hereby certify that the information contained herein is true and complete to the best of my knowledge and belief.

Dorothy Houghton

Name
DOROTHY HOUGHTON

Position
Regulatory Administrator

Company
BTA OIL PRODUCERS

Date
2/28/90

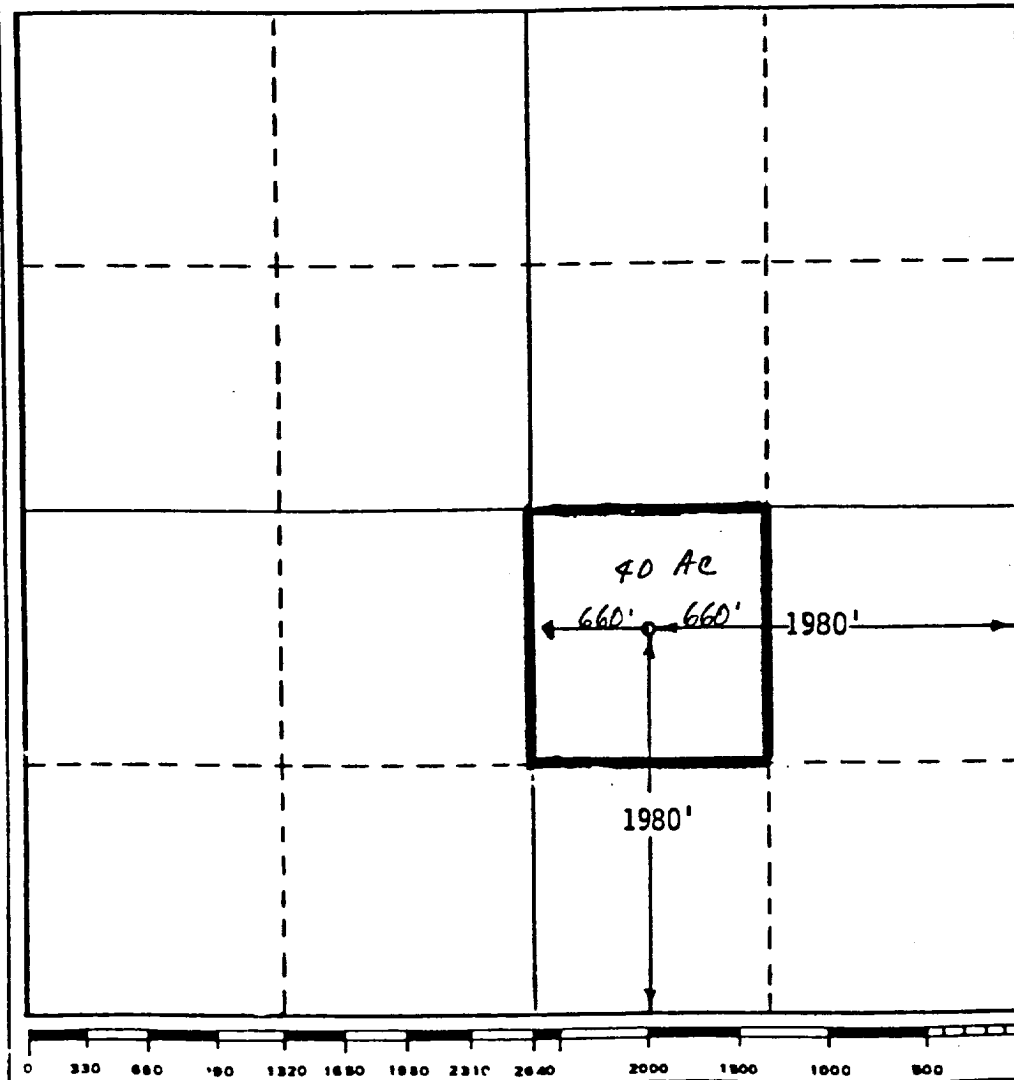
I hereby certify that the well location shown on this plat was plotted from field notes of actual surveys made by me or under my supervision, and that the same is true and correct to the best of my knowledge and belief.

Date Surveyed
APRIL 24, 1984

Registered Professional Engineer and/or Land Surveyor

Gary D. Boswell
Certificate No.

6689



RECEIVED

APR 18 1990

OCD
HOBBS OFFICE