

NO. OF COPIES RECEIVED	
DISTRIBUTION	
SANTA FE	
FILE	
U.S.G.S.	
LAND OFFICE	
OPERATOR	

5A. Indicate Type of Lease  
STATE ☐ FEE ☒  
5. State Oil & Gas Lease No.

APPLICATION FOR PERMIT TO DRILL, DEEPEN, OR PLUG BACK

1a. Type of Work DRILL <input checked="" type="checkbox"/> DEEPEN <input type="checkbox"/> PLUG BACK <input type="checkbox"/>		7. Unit Agreement Name	
b. Type of Well OIL WELL <input checked="" type="checkbox"/> GAS WELL <input type="checkbox"/> OTHER <input type="checkbox"/>		8. Form or Lease Name South Hobbs (GSA) Unit	
2. Name of Operator AMOCO PRODUCTION COMPANY		9. Well No. 184	
3. Address of Operator P. O. Box 68, Hobbs, New Mexico 88240		10. Field and Pool, or Wildcat Hobbs GSA	
4. Location of Well SL/BHL UNIT LETTER F LOCATED 1766/2630 FEET FROM THE North LINE AND 2480/2630 FEET FROM THE West LINE OF SEC. 5 TWP. 19-S RGE. 38-E		12. County Lea	
11. Elevations (show whether DT, KL, etc.) 3618.9 GR		19. Proposed Depth 4500'	
21A. Kind & Status Plug. Bond blanket-on-file		19A. Formation Grayburg-San Andres	
21B. Drilling Contractor N/A		20. Rotary or C.T. Rotary	
22. Approx. Date Work will start			

PROPOSED CASING AND CEMENT PROGRAM

SIZE OF HOLE	SIZE OF CASING	WEIGHT PER FOOT	SETTING DEPTH	SACKS OF CEMENT	EST. TOP
11" or 12-1/4"	8-5/8"	24#	1600'	circulate	surface
7-7/8"	5-1/2"	15.5#	4500'	circulate	surface

Propose to drill and equip well in the Grayburg-San Andres formation. After reaching TD, logs will be run and evaluated. Perforate and/or stimulate as necessary in attempting commercial production.

Mud Program: 0' - 1600' Native  
1600' - 3800' Brine-Min properties for safe hole condition  
3800' - TD Salt gel/starch

BOP Diagram attached

DD-5 (8N5L)

0+6-NMOCD, Hobbs 1-J. R. Barnett, HOU Rm. 21.156 1-F. J. Nash, HOU Rm. 4.206 1-GCC  
1-Petro Lewis 1-Sun 1-Shell 1-Texaco

ABOVE SPACE DESCRIBE PROPOSED PROGRAM IF PROPOSAL IS TO DEEPEN OR PLUG BACK, GIVE DATA ON PRESENT PRODUCTIVE ZONE AND PROPOSED NEW PRODUCTIVE ZONE. GIVE BLOWOUT PREVENTER PROGRAM, IF ANY.

I hereby certify that the information above is true and complete to the best of my knowledge and belief.

Signed Harry C. Clark Title Assist Admin. Analyst Date 12-20-84

(This space for State Use)

ORIGINAL SIGNED BY JERRY SEXTON

APPROVED BY DISTRICT SUPERVISOR TITLE  DATE JAN - 4 1985

CONDITIONS OF APPROVAL, IF ANY:

NEW MEXICO OIL CONSERVATION COMMISSION  
WELL LOCATION AND ACREAGE DEDICATION PLAT

Form C-102  
Supersedes C-128  
Effective 1-1-65

All distances must be from the outer boundaries of the Section

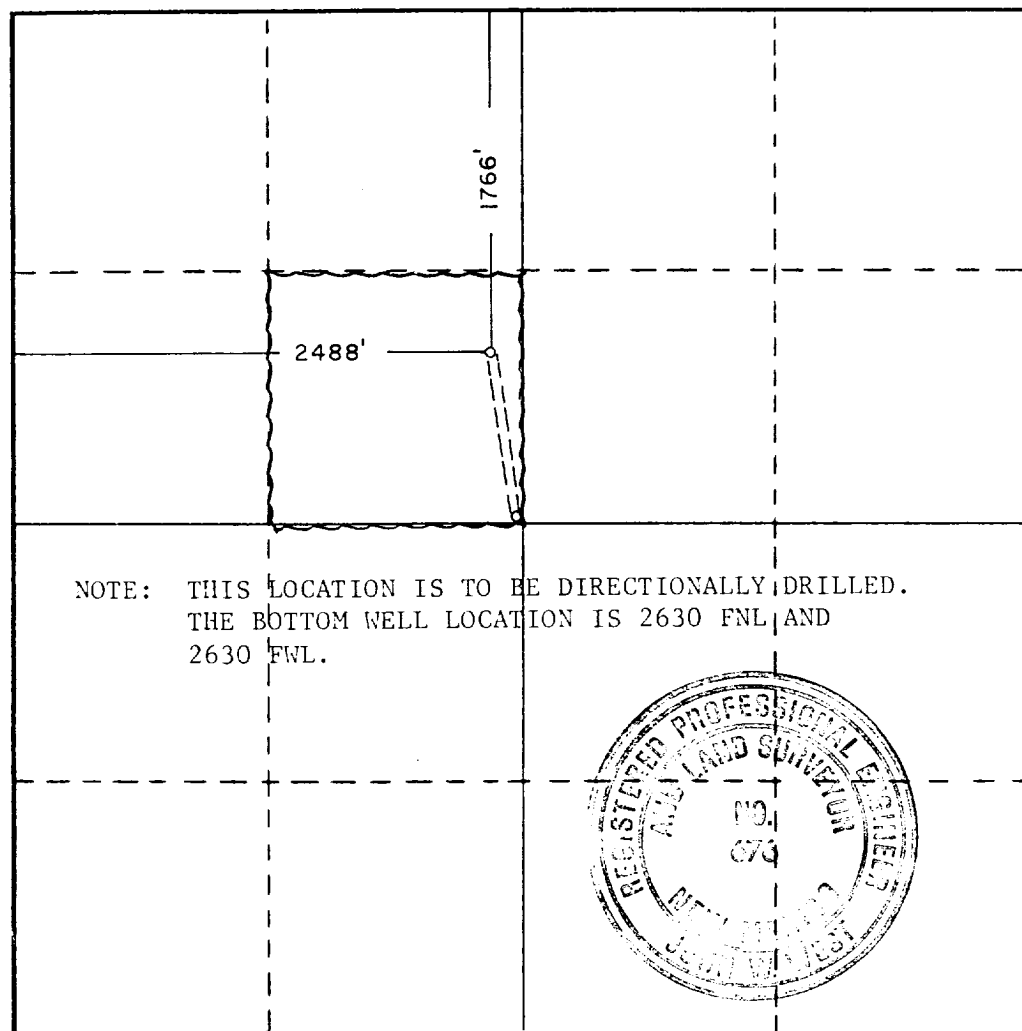
Operator AMOCO PRODUCTION COMPANY			Lease SHGSAU		Well No. 184
Unit Letter F	Section 5	Township 19S	Range 38E	County LEA	
Actual Footage Location of Well: 1766 feet from the NORTH line and 2488 feet from the WEST line					
Ground Level Elev. 3618.9	Producing Formation Grayburg San Andres		Pool Hobbs GSA	Dedicated Acreage: 40 Acres	

1. Outline the acreage dedicated to the subject well by colored pencil or hachure marks on the plat below.
2. If more than one lease is dedicated to the well, outline each and identify the ownership thereof (both as to working interest and royalty).
3. If more than one lease of different ownership is dedicated to the well, have the interests of all owners been consolidated by communitization, unitization, force-pooling, etc?

☒ Yes ☐ No If answer is "yes," type of consolidation Unitization

If answer is "no," list the owners and tract descriptions which have actually been consolidated. (Use reverse side of this form if necessary.)

No allowable will be assigned to the well until all interests have been consolidated (by communitization, unitization, forced-pooling, or otherwise) or until a non-standard unit, eliminating such interests, has been approved by the Commission.



CERTIFICATION

I hereby certify that the information contained herein is true and complete to the best of my knowledge and belief.

Name Harry C. Clark  
Position Assist. Admin. Analyst  
Company AMOCO PRODUCTION COMPANY  
Date 12-6-84

I hereby certify that the well location shown on this plat was plotted from field notes of actual surveys made by me or under my supervision, and that the same is true and correct to the best of my knowledge and belief.

Date Surveyed 11/17/84

Registered Professional Engineer and/or Land Surveyor

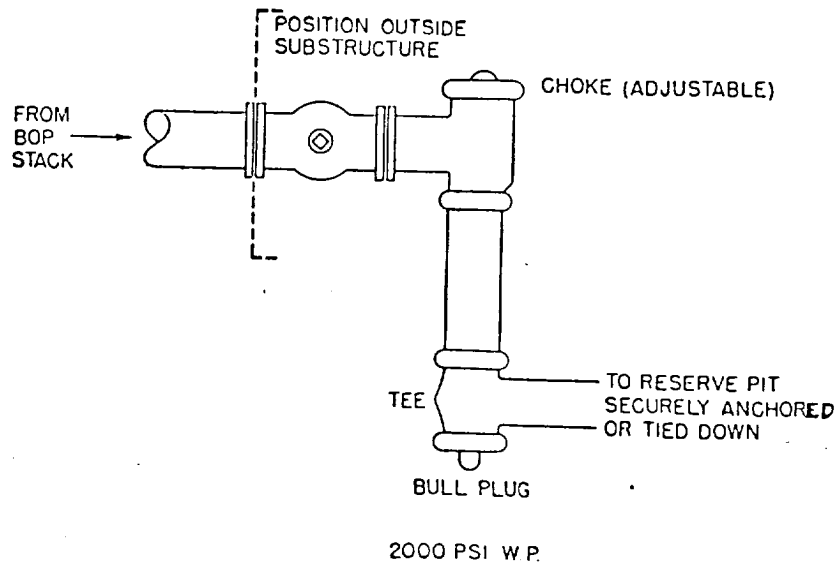
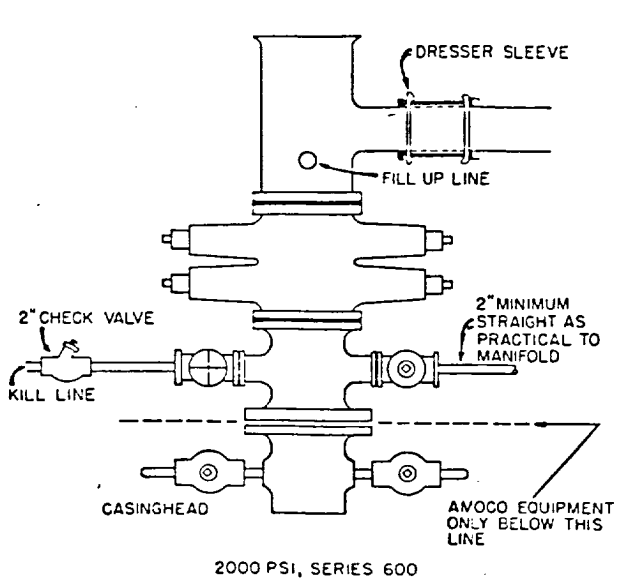
Ronald J. Eidson  
Certificate No. JOHN W. WEST, 676  
RONALD J. EIDSON, 3239



STANDARD 2000 PSI W.P. BOP STACK

1. Blow-out preventers may be manually operated.
2. All equipment must be in good condition, 2,000 psi W.P. (4,000 psi test) minimum.
3. Bell nipple above blow-out preventer shall be same size as casing being drilled through.
4. Kelly cock to be installed on kelly.
5. Full opening safety valve 2,000 psi w.p. (4,000 psi test) minimum must be available on rig floor at all times with proper connection or subs to fit any tool joint in string.
6. Spool or cross may be eliminated if connections are available in the lower part of the blow-out preventer body.
7. Double or space saver type preventers may be used in lieu of two single preventers.
8. BOP rams to be installed as follows:
  - Top preventer - Drill pipe or casing rams
  - Bottom preventer - Blind rams

\*Amoco District Superintendent may reverse location of rams.
9. Extensions and hand wheels to be installed and braced at all times.
10. Manifold valves may be gate or plug metal to metal seal 2" minimum.



*Cement Bond  
Log  
2-7-85*

RECEIVED

DEC 21 1984

8973  
8973  
8973