

NEW MEXICO OIL CONSERVATION COMMISSION
WELL LOCATION AND ACREAGE DEDICATION PLAT

Form C-102
Supersedes C-128
Effective 1-1-65

All distances must be from the outer boundaries of the Section

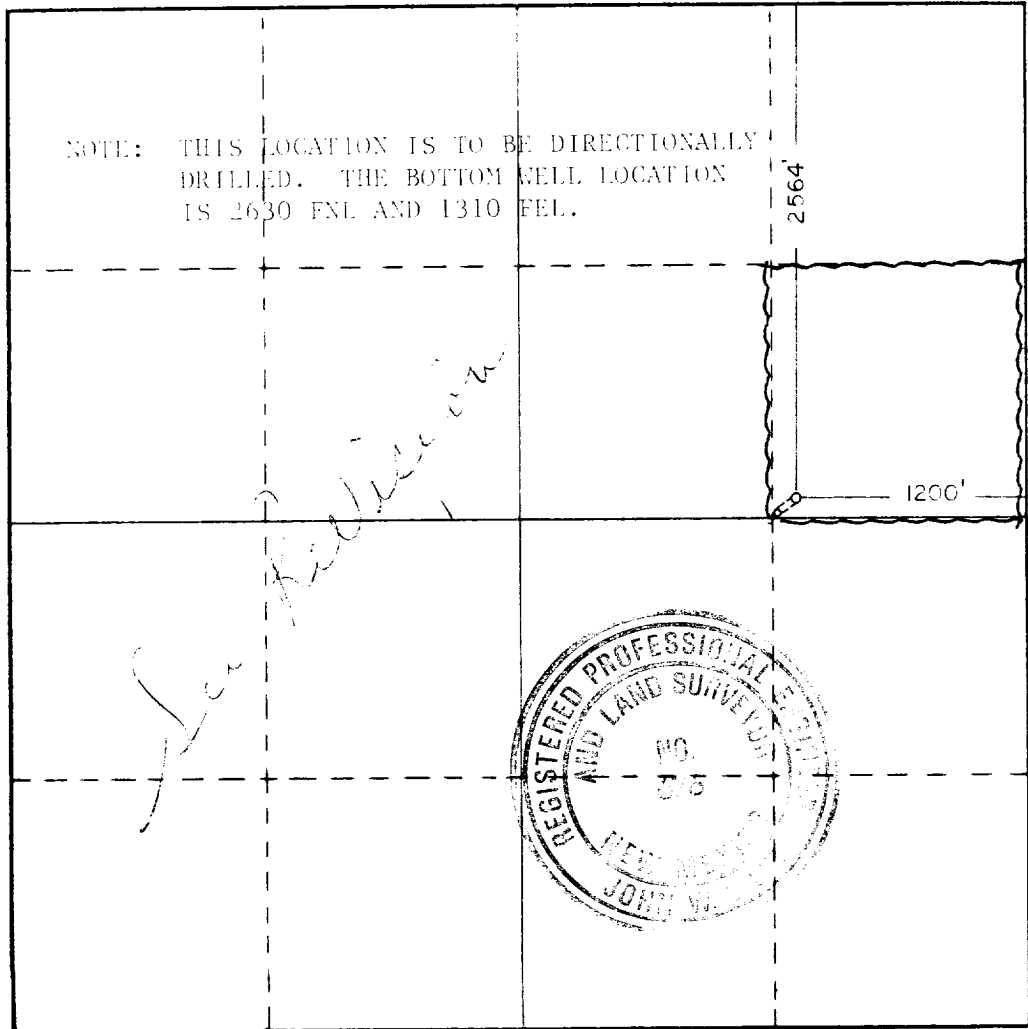
Operator AMOCO PRODUCTION COMPANY		Lease SHGSAU		Well No. 185	
Grid Letter H	Section 5	Township 19S	Range 38E	County LEA	
Actual Footage Location of Well: 2564 feet from the NORTH line and 1200 feet from the EAST line					
Ground Level Elev. 3613.4	Producing Formation Grayburg San Andres		Pool Hobbs GSA	Dedicated Acreage: 40 Acres	

1. Outline the acreage dedicated to the subject well by colored pencil or hachure marks on the plat below.
2. If more than one lease is dedicated to the well, outline each and identify the ownership thereof (both as to working interest and royalty).
3. If more than one lease of different ownership is dedicated to the well, have the interests of all owners been consolidated by communitization, unitization, force-pooling, etc?

Yes No If answer is "yes," type of consolidation Unitization

If answer is "no," list the owners and tract descriptions which have actually been consolidated. (Use reverse side of this form if necessary.) _____

No allowable will be assigned to the well until all interests have been consolidated (by communitization, unitization, forced-pooling, or otherwise) or until a non-standard unit, eliminating such interests, has been approved by the Commission.



CERTIFICATION

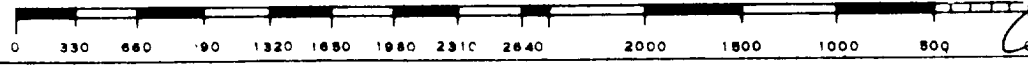
I hereby certify that the information contained herein is true and complete to the best of my knowledge and belief.

Name: Harry C. Clark
 Position: Assist. Admin. Analyst
 Company: AMOCO PRODUCTION COMPANY
 Date: 12-6-84

I hereby certify that the well location shown on this plat was plotted from field notes of actual surveys made by me or under my supervision, and that the same is true and correct to the best of my knowledge and belief.

Date Surveyed: 11/19/84
 Registered Professional Engineer and/or Land Surveyor

John W. West
 Certificate No. JOHN W. WEST, 676
RONALD J. EIDSON, 3239



Temperature
Survey Log
1-11-85
2-7-85

Element, Bond
Log
2-11-85

RECEIVED

DEC 24 1984

HOLY CROSS COLLEGE

