

STATE OF NEW MEXICO  
ENERGY AND MINERALS DEPARTMENT

CONSERVATION DIVISION  
P. O. BOX 2088  
SANTA FE, NEW MEXICO 87501

20-025-19400

Form C-101  
Revised 10-1-78

NO. OF COPIES RECEIVED	
DISTRIBUTION	
SANTA FE	
FILE	
U.S.G.S.	
LAND OFFICE	
OPERATOR	

5A. Indicate Type of Lease  
STATE ☒ FEE ☐  
5. State Oil & Gas Lease No.  
A-1212-1

APPLICATION FOR PERMIT TO DRILL, DEEPEN, OR PLUG BACK

1a. Type of Work b. Type of Well OIL WELL <input checked="" type="checkbox"/> GAS WELL <input type="checkbox"/> OTHER <input type="checkbox"/> SINGLE ZONE <input checked="" type="checkbox"/> MULTIPLE ZONE <input type="checkbox"/>		7. Unit Agreement Name	
2. Name of Operator AMOCO PRODUCTION COMPANY		8. Farm or Lease Name South Hobbs (GSA) Unit	
3. Address of Operator P.O. BOX 68 HOBBS, NEW MEXICO 88240		9. Well No. 203	
4. Location of Well UNIT LETTER <u>L</u> LOCATED <u>1568</u> FEET FROM THE <u>South</u> LINE AND <u>248</u> FEET FROM THE <u>West</u> LINE OF SEC. <u>5</u> TWP. <u>19-S</u> RGE. <u>38-E</u> NMPM		10. Field and Pool, or Wildcat HOBBS GSA	
		12. County LEA	
		19. Proposed Depth 4300'	
		19A. Formation GRAYBURG-SAN ANDRES	
		20. Rotary or C.T. ROTARY	
21. Elevations (show whether Dr., HT, etc.) 3615.5' GL		21A. Kind & Status Plug. Bond BLANKET-ON-FILE	
		21B. Drilling Contractor N/A	
		22. Approx. Date Work will start 4th QUARTER 1985	

PROPOSED CASING AND CEMENT PROGRAM

SIZE OF HOLE	SIZE OF CASING	WEIGHT PER FOOT	SETTING DEPTH	SACKS OF CEMENT	EST. TOP
12-1/4"	8-5/8"	24#	1600'	Circulate to surface	
7-7/8"	5-1/2"	15.5#	4300'	Circulate to surface	

Propose to drill and equip well in the Grayburg-San Andres Formation. After reaching TD, logs will be run and evaluated. Perforate and stimulate as necessary in attempting commercial production. Reference Administrative Order No. NSL-2167.

Mud Program: 0 - 1600' Native Spud Mud  
1600 - 3800' Brine Water  
3800 - 4200' Salt Gel/Starch

Permit Expires 6 Months From Approval  
Date Unless Drilling Underway.

BOP Diagram Attached

O+5 NMOC, H 1-JRB 1-FJN 1-CMH 1-Shell 1-Arco 1-Sun

IN ABOVE SPACE DESCRIBE PROPOSED PROGRAM; IF PROPOSAL IS TO DEEPEN OR PLUG BACK, GIVE DATA ON PRESENT PRODUCTIVE ZONE AND PROPOSED NEW PRODUCTIVE ZONE. GIVE BLOWOUT PREVENTER PROGRAM, IF ANY.

I hereby certify that the information above is true and complete to the best of my knowledge and belief.

Signed Eddie W. Seay Title Administrative Analyst (SG) Date 10-14-85

(This space for State Use)

Eddie W. Seay

APPROVED BY Oil & Gas Inspector TITLE  DATE OCT 16 1985

CONDITIONS OF APPROVAL, IF ANY:

RECEIVED  
OCT 15 1985  
HALL OFFICE

NEW MEXICO OIL CONSERVATION COMMISS  
WELL LOCATION AND ACREAGE DEDICATION PLAT

Form C-102  
Supersedes C-128  
Effective 1-1-65

All distances must be from the outer boundaries of the Section

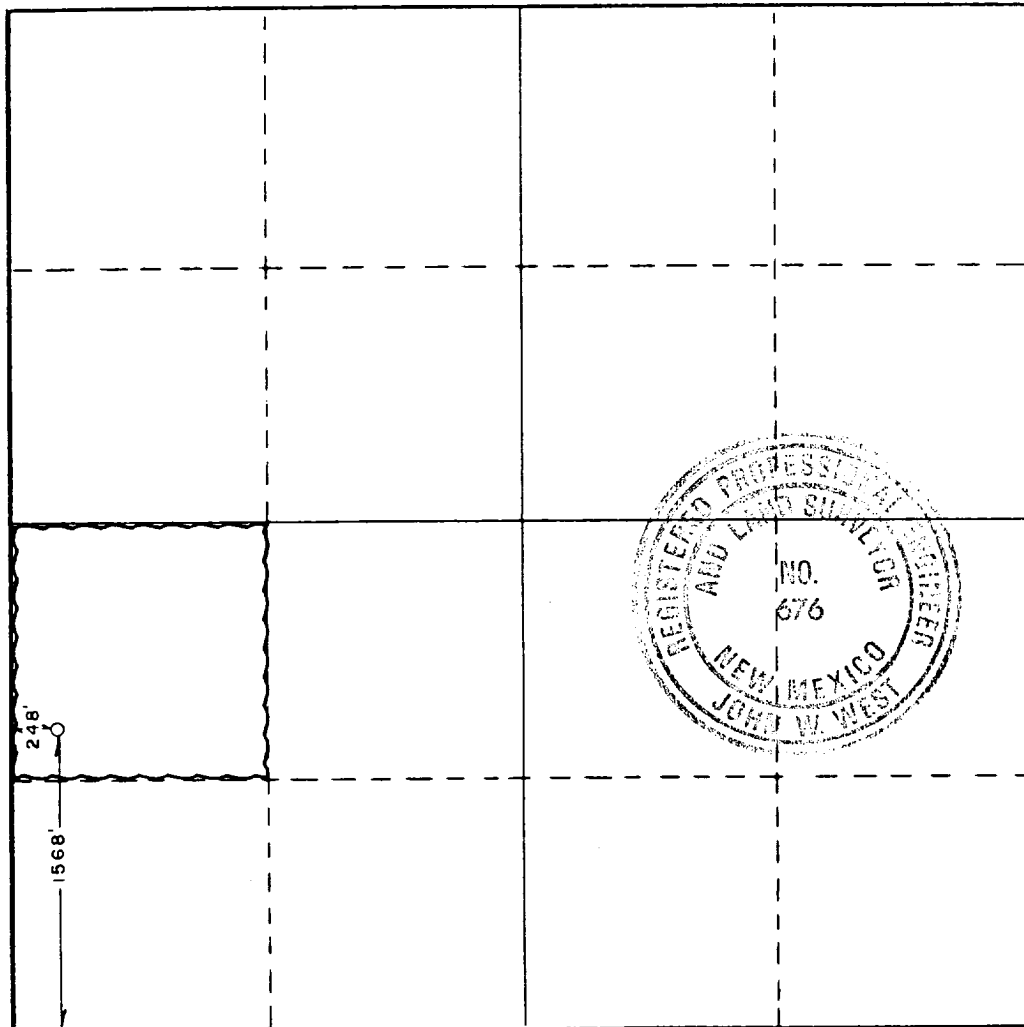
Operator AMOCO PRODUCTION COMPANY		Lease SOUTH HOBBS GRAYBURG SAN ANDRES UNIT		Well No. 203
Unit Letter L	Section 5	Township 19 SOUTH	Range 38 EAST	County LEA
Actual Footage Location of Well: 1568 feet from the SOUTH line and 248 feet from the WEST line				
Ground Level Elev. 3615.5'	Producing Formation <i>Grayburg San Andres</i>	Pool <i>Hobbs GSA</i>	Dedicated Acreage: 40 Acres	

1. Outline the acreage dedicated to the subject well by colored pencil or hachure marks on the plat below.
2. If more than one lease is dedicated to the well, outline each and identify the ownership thereof (both as to working interest and royalty).
3. If more than one lease of different ownership is dedicated to the well, have the interests of all owners been consolidated by communitization, unitization, force-pooling, etc?

☒ Yes ☐ No If answer is "yes," type of consolidation unitization

If answer is "no," list the owners and tract descriptions which have actually been consolidated. (Use reverse side of this form if necessary.)

No allowable will be assigned to the well until all interests have been consolidated (by communitization, unitization, forced-pooling, or otherwise) or until a non-standard unit, eliminating such interests, has been approved by the Commission.



CERTIFICATION

I hereby certify that the information contained herein is true and complete to the best of my knowledge and belief.

Name Charles M. Heering  
Position Administrative Analyst (SG)  
Company Amoco Production Company  
Date 10-14-85

I hereby certify that the well location shown on this plat was plotted from field notes of actual surveys made by me or under my supervision, and that the same is true and correct to the best of my knowledge and belief.

Date Surveyed  
AUGUST 19, 1985

Registered Professional Engineer and/or Land Surveyor

John W. West

Certificate No. JOHN W. WEST, 676  
RONALD J. EIDSON, 3239

RECEIVED

OCT 15 1985

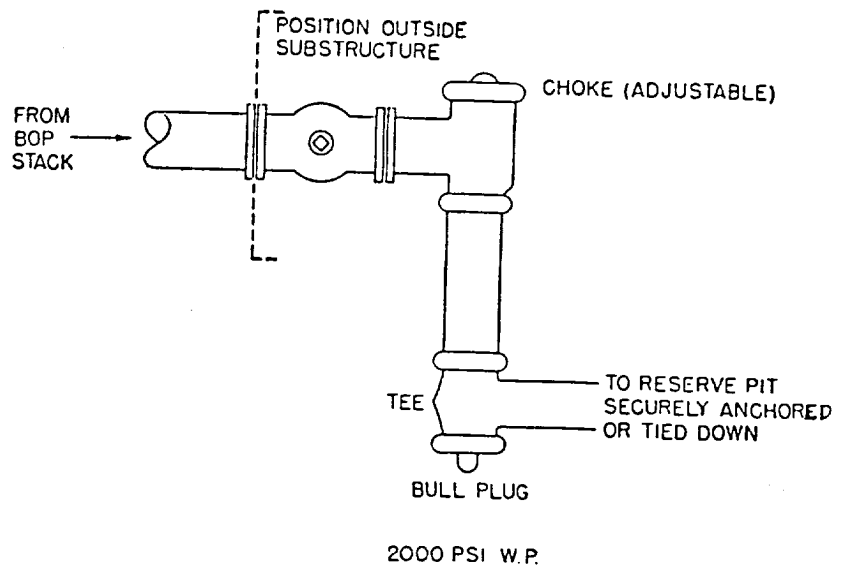
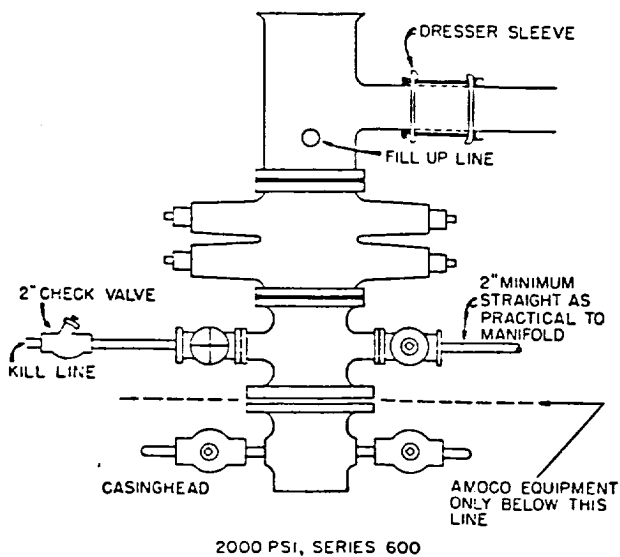
U.S.  
CUSTOMS OFFICE

STANDARD 2000 PSI W.P. BOP STACK

1. Blow-out preventers may be manually operated.
2. All equipment must be in good condition, 2,000 psi W.P. (4,000 psi test) minimum.
3. Bell nipple above blow-out preventer shall be same size as casing being drilled through.
4. Kelly cock to be installed on kelly.
5. Full opening safety valve 2,000 psi w.p. (4,000 psi test) minimum must be available on rig floor at all times with proper connection or subs to fit any tool joint in string.
6. Spool or cross may be eliminated if connections are available in the lower part of the blow-out preventer body.
7. Double or space saver type preventers may be used in lieu of two single preventers.
8. BOP rams to be installed as follows:
 

Top preventer	-	Drill pipe or casing rams
Bottom preventer	-	Blind rams

\*Amoco District Superintendent may reverse location of rams.
9. Extensions and hand wheels to be installed and braced at all times.
10. Manifold valves may be gate or plug metal to metal seal 2" minimum.



177  
10/15/85  
RECEIVED

OCT 15 1985  
O.D.O.  
HODS OFFICE