

OIL CONSERVATION DIVISION
P.O. Box 2088
Santa Fe, New Mexico 87504-2088

DISTRICT I
P.O. Box 1980, Hobbs, NM 88240

DISTRICT II
P.O. Denver CO, Aramis, NM 88210

DISTRICT III
1000 Rio Santos Rd., Artes, NM 87410

WELL API NO.
30-025-29735

3. Indicate Type of Lease
STATE ☒ FEE ☐

4. State Oil & Gas Lease No.
B-3464-2-

7. Lease Name or Unit Agreement Name

NORTH MONUMENT G/SA UNIT
BLK #4

8. Well No.
32

9. Pool name or Wildcat
EUNICEZMONUMENT GB-SA

SUNDRY NOTICES AND REPORTS ON WELLS
(DO NOT USE THIS FORM FOR PROPOSALS TO DRILL OR TO DEEPEN OR PLUG BACK TO A
DIFFERENT RESERVOIR. USE "APPLICATION FOR PERMIT"
(FORM C-101) FOR SUCH PROPOSALS.)

1. Type of Well:
OIL WELL ☒ GAS WELL ☐ OTHER

2. Name of Operator
AMERADA HESS CORPORATION

3. Address of Operator
P.O. DRAWER D, MONUMENT, NEW MEXICO 88265

4. Well Location
Unit Letter P : 330 Feet From The SOUTH Line and 330 Feet From The EAST Line
Section 24 Township 19S Range 36E NMPM LEA County

10. Elevation (Show whether DF, RKB, RT, GR, etc.)

11. Check Appropriate Box to Indicate Nature of Notice, Report, or Other Data

NOTICE OF INTENTION TO:

PERFORM REMEDIAL WORK ☐ PLUG AND ABANDON ☐
TEMPORARILY ABANDON ☐ CHANGE PLANS ☐
PULL OR ALTER CASING ☐
OTHER: ☐

SUBSEQUENT REPORT OF:

REMEDIAL WORK ☐ ALTERING CASING ☐
COMMENCE DRILLING OPNS. ☐ PLUG AND ABANDONMENT ☐
CASING TEST AND CEMENT JOB ☐
OTHER: CASING TEST ☒

12. Describe Proposed or Completed Operations (Clearly state all pertinent details, and give pertinent dates, including estimated date of starting any proposed work) SEE RULE 1103.

06-23-92 THRU 07-21-92

06-23-92: X-PERT WELL SERVICE RIGGED UP PULLING UNIT.

06-24-92: TOH WITH A 1-1/4" x 16' POLISHED ROD WITH A 1-1/2" x 12' LINER, 7/8" x 6' PONY ROD, 2 7/8" x 8' PONY RODS, 60-7/8" SUCKER RODS, 94 3/4" SUCKER RODS AND A 2.0" x 1.5" x 16' PUMP. REMOVED 6" 900 TUBINGHEAD FLANGE AND INSTALLED A MANUAL BOP. TOH WITH 2 2-3/8" x 8' TBG. SUBS, 122 JTS. 2-3/8" SN AND A 2-3/8" MUD JOINT. TIH WITH A 4-3/4" DRILL BIT AND BIT SUB ON 124 JTS. 2-3/8" TBG. TAGGED UP AT 3,940', FOR 5' OF FILL. TOH WITH 124 JTS. 2-3/8" TBG., BIT SUB AND BIT. TIH WITH A 5-1/2" ELDER LOK-SET RETRIEVABLE BRIDGE PLUG, RETRIEVING TOOL AND SN ON 116 JTS. SET RBP AT 3,713' AND CIRCULATED HOLE WITH 90 BBLS. FRESH WATER. PRESSURE TESTED CASING FROM 0' TO 3,713'. PRESSURE DECREASED FROM 540 PSI TO 240 PSI IN 7 MINS. TOH WITH 116 JTS. 2-3/8" TBG., SN AND RETRIEVING TOOL. TIH WITH A 5-1/2" ELDER FULLBORE PACKER AND SN ON 114 JTS. 2-3/8" TBG. SET PKR. AT 3,654'. PRESSURE TESTED RBP AT 3,713' (CONTINUED ON BACK)

I hereby certify that the information above is true and complete to the best of my knowledge and belief.

SIGNATURE Terry L. Harvey TITLE STAFF ASSISTANT DATE 07-21-92
TYPE OR PRINT NAME TERRY L. HARVEY TELEPHONE NO. (505) 393-2144

(This space for State Use)

ORIGINAL SIGNED BY JERRY SEXTON
DISTRICT I SUPERVISOR

AUG 21 '92

APPROVED BY _____ TITLE _____ DATE _____

CONDITIONS OF APPROVAL, IF ANY:

AND PRESSURE DECREASED 300 PSI IN 7 MINS. FOUND TBG. AND CASING IN COMMUNICATION, INDICATING A TUBING LEAK. DROPPED SV, PRESSURE TESTED TBG. AND FOUND TBG. LEAKING. PRESSURE TESTED CASING FROM 0' TO 3,713', WITH SV IN SN AND TBG. CLOSED IN. PRESSURE DECREASED FROM 515 PSI TO 510 PSI IN 30 MINS. CHECKED SURFACE-PRODUCTION CASING ANNULUS AND FOUND NO PRESSURE OR FLOW.

06-25-92: RETRIEVED SV. TOH WITH 114 JTS. 2-3/8" TBG., SN AND 5-1/2" ELDER FULLBORE PACKER. TIH WITH RETRIEVING TOOL ON 116 JTS. 2-3/8" TBG. RELEASED RBP AT 3,713'. TOH WITH 116 JTS. 2-3/8" TBG., RETRIEVING TOOL AND 5-1/2" ELDER LOK-SET RBP. HYDROTESTED TUBING IN HOLE TO 5,000 PSI ABOVE THE SLIPS. LOCATED HOLE IN BOTTOM TBG. JT. OPPOSITE PUMP DISCHARGE. TIH WITH A 2-3/8" PERFORATED MUD JOINT, 2-3/8" SN, 2-7/8" SALTA LINED JOINT, 121 JTS. 2-3/8" TBG. AND 2 2-3/8" x 8' TBG. SUBS. REMOVED BOP AND INSTALLED 6" 900 TUBINGHEAD. SET TBG. AT 3,931' AND SN AT 3,924'. TIH WITH A 2" x 1.5" x 12' TWBC PUMP #A-1004, 94-3/4" SUCKER RODS, 60-7/8" SUCKER RODS, 2-7/8" x 8' PONY RODS, 7/8" x 6' PONY ROD, 7/8" x 4' PONY ROD AND A 1-1/4" x 16' POLISHED ROD WITH A 1-1/2" x 12' LINER. LOADED TBG. WITH FRESH WATER AND CHECKED PUMP ACTION. RIGGED DOWN PULLING UNIT AND CLEANED LOCATION.

06-26-92 THRU 07-20-92: PUMPING. HOLD OPEN FOR TEST.

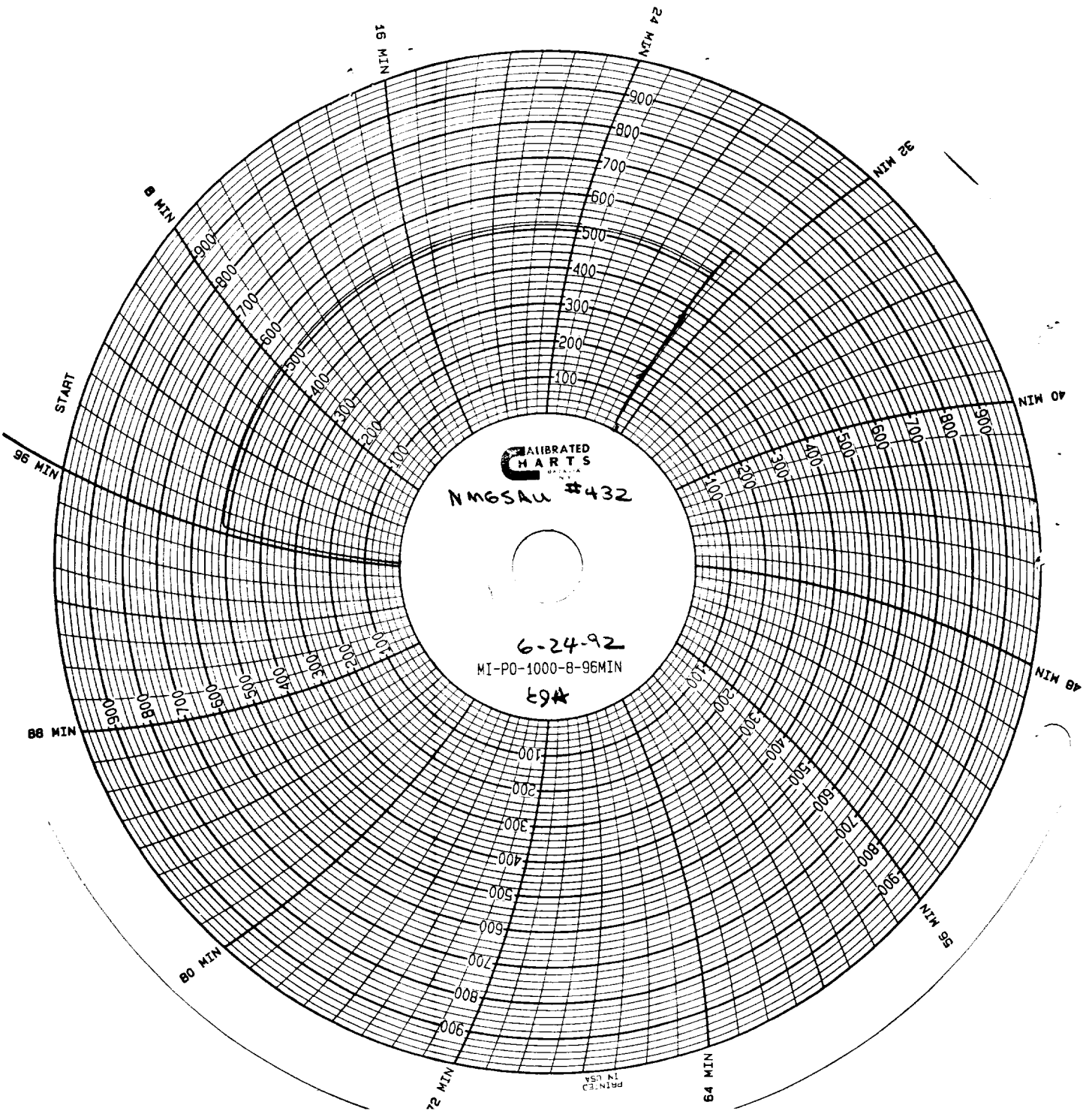
07-21-92: 24 HOUR TEST

24 BOPD AND 145 BWPD

RECEIVED

AUG 26 1992

COO HOBBS OFFICE



RECEIVED
AUG 20 1992
OCD HOBBS OFFICE