

MEXICO OIL CONSERVATION COMMISSION
WELL LOCATION AND ACREAGE DEDICATION PLAT

Form C-102
Supersedes C-128
Effective 1-1-65

All distances must be from the outer boundaries of the Section

Operator Amoco Production Company			Lease South Hobbs (G-SA) Unit		Well No. 217
Unit Letter G	Section 4	Township 19 South	Range 38 East	County Lea County	
Actual Footage Location of Well: 1407 feet from the North line and 2203 feet from the East line					
Ground Level Elev. 3615.6	Producing Formation Grayburg - San Andres		Pool Hobbs GSA	Dedicated Acreage: 40 Acres	

1. Outline the acreage dedicated to the subject well by colored pencil or hachure marks on the plat below.
2. If more than one lease is dedicated to the well, outline each and identify the ownership thereof (both as to working interest and royalty).
3. If more than one lease of different ownership is dedicated to the well, have the interests of all owners been consolidated by communitization, unitization, force-pooling, etc?

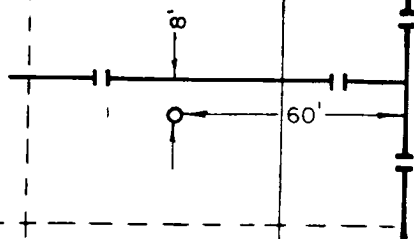
☒ Yes ☐ No If answer is "yes," type of consolidation Unitization

If answer is "no," list the owners and tract descriptions which have actually been consolidated. (Use reverse side of this form if necessary.)

No allowable will be assigned to the well until all interests have been consolidated (by communitization, unitization, forced-pooling, or otherwise) or until a non-standard unit, eliminating such interests, has been approved by the Commission.

Note: There was a 100' x 100' area M-scoped around this location and the pipelines shown in the inset were found.

Note: This well is to be directionally drilled. The bottom hole location will be 1030' F.N.L. and 1575' F.E.L.



Inset



CERTIFICATION

I hereby certify that the information contained herein is true and complete to the best of my knowledge and belief.

Name Joe Boudell
Position Administrative Analyst

Company Amoco Production Company

Date September 5, 1986

I hereby certify that the well location shown on this plat was plotted from field notes of actual surveys made by me or under my supervision, and that the same is true and correct to the best of my knowledge and belief.

Date Surveyed July 23, 1986

Registered Professional Engineer and/or Land Surveyor

Certificate No. JOHN W. WEST, 676
RONALD J. EIDSON, 3239