

NEW MEXICO OIL CONSERVATION COMMISSION  
WELL LOCATION AND ACREAGE DEDICATION PLAT

Form C-102  
Supersedes C-128  
Effective 1-1-65

All distances must be from the outer boundaries of the Section

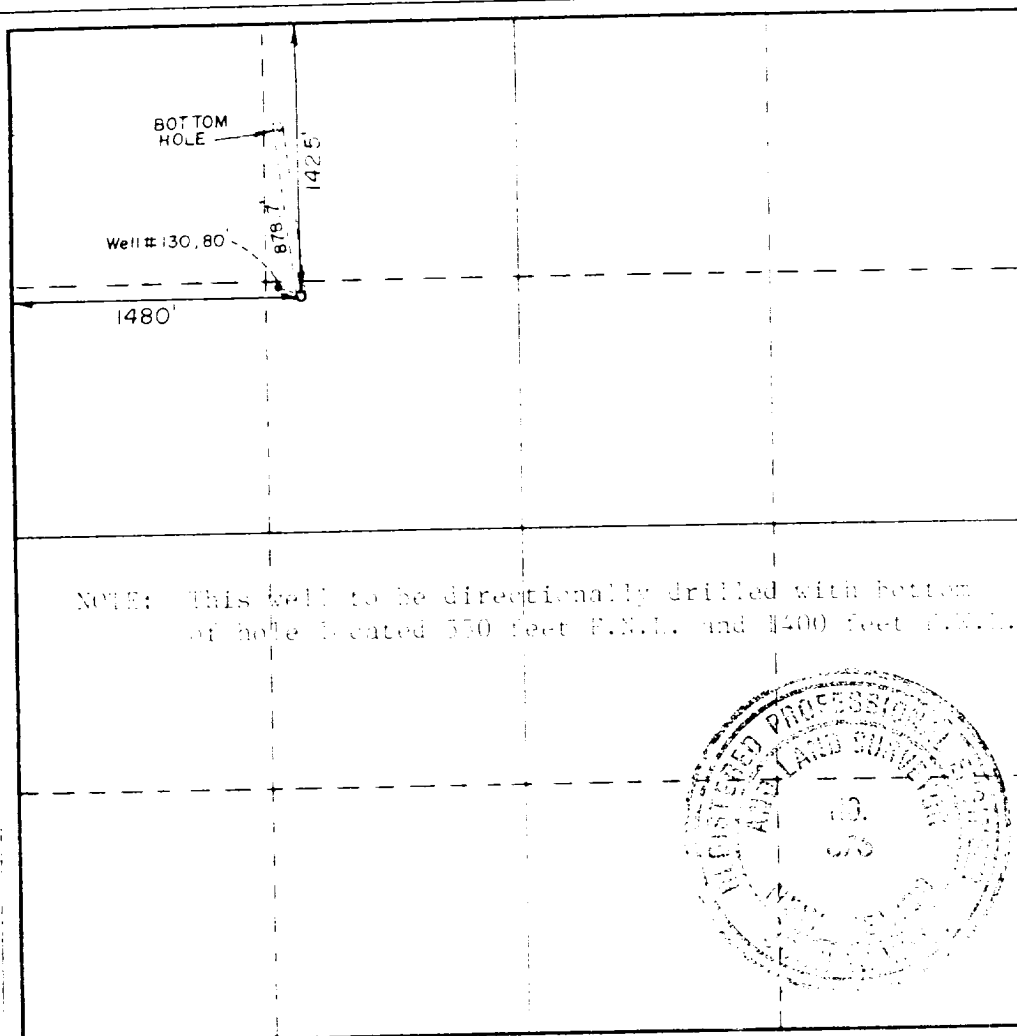
Operator Amoco Production Company		Lease SHGSAU		Well No. #220
Tract Letter F	Section 4	Township 19 South	Range 38 East	County Lea
Actual Footage Location of Well: 1425 feet from the North line and 1480 feet from the West line				
Ground Level Elev. 3616.2	Producing Formation Grayburg San Andres	Pool Holla Field	Estimated Acreage 40 Acres	

1. Outline the acreage dedicated to the subject well by colored pencil or hachure marks on the plat below.
2. If more than one lease is dedicated to the well, outline each and identify the ownership thereof (both as to working interest and royalty).
3. If more than one lease of different ownership is dedicated to the well, have the interests of all owners been consolidated by communitization, unitization, force-pooling, etc?

☐ Yes ☐ No If answer is "yes," type of consolidation \_\_\_\_\_

If answer is "no," list the owners and tract descriptions which have actually been consolidated (Use reverse side of this form if necessary.) \_\_\_\_\_

No allowable will be assigned to the well until all interests have been consolidated (by communitization, unitization, forced-pooling, or otherwise) or until a non-standard unit, eliminating such interests, has been approved by the Commission.



CERTIFICATION

I hereby certify that the information contained herein is true and complete to the best of my knowledge and belief

By Lee Browder  
Admin Analyst  
Amoco Production Co.  
4/3/87

I hereby certify that the well location shown on this plat was plotted from field notes of actual surveys made by me or under my supervision, and that the same is true and correct to the best of my knowledge and belief

I am a surveyor  
March 20, 1987  
Registered Professional Engineer and Land Surveyor  
Ronald J. Eidson  
Certificate No. JOHN W. WEST, 676  
RONALD J. EIDSON, 3239