

DISTRICT I

P.O. Box 1980, Hobbs, NM 88241-1980

DISTRICT II

P.O. Box Drawer DD, Artesia, NM 88211-0719

DISTRICT III

1000 Rio Brazos Rd., Aztec, NM 87410

DISTRICT IV

P.O. Box 2088, Santa Fe, NM 87504-2088

State of New Mexico

Energy, Minerals and Natural Resources Depart

Form C-10 (

Revised February 10, 199

Instructions on back

Submit to Appropriate District Office

State Lease - 6 Copie

Fee Lease - 5 Copie

AMENDED REPORT

OIL CONSERVATION DIVISION

P.O. Box 2088

Santa Fe, New Mexico 87504-2088

APPLICATION FOR PERMIT TO DRILL, RE-ENTER, DEEPEN, PLUGBACK, OR ADD A ZONE

¹ Operator Name and Address TEXACO EXPLORATION & PRODUCTION INC. 205 E. Bender, HOBBS, NM 88240 <i>P.O. Box 3109, Midland, TX, 79702</i>		² OGRID Number 022351
⁴ Property Code 11002	⁵ Property Name MONSTATE	³ API Number 30-025-30063
		⁶ Well No. 6

⁷ Surface Location									
UI or lot no	Section	Township	Range	Lot.Idn	Feet From The	North/South Line	Feet From The	East/West Line	County
J	13	19S	36E		1980	SOUTH	1750	EAST	LEA

⁸ Proposed Bottom Hole Location If Different From Surface									
UI or lot no	Section	Township	Range	Lot.Idn	Feet From The	North/South Line	Feet From The	East/West Line	County
⁹ Proposed Pool 1 EUMONT YATES 7 RIVERS QUEEN (PRO GAS)					¹⁰ Proposed Pool 2				

¹¹ Work Type Code P	¹² WellType Code G	¹³ Rotary or C.T.	¹⁴ Lease Type Code S	¹⁵ Ground Level Elevation 3717'
¹⁶ Multiple No	¹⁷ Proposed Depth 4190'	¹⁸ Formation 7 RVRS QUEEN	¹⁹ Contractor	²⁰ Spud Date 3/15/01

²¹ Proposed Casing and Cement Program					
SIZE OF HOLE	SIZE OF CASING	WEIGHT PER FOOT	SETTING DEPTH	SACKS OF CEMENT	EST. TOP
17-1/2"	13-3/8"	48#, 54.5#	1635'	1850	CEMENT CIRC.
12-1/4"	9-5/8"	36#, 40#	4000'	1300	CEMENT CIRC.
8-3/4"	7"	23#, 26#	7196'	1150	CEMENT CIRC.
6-1/8"	5" (LINER)	23#	6901'-8600'	275	TO TOL

²² Describe the proposed program. If this application is to DEEPEN or PLUG BACK give the data on the present productive zone and proposed new productive zone. Describe the blowout prevention program, if any. Use additional sheets if necessary.

TEXACO INTENDS TO RECOMPLETE THE SUBJECT WELL TO THE EUMONT YATES 7 RIVERS QUEEN (PRO GAS). THE INTENDED PROCEDURE IS AS FOLLOWS:

- 1) MIRU PU. NUBOP. TIH W/CIBP & SET @ 6725'. (30' ABOVE DRINKARD PERFS @ 6756-6780). DUMP 35' CMT ON PLUG. TIH W/CIBP & SET @ 5100' (25' ABOVE LOWER SAN ANDRES PERFS @ 5124-5162). DUMP 35' CMT ON PLUG. TIH W/CIBP & SET @ 4175' (25' ABOVE UPPER SAN ANDRES PERFS 4200-4367'. DUMP 35' CMT ON PLUG.
- 2) TIH & PERF 3610-3700. TIHW/PKR & SET @ 3585'. SPOT ACID TO 3250 & ACIDIZE YATES SEVEN RIVERS QUEEN W/2,000 GALS 15% HCL. REL PKR.
- 3) TIH W/FRAC PKR & SET @ 3585'. FRAC FORMATION W/135 M# 16/30 SAND. FLOW BACK FRAC FLUIDS BLOW DN CO2.
- 4) TIH W/PROD TBG & SWAB WELL.

Permit Expires 1 Year From Approval
Date Unless Drilling Underway

²³ I hereby certify that the rules and regulations of the Oil Conservation Division have been complied with and that the information given above is true and complete to the best of my knowledge and belief.		OIL CONSERVATION DIVISION	
Signature <i>J. Denise Leake</i>	Approved By: ORIGINAL SIGNED BY		
Printed Name J. Denise Leake	Title: NATURAL	Title:	
Title Engineering Assistant	Approval Date:	Expiration Date:	
Date 3/5/01	Telephone 397-0405	Conditions of Approval 2001	

DISTRICT I

P.O. Box 1980, Hobbs, NM 88241-1980

DISTRICT II

P.O. Box Drawer DD, Artesia, NM 88211-C719

DISTRICT III

1000 Rio Brazos Rd., Aztec, NM 87410

DISTRICT IV

P.O. Box 2088, Santa Fe, NM 87504-2088

State of New Mexico
Energy, Minerals and Natural Resources Department

Form C-10 2

Revised February 10, 1999

Instructions on back

Submit to Appropriate District Office

State Lease - 4 Copy

Fee Lease - 3 Copy

AMENDED REPORT

OIL CONSERVATION DIVISION

P.O. Box 2088

Santa Fe, New Mexico 87504-2088

WELL LOCATION AND ACREAGE DEDICATION PLAT

1 API Number 30-025-30063	2 Pool Code 76480	3 Pool Name EUMONT YATES 7 RIVERS QUEEN (PRO GAS)
4 Property Code 11002	5 Property Name MONSTATE	6 Well No. 6
7 OGRID Number 022351	8 Operator Name TEXACO EXPLORATION & PRODUCTION INC.	9 Elevation 3717'

10 Surface Location

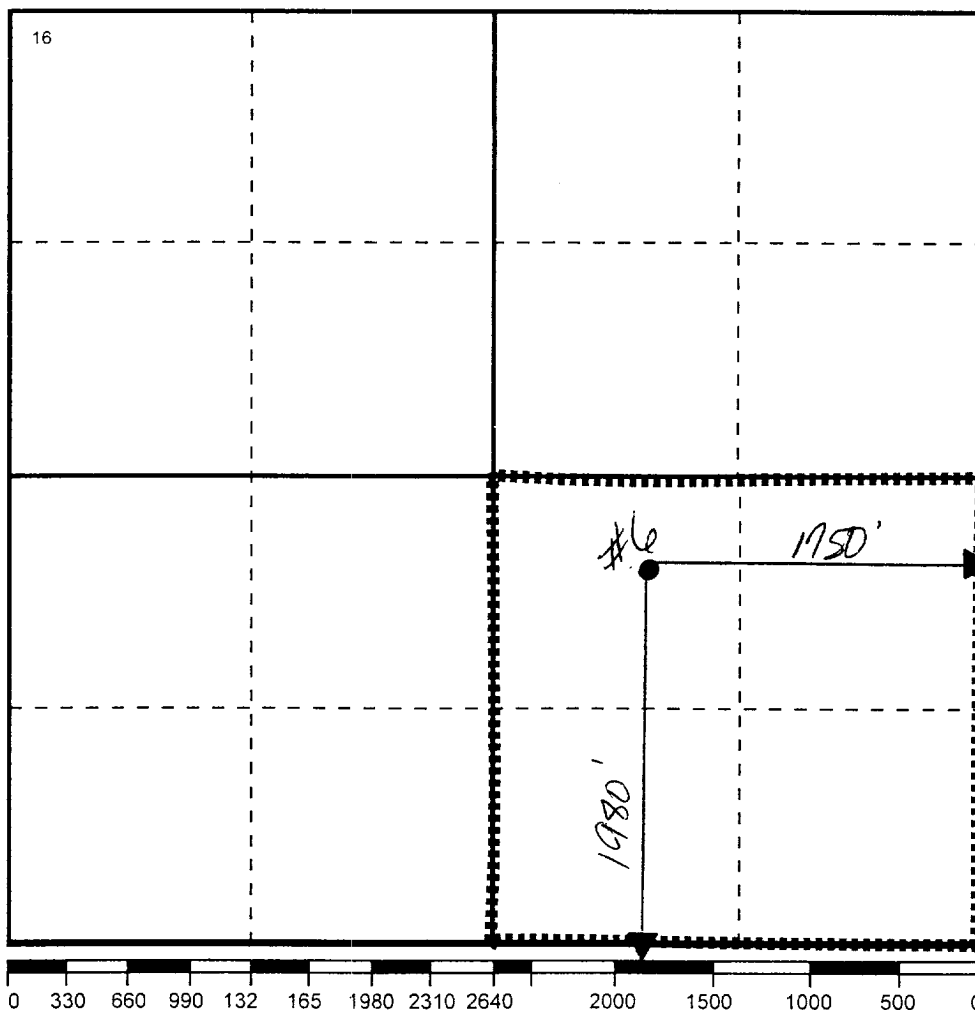
UI or lot no	Section	Township	Range	Lot.Idn	Feet From The	North/South Line	Feet From The	East/West Line	County
J	13	19S	36E		1980	SOUTH	1750	EAST	LEA

11 Bottom Hole Location If Different From Surface

UI or lot no	Section	Township	Range	Lot.Idn	Feet From The	North/South Line	Feet From The	East/West Line	County
--------------	---------	----------	-------	---------	---------------	------------------	---------------	----------------	--------

12 Dedicated Acre 160	13 Joint or Infill No	14 Consolidation Code	15 Order No.
--------------------------	--------------------------	-----------------------	--------------

NO ALLOWABLE WILL BE ASSIGNED TO THIS COMPLETION UNTIL ALL INTERESTS HAVE BEEN CONSOLIDATED
OR A NON-STANDARD UNIT HAS BEEN APPROVED BY THE DIVISION



17 OPERATOR CERTIFICATION

I hereby certify that the information contained herein is true and complete to the best of my knowledge and belief

Signature

Printed Name

J. Denise Leake

Position

Engineering Assistant

Date

3/5/01

18 SURVEYOR CERTIFICATION

I hereby certify that the well location shown on this plat was plotted from field notes of actual surveys made by me or under my supervision, and that the same is true and correct to the best of my knowledge and belief.

Date Surveyed

Signature & Seal of

Professional Surveyor

Certificate No.

MONSTATE #6

1980' FSL, 1750' FEL

SEC 13, TWN 19 S, RANGE 36 E

LEA COUNTY, NEW MEXICO

COST CENTER # 40011400

UPDATED 2/22/01

ELEVATION : 3717 GL

**** Eumont 9/94

COMP INTRVL: 3680 - 3700'

TRT: A/1K 15% NEFE HCL

27.5K 40# LINEAR, 207K# 12/20 Sd, 112T CO2

CURRENT

