

DISTRICT I

P.O. Box 1980, Hobbs, NM 88241-1980

DISTRICT II

P.O. Box Drawer DD, Artesia, NM 88211-0719

DISTRICT III

1000 Rio Brazos Rd., Aztec, NM 87410

DISTRICT IV

P.O. Box 2088, Santa Fe, NM 87504-2088

State of New Mexico

Energy, Minerals and Natural Resources Department

Form C-101

Revised February 10, 1994

Instructions on back

Submit to Appropriate District Office

State Lease - 6 Copies

Fee Lease - 5 Copies

OIL CONSERVATION DIVISION

P.O. Box 2088

Santa Fe, New Mexico 87504-2088

☐ AMENDED REPORT

APPLICATION FOR PERMIT TO DRILL, RE-ENTER, DEEPEN, PLUGBACK, OR ADD A ZONE

1 Operator Name and Address TEXACO EXPLORATION & PRODUCTION INC. 205 E. Bender, HOBBS, NM 88240		2 OGRID Number 022351
4 Property Code 11002		5 Property Name MONSTATE
		3 API Number 30-025-30063
		6 Well No. 6

7 Surface Location

Ul or lot no.	Section	Township	Range	Lot.Idn	Feet From The	North/South Line	Feet From The	East/West Line	County
J	13	19S	36E		1980	SOUTH	1750	EAST	LEA

8 Proposed Bottom Hole Location If Different From Surface

Ul or lot no.	Section	Township	Range	Lot.Idn	Feet From The	North/South Line	Feet From The	East/West Line	County
9 Proposed Pool 1 Wildcat Drinkard					10 Proposed Pool 2				

11 Work Type Code P	12 WellType Code G	13 Rotary or C.T.	14 Lease Type Code S	15 Ground Level Elevation 3717'
16 Multiple No	17 Proposed Depth 4190'	18 Formation Drinkard	19 Contractor	20 Spud Date 11/17/1999

21 Proposed Casing and Cement Program

SIZE OF HOLE	SIZE OF CASING	WEIGHT PER FOOT	SETTING DEPTH	SACKS OF CEMENT	EST. TOP
17-1/2"	13-3/8"	48#, 54.5#	1635'	1850	CEMENT CIRC.
12-1/4"	9-5/8"	36#, 40#	4000'	1300	CEMENT CIRC.
8-3/4"	7"	23#, 26#	7196'	1150	CEMENT CIRC.
6-1/8"	5" (LINER)	23#	6901'-8600'	275	TO TOL

22 Describe the proposed program. If this application is to DEEPEN or PLUG BACK give the data on the present productive zone and proposed new productive zone. Describe the blowout prevention program, if any. Use additional sheets if necessary.

- Texaco intends to temporarily block Eumont zone, drill out cmt & CIBP & squeeze two open San Andres intervals. Intended procedure is as follows:
1. MIRU. INSTL BOP. UNSET PKR. PSA 3597'. TIH W/BIT, DR;C & WS. TAG PBTD @ 4185'. TIH W/TP, PKR & n 2 7/8" TBG. PSA 3725'. TEWT CIBP @ 4190' TO 500 PSI. PMP 50 BBLs WL300 INTO EUMONT PERFS 3680-3700'.
 2. RU REV UNIT & TIH W/BIT, DC'S & TBG. TAG CMT @ 4185'. TAG PBTD @ 5065'. PU CMT RET & TIH TO 4150'. SQZ PERFS 4200-4286 & 4350-4367' W/200 SX CL C CMT.
 3. TIH W/BIT, DC'S & TBG. TAG UP CMT RET @ 4150'. TIH W/PKR TO 3725'. TEST SQZ TO 500 PSI. PU CMT RET TO 5075'. SQZ PERFS 5129-5162' W/100 SX CL C. TAG UP CMT RET @ 5075'. TIH W/PKR TO 3725'. TEST SQZ TO 500 PSI. TIH W/PERF GUN & PERF 6756-6780'.
 4. TIH W/PKR & TBG TO SURF. OPEN BYPASS & SPOT ACID TO PKR. CLOSE BYPASS & ACIDIZE PERFS W/2500 GAL 20% NEFE HCL.
 5. FLOW OR SWAB BACK LOAD.
 6. EVALUATE DRINKARD PRODUCTIVITY. IF NON-PROD, TA ZONE W/CIBP @ 6725'. RETURN TO EUMONT.
 7. IF DRINKARD IS PRODUCTIVE, SQZ EUMONT.

23 I hereby certify that the rules and regulations of the O.I Conservation Division have been complied with and that the information given above is true and complete to the best of my knowledge and belief.

Signature

J. Denise Leake

Printed Name

J. Denise Leake

Title

Engineering Assistant

Date

11/15/1999

Telephone

397-0405

OIL CONSERVATION DIVISION

ORIGINAL SIGNED BY CHRIS WILLIAMS
Approved By: DISTRICT I SUPERVISOR

Title:

Approval Date:

Expiration Date: NOV 19 1999

Conditions of Approval:

Attached ☐

Permit Expires 1 Year From Approval

Date Unless Being Underway

Plugback

DISTRICT I

P.O. Box 1980, Hobbs, NM 88241-1980

DISTRICT II

P.O. Box Drawer DD, Artesia, NM 88211-0719

DISTRICT III

1000 Rio Brazos Rd., Aztec, NM 87410

DISTRICT IV

P.O. Box 2088, Santa Fe, NM 87504-2088

State of New Mexico

Energy, Minerals and Natural Resources Department

Form C-102

Revised February 10, 1994

Instructions on back

Submit to Appropriate District Office

State Lease - 4 Copies

Fee Lease - 3 Copies

☐ AMENDED REPORT

OIL CONSERVATION DIVISION

P.O. Box 2088

Santa Fe, New Mexico 87504-2088

WELL LOCATION AND ACREAGE DEDICATION PLAT

¹ API Number 30-025-30063	² Pool Code	³ Pool Name WILDCAT DRINKARD
⁴ Property Code 11002	⁵ Property Name MONSTATE	⁶ Well No. 6
⁷ OGRID Number 022351	⁸ Operator Name TEXACO EXPLORATION & PRODUCTION INC.	⁹ Elevation 3717'

¹⁰ Surface Location

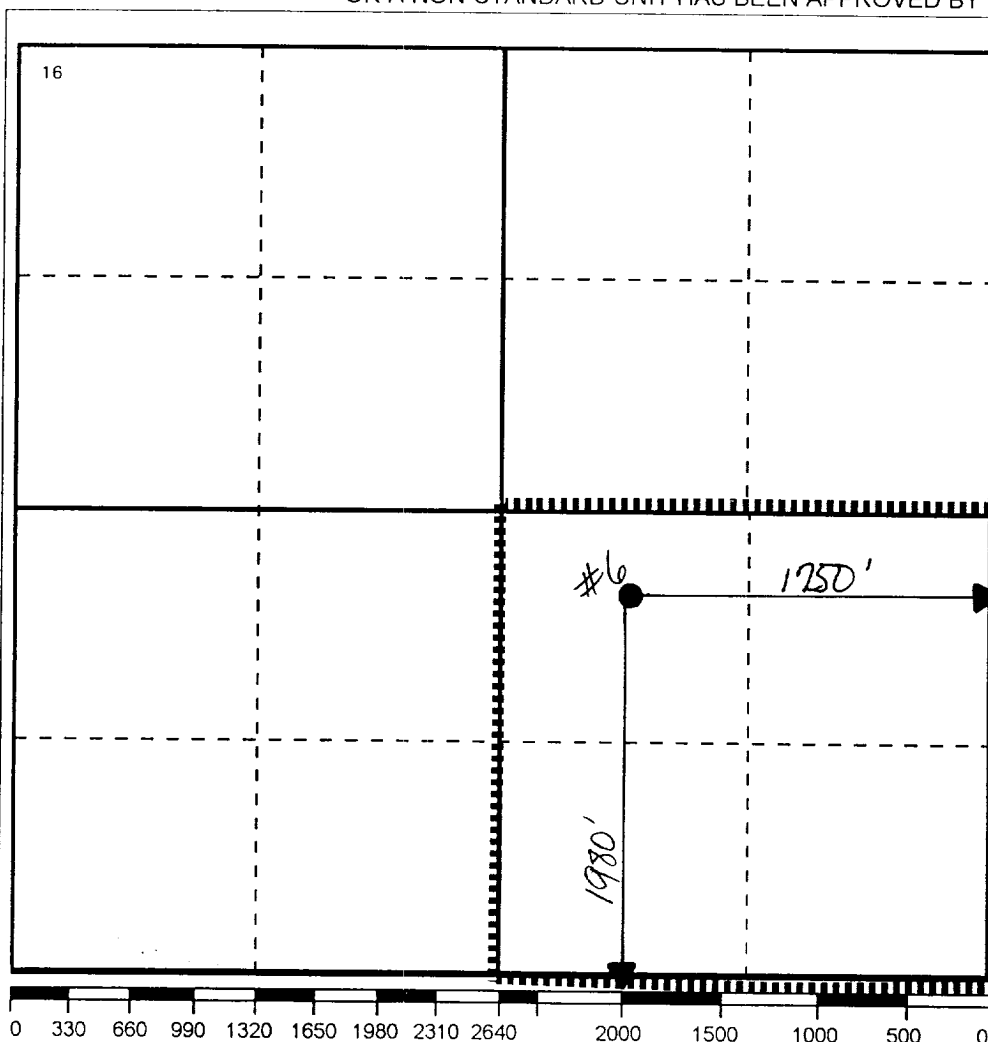
Ul or lot no.	Section	Township	Range	Lot.Idn	Feet From The	North/South Line	Feet From The	East/West Line	County
J	13	19S	36E		1980	SOUTH	1750	EAST	LEA

¹¹ Bottom Hole Location If Different From Surface

Ul or lot no.	Section	Township	Range	Lot.Idn	Feet From The	North/South Line	Feet From The	East/West Line	County

¹² Dedicated Acres 160	¹³ Joint or Infill No	¹⁴ Consolidation Code	¹⁵ Order No.
--------------------------------------	-------------------------------------	----------------------------------	-------------------------

NO ALLOWABLE WILL BE ASSIGNED TO THIS COMPLETION UNTIL ALL INTERESTS HAVE BEEN CONSOLIDATED
OR A NON-STANDARD UNIT HAS BEEN APPROVED BY THE DIVISION



17 OPERATOR CERTIFICATION

I hereby certify that the information contained herein is true and complete to the best of my knowledge and belief

Signature

J. Denise Leake

Printed Name

J. Denise Leake

Position

Engineering Assistant

Date

11/15/1999

18 SURVEYOR CERTIFICATION

I hereby certify that the well location shown on this plat was plotted from field notes of actual surveys made by me or under my supervision, and that the same is true and correct to the best of my knowledge and belief.

Date Surveyed

Signature & Seal of
Professional Surveyor

Certificate No.