

NEW MEXICO OIL CONSERVATION COMMISSION
WELL LOCATION AND ACREAGE DEDICATION PLAT

Form O-102
Supersedes O-128
Effective 1-1-85

All distances must be from the outer boundaries of the Section

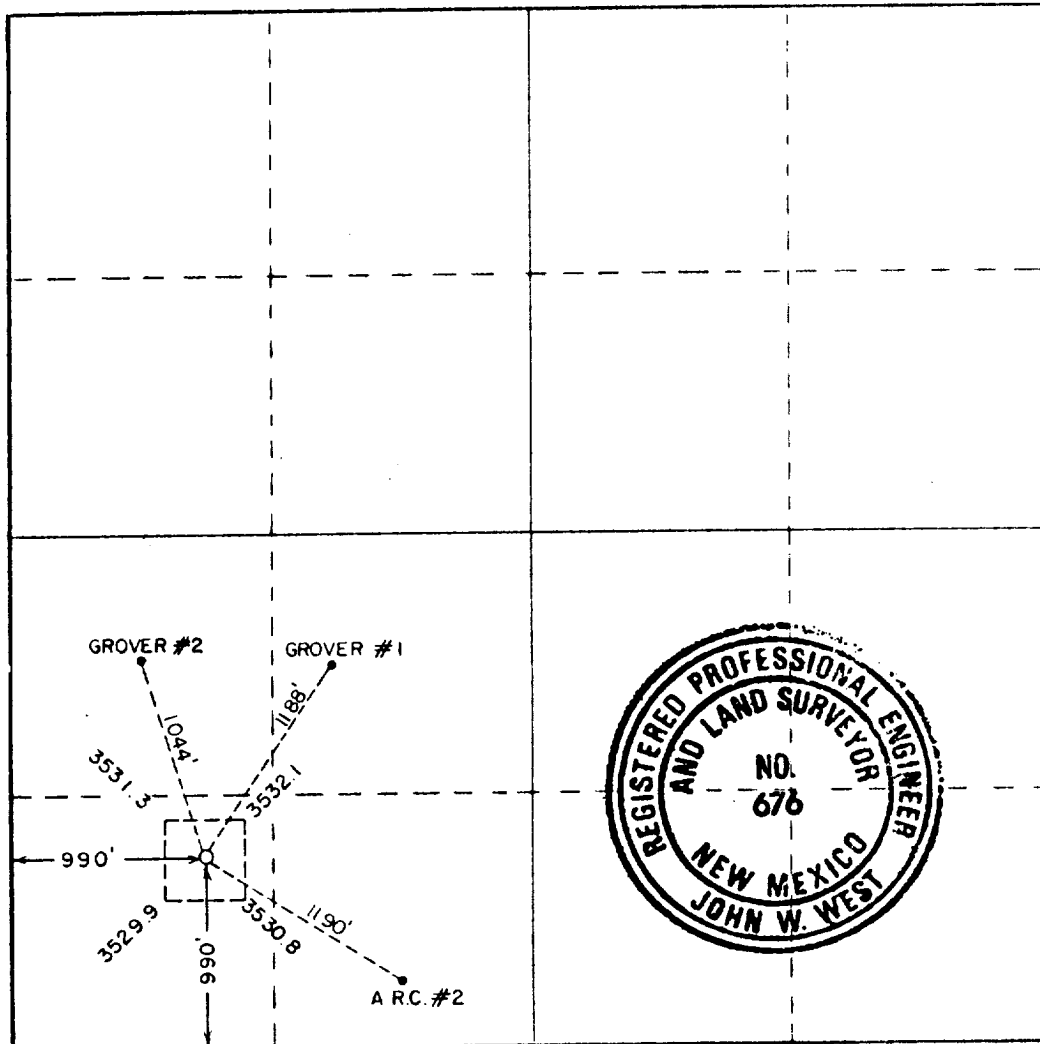
Operator Grover Oil Company			Lease Grover Federal		Well No. 4
Unit Letter M	Section 9	Township 20 South	Range 33 East	County Lea	
Actual Footage Location of Well: 990 feet from the South line and 990 feet from the West line					
Ground Level Elev. 3531.0	Producing Formation Yates-7 Rivers	Pool West Teas	Dedicated Acreage 40 Acres		

1. Outline the acreage dedicated to the subject well by colored pencil or hachure marks on the plat below.
2. If more than one lease is dedicated to the well, outline each and identify the ownership thereof (both as to working interest and royalty).
3. If more than one lease of different ownership is dedicated to the well, have the interests of all owners been consolidated by communitization, unitization, force-pooling, etc?

☐ Yes ☐ No If answer is "yes," type of consolidation _____

If answer is "no," list the owners and tract descriptions which have actually been consolidated (Use reverse side of this form if necessary.) _____

No allowable will be assigned to the well until all interests have been consolidated (by communitization, unitization, forced-pooling, or otherwise) or until a non-standard unit, eliminating such interests, has been approved by the Commission.



CERTIFICATION

I hereby certify that the information contained herein is true and complete to the best of my knowledge and belief.

John R. Byrd
Signature

Operations Supervisor

Grover-McKinney Oil Company

January 18, 1988

I hereby certify that the well location shown on this plat was plotted from field notes of actual surveys made by me or under my supervision, and that the same is true and correct to the best of my knowledge and belief.

Date Surveyed

December 31, 1987

Registered Professional Engineer and Land Surveyor

John W. West
Signature

Certificate No. JOHN W. WEST, 676

RONALD J. EIDSON, State