

NEW MEXICO OIL CONSERVATION COMMISSION
WELL LOCATION AND ACREAGE DEDICATION PLAT

Form C-102
Supersedes C-128
Effective 1-1-65

All distances must be from the outer boundaries of the Section.

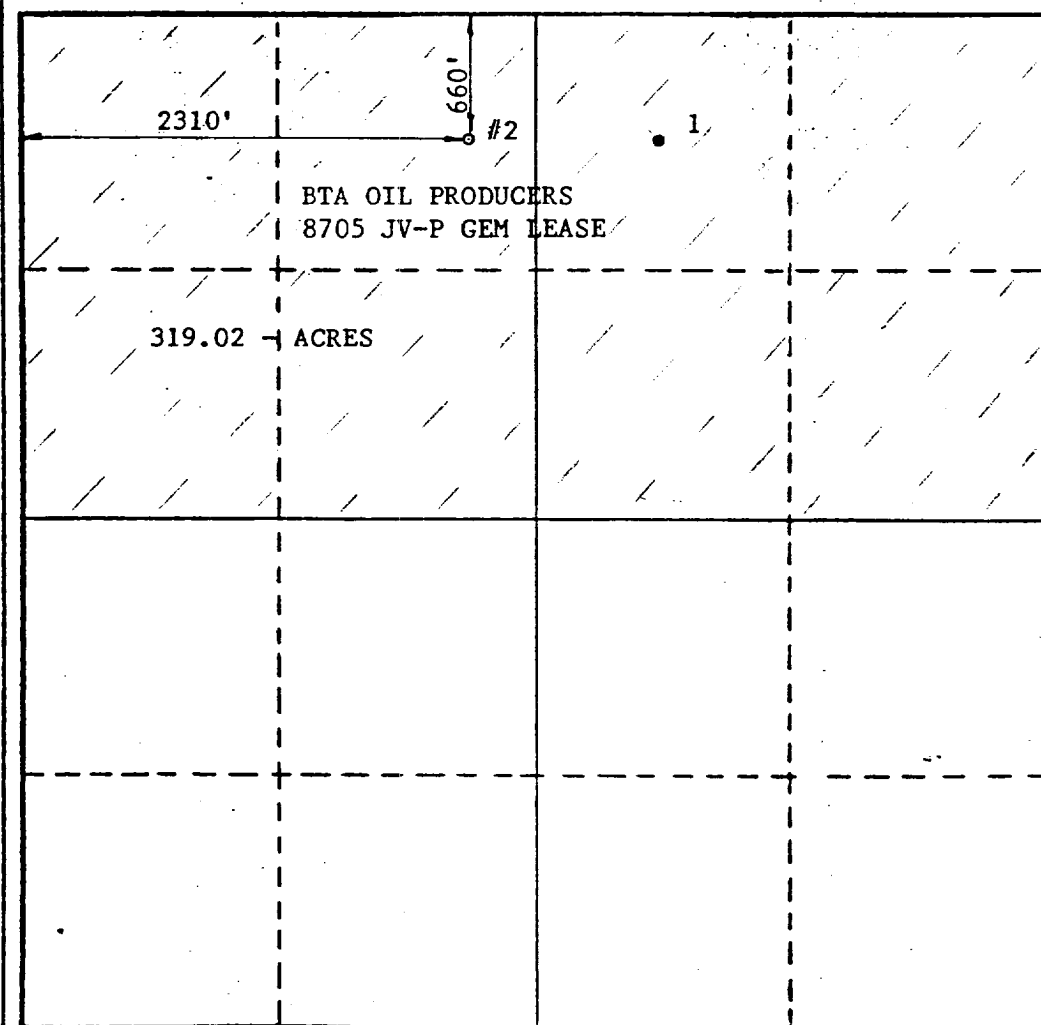
| | | | | |
|---|--------------------------------------|-----------------------------------|---|----------------------|
| Operator BTA OIL PRODUCERS | | Lease 8705 JV-P GEM | | Well No. 2 |
| Unit Letter "C" | Section 2 | Township 20-S | Range 33-E | County LEA |
| Actual Footage Location of Well: 660 feet from the NORTH line and 2310 feet from the WEST line | | | | |
| Ground Level Elev. 3589 | Producing Formation MORROW | Pool GEM (MORROW), EAST | Dedicated Acreage: 319.02 Acres | |

1. Outline the acreage dedicated to the subject well by colored pencil or hatchure marks on the plat below.
2. If more than one lease is dedicated to the well, outline each and identify the ownership thereof (both as to working interest and royalty).
3. If more than one lease of different ownership is dedicated to the well, have the interests of all owners been consolidated by communitization, unitization, force-pooling, etc?

☐ Yes ☐ No If answer is "yes," type of consolidation _____

If answer is "no," list the owners and tract descriptions which have actually been consolidated. (Use reverse side of this form if necessary.) _____

No allowable will be assigned to the well until all interests have been consolidated (by communitization, unitization, forced-pooling, or otherwise) or until a non-standard unit, eliminating such interests, has been approved by the Commission.



CERTIFICATION

I hereby certify that the information contained herein is true and complete to the best of my knowledge and belief.

Dorothy Moughton
Name

DOROTHY MOUGHTON

Position

Regulatory Administrator

Company

BTA OIL PRODUCERS

Date

September 15, 1988

I hereby certify that the well location shown on this plat was plotted from field notes of actual surveys made by me or under my supervision, and that the same is true and correct to the best of my knowledge and belief.

Date Surveyed

SEPTEMBER 14 1988

Registered Professional Engineer and/or Land Surveyor

Max A. Schumann, Jr.
MAX A. SCHUMANN, JR.

Certificate No.

1510

RECEIVED

SEP 16 1998

U.S.
HOBBS COURT