

All distances must be from the outer boundaries of the Section.

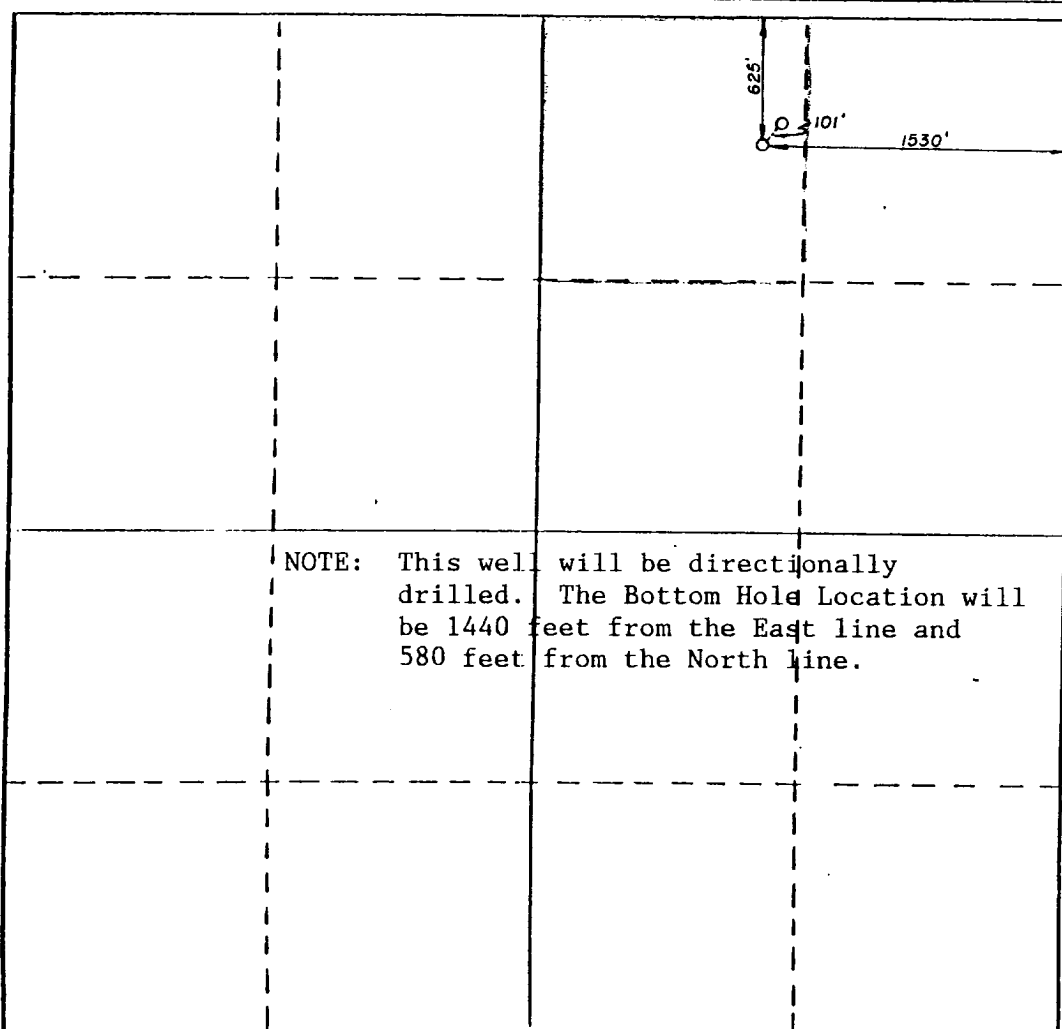
Operator Amoco Production Company			Lease South Hobbs Grayburg San Andres Unit		Well No. 224
Unit Letter B	Section 4	Township 19 South	Range 38 East	County Lea	
Actual Footage Location of Well:					
1530 feet from the East line and		625 feet from the North line			
Ground Level Elev. 3620.3 feet	Producing Formation Grayburg San Andres	Pool Hobbs Grayburg / SA	Dedicated Acreage: 40 39.92 Acres		

1. Outline the acreage dedicated to the subject well by colored pencil or hatchure marks on the plat below.
2. If more than one lease is dedicated to the well, outline each and identify the ownership thereof (both as to working interest and royalty).
3. If more than one lease of different ownership is dedicated to the well, have the interests of all owners been consolidated by communitization, unitization, force-pooling, etc?

☐ Yes ☐ No If answer is "yes," type of consolidation _____

If answer is "no," list the owners and tract descriptions which have actually been consolidated. (Use reverse side of this form if necessary.) _____

No allowable will be assigned to the well until all interests have been consolidated (by communitization, unitization, forced-pooling, or otherwise) or until a non-standard unit, eliminating such interests, has been approved by the Division.



CERTIFICATION

I hereby certify that the information contained herein is true and complete to the best of my knowledge and belief.

Name H. J. Blain
Position SR. Admin. Analyst
Company Amoco Production
Date 9.27-88

I hereby certify that the well location shown on this plat was plotted from field notes of actual surveys made by me or under my supervision, and that the same is true and correct to the best of my knowledge and belief.

September 27, 1988

Date Surveyed 9/27/88
Registered Land Surveyor Jeffrey L. Fansler
NMLS No. 10034

Certificate No. _____

0 330 660 990 1320 1650 1980 2310 2640 2970 3300 3630 3960 4290 4620 4950 5280 5610 5940 6270 6600

6880-6 171

RECEIVED
JUL 13 1968
DOD
JANUS OFFICE