

Form C-102
Revised 1-1-89

State of New Mexico
Geology, Minerals and Natural Resources Department

Form C-102
Revised 1-1-89

OIL CONSERVATION DIVISION

P.O. Box 2088
Santa Fe, New Mexico 87504-2088

DISTRICT I
P.O. Box 1980, Hobbs, NM 88240

DISTRICT II
P.O. Drawer DD, Artesia, NM 88210

DISTRICT III
1000 Rio Brazos Rd., Aztec, NM 87410

WELL LOCATION AND ACREAGE DEDICATION PLAT

All Distances must be from the outer boundaries of the section

Operator SENAB, INC.		Lease State Land Section 9		Well No. 2
Unit Letter N	Section 9	Township 19 South	Range 38 East NMPM	County Lea

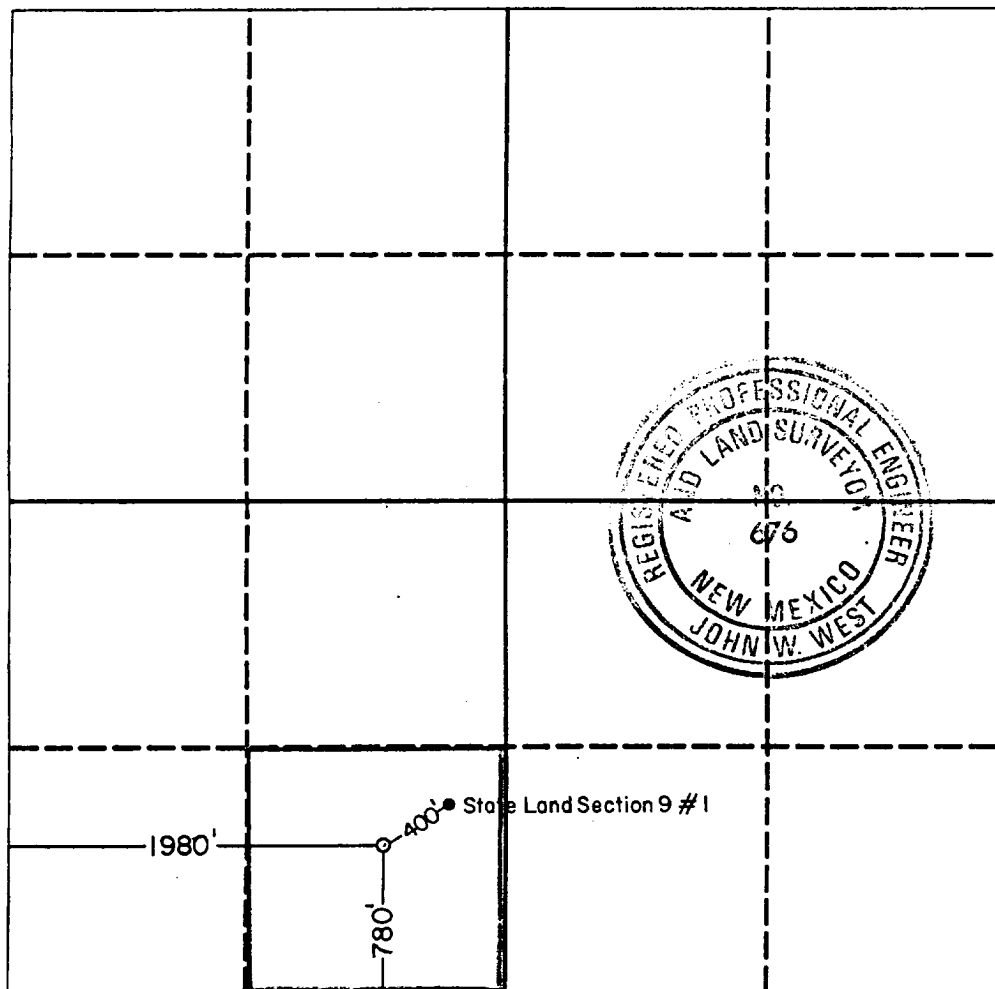
Actual Footage Location of Well:
780 feet from the South line and 1980 feet from the West line

Ground level Elev. 3598.9	Producing Formation Grayburg San Andres	Pool HOBBS - 9B/8A	Dedicated Acreage: 40 Acres
------------------------------	--	-----------------------	--------------------------------

- Outline the acreage dedicated to the subject well by colored pencil or hatchure marks on the plat below.
- If more than one lease is dedicated to the well, outline each and identify the ownership thereof (both as to working interest and royalty).
- If more than one lease of different ownership is dedicated to the well, have the interest of all owners been consolidated by communitization, unitization, force-pooling, etc.?
☐ Yes ☐ No If answer is "yes" type of consolidation _____

If answer is "no" list the owners and tract descriptions which have actually been consolidated. (Use reverse side of this form if necessary.)

No allowable will be assigned to the well until all interests have been consolidated (by communitization, unitization, forced-pooling, or otherwise) or until a non-standard unit, eliminating such interest, has been approved by the Division.



OPERATOR CERTIFICATION

I hereby certify that the information contained herein is true and complete to the best of my knowledge and belief.

Signature
ART BARNES JR

Printed Name
PRES

Position
SENAB, INC.

Company
August 13, 1990

Date

SURVEYOR CERTIFICATION

I hereby certify that the well location shown on this plat was plotted from field notes of actual surveys made by me or under my supervision, and that the same is true and correct to the best of my knowledge and belief.

Date Surveyed
June 18, 1990

Signature & Seal of
Professional Surveyor

Signature
John W. West

Certificate No. JOHN W. WEST, 676

RONALD J. EIDSON, 3239

