

Submit to Appropriate
District Office
State Lease - 6 copies
Fee Lease - 5 copies

State of New Mexico
Energy, Minerals and Natural Resources Department

Form C-101
Revised 1-1-89

OIL CONSERVATION DIVISION

DISTRICT I
P.O. Box 1980, Hobbs, NM 88240

DISTRICT II
P.O. Drawer DD, Artesia, NM 88210

DISTRICT III
1000 Rio Brazos Rd., Aztec, NM 87410

P.O. Box 2088
Santa Fe, New Mexico 87504-2088

API NO. (assigned by OCD on New Wells)

30-025-31019

5. Indicate Type of Lease

STATE ☒ FEE ☐

6. State Oil & Gas Lease No.

E-5840

APPLICATION FOR PERMIT TO DRILL, DEEPEN, OR PLUG BACK

1a. Type of Work:

DRILL ☒ RE-ENTER ☐ DEEPEN ☐ PLUG BACK ☐

b. Type of Well:

OIL WELL ☒ GAS WELL ☐ OTHER ☐ SINGLE ZONE ☐ MULTIPLE ZONE ☐

2. Name of Operator

Pyramid Energy, Inc.

7. Lease Name or Unit Agreement Name

East Pearl Queen Unit

3. Address of Operator

14100 San Pedro, Ste. 700 San Antonio, Texas 78232

8. Well No.

89

9. Pool name or Wildcat

Pearl Queen

4. Well Location

Unit Letter D : 1310 Feet From The North Line and 1310 Feet From The West Line

Section 34 Township 19S Range 35E NMPM Lea County

10. Proposed Depth

5200'

11. Formation

Queen

12. Rotary or C.T.

Rotary

13. Elevations (Show whether DF, RT, GR, etc.)

3697 GR

14. Kind & Status Plug. Bond

Surety Bond-Current

15. Drilling Contractor

Peterson

16. Approx. Date Work will start

Oct. 1990

PROPOSED CASING AND CEMENT PROGRAM

SIZE OF HOLE	SIZE OF CASING	WEIGHT PER FOOT	SETTING DEPTH	SACKS OF CEMENT	EST. TOP
12 1/4"	8 5/8"	24#	400'	250 sx	surface
7 7/8"	5 1/2"	15.50# & 17#	5000'	1000 sx	surface

IN ABOVE SPACE DESCRIBE PROPOSED PROGRAM: IF PROPOSAL IS TO DEEPEN OR PLUG BACK, GIVE DATA ON PRESENT PRODUCTIVE ZONE AND PROPOSED NEW PRODUCTIVE ZONE. GIVE BLOWOUT PREVENTER PROGRAM, IF ANY.

I hereby certify that the information above is true and complete to the best of my knowledge and belief.

SIGNATURE

Scott Graef

TITLE

Production Engineer

DATE

9/21/90

TYPE OR PRINT NAME

Scott Graef

TELEPHONE NO. (512) 490-5000

(This space for State Use)

APPROVED BY

TITLE

DATE

CONDITIONS OF APPROVAL, IF ANY:

Permit Expires 6 Months From Approval
Date Unless Drilling Underway.

NSL-2876

SEP 28 1990

N MEXICO OIL CONSERVATION COMMISS
WELL LOCATION AND ACREAGE DEDICATION PLAT

Form C-102
 Supersedes C-128
 Effective 1-1-65

All distances must be from the outer boundaries of the Section.

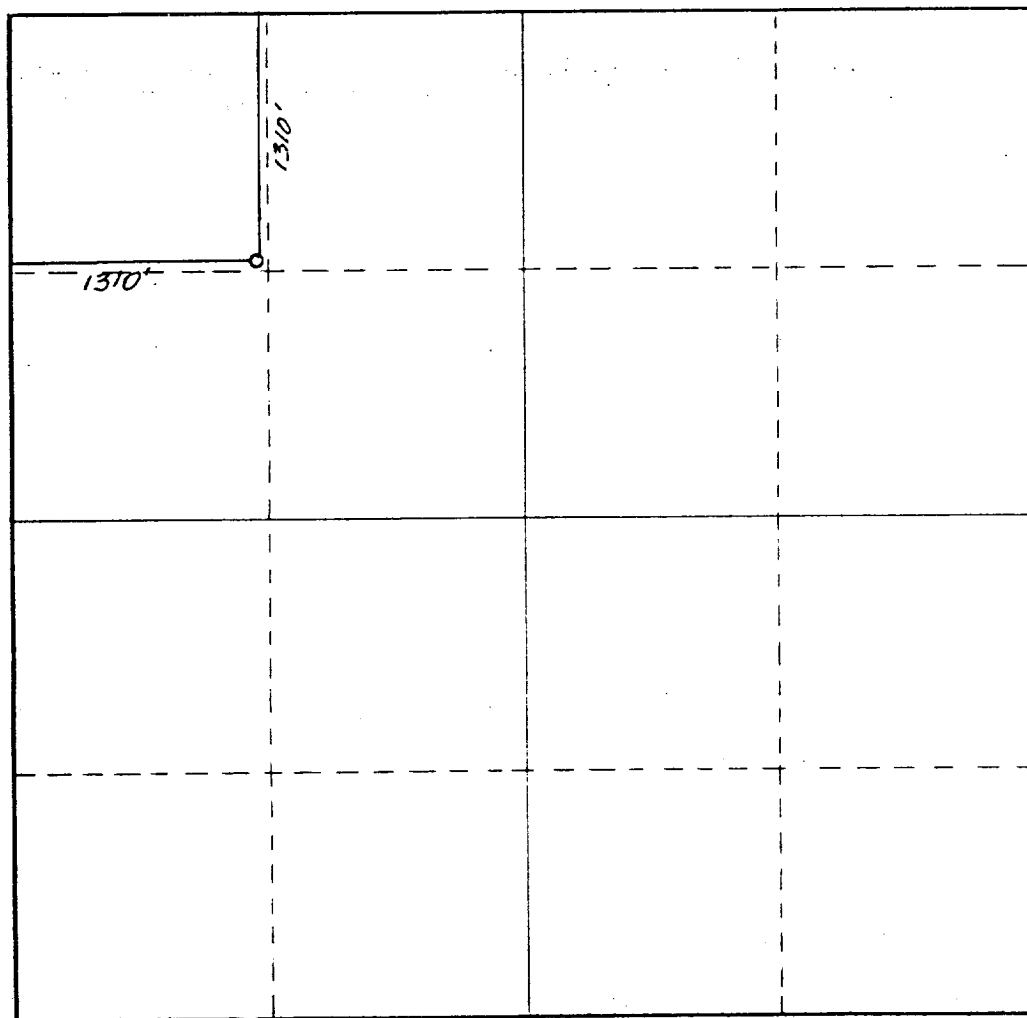
Operator PYRAMID ENERGY INC.			Lease East Pearl Queen Unit		Well No. 89
Unit Letter D	Section 34	Township 19 South	Range 35 East	County Lea County, N.M.	
Actual Footage Location of Well: 1310 feet from the North line and 1310 feet from the West line					
Ground Level Elev. 3697.	Producing Formation Queen		Pool Pearl Queen		Dedicated Acreage: 40 Acres

1. Outline the acreage dedicated to the subject well by colored pencil or hachure marks on the plat below.
2. If more than one lease is dedicated to the well, outline each and identify the ownership thereof (both as to working interest and royalty).
3. If more than one lease of different ownership is dedicated to the well, have the interests of all owners been consolidated by communitization, unitization, force-pooling, etc?

☒ Yes ☐ No If answer is "yes," type of consolidation Unitization, R-2728

If answer is "no," list the owners and tract descriptions which have actually been consolidated. (Use reverse side of this form if necessary.) _____

No allowable will be assigned to the well until all interests have been consolidated (by communitization, unitization, forced-pooling, or otherwise) or until a non-standard unit, eliminating such interests, has been approved by the Commission.



CERTIFICATION

I hereby certify that the information contained herein is true and complete to the best of my knowledge and belief.

Scott Graft

Name

Position

Production Engineer

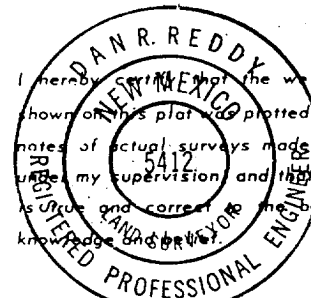
Company

Pyramid Energy, Inc.

Date

Sept. 21, 1990

I hereby certify that the well location shown on this plat was plotted from field notes of actual surveys made by me or under my supervision and that the same is true and correct to the best of my knowledge and belief.



Date Surveyed

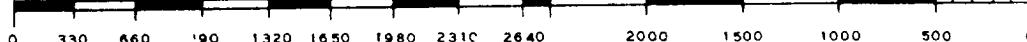
September 19, 1990

Registered Professional Engineer and/or Land Surveyor

Dan R. Reddy

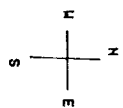
Certificate No.

NM PE&PS NO. 5412

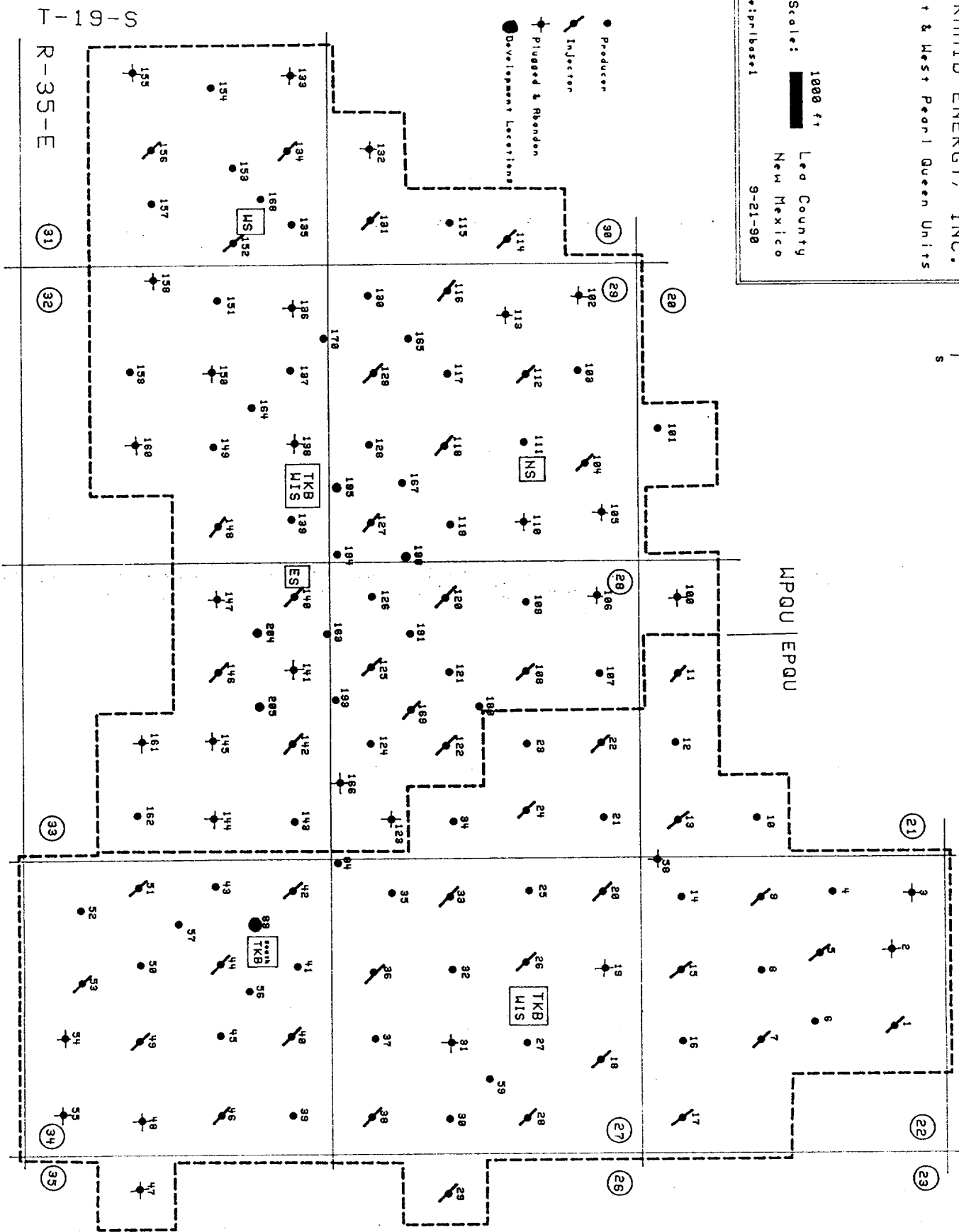


PYRAMID ENERGY, INC.
East & West Pearl Queen Units

Scale: 1000 ft
Lead County
New Mexico
9-21-90
file:prlbaset1

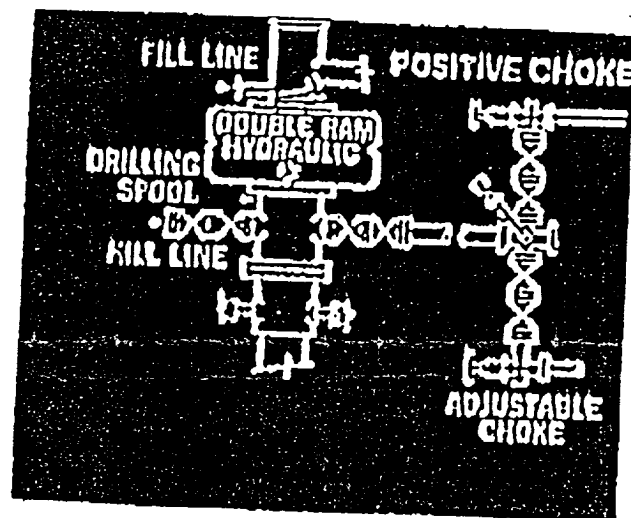


- Producer
- Injector
- Plugged & Abandoned
- Development Locations



T-19-S
R-35-E

BOP





PYRAMID ENERGY, INC.

Pacific Plaza • 14100 San Pedro, Suite 700

San Antonio, Texas 78232 • (512) 490-5000 • FAX: (512) 494-0406

September 21, 1990

Michael E. Stogner
NMOCD
P.O. Box 2088
Santa Fe, New Mexico 87504-2088

Re: Unorthodox Location
East Pearl Queen Unit #89
T19S, R35E
Lea County, New Mexico

Dear Mr. Stogner:

This letter shall serve as our request to have the following unorthodox location approved by your office.

1310' FNL 1310' FWL, Sec. 34, Unit D, T19S, R35E

On the attached plat, you will note our location lies within the unit boundaries of the East Pearl Queen Unit. We offset ourselves on these locations. We are requesting approval of this location because it will allow us to establish a more efficient waterflood pattern within the unit.

Should you have any questions, please call.

Sincerely,

Scott Graef
Production Engineer

attachment

cc: NMOCD - Hobbs

177

RECEIVED

SEP 24 1990

CCC
HOUSE OFFICE