

Submit to Appropriate
District Office
State Lease - 6 copies
Fee Lease - 5 copies

State of New Mexico
Energy, Minerals and Natural Resources Department

Form C-101
Revised 1-1-89

OIL CONSERVATION DIVISION

P.O. Box 2088
Santa Fe, New Mexico 87504-2088

DISTRICT I
P.O. Box 1980, Hobbs, NM 88240

DISTRICT II
P.O. Drawer DD, Artesia, NM 88210

DISTRICT III
1000 Rio Brazos Rd., Aztec, NM 87410

API NO. (assigned by OCD on New Wells)

30-025-31023

5. Indicate Type of Lease

STATE ☒ FEE ☐

6. State Oil & Gas Lease No.
E-5841

APPLICATION FOR PERMIT TO DRILL, DEEPEN, OR PLUG BACK

1a. Type of Work:

DRILL ☒ RE-ENTER ☐ DEEPEN ☐ PLUG BACK ☐

b. Type of Well:

OIL WELL ☒ GAS WELL ☐ OTHER ☐ SINGLE ZONE ☐ MULTIPLE ZONE ☐

2. Name of Operator

Pyramid Energy, Inc.

8. Well No.
205

3. Address of Operator

14100 San Pedro, Ste. 700 San Antonio, Texas 78232

9. Pool name or Wildcat
Pearl Queen

4. Well Location

Unit Letter C : 1310 Feet From The North Line and 2630 Feet From The West Line

Section 33 Township 19S Range 35E NMPM Lea County

10. Proposed Depth

5200'

11. Formation

Queen

12. Rotary or C.T.

Rotary

13. Elevations (Show whether DF, RT, GR, etc.)

3707 GR

14. Kind & Status Plug. Bond

Surety Bond-Current

15. Drilling Contractor

Peterson

16. Approx. Date Work will start

Oct. 1990

17. PROPOSED CASING AND CEMENT PROGRAM

SIZE OF HOLE	SIZE OF CASING	WEIGHT PER FOOT	SETTING DEPTH	SACKS OF CEMENT	EST. TOP
12 1/4"	8 5/8"	24#	400'	250 sx	surface
7 7/8"	5 1/2"	15.50 # & 17#	5000'	1000 sx	surface

IN ABOVE SPACE DESCRIBE PROPOSED PROGRAM: IF PROPOSAL IS TO DEEPEN OR PLUG BACK, GIVE DATA ON PRESENT PRODUCTIVE ZONE AND PROPOSED NEW PRODUCTIVE ZONE. GIVE BLOWOUT PREVENTER PROGRAM, IF ANY.

I hereby certify that the information above is true and complete to the best of my knowledge and belief.

SIGNATURE

Scott Graef

TITLE

Production Engineer

DATE 9/21/90

TYPE OR PRINT NAME

Scott Graef

TELEPHONE NO. (512)490-5000

(This space for State Use)

ORIGINAL SIGNED BY JERRY SEXTON

APPROVED BY

TITLE

DATE

CONDITIONS OF APPROVAL, IF ANY:

NSL-2877

Permit Expires 6 Months From Approval
Date Unless Drilling Underway.

SEP 28 1990

NE EXICO OIL CONSERVATION COMMISSION
WELL LOCATION AND ACREAGE DEDICATION PLAT

Form C-102
Supersedes C-128
Effective 1-1-65

All distances must be from the outer boundaries of the Section.

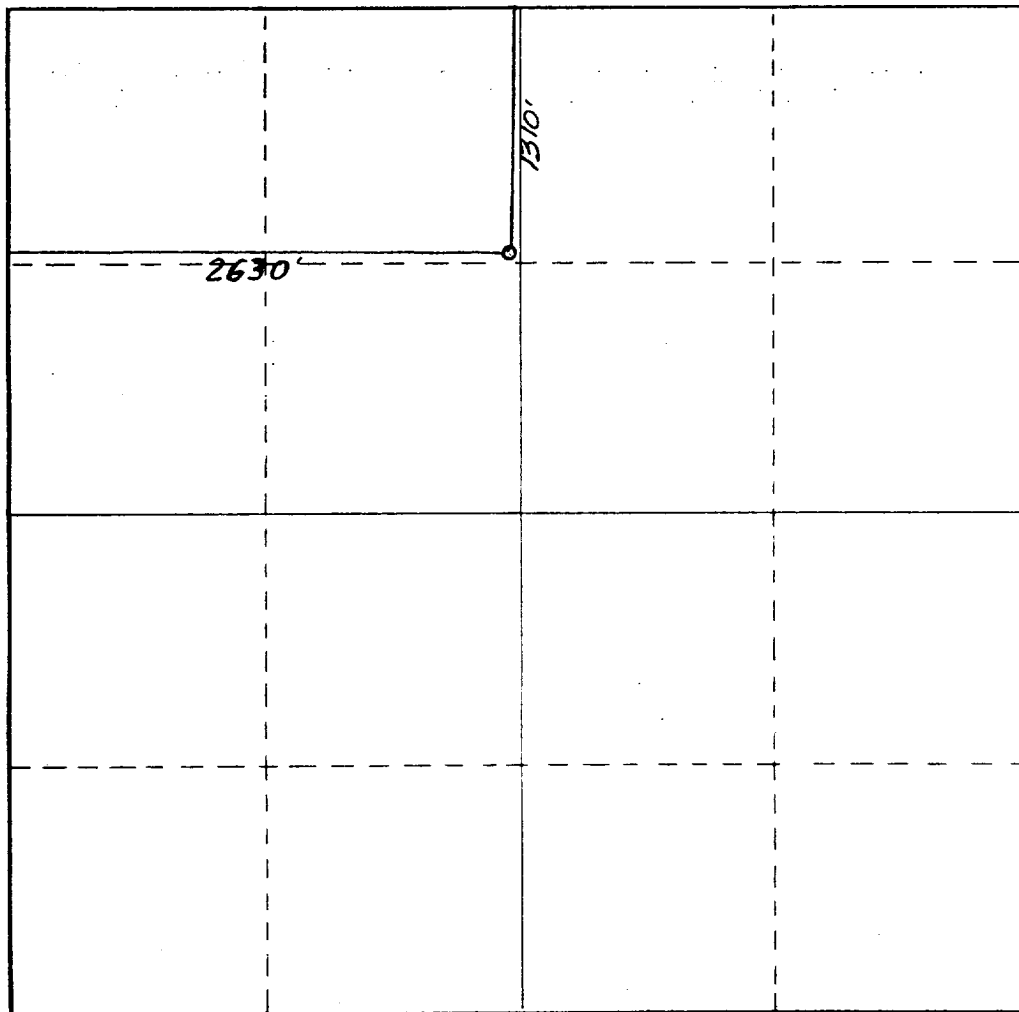
Operator PYRAMID ENERGY INC.			Lease West Pearl Queen Unit		Well No. 205
Unit Letter C	Section 33	Township 19 South	Range 35 East	County Lea County, N.M.	
Actual Footage Location of Well: 1310 feet from the North line and 2630 feet from the West line					
Ground Level Elev. 3707.	Producing Formation Queen		Pool Pearl Queen		Dedicated Acreage: 40 Acres

1. Outline the acreage dedicated to the subject well by colored pencil or hachure marks on the plat below.
2. If more than one lease is dedicated to the well, outline each and identify the ownership thereof (both as to working interest and royalty).
3. If more than one lease of different ownership is dedicated to the well, have the interests of all owners been consolidated by communitization, unitization, force-pooling, etc?

☒ Yes ☐ No If answer is "yes," type of consolidation Unitization, R-2728

If answer is "no," list the owners and tract descriptions which have actually been consolidated. (Use reverse side of this form if necessary.) _____

No allowable will be assigned to the well until all interests have been consolidated (by communitization, unitization, forced-pooling, or otherwise) or until a non-standard unit, eliminating such interests, has been approved by the Commission.



CERTIFICATION

I hereby certify that the information contained herein is true and complete to the best of my knowledge and belief.

Name

Position

Production Engineer

Company

Pyramid Energy, Inc.

Date

Sept. 21, 1990

I hereby certify that the well location shown on this plat was plotted from field notes of actual surveys made by me or under my supervision, and that the same is true and correct to the best of my knowledge and belief.

Date Surveyed

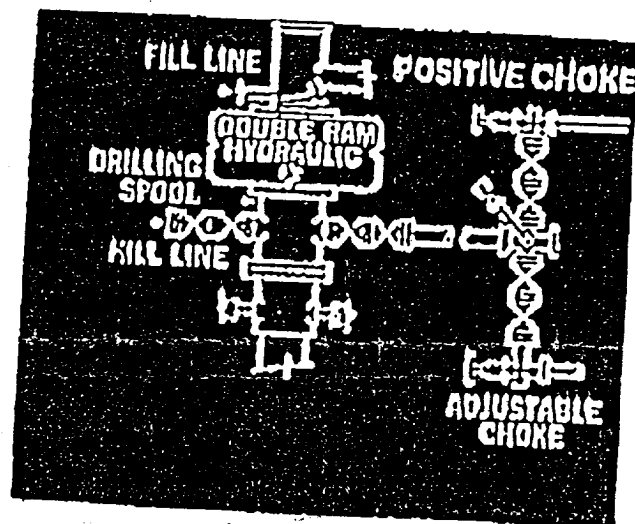
September 19, 1990

Registered Professional Engineer and/or Land Surveyor

Certificate No.

NM PE&PS NO. 5412

BOP



100-12/18/90
513

SEP 24 1990
HOUSE OFFICE