

Submit to Appropriate
District Office
State Lease - 6 copies
Fee Lease - 5 copies

State of New Mexico
Energy, Minerals and Natural Resources Department

Form C-101
Revised 1-1-89

OIL CONSERVATION DIVISION

DISTRICT I
P.O. Box 1980, Hobbs, NM 88240

DISTRICT II
P.O. Drawer DD, Artesia, NM 88210

DISTRICT III
1000 Rio Brazos Rd., Aztec, NM 87410

P.O. Box 2088
Santa Fe, New Mexico 87504-2088

API NO. (assigned by OCD on New Wells)

~~370~~ 30-025-31106

5. Indicate Type of Lease

STATE ☐

FEE ☒

6. State Oil & Gas Lease No.

APPLICATION FOR PERMIT TO DRILL, DEEPEN, OR PLUG BACK

1a. Type of Work:

DRILL ☒

RE-ENTER ☐

DEEPEN ☐

PLUG BACK ☐

b. Type of Well:

OIL

GAS

WELL ☒

WELL ☐

OTHER ☐

SINGLE
ZONE ☐

MULTIPLE
ZONE ☐

2. Name of Operator

Pyramid Energy, Inc.

7. Lease Name or Unit Agreement Name

East Pearl Queen Unit

3. Address of Operator

14100 San Pedro Ste. 700 San Antonio, Texas 78232

8. Well No.

#77

9. Pool name or Wildcat

Pearl Queen

4. Well Location

Unit Letter I

: 2563

Feet From The

South

Line and

40

Feet From The

East

Line

Section 28

Township

19S

Range

35E

NMPM

Lea

County

10. Proposed Depth

5200'

11. Formation

Queen

12. Rotary or C.T.

Rotary

13. Elevations (Show whether DF, RT, GR, etc.)

3719'

14. Kind & Status Plug. Bond

Surety Bond-Current

15. Drilling Contractor

Peterson

16. Approx. Date Work will start

12/20/90

17. PROPOSED CASING AND CEMENT PROGRAM

SIZE OF HOLE	SIZE OF CASING	WEIGHT PER FOOT	SETTING DEPTH	SACKS OF CEMENT	EST. TOP
12 1/4"	8 5/8"	24#	400'	250 sx	Surface
7 7/8"	5 1/2"	15.50# & 17#	5000'	1000 sx	Surface

IN ABOVE SPACE DESCRIBE PROPOSED PROGRAM: IF PROPOSAL IS TO DEEPEN OR PLUG BACK, GIVE DATA ON PRESENT PRODUCTIVE ZONE AND PROPOSED NEW PRODUCTIVE ZONE. GIVE BLOWOUT PREVENTER PROGRAM, IF ANY.

I hereby certify that the information above is true and complete to the best of my knowledge and belief.

SIGNATURE

Debra Hofstetter

TITLE

Production

DATE

12/11/90

TYPE OR PRINT NAME

Debra Hofstetter

TELEPHONE NO. (512)490-5000

(This space for State Use)

APPROVED BY

TITLE

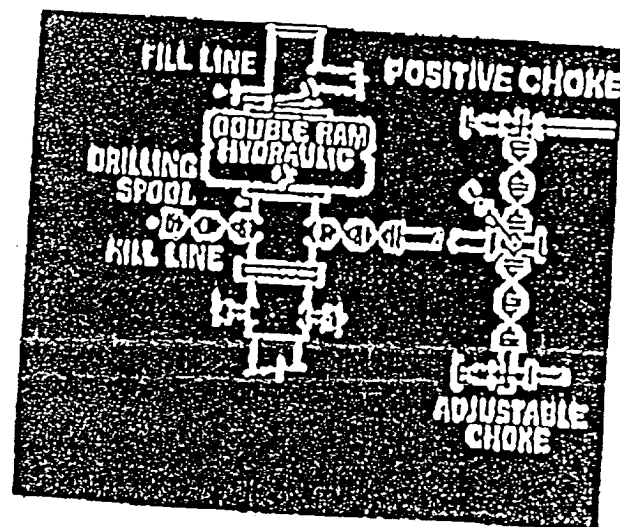
DATE

DEC 17 1990

CONDITIONS OF APPROVAL, IF ANY:

Approved for drilling only--well cannot be produced until unorthodox location has been approved.

BOP



**NEW MEXICO OIL CONSERVATION COMMISSION
WELL LOCATION AND ACREAGE DEDICATION PLAT**

Form C-102
Supersedes C-128
Effective 1-1-65

All distances must be from the outer boundaries of the Section.

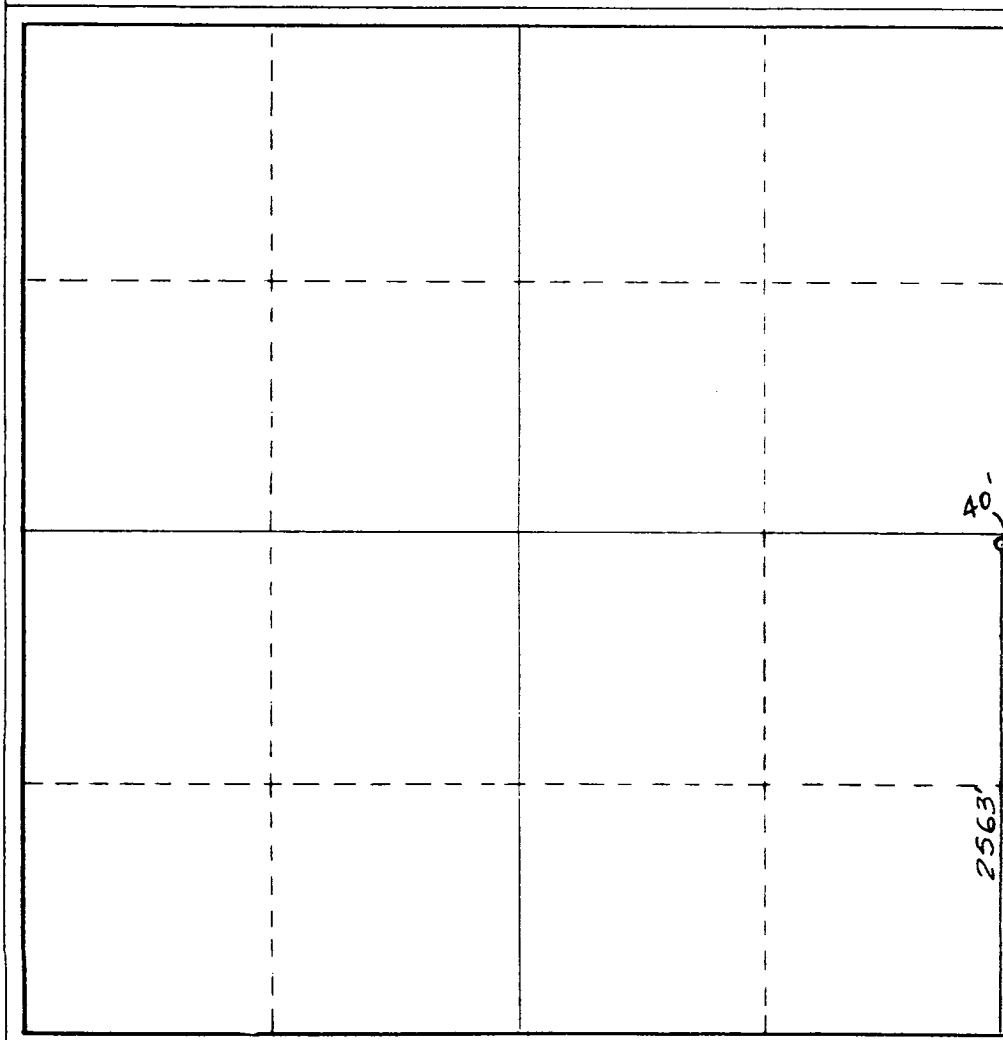
Operator PYRAMID ENERGY INC.			Lease East Pearl Queen Unit		Well No. 77
Unit Letter I	Section 28	Township 19 South	Range 35 East	County Lea County, N.M.	
Actual Footage Location of Well: 2563 feet from the South line and 40 feet from the East line					
Ground Level Elev. 3719.	Producing Formation Queen		Pool Pearl Queen	Dedicated Acreage: 40 Acres	

1. Outline the acreage dedicated to the subject well by colored pencil or hachure marks on the plat below.
2. If more than one lease is dedicated to the well, outline each and identify the ownership thereof (both as to working interest and royalty).
3. If more than one lease of different ownership is dedicated to the well, have the interests of all owners been consolidated by communitization, unitization, force-pooling, etc?

☒ Yes ☐ No If answer is "yes," type of consolidation Unitization, R-2537

If answer is "no," list the owners and tract descriptions which have actually been consolidated. (Use reverse side of this form if necessary.) _____

No allowable will be assigned to the well until all interests have been consolidated (by communitization, unitization, forced-pooling, or otherwise) or until a non-standard unit, eliminating such interests, has been approved by the Commission.



CERTIFICATION

I hereby certify that the information contained herein is true and complete to the best of my knowledge and belief.

Name *Scott Graft*
Position
Production Engineer
Company
Pyramid Energy, Inc.

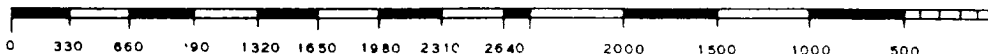
Date
12/17/90

I hereby certify that the well location shown on this plat was plotted from field notes of actual surveys made by me or under my supervision, and that the same is true and correct to the best of my knowledge and belief.

Date Surveyed
December 7, 1990
Registered Professional Engineer
and/or Land Surveyor

Jim R. Reddy
Certificate No.

NM PE&PS NO. 5412



16-97-4 8221
FILE

DEC 18 1990
FBI
HONOLULU OFFICE