

DISTRICT I
P. O. Box 1980
Hobbs, NM 88240

DISTRICT II
P. O. Drawer DD
Artesia, NM 88210

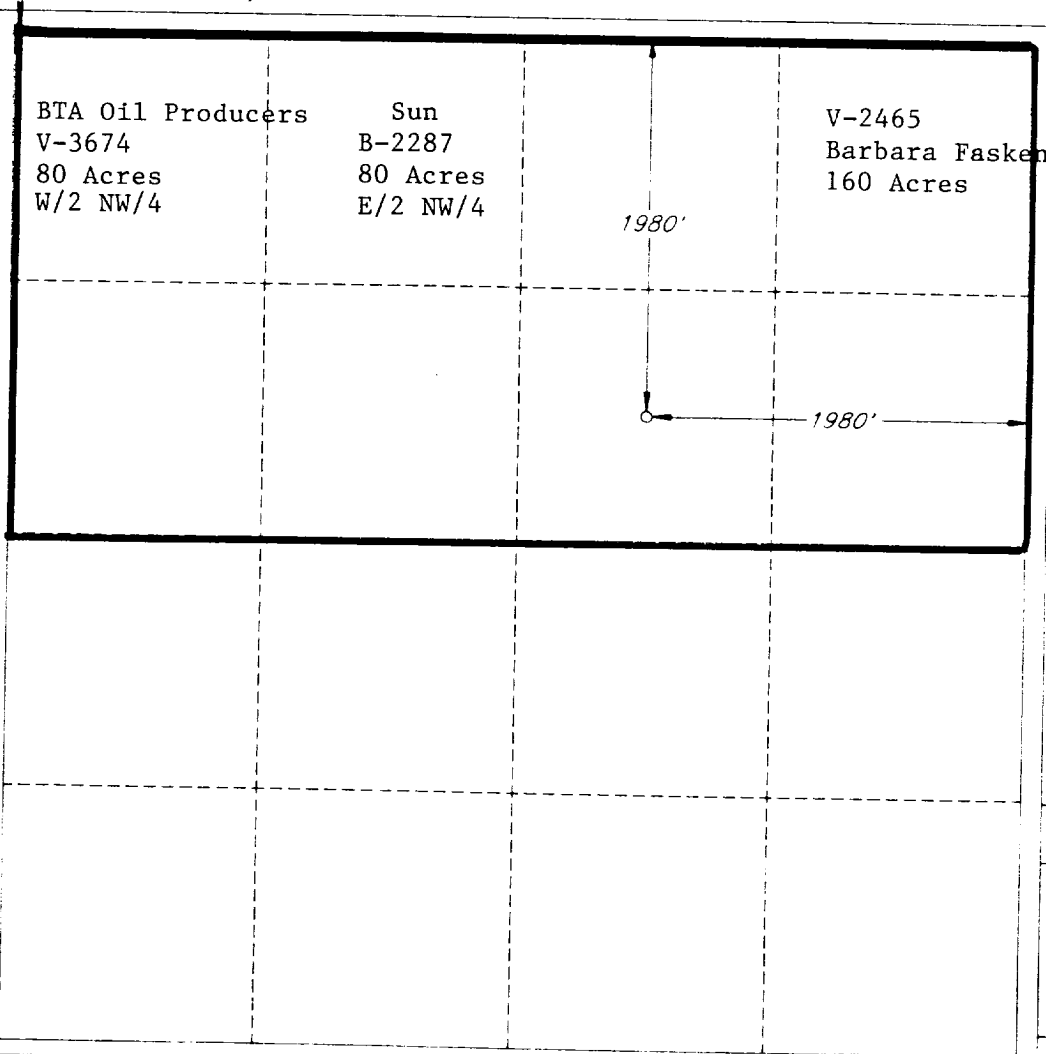
DISTRICT III
1000 Rio Brazos Rd
Aztec, NM 87410

OIL CONSERVATION DIVISION
P. O. Box 2088
Santa Fe, New Mexico 87504-2088

WELL LOCATION AND ACREAGE DEDICATION PLAT
All distances must be from the outer boundaries of the section

| | | | | | | | | |
|--------------------------------------|---------------|----------------------|-------------------------------|----------------|--|-------------------------------------|--|--|
| Operator BTA OIL PRODUCERS | | | Lease Aline, 9012 JV-P | | | Well No. 1 | | |
| Unit Letter G | Section 36 | Township 20-SOUTH | Range 34-EAST | County NMPM | | LEA | | |
| Actual Footage Location of Well | | | | | | | | |
| 1980 feet from the NORTH line and | | | 1980 feet from the EAST line | | | | | |
| Ground Level Elev. 3746' | | | Producing Formation Morrow | | | Pool Berry, North <i>Wildcat</i> | | |
| | | | | | | 320 Acres | | |

- Outline the acreage dedicated to the subject well by colored pencil or hatchure marks on the plat below.
- If more than one lease is dedicated to the well, outline each and identify the ownership thereof (both as to working interest and royalty).
- If more than one lease of different ownership is dedicated to the well, have the interest of all the owners been consolidated by communitization, unitization, forced-pooling, etc?
☐ Yes ☒ No If answer is "yes", type of consolidation Application for communitization
If the answer is "no", list the owners and tract descriptions which have actually been consolidated. (Use the reverse side of this form if necessary.)
No allowable will be assigned to the well until all interests have been consolidated (by communitization, unitization, forced-pooling, or otherwise) or until a non-standard unit, eliminating such interest, has been approved by the division.



OPERATOR CERTIFICATION

I hereby certify that the information herein is true and complete to the best of my knowledge and belief.

Signature
Dorothy Houghton
Printed Name
Dorothy Houghton

Position
Regulatory Administrator
Company
BTA Oil Producers

Date
2-25-91

SURVEYOR CERTIFICATION

I hereby certify that the well location shown on this plat was plotted from field notes of actual surveys made by me or under my supervision, and that the same is true and correct to the best of my knowledge and belief.

Date Surveyed
FEBRUARY 20, 1991
Signature and Seal of Professional Surveyor
BEZNER
NO. 7920
REGISTERED LAND SURVEYOR

Certificate No.
7920