

UNITED STATES  
DEPARTMENT OF THE INTERIOR  
BUREAU OF LAND MANAGEMENT

APPLICATION FOR PERMIT TO DRILL, DEEPEN, OR PLUG BACK

1a. TYPE OF WORK DRILL <input checked="" type="checkbox"/> DEEPEN <input type="checkbox"/> PLUG BACK <input type="checkbox"/>				5. LEASE DESIGNATION AND SERIAL NO. NM 62602-8652	
b. TYPE OF WELL OIL WELL <input checked="" type="checkbox"/> GAS WELL <input type="checkbox"/> OTHER <input type="checkbox"/> SINGLE ZONE <input checked="" type="checkbox"/> MULTIPLE ZONE <input type="checkbox"/>				6. IF INDIAN, ALLOTTEE OR TRIBE NAME	
2. NAME OF OPERATOR Marathon Oil Company				7. UNIT AGREEMENT NAME Voluntary	
3. ADDRESS OF OPERATOR P O Box 552, Midland, TX 79702				8. FARM OR LEASE NAME Hamon Federal	
4. LOCATION OF WELL (Report location clearly and in accordance with any State requirements.)* At surface 1980' FNL & 660' FEL At proposed prod. zone 1980' FNL & 660' FEL				9. WELL NO. 2	
14. DISTANCE IN MILES AND DIRECTION FROM NEAREST TOWN OR POST OFFICE* 30 miles west of Hobbs, New Mexico				10. FIELD AND POOL, OR WILDCAT Wildcat (Bone Spring)	
15. DISTANCE FROM PROPOSED* LOCATION TO NEAREST PROPERTY OR LEASE LINE, FT. (Also to nearest drlg. unit line, if any) 660'		16. NO. OF ACRES IN LEASE		17. NO. OF ACRES ASSIGNED TO THIS WELL 40	
18. DISTANCE FROM PROPOSED LOCATION* TO NEAREST WELL, DRILLING, COMPLETED, OR APPLIED FOR, ON THIS LEASE, FT. *1866'		19. PROPOSED DEPTH 9650'		20. ROTARY OR CABLE TOOLS Rotary	
21. ELEVATIONS (Show whether DF, RT, GR, etc.) 3613.5' GR				22. APPROX. DATE WORK WILL START* June 1, 1991	
23. PROPOSED CASING AND CEMENTING PROGRAM					
Bill-P Potash Secretary's Potash					
SIZE OF HOLE	SIZE OF CASING	WEIGHT PER FOOT	SETTING DEPTH	QUANTITY OF CEMENT	
17-1/2"	13-3/8"	54	450'	360 sx - circulate	
11"	8-5/8"	32	5300'	2500 sx - circulate	
7-7/8"	5-1/2"	15.5 & 17	9650'	740 sx - SE Slips.	

Propose to drill to a TD of 9650'.

All casing will be run and cemented in accordance with regulations and by approved methods.

Blowout prevention equipment will be applied as outlined in Additional Information. See attached Multipoint Surface Use Plan and Additional Information for specific drilling operations.

\* Distance to Hamon Fed Com #1

APPROVAL SUBJECT TO  
GENERAL REQUIREMENTS AND  
SPECIAL STIPULATIONS  
ATTACHED

IN ABOVE SPACE DESCRIBE PROPOSED PROGRAM: If proposal is to deepen or plug back, give data on present productive zone and proposed new productive zone. If proposal is to drill or deepen directionally, give pertinent data on subsurface locations and measured and true vertical depths. Give blowout preventer program, if any.

24. SIGNED [Signature] TITLE Drilling Superintendent DATE 5/8/91

(This space for Federal or State office use)

PERMIT NO. \_\_\_\_\_ APPROVAL DATE \_\_\_\_\_

APPROVED BY Orig Signed by Richard L. Manus TITLE AREA MANAGER DATE 9-16-91  
CONDITIONS OF APPROVAL, IF ANY: \_\_\_\_\_

\*See Instructions On Reverse Side

REC'D 400

SEP 17 1991

0-00  
HOLDS OFFICE

## OIL CONSERVATION DIVISION

**P.O. Box 2088**

**Santa Fe, New Mexico 87504-2088**

**DISTRICT I**  
P.O. Box 1980, Hobbs, NM 88240

**DISTRICT II**  
**P.O. Drawer DD, Artesia, NM 88210**

**DISTRICT III**  
1000 Rio Brazos Rd., Aztec, NM 87410

## WELL LOCATION AND ACREAGE DEDICATION PLAT

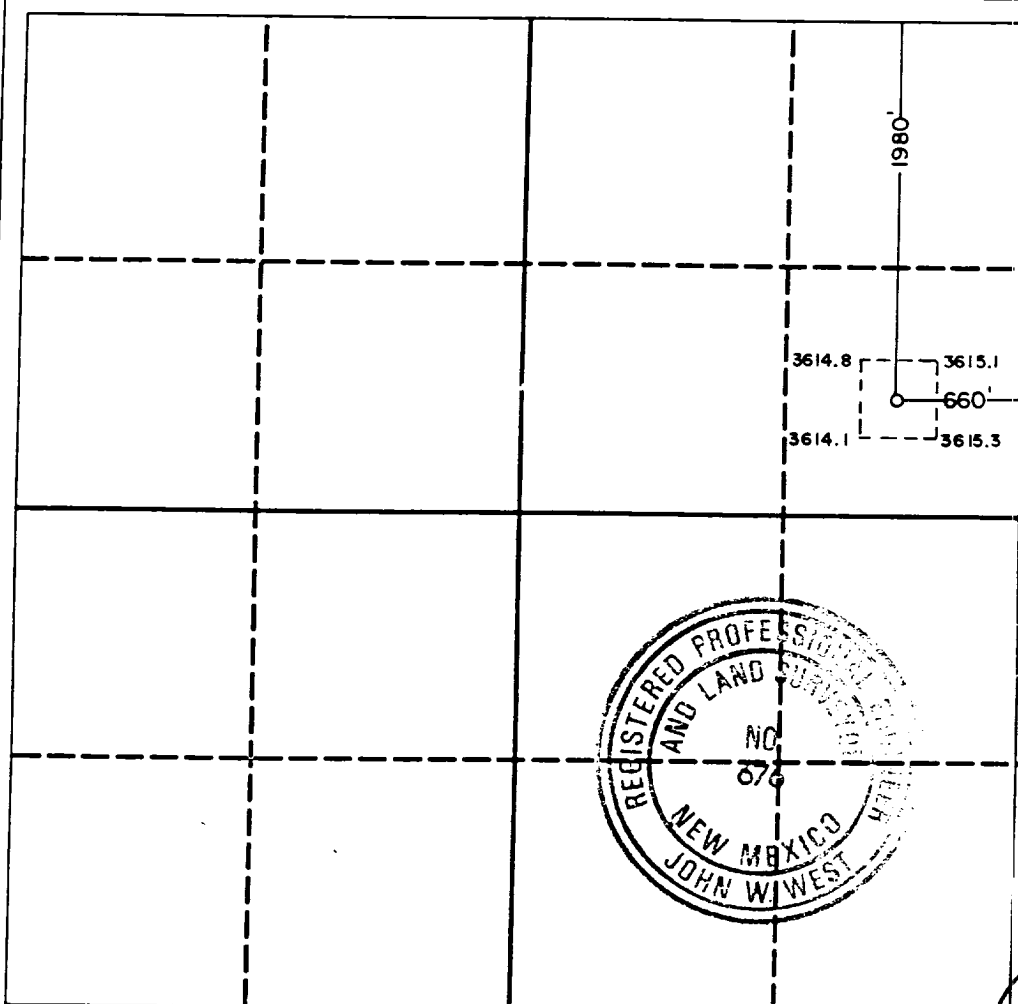
**All Distances must be from the outer boundaries of the section**

Operator MARATHON OIL COMPANY			Lease HAMON FEDERAL		Well No. 2
Unit Letter H	Section 7	Township 20 SOUTH	Range 34 EAST	County LEA	
Actual Footage Location of Well: 1980 feet from the NORTH line and 660 feet from the EAST line					
Ground level Elev. 3613.5	Producing Formation Bone Spring	Pool Wildcat			Dedicated Acreage: 40 Acres

1. Outline the acreage dedicated to the subject well by colored pencil or hatchure marks on the plat below.
2. If more than one lease is dedicated to the well, outline each and identify the ownership thereof (both as to working interest and royalty).
3. If more than one lease of different ownership is dedicated to the well, have the interest of all owners been consolidated by communitization, unitization, force-pooling, etc.?

☐ Yes ☐ No If answer is "yes" type of consolidation \_\_\_\_\_  
If answer is "no" list the owners and tract descriptions which have actually been consolidated. (Use reverse side of this form if necessary.)

No allowable will be assigned to the well until all interests have been consolidated (by communitization, unitization, forced-pooling, or otherwise) or until a non-standard unit, eliminating such interest, has been approved by the Division.



## OPERATOR CERTIFICATION

I hereby certify that the information contained herein is true and complete to the best of my knowledge and belief.

Signature \_\_\_\_\_

Printed Name

S. L. Atnipp

**Position**

Drilling Superintendent  
Company

Marathon Oil Company

Date \_\_\_\_\_

### SURVEYOR CERTIFICATION

I hereby certify that the well location shown on this plat was plotted from field notes of actual surveys made by me or under my supervision, and that the same is true and correct to the best of my knowledge and belief.

Date Surveyed \_\_\_\_\_

4-24-91

**Signature & Seal of Professional Surveyor**

Certificate No. JOHN W. WEST. 676

RONALD J. ENDSON. 3239

REC-111

SEP 17 1991

000  
HONG KONG OFFICE

MARATHON OIL COMPANY

HAMON FEDERAL #2  
ADDITIONAL INFORMATION  
Comply with Order 1

In conjunction with Form 9-331C, Application to drill subject well, Marathon Oil Company submits the following items of information in accordance with BLM requirements:

1. Geological Name of Surface Formation

Quaternary Alluvium

2. Estimated Tops of Important Geological Markers

Rustler	1213'	Delaware	5350'
Top of Salt	2450'	Bone Spring	8350'
Base of Salt	3150'	1st Sand	9410'
Yates	3450'		
T/Capitan Reef	3800'		
B/Capitan Reef	4650'		

3. Estimated Depths of Anticipated Water, Oil or Gas Bearing Formations

Yates (water)	3450'
T/Capitan Reef (water)	3800'
B/Capitan Reef (water)	4650'
Delaware (water & oil)	5350'
Bone Spring (water & oil)	8350'
1st Sand (water & oil)	9410'

4. Casing and Cementing Program

13-3/8" Surface to 450':	Cement to surface with 360 sxs Class "C" with 2% $\text{CaCl}_2$
8-5/8" Intermediate to 2800':	Cement to surface with 2200 sxs Modified Lite followed by 300 sxs Class "C" with 2% $\text{CaCl}_2$
5-1/2" Production to 9,650':	Cement to 2500' with 200 sx Class "H" PozMix; tail in with 100 sx Class "H". Second stage 550 sx Class "H". Possible stage tool setting @ 7500'.

RECEIVED

SEP 17 1991

GOV  
REGAL OFFICE

