

Submit to Appropriate
District Office
State Lease -- 6 copies
Fee Lease -- 5 copies

State of New Mexico
Energy, Minerals and Natural Resources Department

Form C-101
Revised 1-1-89

OIL CONSERVATION DIVISION

DISTRICT I
P.O. Box 1980, Hobbs, NM 88240

DISTRICT II
P.O. Drawer DD, Artesia, NM 88210

DISTRICT III
1000 Rio Brazos Rd., Aztec, NM 87410

P.O. Box 2088
Santa Fe, New Mexico 87504-2088

API NO. (assigned by OCD on New Wells)

30-025-31582

5. Indicate Type of Lease

STATE ☐

FEE ☒

6. State Oil & Gas Lease No.

APPLICATION FOR PERMIT TO DRILL, DEEPEN, OR PLUG BACK

1a. Type of Work:

DRILL ☒

RE-ENTER ☐

DEEPEN ☐

PLUG BACK ☐

b. Type of Well:

OIL
WELL ☐

GAS
WELL ☐

OTHER

INJECTION

SINGLE
ZONE ☐

MULTIPLE
ZONE ☐

7. Lease Name or Unit Agreement Name

NORTH MONUMENT GRAYBURG
SAN ANDRES BLK 17

2. Name of Operator

AMERADA HESS CORPORATION

3. Address of Operator

ATTN: DRLG SVS, P.O. BOX 2040, TULSA, OK 74102

8. Well No.

11

9. Pool name or Wildcat

EUNICE MONUMENT G/SA

4. Well Location

Unit Letter K : 2125 Feet From The WEST Line and 1854 Feet From The SOUTH Line

Section 33

Township

19S

Range

37E

NMPM

LEA

County

10. Proposed Depth

4042'

11. Formation

GRAYBURG SAN ANDRES

12. Rotary or C.T.

ROTARY

13. Elevations (Show whether DF, RT, GR, etc.)

3560

14. Kind & Status Plug. Bond

BLANKET CURRENT

15. Drilling Contractor

GRACE

16. Approx. Date Work will start

FEB. 1, 1992

17. PROPOSED CASING AND CEMENT PROGRAM

SIZE OF HOLE	SIZE OF CASING	WEIGHT PER FOOT	SETTING DEPTH	SACKS OF CEMENT	EST. TOP
14-3/4	11-3/4	42	1300	690	SURFACE
11	8-5/8	24	2500	450	SURFACE
7-7/8	5-1/2	14	4042	515	SURFACE

SET 50' OF 16" CONDUCTOR PIPE. MOVE IN GRACE DRILLING AND SPUD 14-3/4" HOLE AND DRILL TO 1300'. SET AND CEMENT 11-3/4" CASING W/415 SX PACESETTER LITE (C) + 6.00% GEL (BENTONITE) + 2.00% CACL2 + 0.25 PPS CELLO-SEAL + 95% WATER, SW=12.69 PPG SY=1.84 CU.FT./SX. TAIL W/275 SX CLASS "C" + 2.00 CACL2 + 56% WATER, SW=14.79 PPG SY=1.33 CU.FT./SX.

DRILL 11" HOLE TO 2500'. SET AND CEMENT 8-5/8" CSG. @ 2500' W/250 SX PACESETTER LITE (C) + 6.00% GEL (BENTONITE) + 1.0% CACL2 + 0.25 PPS CELLO-SEAL + 95% WATER SW=12.69 PPG SY=1.84 CU.FT./SX. TAIL W/200 SX CLS "C" + 1.00% CACL2 + 56% WATER. SW=14.79 PPG SY=1.33 CU.FT./SX.

DRILL 7-7/8" HOLE TO 4052'. SET AND CEMENT 5-1/2" CSG. @ 4025' W/310 SX PACESETTER LITE (C) + 6.00% GEL (BENTONITE) + 105.0% WATER SW=12.37 PPG SY=1.98 CU.FT./SX. TAIL W/205 SX CLASS C + 56% WATER SW=14.79 PPG SY=1.33 CU.FT./SX.

RELEASE RIG & TURN WELL OVER TO PRODUCTION FOR COMPLETION.

IN ABOVE SPACE DESCRIBE PROPOSED PROGRAM: IF PROPOSAL IS TO DEEPEN OR PLUG BACK, GIVE DATA ON PRESENT PRODUCTIVE ZONE AND PROPOSED NEW PRODUCTIVE ZONE. GIVE BLOWOUT PREVENTER PROGRAM, IF ANY.

I hereby certify that the information above is true and complete to the best of my knowledge and belief.

SIGNATURE

J. R. Wilson

TITLE

SUPERVISOR DRLG ADMIN SVS

DATE 01/03/92

TYPE OR PRINT NAME

J. R. WILSON

TELEPHONE NO. 918 599 4226

(This space for State Use)

APPROVED BY JERRY DEXTON

STATE ENGINEER

APPROVED BY

TITLE

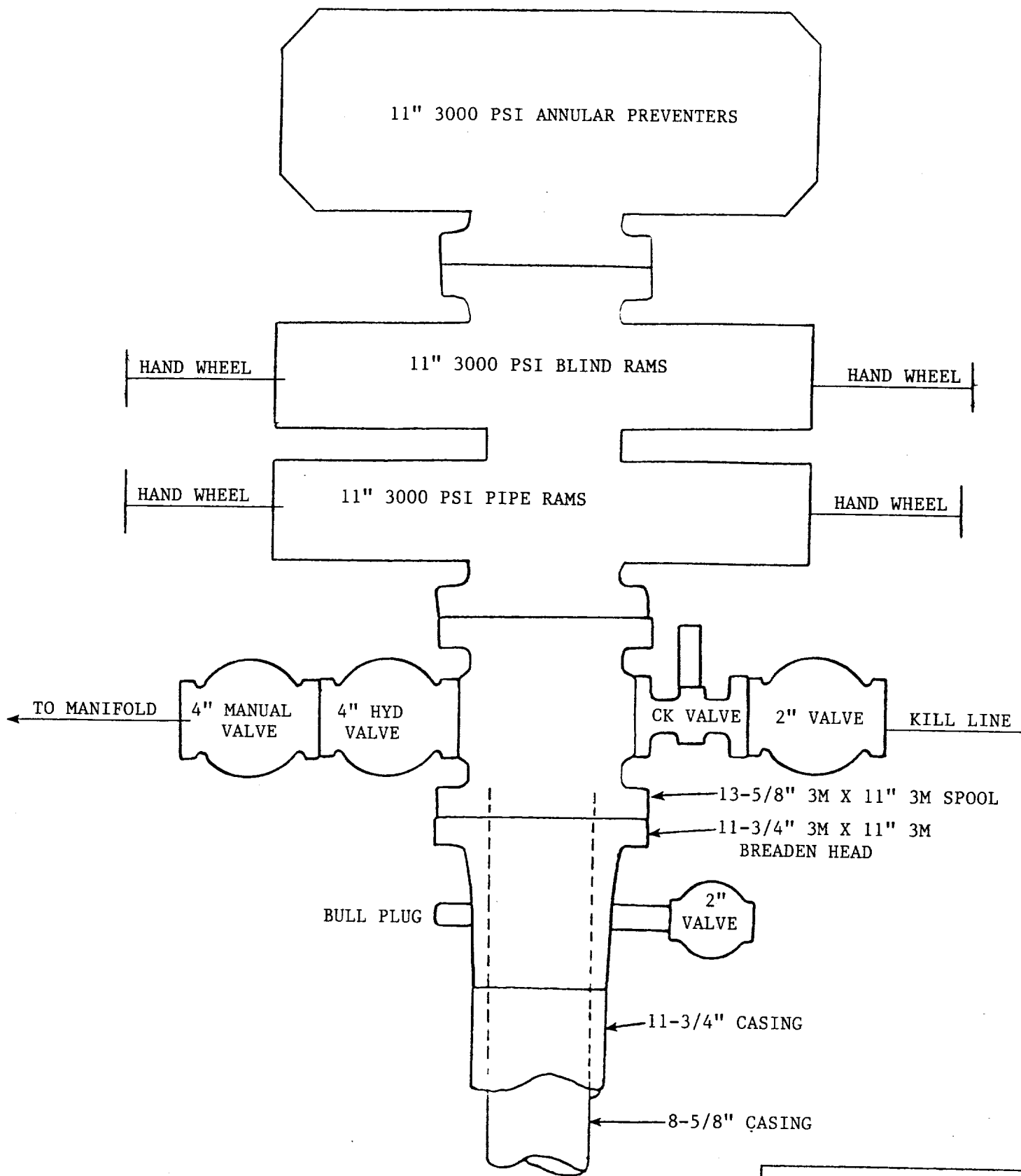
DATE

CONDITIONS OF APPROVAL, IF ANY:

R-9596 Injection well

Permit Expires 6 Months From Approval
Date Unless Drilling Underway.

JAN 09 '92



NMG/SA BLK 17

#11

**MEXICO OIL CONSERVATION COMMISSION
WELL LOCATION AND ACREAGE DEDICATION PLAT**

Form C-102
Supersedes C-128
Effective 1-1-83

All distances must be from the outer boundaries of the Section

Fee

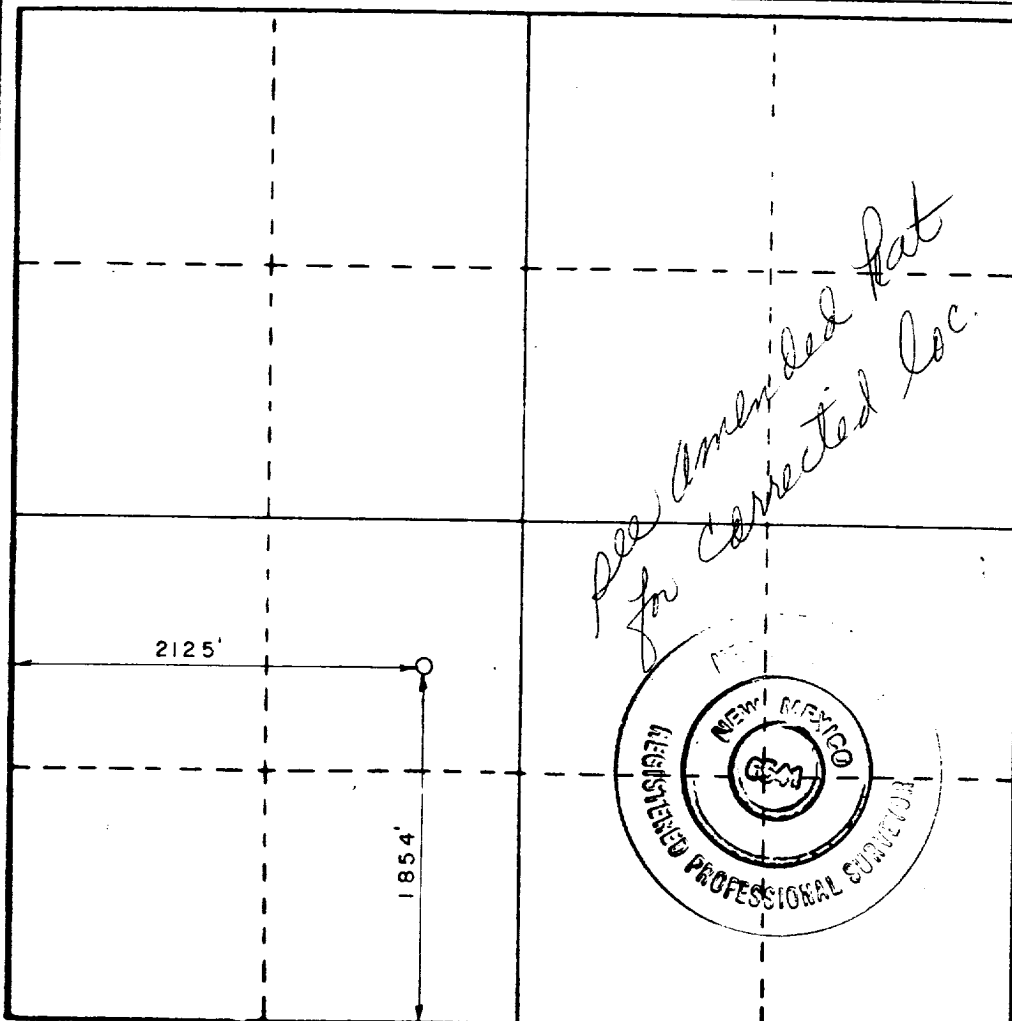
Operator AMERADA-HESS CORPORATION			Lease <i>N. Monument G/SA unit</i> Injection		Well No. 11
Unit Letter K	Section 33	Township 19S	Range 37E	County Lea	
Actual Footage Location of Well: <div style="display: flex; justify-content: space-between;"> 2125 feet from the West line and 1854 feet from the South line </div>					
Ground Level Elev. 3560	Producing Formation GRAYBURG SAN ANDRES	Pool EUNICE MONUMENT G/SA		Dedicated Acreage: 40 Acres	

1. Outline the acreage dedicated to the subject well by colored pencil or hachure marks on the plat below.
2. If more than one lease is dedicated to the well, outline each and identify the ownership thereof (both as to working interest and royalty).
3. If more than one lease of different ownership is dedicated to the well, have the interests of all owners been consolidated by communitization, unitization, force-pooling, etc?

☐ Yes ☐ No If answer is "yes," type of consolidation UNITIZED ORDER #R-9494

If answer is "no," list the owners and tract descriptions which have actually been consolidated. (Use reverse side of this form if necessary.) UNITIZED ORDER #R-9494

No allowable will be assigned to the well until all interests have been consolidated (by communitization, unitization, forced-pooling, or otherwise) or until a non-standard unit, eliminating such interests, has been approved by the Commission.



CERTIFICATION

I hereby certify that the information contained herein is true and complete to the best of my knowledge and belief.

J. R. Wilson

Name
J. R. WILSON
Position
SUPERVISOR DRLG ADMIN SVS
Company
AMERADA HESS CORPORATION
Date
01/02/92

I hereby certify that the well location shown on this plat was plotted from field notes of actual surveys made by me or under my supervision, and that the same is true and correct to the best of my knowledge and belief.

December 12, 1991

Date Surveyed

Registered Professional Engineer and/or Land Surveyor

Heath King

Certificate No.

R. E. S. 6541



76-10-192
50-10-192
26-10-192
2-5-43
ELF

1992

1992

1992