

Submit to Appropriate
District Office
State Lease - 6 copies
Fee Lease - 5 copies

State of New Mexico
Energy, Minerals and Natural Resources Department

Form C-101
Revised 1-1-89

OIL CONSERVATION DIVISION

DISTRICT I
P.O. Box 1980, Hobbs, NM 88240

DISTRICT II
P.O. Drawer DD, Artesia, NM 88210

DISTRICT III
1000 Rio Brazos Rd., Aztec, NM 87410

P.O. Box 2088
Santa Fe, New Mexico 87504-2088

API NO. (assigned by OCD on New Wells)

30-025-31506

5. Indicate Type of Lease

STATE ☐

FEE ☒

6. State Oil & Gas Lease No.

APPLICATION FOR PERMIT TO DRILL, DEEPEN, OR PLUG BACK

1a. Type of Work:

DRILL ☒

RE-ENTER ☐

DEEPEN ☐

PLUG BACK ☐

b. Type of Well:

OIL
WELL ☒

GAS
WELL ☐

OTHER ☐

SINGLE
ZONE ☐

MULTIPLE
ZONE ☐

7. Lease Name or Unit Agreement Name

NORTH MONUMENT GRAYBURG
SAN ANDRES UNIT BLK 15

2. Name of Operator

AMERADA HESS CORPORATION

8. Well No.

10

3. Address of Operator

ATTN: DRILLING SVS, P.O. BOX 2040 TULSA, OK. 74102

9. Pool name or Wildcat

EUNICE MONUMENT G/SA

4. Well Location

Unit Letter J : 1830 Feet From The SOUTH Line and 1980 Feet From The EAST Line

Section 31 Township 19S Range 37E NMPM LEA County

10. Proposed Depth

3980

11. Formation

GRAYBURG SAN ANDRES

12. Rotary or C.T.

ROTARY

13. Elevations (Show whether DF, RT, GR, etc.)

3620 3569.4

14. Kind & Status Plug Bond

BLANKET CURRENT

15. Drilling Contractor

GRACE

16. Approx. Date Work will start

JAN. 15, 1992

17. PROPOSED CASING AND CEMENT PROGRAM

SIZE OF HOLE	SIZE OF CASING	WEIGHT PER FOOT	SETTING DEPTH	SACKS OF CEMENT	EST. TOP
17-1/2	13-3/8	48	1150	945	SURFACE
12-1/4	9-5/8	36	2430	905	SURFACE
8-3/4	7	20	3980	450	SURFACE

SET 50' OF 20" CONDUCTOR. MOVE IN GRACE DRILLING AND SPUD 17-1/2" HOLE & DRILL TO 1150'. SET AND CEMENT 13-3/8" CASING W/670 SX 65/35 (C+POZ) + 6% GEL + 2% CACL2 + 1/4 # CELLOFLAKE. TAIL W/ 275 SX CLASS C + 2% CACL2.

DRILL 12-1/4" HOLE TO 2430'. SET AND CEMENT 9-5/8' CSG. @ 2430'. W/630 SX PACESETTER LITE (C) + 6.00% GEL (BENTONITE) + 2.00% CACL2 + 0.25 PPS CELLO-SEAL + 95% WATER, SW=12.69 SY-1.84 CU.FT/SX. TAIL W/275 SX CLASS C + 2.00% CACL2 + 56.0% WATER. SW=14.79 SY-1.33.

DRILL 8-3/4" HOLE TO 3980' T.D. SET AND CEMENT 7" PRODUCTION CASING W/275 SX PACESETTER LITE (C) + 6.00% GEL (BENTONITE) + 105% WATER, SW=12.37 PPG SY=1.98. TAIL W/175 SX CLASS C + 56.00% WATER SW=14.79 PPG SY=1.33 CU.FT./SX.

TURN WELL OVER TO PRODUCTION FOR COMPLETION.

IN ABOVE SPACE DESCRIBE PROPOSED PROGRAM: IF PROPOSAL IS TO DEEPEN OR PLUG BACK, GIVE DATA ON PRESENT PRODUCTIVE ZONE AND PROPOSED NEW PRODUCTIVE ZONE. GIVE BLOWOUT PREVENTER PROGRAM, IF ANY.

I hereby certify that the information above is true and complete to the best of my knowledge and belief.

SIGNATURE J. R. WILSON TITLE SUPERVISOR DRLG ADMIN SVS DATE 01/01/92

TYPE OR PRINT NAME J. R. WILSON

TELEPHONE NO. 918 599 4226

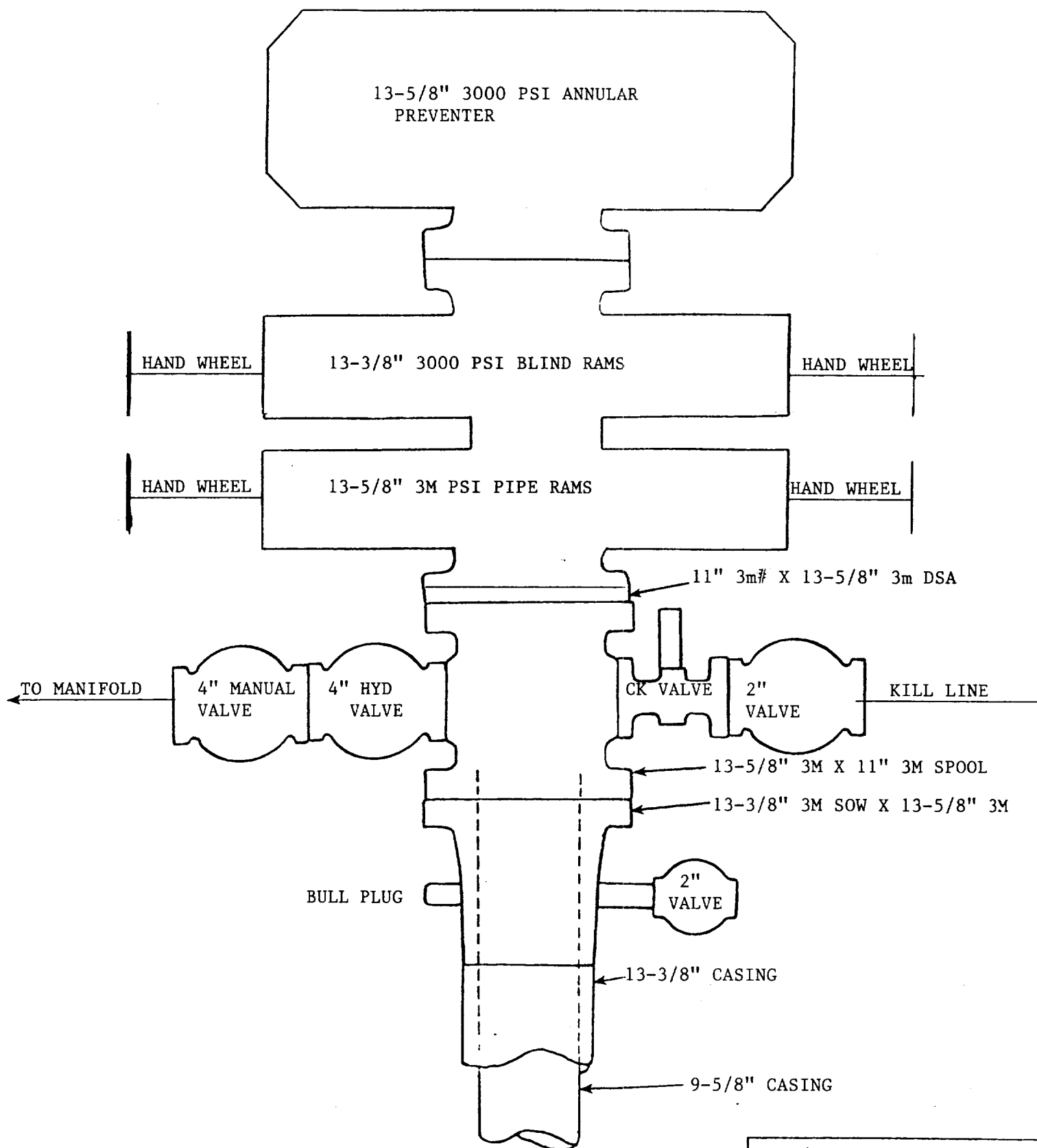
(This space for State Use)

APPROVED BY TITLE DATE

CONDITIONS OF APPROVAL, IF ANY:

Permit Expires 6 Months From Approval
Date Unless Drilling Underway.

JAN 09 '92



NMG/SA
#10

**MEXICO OIL CONSERVATION COMMISSION
WELL LOCATION AND ACREAGE DEDICATION PLAT**

Form C-102
Supersedes C-128
Effective 1-4-83

All distances must be from the outer boundaries of the Section

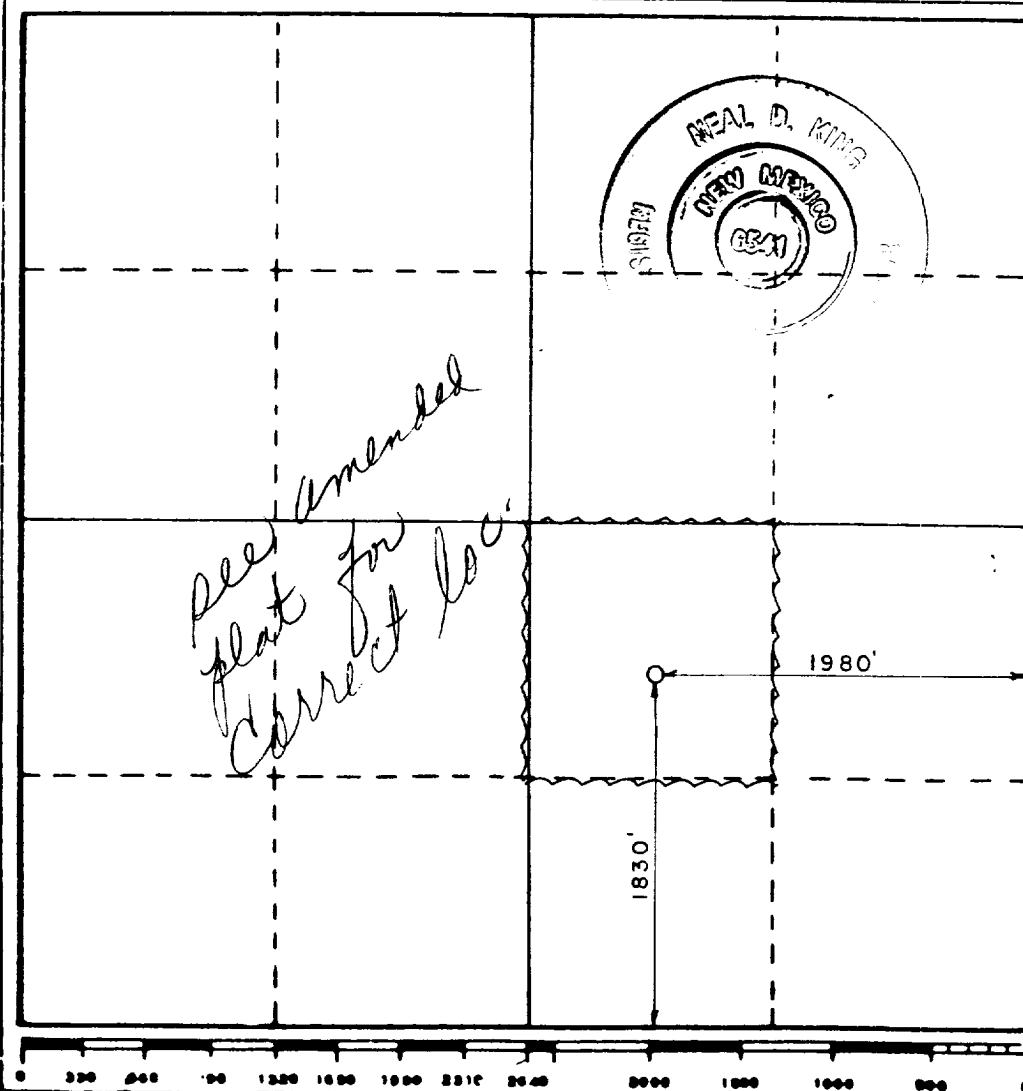
Operator AMERADA-HESS CORPORATION			Lease <i>N. Monument H/SA Unit Production Belk 15</i>		Well No. 10
Unit Letter J	Section 31	Township 19S	Range 37E	County Lea	
Actual Footage Location of Well: 1830 feet from the South line and 1980 feet from the East line					
Ground Level Elev. 3569.4	Producing Formation GRAYBURG SAN ANDRES		Pool EUNICE MONUMENT G/SA		Dedicated Acreage: 40 Acres

1. Outline the acreage dedicated to the subject well by colored pencil or hatchure marks on the plat below.
2. If more than one lease is dedicated to the well, outline each and identify the ownership thereof (both as to working interest and royalty).
3. If more than one lease of different ownership is dedicated to the well, have the interests of all owners been consolidated by communitization, unitization, force-pooling, etc?

☐ Yes ☐ No If answer is "yes," type of consolidation UNITIZED ORDER # R-9494

If answer is "no," list the owners and tract descriptions which have actually been consolidated. (Use reverse side of this form if necessary.) UNITIZED ORDER #R-9494

No allowable will be assigned to the well until all interests have been consolidated (by communitization, unitization, forced-pooling, or otherwise) or until a non-standard unit, eliminating such interests, has been approved by the Commission.



CERTIFICATION

I hereby certify that the information contained herein is true and complete to the best of my knowledge and belief.

J. R. Wilson

Name
J. R. WILSON
Position
SUPERVISOR DRLG ADMIN SVS
Company
AMERADA HESS CORPORATION
Date
01/02/92

I hereby certify that the well location shown on this plat was plotted from field notes of actual surveys made by me or under my supervision, and that the same is true and correct to the best of my knowledge and belief.

December 12, 1991

Date Surveyed

Registered Professional Engineer
and or Land Surveyor

Neal D. King
Certificate No.
R.L.S. 6541

Recd 2-5-93

ELF

7-27-93
JAN 27 1992
FBI
FEDERAL BUREAU OF INVESTIGATION
U.S. DEPARTMENT OF JUSTICE