

Submit to Appropriate
District Office
State Lease -- 6 copies
Fee Lease -- 5 copies

State of New Mexico
Energy, Minerals and Natural Resources Department

Form C-101
Revised 1-1-89

OIL CONSERVATION DIVISION

DISTRICT I
P.O. Box 1980, Hobbs, NM 88240

P.O. Box 2088
Santa Fe, New Mexico 87504-2088

DISTRICT II
P.O. Drawer DD, Artesia, NM 88210

DISTRICT III
1000 Rio Brazos Rd., Aztec, NM 87410

API NO. (assigned by OCD on New Wells)

30-025-31511

5. Indicate Type of Lease

STATE ☒

FEE ☐

6. State Oil & Gas Lease No.

B-218-1

APPLICATION FOR PERMIT TO DRILL, DEEPEN, OR PLUG BACK

1a. Type of Work:

DRILL ☒

RE-ENTER ☐

DEEPEN ☐

PLUG BACK ☐

b. Type of Well:

OIL
WELL ☒

GAS
WELL ☐

OTHER ☐

SINGLE
ZONE ☐

MULTIPLE
ZONE ☐

7. Lease Name or Unit Agreement Name

NORTH MONUMENT GRAYBURG
SAN ANDRES BLK 9

2. Name of Operator

AMERADA HESS CORPORATION

3. Address of Operator

ATTN: DRLG SVS. P.O. BOX 2040, TULSA, OK. 74102

8. Well No.

25

9. Pool name or Wildcat

EUNICE MONUMENT G/SA

4. Well Location

Unit Letter I : 2523.6 Feet From The SOUTH Line and 235 Feet From The EAST Line

Section 25 Township 19S Range 36E NMPM LEA, County

10. Proposed Depth

4060

11. Formation

GRAYBURG SAN ANDRES

12. Rotary or C.T.

ROTARY

13. Elevations (Show whether DF, RT, GR, etc.)

3697 3638

14. Kind & Status Plug. Bond

BLANKET CURRENT

15. Drilling Contractor

GRACE

16. Approx. Date Work will start

JANUARY 15,

17.

PROPOSED CASING AND CEMENT PROGRAM

SIZE OF HOLE	SIZE OF CASING	WEIGHT PER FOOT	SETTING DEPTH	SACKS OF CEMENT	EST. TOP
12-1/4"	9-5/8"	36	1200	475	SURFACE
8-3/4"	7"	20	4060	490	SURFACE

SET 50' OF 14" CONDUCTOR PIPE. MOVE IN GRACE DRILLING AND SPUD 12-1/4" HOLE AND DRILL TO 1200'
SET AND CEMENT 9-5/8" CASING W/250 SX PACESETTER LITE (C) + 6.00% GEL (BENTONITE) + 2.00% CACL₂
+ 0.25 PPS. CELLO-SEAL + 95.00% WATER, SW=12.69 PPG., SY=1.84 CU.FT./SX. TAIL W/225 SX CLASS
"C" + 2.00% CACL₂ + 56.00% WATER, SW=14.79, SY=1.33 CU.FT./SX.

DRILL 8-3/4" HOLE TO 4060', SET AND CEMENT 7" CASING @ 4060' W/315 SX PACESETTER LITE (C) +
6.00% GEL (BENTONITE) + 105% WATER, SW=12.37, SY=1.98 CU.FT./SX. TAIL W/175 SX CLASS "C" +
56% WATER, SW=14.79 PPG., SY=1.33 CU.FT./SX.

RIG DOWN ROTARY TOOLS & TURN WELL OVER TO PRODUCTION FOR COMPLETION.

IN ABOVE SPACE DESCRIBE PROPOSED PROGRAM: IF PROPOSAL IS TO DEEPEN OR PLUG BACK, GIVE DATA ON PRESENT PRODUCTIVE ZONE AND PROPOSED NEW PRODUCTIVE
ZONE. GIVE BLOWOUT PREVENTER PROGRAM, IF ANY.

I hereby certify that the information above is true and complete to the best of my knowledge and belief.

SIGNATURE

J. R. Wilson

TITLE SUPERVISOR, DRLG ADMIN. SV. DATE 12/20/91

TYPE OR PRINT NAME J. R. WILSON

TELEPHONE NO. 918 599 4226

(This space for State Use)

ORIGINAL SIGNED BY JERRY SEXTON

DISTRICT I SUPERVISOR

APPROVED BY

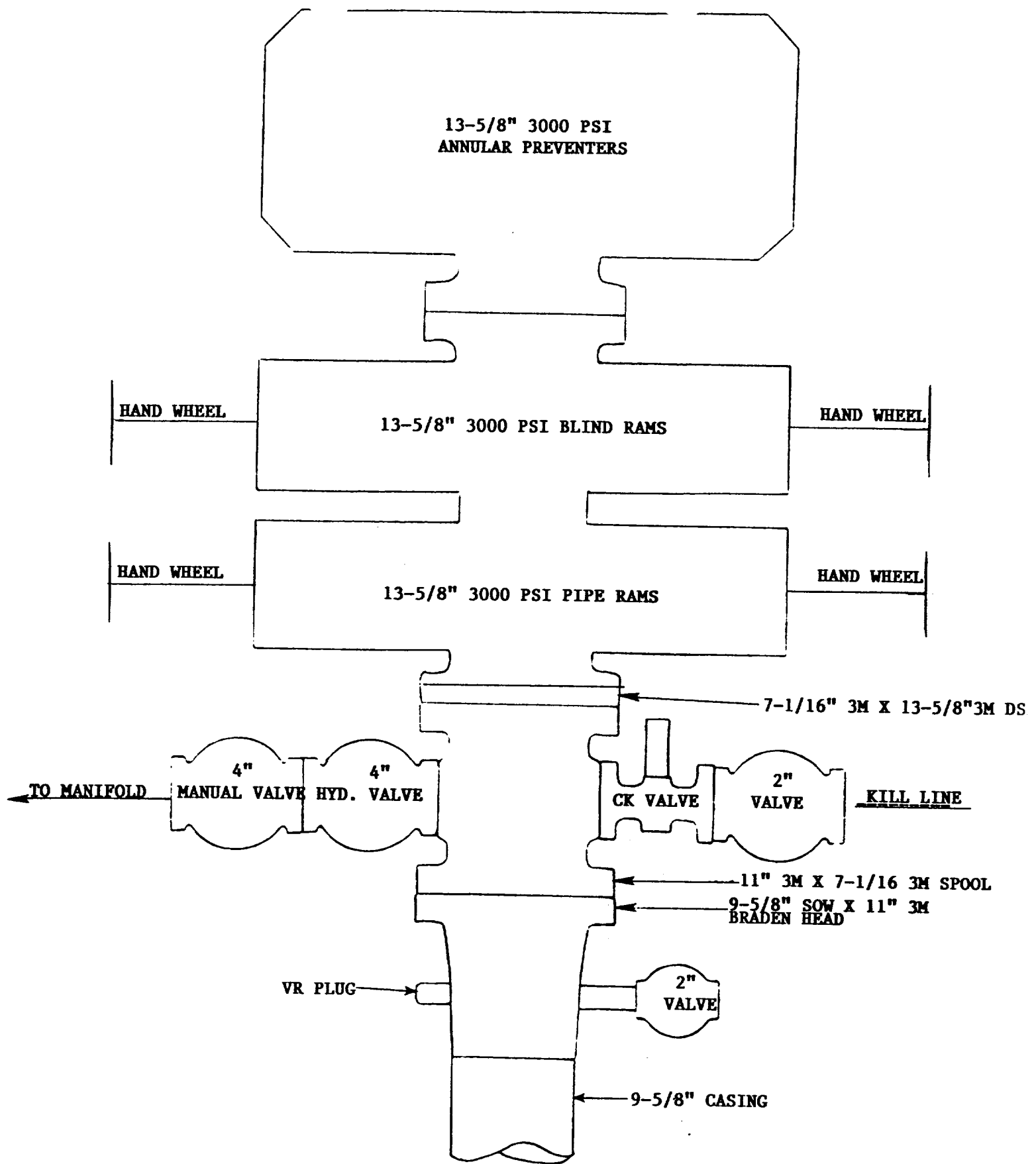
TITLE

DATE

CONDITIONS OF APPROVAL, IF ANY:

782-3097

FEB 24 1992



**MEXICO OIL CONSERVATION COMMISSION
WELL LOCATION AND ACREAGE DEDICATION PLAT**

Form C-102
Supersedes C-120
Effective 1-4-65

8-218-1

All distances must be from the outer boundaries of the Section

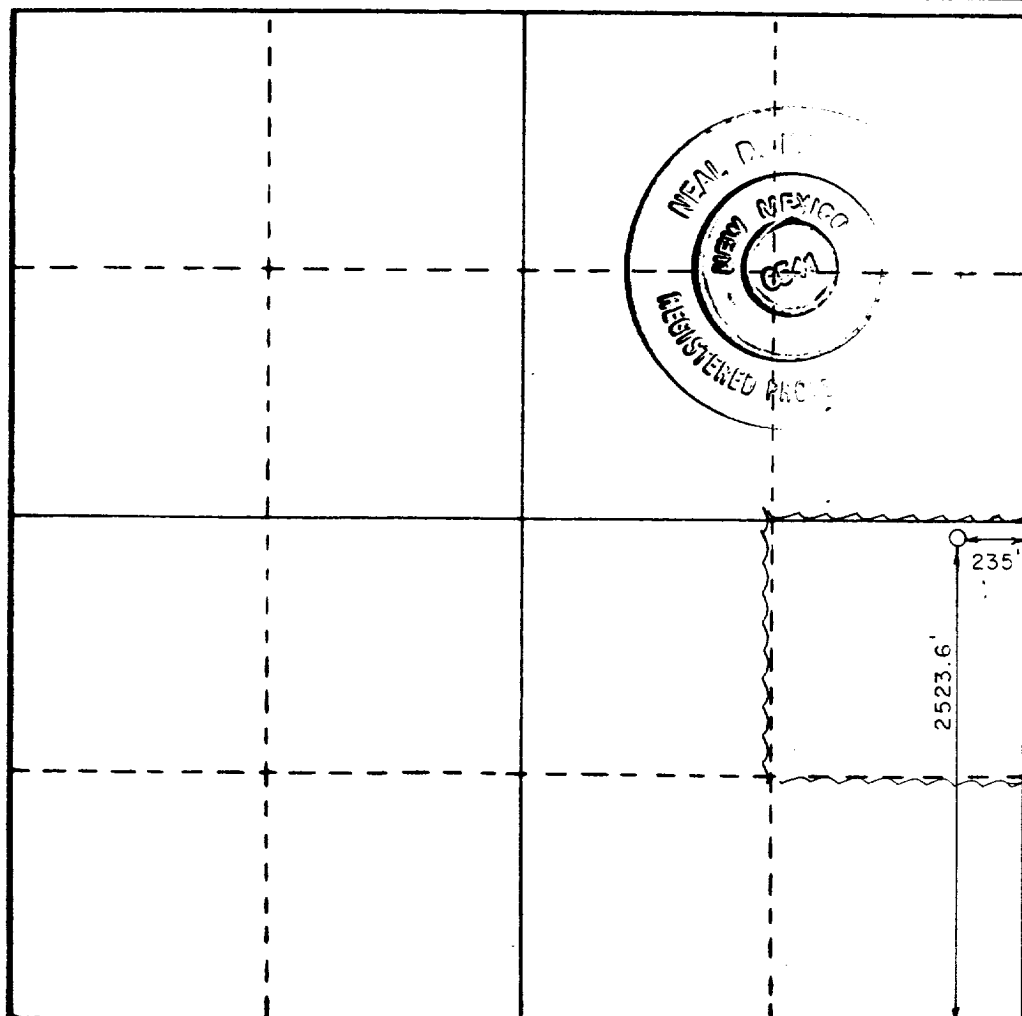
Operator AMERADA-HESS CORPORATION			Lease Production		Well No. 25
Unit Letter I	Section 25	Township 19S	Range 36E	County Lea	
Actual Footage Location of Well: 2523.6 feet from the South line and 235 feet from the East line					
Ground Level Elev. 3638	Producing Formation GRAYBURG SAN ANDRES		Pool EUNICE MONUMENT G/SA		Dedicated Acreage: 40 Acres

1. Outline the acreage dedicated to the subject well by colored pencil or hatchure marks on the plat below.
2. If more than one lease is dedicated to the well, outline each and identify the ownership thereof (both as to working interest and royalty).
3. If more than one lease of different ownership is dedicated to the well, have the interests of all owners been consolidated by communitization, unitization, force-pooling, etc?

☐ Yes ☐ No If answer is "yes," type of consolidation UNITIZED ORDER #R-9494

If answer is "no," list the owners and tract descriptions which have actually been consolidated. (Use reverse side of this form if necessary.) UNITIZED ORDER #R-9494

No allowable will be assigned to the well until all interests have been consolidated (by communitization, unitization, forced-pooling, or otherwise) or until a non-standard unit, eliminating such interests, has been approved by the Commission.



CERTIFICATION

I hereby certify that the information contained herein is true and complete to the best of my knowledge and belief.

J. R. Wilson
Name
J. R. WILSON
Position
SUPERVISOR, DRLG ADMIN. SVS.
Company
AMERADA HESS CORPORATION
Date
12/20/91

I hereby certify that the well location shown on this plat was plotted from field notes of actual surveys made by me or under my supervision, and that the same is true and correct to the best of my knowledge and belief.

December 10, 1991
Date Surveyed

Registered Professional Engineer
and or Land Surveyor

Heath R. King
Certificate No. **R. L. S. 6541**

