

Submit to Appropriate  
District Office  
State Lease - 6 copies  
Fee Lease - 5 copies

State of New Mexico  
Energy, Minerals and Natural Resources Department

Form C-101  
Revised 1-1-89

OIL CONSERVATION DIVISION  
P.O. Box 2088  
Santa Fe, New Mexico 87504-2088

DISTRICT I  
P.O. Box 1980, Hobbs, NM 88240

DISTRICT II  
P.O. Drawer DD, Artesia, NM 88210

DISTRICT III  
1000 Rio Brazos Rd., Aztec, NM 87410

API NO. (assigned by OCD on New Wells)	30-025-31525
5. Indicate Type of Lease	STATE <input checked="" type="checkbox"/> FEE <input type="checkbox"/>
6. State Oil & Gas Lease No.	V-1618
7. Lease Name or Unit Agreement Name	GANSO STATE
8. Well No.	4
9. Pool name or Wildcat	Hat Mesa, Delaware

APPLICATION FOR PERMIT TO DRILL, DEEPEN, OR PLUG BACK

1a. Type of Work:	DRILL <input checked="" type="checkbox"/> RE-ENTER <input type="checkbox"/> DEEPEN <input type="checkbox"/> PLUG BACK <input type="checkbox"/>
b. Type of Well:	OIL WELL <input checked="" type="checkbox"/> GAS WELL <input type="checkbox"/> OTHER <input type="checkbox"/> SINGLE ZONE <input type="checkbox"/> MULTIPLE ZONE <input type="checkbox"/>
2. Name of Operator	STRATA PRODUCTION COMPANY
3. Address of Operator	POST OFFICE BOX 1030, ROSWELL, NM 88202
4. Well Location	Unit Letter I : 1860' Feet From The South Line and 990 Feet From The East Line

Section 32	Township 20 South	Range 33 East	NMPM	Lea	County
10. Proposed Depth			11. Formation	12. Rotary or C.T.	
8400'			Delaware	Rotary	
13. Elevations (Show whether DF, RT, GR, etc.)		14. Kind & Status Plug. Bond	15. Drilling Contractor	16. Approx. Date Work will start	
3638' GL		Statewide	WEK	02/17/92	

17. PROPOSED CASING AND CEMENT PROGRAM					
SIZE OF HOLE	SIZE OF CASING	WEIGHT PER FOOT	SETTING DEPTH	SACKS OF CEMENT	EST. TOP
17 1/2"	13 3/8"	48#	400'	Circulate	Surface
12 1/4"	8 5/8"	24#	3200'	Circulate	Surface
7 7/8"	5 1/2"	15# & 17#	8400'	Tie back to intermediate csg	

We propose to drill a 17 1/2" hole to 400' and set 13 3/8" csg. 13 3/8" csg will be cemented with enough cement to circulate to surface.

We then propose to drill a 12 1/4" hole to 3200' and set 3200' of 8 5/8" csg & circulate cement to surface. We will then drill a 7 7/8" hole to 8400' and log with CNL-FDC & DLL-MSFL GR logs. If the well is dry it will be plugged pursuant to NMOC rules and regulations. If the well is completed as a producer, 5 1/2" csg will be run and cemented with enough cement to tie back to intermediate string.

The hole from surface to 400' will be drilled with native mud. The hole from 400' to 3200' will be drilled with cut brine. The hole from 3200' to TD will be drilled with salt gel and starch to maintain adequate viscosity & water loss. SEE B.O.P DIAGRAM ATTACHED.

IN ABOVE SPACE DESCRIBE PROPOSED PROGRAM: IF PROPOSAL IS TO DEEPEN OR PLUG BACK, GIVE DATA ON PRESENT PRODUCTIVE ZONE AND PROPOSED NEW PRODUCTIVE ZONE. GIVE BLOWOUT PREVENTER PROGRAM, IF ANY.

I hereby certify that the information above is true and complete to the best of my knowledge and belief.

SIGNATURE Regina Finley TITLE Production Records DATE 02/10/92  
TYPE OR PRINT NAME Regina Finley TELEPHONE NO. 622-1127

(This space for State Use)

APPROVED BY OFFICIAL SIGNED BY JERRY SEXTON TITLE DISTRICT I SUPERVISOR DATE \_\_\_\_\_

CONDITIONS OF APPROVAL, IF ANY:

Permit Expires 6 Months From Approval  
Date Unless Drilling Underway.

Submit to Appropriate  
District Office  
State Lease - 4 copies  
Fee Lease - 3 copies

State of New Mexico  
Energy, Minerals and Natural Resources Department

Form C-102  
Revised 1-1-89

**OIL CONSERVATION DIVISION**

P.O. Box 2088  
Santa Fe, New Mexico 87504-2088

**DISTRICT I**  
P.O. Box 1980, Hobbs, NM 88240

**DISTRICT II**  
P.O. Drawer DD, Artesia, NM 88210

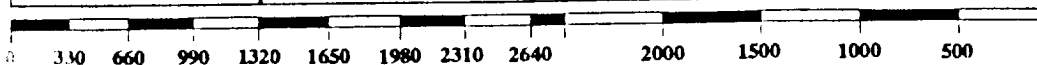
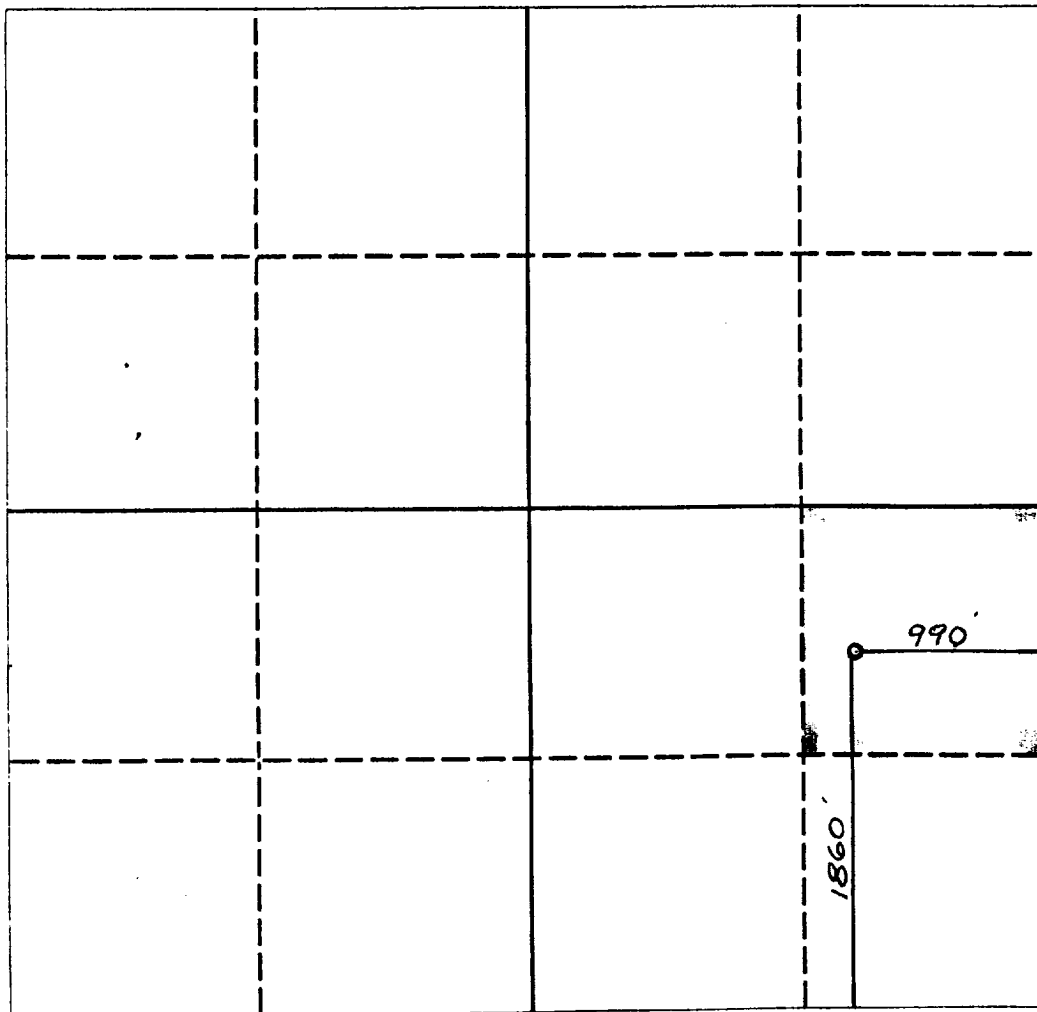
**DISTRICT III**  
1000 Rio Brazos Rd., Aztec, NM 87410

**WELL LOCATION AND ACREAGE DEDICATION PLAT**

All Distances must be from the outer boundaries of the section

Operator <b>STRATA PRODUCTION</b>			Lease <b>GANSO STATE</b>		Well No. <b>4</b>
Unit Letter <b>I</b>	Section <b>32</b>	Township <b>20 SOUTH</b>	Range <b>33 EAST</b>	County <b>LEA COUNTY, NM</b>	
Actual Footage Location of Well: <b>990</b> feet from the <b>EAST</b> line and <b>1860</b> feet from the <b>SOUTH</b> line					
Ground level Elev. <b>3638.</b>	Producing Formation <b>DELAWARE</b>	Pool <b>HAT MESA</b>		Dedicated Acreage: <b>40 Acres</b>	

- Outline the acreage dedicated to the subject well by colored pencil or hatchure marks on the plat below.
- If more than one lease is dedicated to the well, outline each and identify the ownership thereof (both as to working interest and royalty).
- If more than one lease of different ownership is dedicated to the well, have the interest of all owners been consolidated by communitization, unitization, force-pooling, etc.?  
☐ Yes ☐ No If answer is "yes" type of consolidation \_\_\_\_\_  
If answer is "no" list the owners and tract descriptions which have actually been consolidated. (Use reverse side of this form if necessary). \_\_\_\_\_  
No allowable will be assigned to the well until all interests have been consolidated (by communitization, unitization, forced-pooling, or otherwise) or until a non-standard unit, eliminating such interest, has been approved by the Division.



**OPERATOR CERTIFICATION**

I hereby certify that the information contained herein in true and complete to the best of my knowledge and belief.

Signature <i>Regina Finley</i>
Printed Name <b>REGINA FINLEY</b>
Position <b>PRODUCTION RECORDS MGR</b>
Company <b>STRATA PRODUCTION COMPANY</b>
Date <b>February 10, 1992</b>

**SURVEYOR CERTIFICATION**

I hereby certify that the well location shown on this plat was plotted from field notes of actual surveys made by me or under my supervision, and that the same is true and correct to the best of my knowledge and belief.

Date Surveyed <b>FEBRUARY 7, 1992</b>
Signature & Seal of Professional Surveyor <i>[Signature]</i> <b>NEW MEXICO</b> <b>5412</b> <b>PROFESSIONAL SURVEYOR</b>

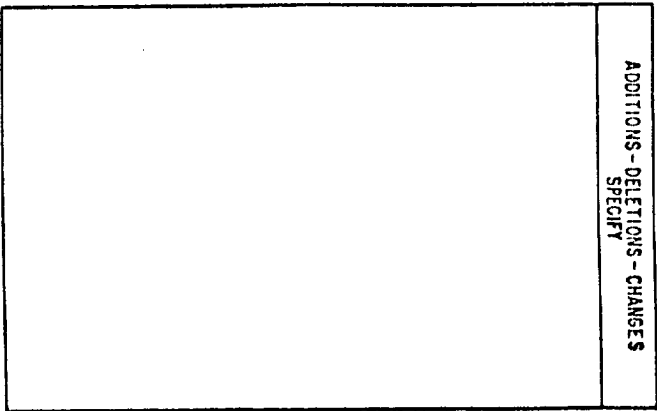
11 equipment should be at least 3,000 psi WP or higher unless otherwise specified.

- . Bell nipple.
- . Hydril bag type preventer
- . Ram type pressure operated blowout preventer with blind rams.
- . Flanged spool with one 3-inch and one 2-inch (minimum) outlet.
- . 2-inch (minimum) flanged plug or gate valve.
- . 2-inch by 2-inch by 2-inch (minimum) flanged tee.
- . 3-inch gate valve.
- . Ram type pressure operated blowout preventer with pipe rams.
- . Flanged type casing head with one side outlet.
- . 2-inch threaded (or flanged) plug or gate valve.  
Flanged on 5000# WP, threaded on 3000# WP or less.
- . 3-inch flanged spacer spool.
- . 3-inch by 2-inch by 2-inch by 2-inch flanged cross.
- . 2-inch flanged plug or gate valve.
- . 2-inch flanged adjustable choke.
- . 2-inch threaded flange.
- . 2-inch XXH nipple.
- . 2-inch forged steel 90° Ell.
- . Cameron (or equal.) threaded pressure gage.
- . Threaded flange.
- . 2-inch flanged tee.
- . 2-inch flanged plug or gate valve.
- . 2½-inch pipe, 300' to pit, anchored.
- . 2½-inch SE valve.
- . 2½-inch line to steel pit or separator.

#### NOTES:

- . Items 3, 4 and 8 may be replaced with double ram type preventer with side outlets between the rams.
- . The two valves next to the stack on the fill and kill line to be closed unless drill string is being pulled.
- . Kill line is for emergency use only. This connection shall not be used for filling.
- . Replacement pipe rams and blind rams shall be on location at all times.
- . Only type U, LSW and QRC ram type preventers with secondary seals are acceptable for 5000 psi WP and higher BOP stacks.
- . Type E ram-type BOP's with factory modified side outlets may be used on 3000 psi or lower WP BOP stacks.

ADDITIONS - DELETIONS - CHANGES SPECIFY	



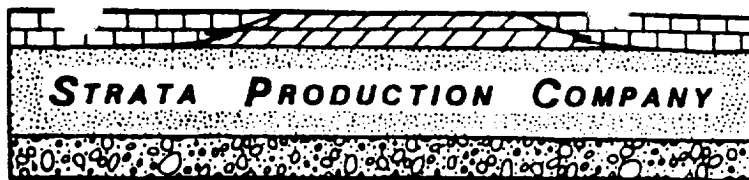
ADDITIONS - DELETIONS - CHANGES SPECIFY	

ADDITIONS - DELETIONS - CHANGES SPECIFY	

ADDITIONS - DELETIONS - CHANGES SPECIFY	

ADDITIONS - DELETIONS - CHANGES SPECIFY	

POST OFFICE DRAWER 1030  
ROSWELL, NM 88202-1030

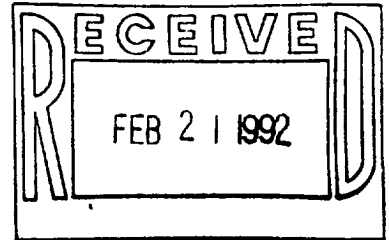


TELEPHONE (505) 622-1127  
FACSIMILE (505) 623-3533

200 WEST FIRST STREET, ROSWELL PETROLEUM BUILDING, SUITE 700

CERTIFIED MAIL P 340 891 296 <sup>ROSWELL, NEW MEXICO 88201</sup>  
February 10, 1992  
RETURN RECEIPT REQUESTED

Ms. Jill Ivey  
Mississippi Chemical Corporation  
Post Office Box 101  
Carlsbad, New Mexico 88220



Re: Application to Drill in Potash Area  
Ganso State #4 Well  
Section 32, T20S, R33E, NMPM  
Lea County, New Mexico

Dear Ms. Ivey:

In accordance with the State of New Mexico's Oil Conservation Division Rule R-111-P C (2) (3), we enclose the following for your review and further action:

- 1) Copy of Form C-101 Application to Drill,
- 2) Surface Location Plat of area

State of New Mexico Public Land records reflect Mississippi Chemical Corporation as the potash lessee covering the captioned lands. Strata Production Company, a New Mexico corporation, wishes to advise you of its intention to drill a well to 8400' at a location 1860' FSL and 990 FEL of Section 32. If you are in agreement that drilling at this location will not interfere with your potash operations, please sign and return a copy of this letter in the enclosed envelope within 20 days of receipt of same.

Should you have any questions or require additional information from this office, please advise.

Very truly yours,

*Regina Finley*  
Regina Finley

Production Records/Land Manager

**PLEASE EXECUTE AND  
RETURN THIS COPY**

AGREED TO AND ACCEPTED THIS 19 DAY OF FEBRUARY, 1992.

BY: *Ray Fool*

TITLE: GEN MANAGER

DATE: 2-19-92

NRF/ms

Enclosures

cc: Oil Conservation Division, Hobbs, NM