

Submit to Appropriate
District Office
State Lease - 6 copies
Fee Lease - 5 copies

State of New Mexico
Energy, Minerals and Natural Resources Department

Form C-101
Revised 1-1-89

OIL CONSERVATION DIVISION

P.O. Box 2088
Santa Fe, New Mexico 87504-2088

DISTRICT I
P.O. Box 1980, Hobbs, NM 88240

DISTRICT II
P.O. Drawer DD, Artesia, NM 88210

DISTRICT III
1000 Rio Brazos Rd., Aztec, NM 87410

API NO. (assigned by OCD on New Wells) 30-025-31696	
5. Indicate Type of Lease STATE <input checked="" type="checkbox"/> FEE <input type="checkbox"/>	
6. State Oil & Gas Lease No. LG 2750	
7. Lease Name or Unit Agreement Name Mobil Lea State	
8. Well No. 1	
9. Pool name or Wildcat Lea Delaware, Northeast	
10. Proposed Depth 6400'	
11. Formation Delaware	
12. Rotary or C.T. Rotary	
13. Elevations (Show whether DF, RT, GR, etc.) 3672.8 GR	
14. Kind & Status Plug. Bond Blanket	
15. Drilling Contractor L&M Drilling	
16. Approx. Date Work will start 09-21-92	
17. PROPOSED CASING AND CEMENT PROGRAM	
SIZE OF HOLE	SIZE OF CASING
14 3/4"	9 5/8"
8 3/4"	5 1/2"
WEIGHT PER FOOT	SETTING DEPTH
36#	1730' to ^{Top} Annhy
15.5#	6400'
SACKS OF CEMENT	EST. TOP
1200	Circ.
1400	Circ.
DV tool @ 5000'	

APPLICATION FOR PERMIT TO DRILL, DEEPEN, OR PLUG BACK	
1a. Type of Work: DRILL <input checked="" type="checkbox"/> RE-ENTER <input type="checkbox"/> DEEPEN <input type="checkbox"/> PLUG BACK <input type="checkbox"/>	
b. Type of Well: OIL WELL <input checked="" type="checkbox"/> GAS WELL <input type="checkbox"/> OTHER <input type="checkbox"/>	
2. Name of Operator ARMSTRONG ENERGY CORPORATION	
3. Address of Operator P.O. Box 1973, Roswell, New Mexico 88201	
4. Well Location Unit Letter <u>K</u> : <u>1800</u> Feet From The <u>South</u> Line and <u>1980</u> Feet From The <u>West</u> Line Section <u>2</u> Township <u>20</u> Range <u>34</u> NMPM <u>Lea</u> County	

10. Proposed Depth 6400'		11. Formation Delaware		12. Rotary or C.T. Rotary	
13. Elevations (Show whether DF, RT, GR, etc.) 3672.8 GR		14. Kind & Status Plug. Bond Blanket		15. Drilling Contractor L&M Drilling	
16. Approx. Date Work will start 09-21-92					
17. PROPOSED CASING AND CEMENT PROGRAM					
SIZE OF HOLE	SIZE OF CASING	WEIGHT PER FOOT	SETTING DEPTH	SACKS OF CEMENT	EST. TOP
14 3/4"	9 5/8"	36#	1730' to ^{Top} Annhy	1200	Circ.
8 3/4"	5 1/2"	15.5#	6400'	1400	Circ.
				DV tool @ 5000'	

Propose to drill the Mobil Lea State #1 well to test the Delaware formation. 9 5/8" casing will be run for surface casing. If lost circulation were to occur later, this allows us the option to run 7" intermediate casing and then drill to accomodate A 4 1/2" production string.

IN ABOVE SPACE DESCRIBE PROPOSED PROGRAM: IF PROPOSAL IS TO DEEPEN OR PLUG BACK, GIVE DATA ON PRESENT PRODUCTIVE ZONE AND PROPOSED NEW PRODUCTIVE ZONE. GIVE BLOWOUT PREVENTER PROGRAM, IF ANY.

I hereby certify that the information above is true and complete to the best of my knowledge and belief.

SIGNATURE Thomas K. Scroggin TITLE Operations Supervisor DATE 08-24-92
TYPE OR PRINT NAME Thomas K. Scroggin TELEPHONE NO. 623-8726

(This space for State Use)
ORIGINAL SIGNED BY JERRY SEXTON
DISTRICT I SUPERVISOR

APPROVED BY _____ TITLE _____ DATE _____

CONDITIONS OF APPROVAL, IF ANY:

Permit Expires 6 Months From Approval Date Unless Drilling Underway.

AUG 26 '92

Submit to Appropriate
District Office
State Lease - 4 copies
Fee Lease - 3 copies

State of New Mexico
Energy, Minerals and Natural Resources Department

Form C-102
Revised 1-1-89

OIL CONSERVATION DIVISION

P.O. Box 2088

Santa Fe, New Mexico 87504-2088

DISTRICT I

P.O. Box 1980, Hobbs, NM 88240

DISTRICT II

P.O. Drawer DD, Artesia, NM 88210

DISTRICT III

1000 Rio Brazos Rd., Aztec, NM 87410

WELL LOCATION AND ACREAGE DEDICATION PLAT

All Distances must be from the outer boundaries of the section

Operator ARMSTRONG ENERGY CORPORATION			Lease MOBIL LEA STATE		Well No. 1
Unit Letter K	Section 2	Township 20 SOUTH	Range 34 EAST	NMPM	County LEA

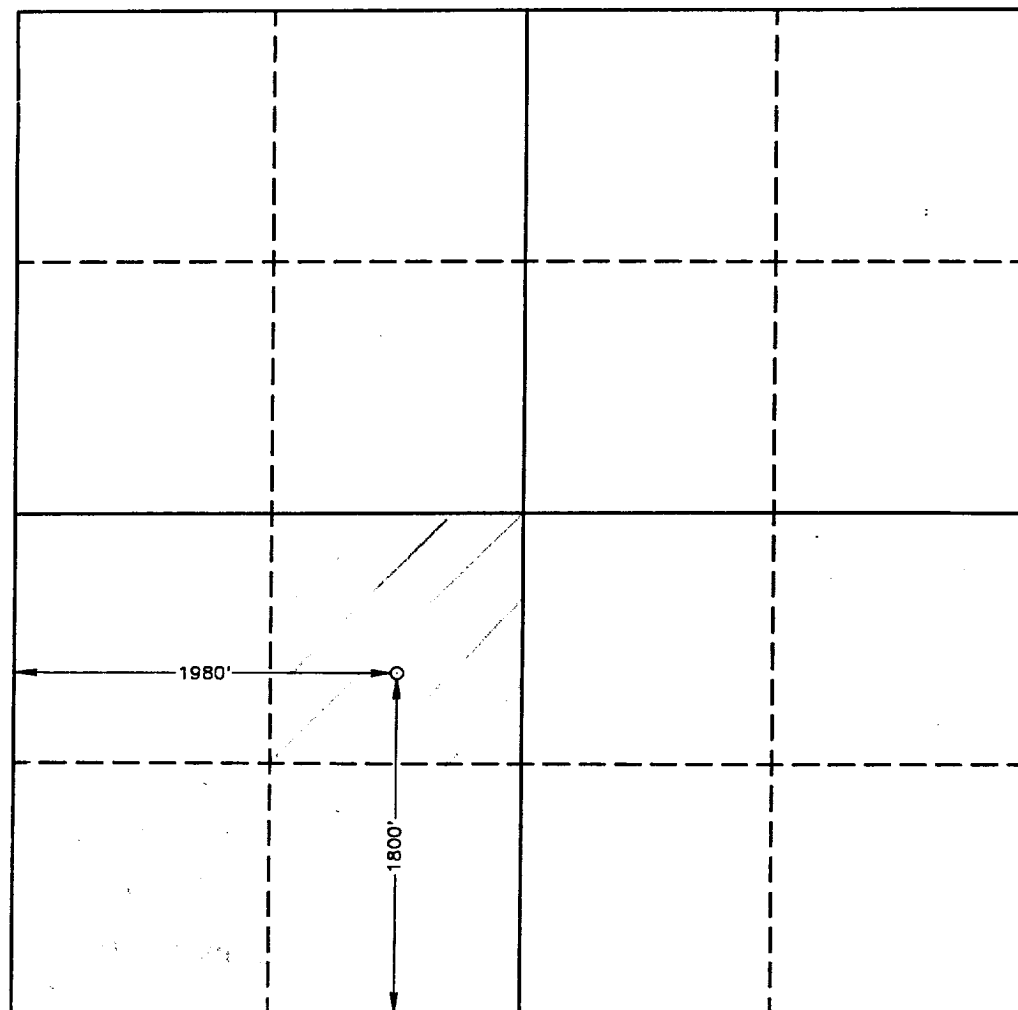
Actual Footage Location of Well:

1800 feet from the SOUTH line and		1980 feet from the WEST line	
Ground Level Elev. 3672.8'	Producing Formation Delaware	Pool NE Lea Delaware	Dedicated Acreage: 40 Acres

1. Outline the acreage dedicated to the subject well by colored pencil or hatchure marks on the plat below.
2. If more than one lease is dedicated to the well, outline each and identify the ownership thereof (both as to working interest and royalty).
3. If more than one lease of different ownership is dedicated to the well, have the interest of all owners been consolidated by communitization, unitization, force-pooling, etc.?
☐ Yes ☐ No If answer is "yes" type of consolidation _____

If answer is "no" list of owners and tract descriptions which have actually been consolidated. (Use reverse side of this form necessary.)

No allowable will be assigned to the well unit all interests have been consolidated (by communitization, unitization, forced-pooling, otherwise) or until a non-standard unit, eliminating such interest, has been approved by the Division.



OPERATOR CERTIFICATION

I hereby certify the the information contained herein is true and complete to the best of my knowledge and belief.

Signature

Printed Name

Thomas K. Scroggin

Position

Operations Supervisor

Company

Armstrong Energy Corp.

Date

08-24-92

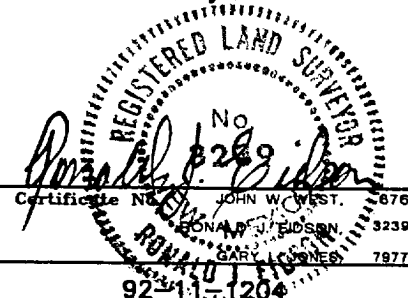
SURVEYOR CERTIFICATION

I hereby certify that the well location shown on this plat was plotted from field notes of actual surveys made by me or under my supervision, and that the same is true and correct to the best of my knowledge and belief.

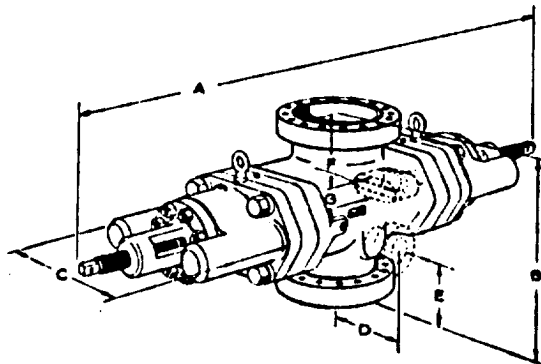
Date Surveyed

AUGUST 18, 1992

Signature & Seal of
Professional Surveyor



U BLOWOUT PREVENTER ENGINEERING DATA



Single Open Face Flanged U Blowout Preventer

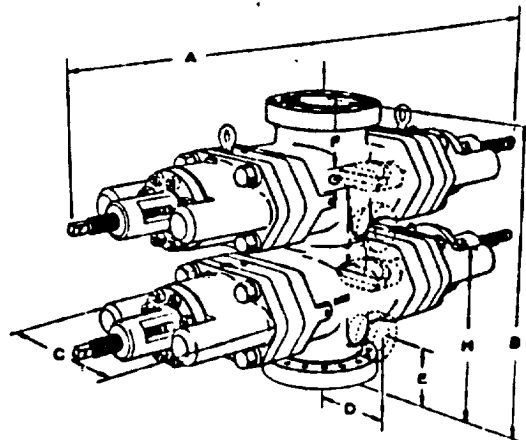
Side Outlets to 4" size (7-1/16" on 26-3/4" preventers) can be provided beneath each set of rams, on either or both sides of U preventers. Side outlet flanges are open face and have the same pressure rating as the vertical run flanges. Valve removal preparations can be provided. To obtain a quotation, the number and size of outlets should be specified.

Flanges conform to API Standard 6A. Type 6BX flanges are standard for 10,000 psi, 15,000 psi, and 20,000 psi working pressures and for 5000 psi working pressures for 13-5/8" and larger bore preventers.

Although most preventers have open face flanges or Cameron clamp hubs, preventers with studed flanges can be furnished.

Sizes and Dimensions are in inches. The over-all length "A" given in the tables does not include the optional wedgelocks. No spacers between rams are included in the table of dimensions of double ram models. Preventers with spacers to clear tool joints can be obtained on special order. For information on preventers with spacers, or sizes not listed, consult your Cameron representative.

Hydraulic Control Connections to operate rams and bonnets are 1" NPT. There are two connections for each set of rams. Hydraulic ram lock connections are 1/2" NPT.



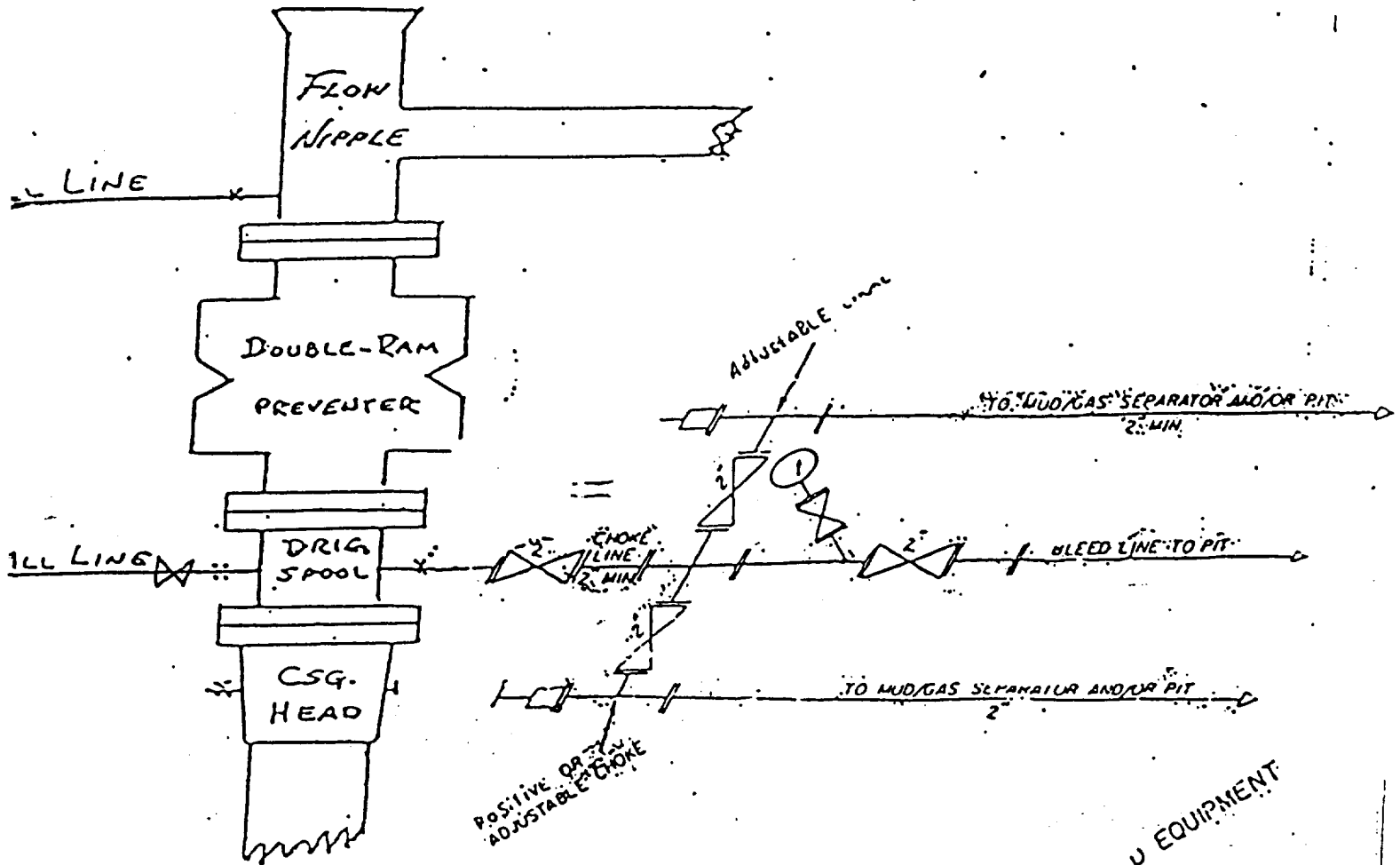
Double Open Face Flanged U Blowout Preventer

Engineering Data Designations. See Charts on Following Page

- A-1 Over-all length, bonnets closed, locking screws locked
- A-2 Over-all length, ram change, bonnets opened, locking screws unlocked
- B-1 Over-all height flanged
- B-2 As above, with Cameron clamp hubs
- C Over-all width without side outlets (max. width)
- D Centerline of preventer to outlet flange or hub face. Distance is variable.
- E-1 Centerline of side outlet (outlet below lower rams in double model) to bottom flange face
- E-2 As above, to bottom hub face
- F-1 Top of upper ram to top flange face
- F-2 As above, to top hub face
- G Ram height
- H-1 Centerline of side outlet between rams to bottom flange face
- H-2 As above, to bottom hub face
- J Top of lower ram to bottom of upper ram

E O P & CHOKE MANIFOLD

10"/900 Cameron SS Space Saver
3000# Working Pressure
3000# Working Pressure Choke Manifold



2M CHOKE MANIFOLD EQUIPMENT

10-11-71 x 44

ELF

RECEIVED

AUG 25 1992

OCD HOBBS OFFICE