

UNITED STATES
DEPARTMENT OF THE INTERIOR
BUREAU OF LAND MANAGEMENT

APPLICATION FOR PERMIT TO DRILL, DEEPEN, OR PLUG BACK

1a. TYPE OF WORK

DRILL ☒

DEEPEN ☐

PLUG BACK ☐

b. TYPE OF WELL

OIL
WELL ☒

GAS
WELL ☐

OTHER

SINGLE
ZONE ☒

MULTIPLE
ZONE ☐

2. NAME OF OPERATOR

Marathon Oil Company

3. ADDRESS OF OPERATOR

P. O. Box 552, Midland, TX 79702

4. LOCATION OF WELL (Report location clearly and in accordance with any State requirements.*)

At surface

1980' FSL & 760' FWL

Unit L

At proposed prod. zone

1980' FSL & 760' FWL

14. DISTANCE IN MILES AND DIRECTION FROM NEAREST TOWN OR POST OFFICE*

19 mi. west NW of Eunice, NM

15. DISTANCE FROM PROPOSED*

LOCATION TO NEAREST
PROPERTY OR LEASE LINE, FT.
(Also to nearest drlg. unit line, if any)

3300'

16. NO. OF ACRES IN LEASE

2560

17. NO. OF ACRES ASSIGNED
TO THIS WELL

160

18. DISTANCE FROM PROPOSED LOCATION*

TO NEAREST WELL, DRILLING, COMPLETED,
OR APPLIED FOR, ON THIS LEASE, FT.

**

19. PROPOSED DEPTH

13,500'

20. ROTARY OR CABLE TOOLS

rotary

21. ELEVATIONS (Show whether DF, RT, GR, etc.)

GL - 3654'

22. APPROX. DATE WORK WILL START*

November 15, 1992

23.

PROPOSED CASING AND CEMENTING PROGRAM

SIZE OF HOLE	SIZE OF CASING	WEIGHT PER FOOT	SETTING DEPTH	QUANTITY OF CEMENT
17-1/2"	13-3/8"	54.5#	1600'	1350 sx - circ
12-1/4"	9-5/8"	43.5# Dve i 3500'	5500'	1700 sx - circ (tieback)
7-7/8"	5-1/2"	17,20 Dve i 9000'	13,500'	1800 sx - Est. TOC @ 4500'

Propose to drill to a TD of 13,500'.

All casing will be run & cmt'd in accordance w/ regulations and by approved methods.

Blowout prevention equipment will be applied as outlined in Additional Information.

See attached Multipoint Surface Plan & Additional Information for specific drlg operations.

This well is a proposed Morrow, Bone Spring, Delaware producer.

** Devonian Offset - 1797'
Morrow Offset - 6712'
Bone Spring Offset - 1420'

IN ABOVE SPACE DESCRIBE PROPOSED PROGRAM: If proposal is to deepen or plug back, give data on present productive zone and proposed new productive zone. If proposal is to drill or deepen directionally, give pertinent data on subsurface locations and measured and true vertical depths. Give blowout preventer program, if any.

24.

SIGNED

Paul Rouse

TITLE Operations Superintendent

DATE

10-2-92

(This space for Federal or State office use)

PERMIT NO.

APPROVAL DATE

APPROVED BY

TITLE

DATE

11-4-92

CONDITIONS OF APPROVAL, IF ANY:

APPROVAL SUBJECT TO

GENERAL REQUIREMENTS AND

SPECIAL STIPULATIONS

*See Instructions On Reverse Side

RECEIVED
NOV 05 1992
OCD ROSSS 00000

Submit to Appropriate
District Office
State Lease - 4 copies
Fee Lease - 3 copies

State of New Mexico
Energy, Minerals and Natural Resources Department

Form C-102
Revised 1-1-89

OIL CONSERVATION DIVISION

DISTRICT I

P.O. Box 1980, Hobbs, NM 88240

DISTRICT II

P.O. Drawer DD, Artesia, NM 88210

DISTRICT III

1000 Rio Brazos Rd., Aztec, NM 87410

P.O. Box 2088

Santa Fe, New Mexico 87504-2088

WELL LOCATION AND ACREAGE DEDICATION PLAT

All Distances must be from the outer boundaries of the section

Operator MARATHON OIL COMPANY		Lease LEA UNIT		Well No. 15
Unit Letter L	Section 12	Township 20 SOUTH	Range 34 EAST NMPM	County LEA

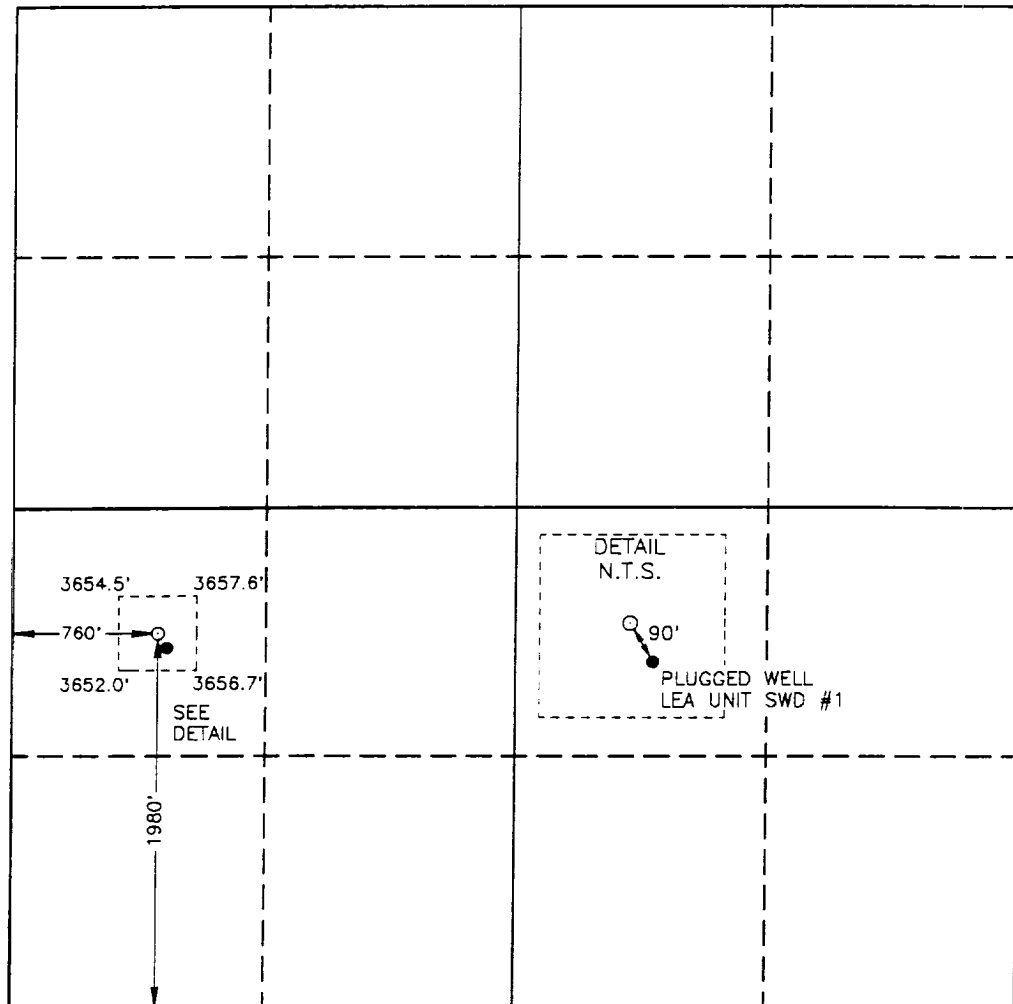
Actual Footage Location of Well:

1980 feet from the SOUTH line and		760 feet from the WEST line	
Ground Level Elev. 3654.5'	Producing Formation Morrow, B. Spring, Delaware	Pool Lea (Penn) (Bone Spring) (Delaware)	Dedicated Acreage: 1.60 Acres

- Outline the acreage dedicated to the subject well by colored pencil or hachure marks on the plat below.
- If more than one lease is dedicated to the well, outline each and identify the ownership thereof (both as to working interest and royalty).
- If more than one lease of different ownership is dedicated to the well, have the interest of all owners been consolidated by communitization, unitization, force-pooling, etc.?
☐ Yes ☐ No If answer is "yes" type of consolidation _____

If answer is "no" list of owners and tract descriptions which have actually been consolidated. (Use reverse side of this form necessary.)

No allowable will be assigned to the well unit all interests have been consolidated (by communitization, unitization, forced-pooling, otherwise) or until a non-standard unit, eliminating such interest, has been approved by the Division.



OPERATOR CERTIFICATION

I hereby certify the the information contained herein is true and complete to the best of my knowledge and belief.

Signature

Printed Name

C. T. Pearce

Position

Drilling Superintendent

Company

Marathon Oil Company

Date

SURVEYOR CERTIFICATION

I hereby certify that the well location shown on this plat was plotted from field notes of actual surveys made by me or under my supervision and that the same is true and correct to the best of my knowledge and belief.

Date Surveyed

SEPTEMBER 25, 1992

Signature & Seal of
Professional Surveyor

Certificate No. **JOHN W. WEST** 878

RONALD J. EIDSON 3239

GARY S. JONES 7977

92-1301-396

Submit to Appropriate
District Office
State Lease - 4 copies
Fee Lease - 3 copies

State of New Mexico
Energy, Minerals and Natural Resources Department

Form C-102
Revised 1-1-89

DISTRICT I

P.O. Box 1980, Hobbs, NM 88240

DISTRICT II

P.O. Drawer DD, Artesia, NM 88210

DISTRICT III

1000 Rio Brazos Rd., Aztec, NM 87410

OIL CONSERVATION DIVISION

P.O. Box 2088

Santa Fe, New Mexico 87504-2088

WELL LOCATION AND ACREAGE DEDICATION PLAT

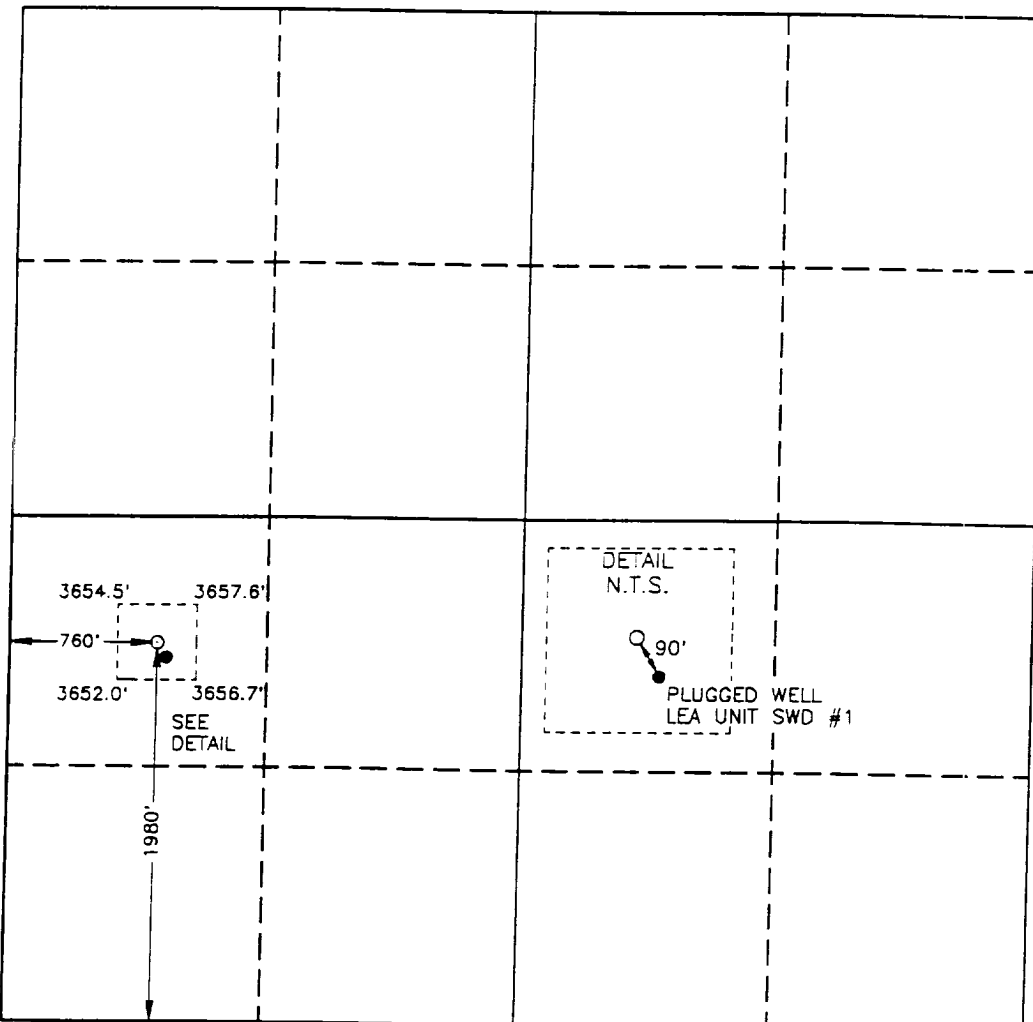
All Distances must be from the outer boundaries of the section

Operator MARATHON OIL COMPANY		Lease LEA UNIT		Well No. 15
Unit Letter L	Section 12	Township 20 SOUTH	Range 34 EAST	County LEA

Actual Footage Location of Well:

1980 feet from the SOUTH line and		760 feet from the WEST line	
Ground Level Elev. 3654.5'	Producing Formation Morrow, B. Spring, Delaware	Pool Lea (Penn) (Bone Spring) (Delaware)	Dedicated Acreage: 80 Acres

- Outline the acreage dedicated to the subject well by colored pencil or hachure marks on the plat below.
 - If more than one lease is dedicated to the well, outline each and identify the ownership thereof (both as to working interest and royalty).
 - If more than one lease of different ownership is dedicated to the well, have the interest of all owners been consolidated by communitization, unitization, force-pooling, etc.?
☐ Yes ☐ No If answer is "yes" type of consolidation _____
- If answer is "no" list of owners and tract descriptions which have actually been consolidated. (Use reverse side of this form necessary.) _____
- No allowable will be assigned to the well unit all interests have been consolidated (by communitization, unitization, forced-pooling, otherwise) or until a non-standard unit, eliminating such interest, has been approved by the Division.



OPERATOR CERTIFICATION

I hereby certify the the information contained herein is true and complete to the best of my knowledge and belief.

Signature
C. T. Pearce
Printed Name
C. T. Pearce
Position
Drilling Superintendent
Company
Marathon Oil Company
Date

SURVEYOR CERTIFICATION

I hereby certify that the well location shown on this plat was plotted from field notes of actual surveys made by me or under my supervision and that the same is true and correct to the best of my knowledge and belief.

Date Surveyed
SEPTEMBER 25, 1992

Signature & Seal of
Professional Surveyor

Samuel Jones
Certificate No. **JOHN W. WEST 878**
RONALD J. EIDSON 3239
GARY L. JONES 7977
92-11011395

Submit to Appropriate
District Office
State Lease - 4 copies
Fee Lease - 3 copies

State of New Mexico
Energy, Minerals and Natural Resources Department

Form C-102
Revised 1-1-89

OIL CONSERVATION DIVISION

P.O. Box 2088

Santa Fe, New Mexico 87504-2088

DISTRICT I

P.O. Box 1980, Hobbs, NM 88240

DISTRICT II

P.O. Drawer DD, Artesia, NM 88210

DISTRICT III

1000 Rio Brazos Rd., Aztec, NM 87410

WELL LOCATION AND ACREAGE DEDICATION PLAT

All Distances must be from the outer boundaries of the section

Operator MARATHON OIL COMPANY		Lease LEA UNIT		Well No. 15
Unit Letter L	Section 12	Township 20 SOUTH	Range 34 EAST NMPM	County LEA

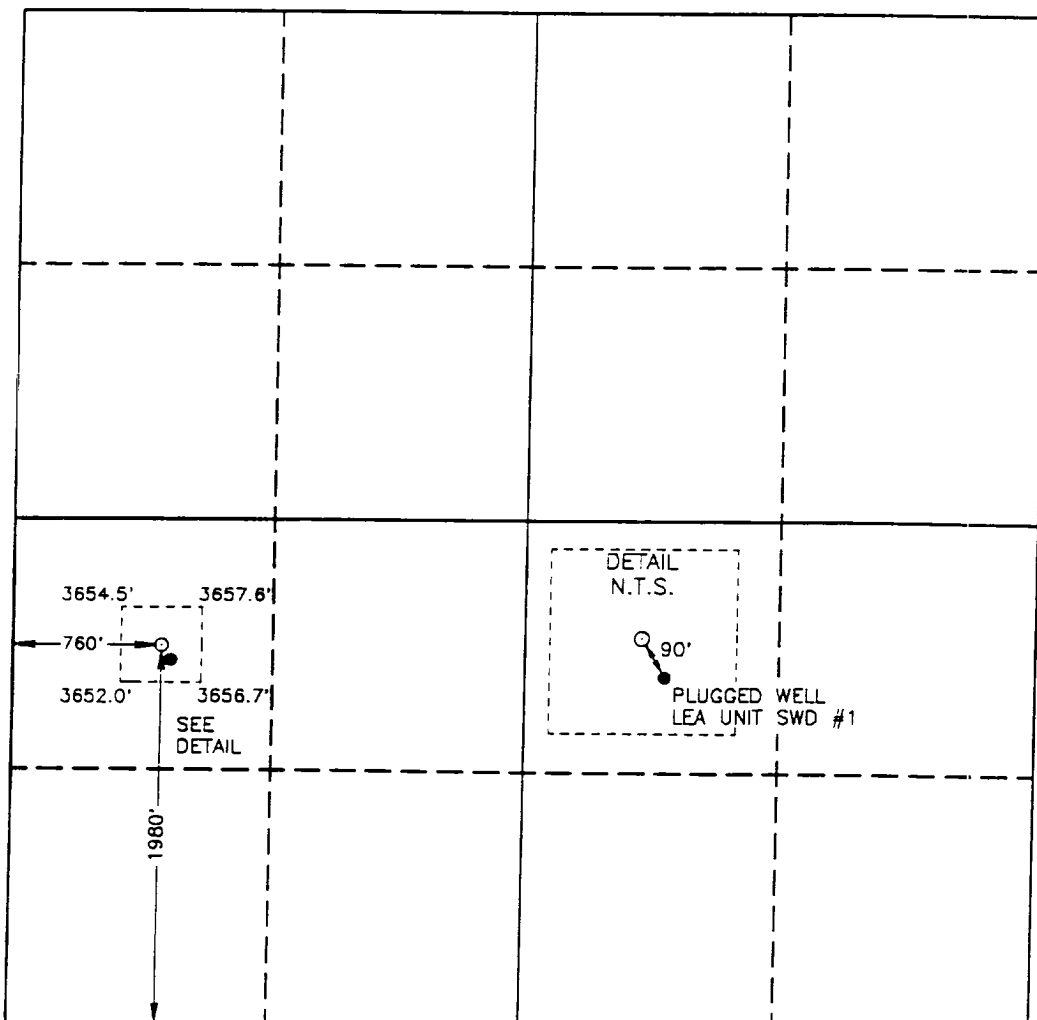
Actual Footage Location of Well:

1980 feet from the SOUTH line and		760 feet from the WEST line	
Ground Level Elev. 3654.5'	Producing Formation Morrow, B. Spring, Delaware	Pool Lea (Penn) (Bone Spring) (Delaware)	Dedicated Acreage: 40 Acres

- Outline the acreage dedicated to the subject well by colored pencil or hachure marks on the plat below.
- If more than one lease is dedicated to the well, outline each and identify the ownership thereof (both as to working interest and royalty).
- If more than one lease of different ownership is dedicated to the well, have the interest of all owners been consolidated by communitization, unitization, force-pooling, etc.?
☐ Yes ☐ No If answer is "yes" type of consolidation _____

If answer is "no" list of owners and tract descriptions which have actually been consolidated. (Use reverse side of this form necessary.)

No allowable will be assigned to the well unit all interests have been consolidated (by communitization, unitization, forced-pooling, otherwise) or until a non-standard unit, eliminating such interest, has been approved by the Division.



OPERATOR CERTIFICATION

I hereby certify the the information contained herein is true and complete to the best of my knowledge and belief.

Signature

Printed Name

C. T. Pearce

Position

Drilling Superintendent

Company

Marathon Oil Company

Date

SURVEYOR CERTIFICATION

I hereby certify that the well location shown on this plat was plotted from field notes of actual surveys made by me or under my supervision, and that the same is true and correct to the best of my knowledge and belief.

Date Surveyed

SEPTEMBER 25, 1992

Signature & Seal of Professional Surveyor

