

OIL CONSERVATION DIVISION

DISTRICT I
P.O. Box 1980, Hobbs, NM 88240

P.O. Box 2088
Santa Fe, New Mexico 87504-2088

DISTRICT II
P.O. Drawer DD, Artesia, NM 88210

DISTRICT III
1000 Rio Brazos Rd., Artec, NM 87410

WELL LOCATION AND ACREAGE DEDICATION PLAT

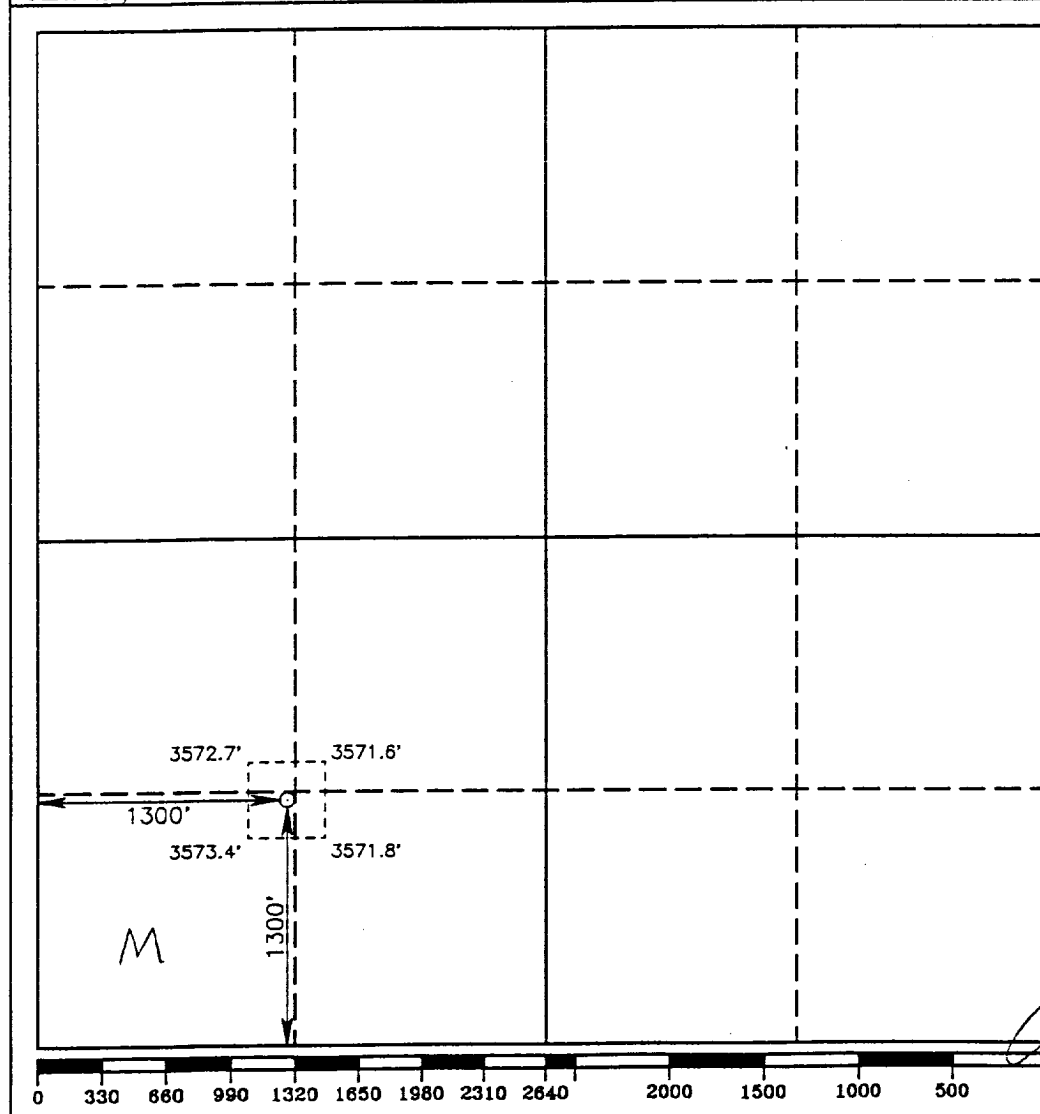
All Distances must be from the outer boundaries of the section

Operator WARRIOR, INC.			Lease FEDERAL "D"		Well No. 13
Unit Letter M	Section 26	Township 20 SOUTH	Range 36 EAST	County LEA	
Actual Footage Location of Well: 1300 feet from the SOUTH line and 1300 feet from the WEST line					
Ground Level Elev. 3571.1'	Producing Formation Queen		Pool Eumont Y-7R-Q	Dedicated Acreage: 40 Acres	

- Outline the acreage dedicated to the subject well by colored pencil or hachure marks on the plat below.
- If more than one lease is dedicated to the well, outline each and identify the ownership thereof (both as to working interest and royalty).
- If more than one lease of different ownership is dedicated to the well, have the interest of all owners been consolidated by communitization, unitization, force-pooling, etc.?
☐ Yes ☐ No If answer is "yes" type of consolidation _____

If answer is "no" list of owners and tract descriptions which have actually been consolidated. (Use reverse side of this form necessary.)

No allowable will be assigned to the well unit all interests have been consolidated (by communitization, unitization, forced-pooling, otherwise) or until a non-standard unit, eliminating such interest, has been approved by the Division.



OPERATOR CERTIFICATION

I hereby certify the information contained herein is true and complete to the best of my knowledge and belief.

Signature
Printed Name
Position
Company
Date

SURVEYOR CERTIFICATION

I hereby certify that the well location shown on this plat was plotted from field notes of actual surveys made by me or under my supervision, and that the same is true and correct to the best of my knowledge and belief.

Date Surveyed
Signature & Seal of Professional Surveyor

Certificate No. JOHN W. WEST 876
RONALD J. EDSON 3239
DAN GARY JONES 7977