

# OIL CONSERVATION DIVISION

P.O. Box 2088

Santa Fe, New Mexico 87504-2088

## DISTRICT 1

DISTRICT  
P.O. Box 1980, Hobbs, NM 88240

DISTRICT II

DISTRICT II  
P.O. Drawer DD, Artesia, NM 88210

### DISTRICT III

1000 Rio Brazos Rd., Aztec, NM 87410

## WELL LOCATION AND ACREAGE DEDICATION PLAT

All Distances must be from the outer boundaries of the section

Operator Concho Oil & Gas Corp.			Lease NEUHAUS "14" FEDERAL		Well No. 2
Unit Letter B	Section 14	Township 20 SOUTH	Range 35 EAST NMPM	County LEA	

Actual Footage Location of Well:

660 feet from the NORTH line and

1650

feet from the EAST line

Ground Level Elev.	Producing Formation
3662.1'	Bone Spring

Pool East Featherstone  
Wildcat

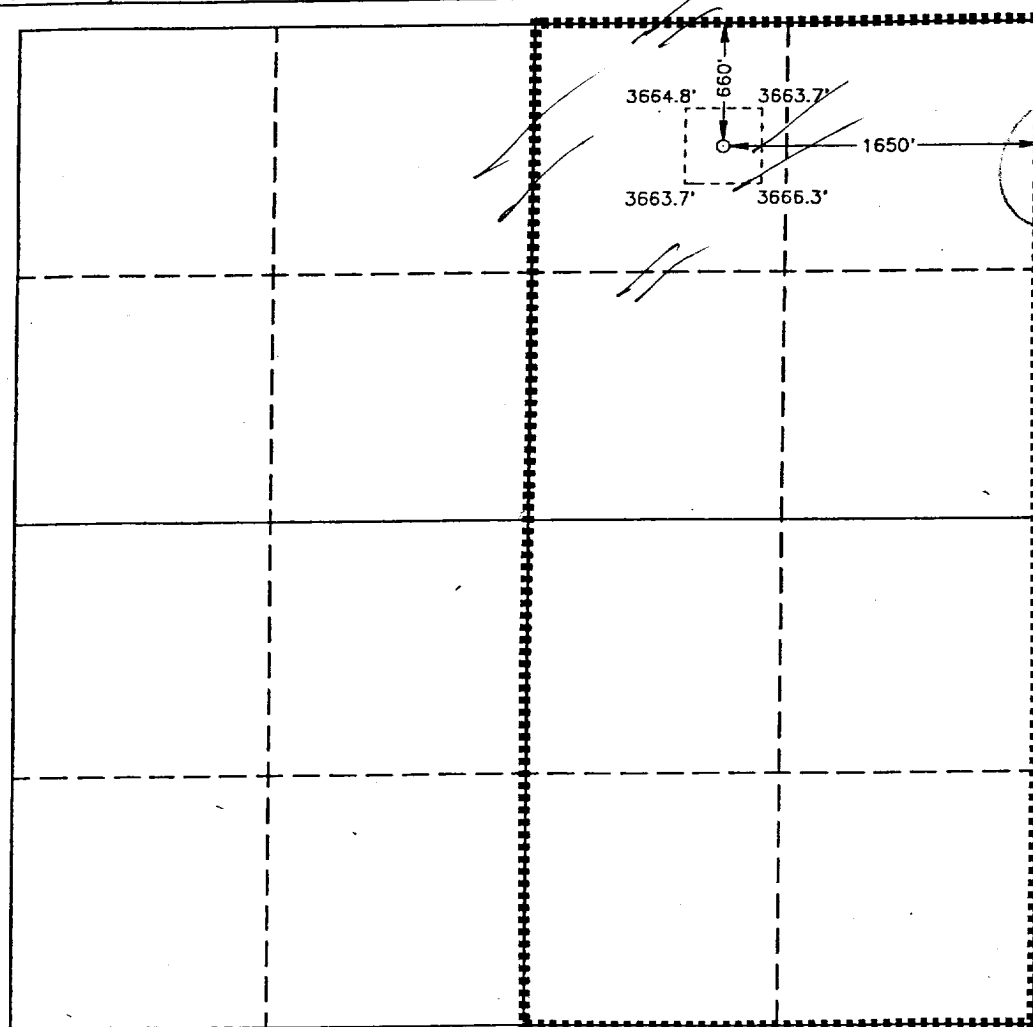
Dedicated Acreage:  
320 40 Acres

1. Outline the acreage dedicated to the subject well by colored pencil or hachure marks on the plat below. Pool Code # 2427
2. If more than one lease is dedicated to the well, outline each and identify the ownership thereof (both as to working interest and royalty).
3. If more than one lease of different ownership is dedicated to the well, have the interest of all owners been consolidated by communitization, unitization, force-pooling, etc.?

☐ Yes ☐ No If answer is "yes" type of consolidation

If answer is "no" list of owners and tract descriptions which have actually been consolidated. (Use reverse side of this form necessary.)

No allowable will be assigned to the well unit all interests have been consolidated (by communitization, unitization, forced-pooling, otherwise) or until a non-standard unit, eliminating such interest, has been approved by the Division.



### OPERATOR CERTIFICATION

I hereby certify the the information  
contained herein is true and complete to the  
best of my knowledge and belief

**Signature**

Terri Stathem

10111  
✓ Printed Name

Position Production Analyst

Concho Oil & Gas Corp.  
Company

Date 3/12/02

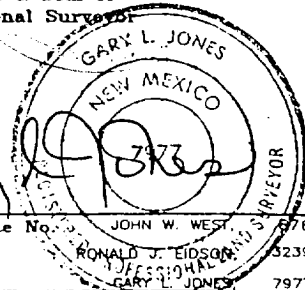
### SURVEYOR CERTIFICATION

I hereby certify that the well location shown on this plat was plotted from field notes of actual surveys made by me or under my supervision, and that the same is true and correct to the best of my knowledge and belief.

Date Surveyed \_\_\_\_\_

MARCH 24, 1993

Signature & Seal of  
Professional Surveyor



Certificate No. JOHN W. WEST, 5 870

93-11-0467