

UNITED STATES  
DEPARTMENT OF THE INTERIOR  
BUREAU OF LAND MANAGEMENT

APPLICATION FOR PERMIT TO DRILL, DEEPEN, OR PLUG BACK

1A. TYPE OF WORK

DRILL ☒

DEEPEN ☒

PLUG BACK ☐

B. TYPE OF WELL

OIL  
WELL ☒

GAS  
WELL ☐

OTHER ☐

SINGLE  
ZONE ☐

MULTIPLE  
ZONE ☐

2. NAME OF OPERATOR

Read & Stevens, Inc.

3a. Area Code & Phone No.  
505/622-3770

3. ADDRESS OF OPERATOR

P. O. Box 1518

Roswell, NM 88202

4. LOCATION OF WELL (Report location clearly and in accordance with any State requirements.)

At surface

330' FNL & 2310' FWL

At proposed prod. zone

Same

14. DISTANCE IN MILES AND DIRECTION FROM NEAREST TOWN OR POST OFFICE\*

33 miles southwest of Hobbs, NM

16. DISTANCE FROM PROPOSED\*  
LOCATION TO NEAREST  
PROPERTY OR LEASE LINE, FT.  
(Also to nearest drig. unit line, if any)

330'

16. NO. OF ACRES IN LEASE  
280

17. NO. OF ACRES ASSIGNED  
TO THIS WELL 40

18. DISTANCE FROM PROPOSED LOCATION\*  
TO NEAREST WELL, DRILLING, COMPLETED,  
OR APPLIED FOR, ON THIS LEASE, FT.

N/A

19. PROPOSED DEPTH  
6900'

20. ROTARY OR CABLE TOOLS  
Rotary

21. ELEVATIONS (Show whether DF, RT, GR, etc.)

3642' GL

22. APPROX. DATE WORK WILL START\*

February 15, 1993

23.

PROPOSED CASING AND CEMENTING PROGRAM

Secretary's Potash

HOLE SIZE	CASING SIZE	WEIGHT/FOOT	GRADE	THREAD TYPE	SETTING DEPTH	QUANTITY OF CEMENT
17 1/2"	13 3/8"	54.5#	J-55	STC	1600'	Circ 1200 sx*
11"	8 5/8"	32.0#	S-80	LTC	5000'	Circ 1100 sx*
7 7/8"	5 1/2"	15.5#	J-55	STC	6900'	tie w/350 sx"H"

Mud Program:

0' - 1600': Fresh water native mud:

Mud Wt.

8.4 ppg

Vis.

32

W/L Control

No W/L control

1600' - 5000': Brine mud:

10. ppg

28-32

No W/L control

5000' - 6900': Cut brine mud w/starch:

8.8 ppg

32-40

W/L control 15cc

1600' - 6900': Gel & lost circulation material will be added as needed.

BOP Program:

A 10" 3000 psi wp Shaffer Series 900 BOP will installed on the 13 3/8" casing. Casing and BOP will be tested before drilling out with 11". BOP will used as a 2000 psi wp system and will be tested daily.

\* 13 3/8": Circulate 1000 sx lite, tail in with 200 sx C w/2% CaCl

\* 8 5/8": Cement with DV tool in two stages starting at 3800':

1st stage: Lead 200 sx lite, tail in w/200 sx "C".

2nd stage: Lead 500 sx lite cement, tail w/200 sx neat. Cement to surface.

IN ABOVE SPACE DESCRIBE PROPOSED PROGRAM: If proposal is to deepen or plug back, give data on present productive zone and proposed new productive zone. If proposal is to drill or deepen directionally, give pertinent data on subsurface locations and measured and true vertical depths. Give blowout preventer program, if any.

24.

Agent for:

Read & Stevens, Inc.

Dec. 17, 1992

SIGNED

TITLE

DATE

(This space for Federal or State office use)

PERMIT NO.

APPROVAL DATE

APPROVED BY

TITLE

DATE

CONDITIONS OF APPROVAL, IF ANY:

APPROVAL SUBJECT TO  
GENERAL REQUIREMENTS AND  
SPECIAL STIPULATIONS  
ATTACHED

\*See Instructions On Reverse Side

This is U.S.C. Section 1001, makes it a crime for any person knowingly and willfully to make to any department or agency of the

# OIL CONSERVATION DIVISION

P.O. Box 2088  
Santa Fe, New Mexico 87504-2088

## DISTRICT I

P.O. Box 1980, Hobbs, NM 88240

## DISTRICT II

P.O. Drawer DD, Artesia, NM 88210

## DISTRICT III

1000 Rio Brazos Rd., Aztec, NM 87410

## WELL LOCATION AND ACREAGE DEDICATION PLAT

All Distances must be from the outer boundaries of the section

Operator <b>Read &amp; Stevens, Inc.</b>			Lease <b>Riley Federal</b>		Well No. <b>1</b>
Unit Letter <b>C</b>	Section <b>15</b>	Township <b>20 South</b>	Range <b>34 East</b>	County <b>Lea</b>	

Actual Footage Location of Well:

330 feet from the North line and		2310 feet from the West line	
Ground level Elev. <b>3642</b>	Producing Formation <b>Delaware</b>	Pool <b>Quail Ridge Delaware</b>	Dedicated Acreage: <b>40 Acres</b>

1. Outline the acreage dedicated to the subject well by colored pencil or hatchure marks on the plat below.

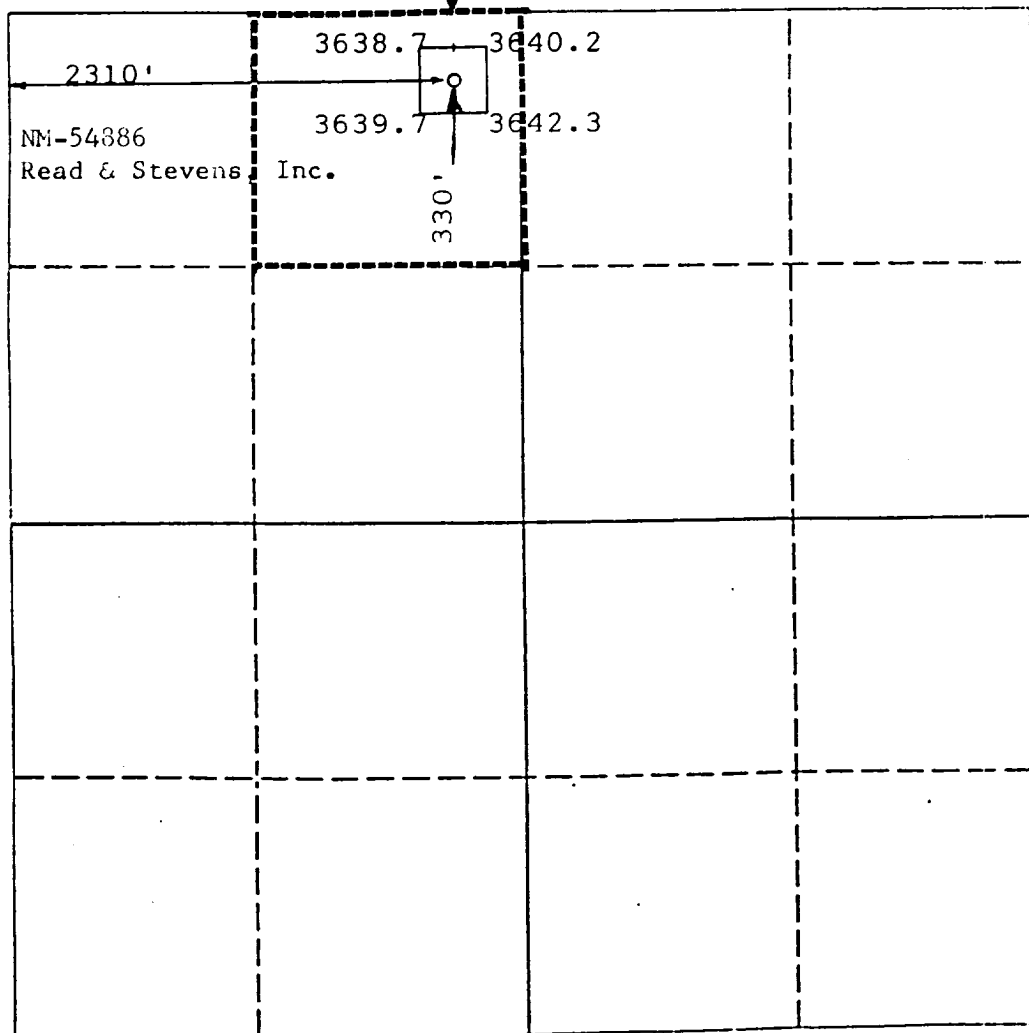
2. If more than one lease is dedicated to the well, outline each and identify the ownership thereof (both as to working interest and royalty).

3. If more than one lease of different ownership is dedicated to the well, have the interest of all owners been consolidated by communitization, unitization, force-pooling, etc.?

☐ Yes ☐ No If answer is "yes" type of consolidation

If answer is "no" list the owners and tract descriptions which have actually been consolidated. (Use reverse side of this form if necessary.)

No allowable will be assigned to the well until all interests have been consolidated (by communitization, unitization, forced-pooling, or otherwise) or until a non-standard unit, eliminating such interest, has been approved by the Division.



### OPERATOR CERTIFICATION

I hereby certify that the information contained herein is true and complete to the best of my knowledge and belief.

Signature

Printed Name

George R. Smith

Position

Agent for:

Company

Read & Stevens, Inc.

Date

December 17, 1992

### SURVEYOR CERTIFICATION

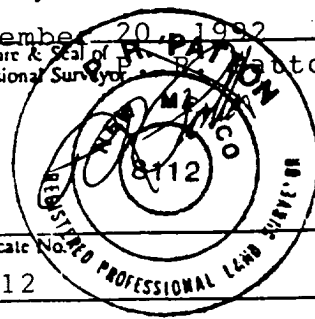
I hereby certify that the well location shown on this plat was plotted from field notes of actual surveys made by me or under my supervision, and that the same is true and correct to the best of my knowledge and belief.

Date Surveyed

November 20, 1992  
Signature & Seal of Professional Surveyor

Certificate No.

8112



0 330 660 990 1320 1650 1980 2310 2640 2000 1500 1000 500 0

APPLICATION FOR DRILLING

READ & STEVENS. INC.  
Riley Federal, Well No. 1  
330' FNL & 2310' FWL, Sec. 15-T20S-R34E  
Lea County, New Mexico  
Lease No.: NM-54886  
(Development Well)

In conjunction with Form 3160-3, Application for Permit to Drill subject well, Read & Stevens, Inc. submits the following items of pertinent information in accordance with BLM requirements:

1. The geologic surface formation is recent Permian with quaternary alluvium and other surficial deposits.

2. The estimated tops of geologic markers are as follows:

Rustler	1650'	Queen	3770'
Top of Salt	1870'	Seven Rivers	3950'
Base of Salt	3250'	Delaware	5670'
Yates	3500'	T.D.	6900'

3. The estimated depths at which water, oil or gas formations are anticipated to be encountered:

Water: Surface water in the Triassic between 80' - 230'.

Oil: Possible in the Delaware below 5670'

Gas: None expected.

4. Proposed Casing Program: See Form 3160-3.

5. Proposed Control Equipment: See Form 3160-3 and Exhibit "E".

6. Mud Program: See Form 3160-3.

7. Auxiliary Equipment: Blowout Preventer, gas detector, Kelly cock, pit level monitor, flow sensors and stabbing valve.

8. Testing, Logging, and Coring Program:

Drill Stem Tests: None unless warranted.

Logging: T.D. to surface casing:

G/R, CNL-FDC, DLL, MLL

Coring: None planned.

9. No abnormal pressures or temperatures are anticipated. In the event abnormal pressures are encountered the proposed mud program will be modified to increase the mud weight. Estimated BHP = 3000 psi with temperature of 110 degrees.
10. H<sub>2</sub>S: None expected. None in previously drilled wells.
11. Anticipated starting date: February 15, 1993.  
Anticipated completion of drilling operations: Approx. 3 weeks.



KEN REYNOLDS—PRESIDENT  
ARNIE NEWKIRK—VICE-PRESIDENT

DRILLING CO., INC. — OIL WELL DRILLING CONTRACTORS

P. O. BOX 149B ROBWELL, NEW MEXICO 88202-149B  
505/623-5070 505/746-2719  
ROBWELL, NM ARTESIA, NM

## RIG #3

### BLOWOUT PREVENTOR ARRANGEMENT

2M SYSTEM

10" SHAFFER TYPE "E", 3000 psi WP

80 GALLON, 4 STATION KOOMEY ACCUMULATOR

3000 psi WP CHOKE MANIFOLD

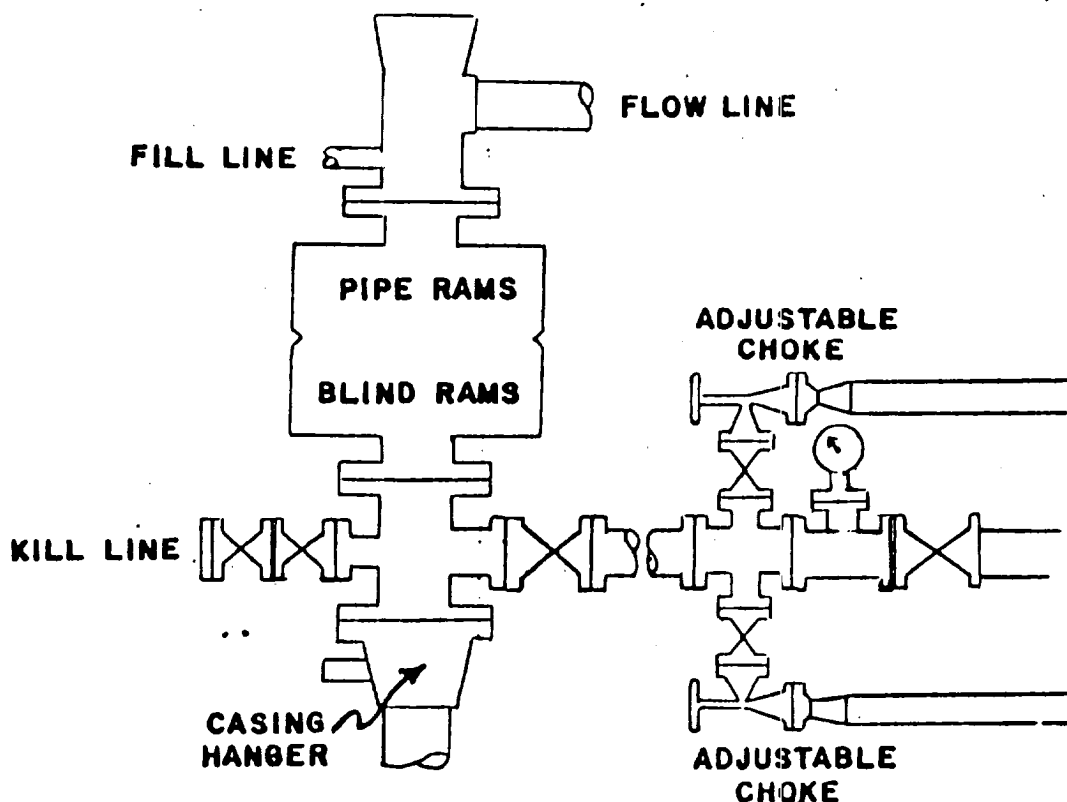


EXHIBIT "E"  
READ & STEVENS, INC.  
Riley Federal, Well No. 1  
BOP Specifications