

Submit to Appropriate  
District Office  
State Lease - 6 copies  
Fee Lease - 5 copies

State of New Mexico  
Energy, Minerals and Natural Resources Department

Form C-101  
Revised 1-1-89

OIL CONSERVATION DIVISION

DISTRICT I  
P.O. Box 1980, Hobbs, NM 88240

DISTRICT II  
P.O. Drawer DD, Artesia, NM 88210

DISTRICT III  
1000 Rio Brazos Rd., Aztec, NM 87410

P.O. Box 2088  
Santa Fe, New Mexico 87504-2088

API NO. (assigned by OCD on New Wells)

30-025-32163

5. Indicate Type of Lease

STATE ☐

FEE ☒

6. State Oil & Gas Lease No.

APPLICATION FOR PERMIT TO DRILL, DEEPEN, OR PLUG BACK

1a. Type of Work:

DRILL ☒

RE-ENTER ☐

DEEPEN ☐

PLUG BACK ☐

b. Type of Well:

OIL  
WELL ☒

GAS  
WELL ☐

OTHER ☐

SINGLE  
ZONE ☒

MULTIPLE  
ZONE ☐

7. Lease Name or Unit Agreement Name

Francis Evelyn

2. Name of Operator

Drum Energy Corporation

8. Well No.

1

3. Address of Operator

P.O. Box 2134, Midland, TX 79702

9. Pool name or Wildcat

House Blinebry

4. Well Location

Unit Letter N : 990 Feet From The South Line and 1740 Feet From The West Line

Section 35 Township 19S Range 38E NMPM Lea County

10. Proposed Depth

6200 feet

11. Formation

Blinebry

12. Rotary or C.T.

Rotary

13. Elevations (Show whether DF, RT, GR, etc.)

3579.7-ground

14. Kind & Status Plug Bond

\* Cash

15. Drilling Contractor

to be determined

16. Approx. Date Work will start

10-15-93

17. PROPOSED CASING AND CEMENT PROGRAM

SIZE OF HOLE	SIZE OF CASING	WEIGHT PER FOOT	SETTING DEPTH	SACKS OF CEMENT	EST. TOP
15	12 3/4	33	30	RediMix	Surface
12 1/4	8 5/8	24	1650	800	Surface
7 7/8	5 1/2	17	6200	1600	Surface

8 5/8 casing: Use 8 5/8" guide shoe and 8 5/8" insert float, class C cement, circulate to surface

5 1/2 casing: Use 5 1/2" guide shoe and 5 1/2" float collar with automatic fill, DV tool. Cement 1 st stage with 50/50 Pozmix "C", 2 % gel, 18% salt; second stage with Halliburton Lite with 15 lbs. salt, 5 lbs. Gilsonite, and 1/4 lb. Flocele per sack, tail with class "C" with 4 lbs. salt per sack, circulate to surface

Mud: Drill surface hole with fresh water gel. Drill production hole with saturated salt (10.1 lb./gal.), water loss of 10 cc/30 min., viscosity of 34 to 36 seconds.

Completion: Perforate in top 100' of Blinebry, acid treat. Fracture treat if necessary.

BOP Program: A 10 3/4" 2000psi Rotating Head will be used while drilling surface hole. Before drilling out from under the surface the well will be equipped with a 3000 psi 10" 900 Series double ram hydraulic BOP system.

\* 7,500 cash bond to be tendered prior to spudding well.

IN ABOVE SPACE DESCRIBE PROPOSED PROGRAM: IF PROPOSAL IS TO DEEPEN OR PLUG BACK, GIVE DATA ON PRESENT PRODUCTIVE ZONE AND PROPOSED NEW PRODUCTIVE ZONE. GIVE BLOWOUT PREVENTER PROGRAM, IF ANY.

I hereby certify that the information above is true and complete to the best of my knowledge and belief.

SIGNATURE David R. Mussett TITLE President DATE 8-4-93

TYPE OR PRINT NAME David R. Mussett TELEPHONE NO. (915) 684-9081

(This space for State Use)

Orig. Signed by  
Paul Kauts  
Geologist

APPROVED BY \_\_\_\_\_ TITLE \_\_\_\_\_ DATE \_\_\_\_\_

CONDITIONS OF APPROVAL, IF ANY:

Permit Expires 6 Months From Approval  
Date Unless Drilling Underway.

AUG 05 1993

0 330 660 990 1320 1650 1980 2310 2640

2000 1500 1000 500 0

46-8-8

RECEIVED

1949

STUBBS  
OFFICE

Submit to Appropriate  
District Office  
State Lease - 4 copies  
Fee Lease - 3 copies

State of New Mexico  
Energy, Minerals and Natural Resources Department

Form C-102  
Revised 1-1-89

OIL CONSERVATION DIVISION

P.O. Box 2088  
Santa Fe, New Mexico 87504-2088

DISTRICT I

P.O. Box 1980, Hobbs, NM 88240

DISTRICT II

P.O. Drawer DD, Artesia, NM 88210

DISTRICT III

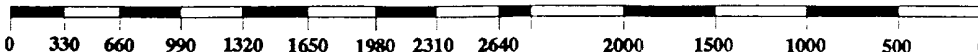
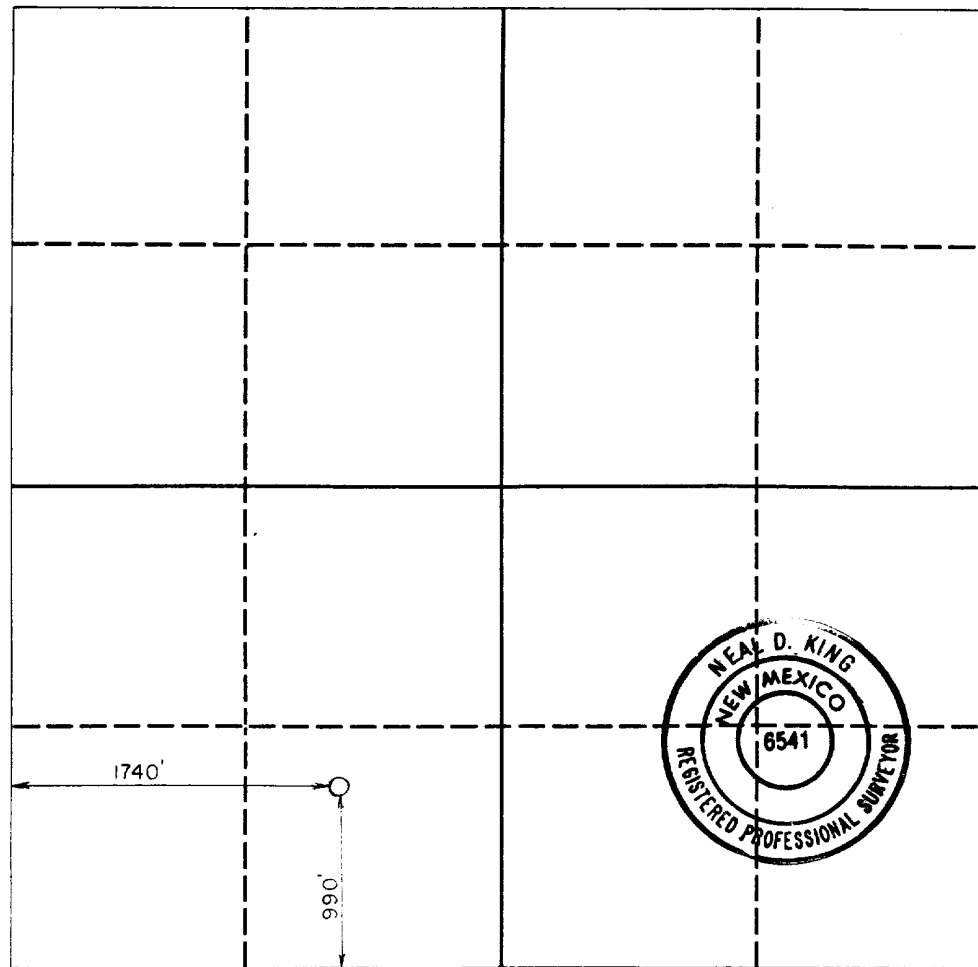
1000 Rio Brazos Rd., Aztec, NM 87410

WELL LOCATION AND ACREAGE DEDICATION PLAT

All Distances must be from the outer boundaries of the section

Operator Drum Energy Corporation			Lease Francis Evelyn		Well No. 1
Unit Letter N	Section 35	Township 19 South	Range 38 East	County NMPM Lea	
Actual Footage Location of Well: 990.0 feet from the South line and 1740.0 feet from the West line					
Ground level Elev. 3579.7		Producing Formation Blinebry		Pool House	
					Dedicated Acreage: 40 Acres

1. Outline the acreage dedicated to the subject well by colored pencil or hatchure marks on the plat below.
2. If more than one lease is dedicated to the well, outline each and identify the ownership thereof (both as to working interest and royalty).
3. If more than one lease of different ownership is dedicated to the well, have the interest of all owners been consolidated by communitization, unitization, force-pooling, etc.?  
☐ Yes ☐ No If answer is "yes" type of consolidation \_\_\_\_\_  
If answer is "no" list the owners and tract descriptions which have actually been consolidated. (Use reverse side of this form if necessary.) \_\_\_\_\_  
No allowable will be assigned to the well until all interests have been consolidated (by communitization, unitization, forced-pooling, or otherwise) or until a non-standard unit, eliminating such interest, has been approved by the Division.



OPERATOR CERTIFICATION

I hereby certify that the information contained herein is true and complete to the best of my knowledge and belief.

Signature  
Printed Name  
David R. Mussett  
Position  
President  
Company  
Drum Energy Corp.  
Date  
8-03-93

SURVEYOR CERTIFICATION

I hereby certify that the well location shown on this plat was plotted from field notes of actual surveys made by me or under my supervision, and that the same is true and correct to the best of my knowledge and belief.

Date Surveyed  
August 3, 1993  
Signature & Seal of  
Professional Surveyor  
Certificate No.  
6541

RECEIVED

[illegible]

SUBJECT  
 PAGE

1840-1849 1850-1859 1860-1869 1870-1879 1880-1889 1890-1899 1900-1909 1910-1919 1920-1929 1930-1939 1940-1949 1950-1959 1960-1969 1970-1979 1980-1989 1990-1999 2000-2009 2010-2019 2020-2029 2030-2039 2040-2049 2050-2059 2060-2069 2070-2079 2080-2089 2090-2099 2100-2109 2110-2119 2120-2129 2130-2139 2140-2149 2150-2159 2160-2169 2170-2179 2180-2189 2190-2199 2200-2209 2210-2219 2220-2229 2230-2239 2240-2249 2250-2259 2260-2269 2270-2279 2280-2289 2290-2299 2300-2309 2310-2319 2320-2329 2330-2339 2340-2349 2350-2359 2360-2369 2370-2379 2380-2389 2390-2399 2400-2409 2410-2419 2420-2429 2430-2439 2440-2449 2450-2459 2460-2469 2470-2479 2480-2489 2490-2499 2500-2509 2510-2519 2520-2529 2530-2539 2540-2549 2550-2559 2560-2569 2570-2579 2580-2589 2590-2599 2600-2609 2610-2619 2620-2629 2630-2639 2640-2649 2650-2659 2660-2669 2670-2679 2680-2689 2690-2699 2700-2709 2710-2719 2720-2729 2730-2739 2740-2749 2750-2759 2760-2769 2770-2779 2780-2789 2790-2799 2800-2809 2810-2819 2820-2829 2830-2839 2840-2849 2850-2859 2860-2869 2870-2879 2880-2889 2890-2899 2900-2909 2910-2919 2920-2929 2930-2939 2940-2949 2950-2959 2960-2969 2970-2979 2980-2989 2990-2999 3000-3009 3010-3019 3020-3029 3030-3039 3040-3049 3050-3059 3060-3069 3070-3079 3080-3089 3090-3099 3100-3109 3110-3119 3120-3129 3130-3139 3140-3149 3150-3159 3160-3169 3170-3179 3180-3189 3190-3199 3200-3209 3210-3219 3220-3229 3230-3239 3240-3249 3250-3259 3260-3269 3270-3279 3280-3289 3290-3299 3300-3309 3310-3319 3320-3329 3330-3339 3340-3349 3350-3359 3360-3369 3370-3379 3380-3389 3390-3399 3400-3409 3410-3419 3420-3429 3430-3439 3440-3449 3450-3459 3460-3469 3470-3479 3480-3489 3490-3499 3500-3509 3510-3519 3520-3529 3530-3539 3540-3549 3550-3559 3560-3569 3570-3579 3580-3589 3590-3599 3600-3609 3610-3619 3620-3629 3630-3639 3640-3649 3650-3659 3660-3669 3670-3679 3680-3689 3690-3699 3700-3709 3710-3719 3720-3729 3730-3739 3740-3749 3750-3759 3760-3769 3770-3779 3780-3789 3790-3799 3800-3809 3810-3819 3820-3829 3830-3839 3840-3849 3850-3859 3860-3869 3870-3879 3880-3889 3890-3899 3900-3909 3910-3919 3920-3929 3930-3939 3940-3949 3950-3959 3960-3969 3970-3979 3980-3989 3990-3999 4000-4009 4010-4019 4020-4029 4030-4039 4040-4049 4050-4059 4060-4069 4070-4079 4080-4089 4090-4099 4100-4109 4110-4119 4120-4129 4130-4139 4140-4149 4150-4159 4160-4169 4170-4179 4180-4189 4190-4199 4200-4209 4210-4219 4220-4229 4230-4239 4240-4249 4250-4259 4260-4269 4270-4279 4280-4289 4290-4299 4300-4309 4310-4319 4320-4329 4330-4339 4340-4349 4350-4359 4360-4369 4370-4379 4380-4389 4390-4399 4400-4409 4410-4419 4420-4429 4430-4439 4440-4449 4450-4459 4460-4469 4470-4479 4480-4489 4490-4499 4500-4509 4510-4519 4520-4529 4530-4539 4540-4549 4550-4559 4560-4569 4570-4579 4580-4589 4590-4599 4600-4609 4610-4619 4620-4629 4630-4639 4640-4649 4650-4659 4660-4669 4670-4679 4680-4689 4690-4699 4700-4709 4710-4719 4720-4729 4730-4739 4740-4749 4750-4759 4760-4769 4770-4779 4780-4789 4790-4799 4800-4809 4810-4819 4820-4829 4830-4839 4840-4849 4850-4859 4860-4869 4870-4879 4880-4889 4890-4899 4900-4909 4910-4919 4920-4929 4930-4939 4940-4949 4950-4959 4960-4969 4970-4979 4980-4989 4990-4999 5000-5009 5010-5019 5020-5029 5030-5039 5040-5049 5050-5059 5060-5069 5070-5079 5080-5089 5090-5099 5100-5109 5110-5119 5120-5129 5130-5139 5140-5149 5150-5159 5160-5169 5170-5179 5180-5189 5190-5199 5200-5209 5210-5219 5220-5229 5230-5239 5240-5249 5250-5259 5260-5269 5270-5279 5280-5289 5290-5299 5300-5309 5310-5319 5320-5329 5330-5339 5340-5349 5350-5359 5360-5369 5370-5379 5380-5389 5390-5399 5400-5409 5410-5419 5420-5429 5430-5439 5440-5449 5450-5459 5460-5469 5470-5479 5480-5489 5490-5499 5500-5509 5510-5519 5520-5529 5530-5539 5540-5549 5550-5559 5560-5569 5570-5579 5580-5589 5590-5599 5600-5609 5610-5619 5620-5629 5630-5639 5640-5649 5650-5659 5660-5669 5670-5679 5680-5689 5690-5699 5700-5709 5710-5719 5720-5729 5730-5739 5740-5749 5750-5759 5760-5769 5770-5779 5780-5789 5790-5799 5800-5809 5810-5819 5820-5829 5830-5839 5840-5849 5850-5859 5860-5869 5870-5879 5880-5889 5890-5899 5900-5909 5910-5919 5920-5929 5930