

District I
PO Box 1980, Hobbs, NM 88241-1980
District II
PO Drawer DD, Artesia, NM 88211-0719
District III
1000 Rio Brazos Rd., Aztec, NM 87410
District IV
PO Box 2088, Santa Fe, NM 87504-2088

State of New Mexico
Energy, Minerals & Natural Resources Department

OIL CONSERVATION DIVISION
PO Box 2088
Santa Fe, NM 87504-2088

Form C-101
Revised February 10, 1994
Instructions on back
Submit to Appropriate District Office
State Lease - 6 Copies
Fee Lease - 5 Copies

☐ AMENDED REPORT

APPLICATION FOR PERMIT TO DRILL, RE-ENTER, DEEPEN, PLUGBACK, OR ADD A ZONE

Operator Name and Address: ARMSTRONG ENERGY CORPORATION P.O. Box 1973 Roswell, New Mexico 88202-1973		OGED Number 001092
Property Code 001578	Property Name Mobil Lea State	API Number 30-025-32465
		Well No. 5

7 Surface Location

UL or lot no.	Section	Township	Range	Lot Idn	Feet from the	North/South line	Feet from the	East/West line	County
E	2	20S	34E		2440	North	870	West	Lea

8 Proposed Bottom Hole Location If Different From Surface

UL or lot no.	Section	Township	Range	Lot Idn	Feet from the	North/South line	Feet from the	East/West line	County
Proposed Pool 1 Lea Delaware, Northeast 37584					Proposed Pool 2				

Work Type Code New	Well Type Code 0	Cable/Rotary Rotary	Lease Type Code S	Grossed Level Elevation 3679'
Multiple No	Proposed Depth 6300'	Formation Delaware	Contractor LaRue & Muncy	Spud Date Est. 03-30-94

21 Proposed Casing and Cement Program

Hole Size	Casing Size	Casing weight/foot	Setting Depth	Seals of Cement	Estimated TOC
12 1/4"	8 5/8"	32#	1730' to top ANHY	800	Circ.
7 7/8"	5 1/2"	15.5#	6300'	1200	Circ.
				DV tool @ 5000'	

Describe the proposed program. If this application is to DEEPEN or PLUG BACK give the data on the present productive zone and proposed new productive zone. Describe the blowout prevention program, if any. Use additional sheets if necessary.

Propose to drill the Mobil Lea State #5 well to test the Delaware formation. Blowout prevention program information is attached.

*Included with this application is Order No. R-10077 granting approval for this unorthodox location.

I hereby certify that the information given above is true and complete to the best of my knowledge and belief.

Signature:

Printed name:

Thomas K. Scroggin

Title: Operations Supervisor

Date:

03-18-94

Phone:

623-8726

OIL CONSERVATION DIVISION

Approved by: ORIGINAL SIGNED BY JERRY SEXTON
DISTRICT I SUPERVISOR

Title:

Approval Date: MAR 11 1994

Expiration Date:

Conditions of Approval:

Attached ☐

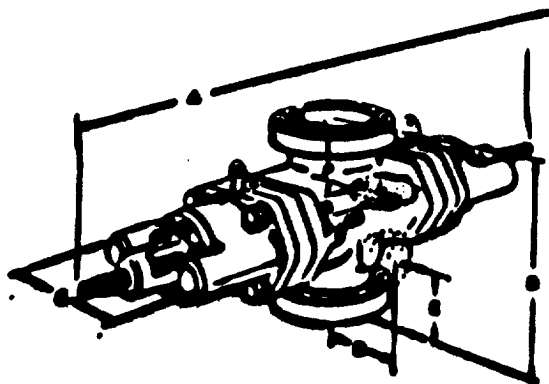
C-101 Instructions

Measurements and dimensions are to be in feet/inches. Well locations will refer to the New Mexico Principal Meridian.

IF THIS IS AN AMENDED REPORT CHECK THE BOX LABELED
"AMENDED REPORT" AT THE TOP OF THIS DOCUMENT.

- | | |
|--|--|
| <p>1 Operator's OGRID number. If you do not have one it will be assigned and filled in by the District office.</p> <p>2 Operator's name and address</p> <p>3 API number of this well. If this is a new drill the OCD will assign the number and fill this in.</p> <p>4 Property code. If this is a new property the OCD will assign the number and fill it in.</p> <p>5 Property name that used to be called 'well name'</p> <p>6 The number of this well on the property.</p> <p>7 The surveyed location of this well New Mexico Principal Meridian NOTE: If the United States government survey designates a Lot Number for this location use that number in the 'UL or lot no.' box. Otherwise use the OCD Unit Letter.</p> <p>8 The proposed bottom hole location of this well at TD</p> <p>9 and 10 The proposed pool(s) to which this well is being drilled.</p> <p>11 Work type code from the following table:
 N New well
 E Re-entry
 D Drill deeper
 P Plugback
 A Add a zone</p> <p>12 Well type code from the following table:
 O Single oil completion
 G Single gas completion
 M Multiple completion
 I Injection well
 S SWD well
 W Water supply well
 C Carbon dioxide well</p> <p>13 Cable or rotary drilling code
 C Propose to cable tool drill
 R Propose to rotary drill</p> <p>14 Lease type code from the following table:
 F Federal
 S State
 P Private
 N Navajo
 J Jicarilla
 U Ute
 I Other Indian tribe</p> <p>15 Ground level elevation above sea level</p> <p>16 Intend to multiple complete? Yes or No</p> <p>17 Proposed total depth of this well</p> | <p>18 Geologic formation at TD</p> <p>19 Name of the intended drilling company if known.</p> <p>20 Anticipated spud date.</p> <p>21 Proposed hole size ID inches, proposed casing OD inches, casing weight in pounds per foot, setting depth of the casing or depth and top of liner, proposed cementing volume, and estimated top of cement</p> <p>22 Brief description of the proposed drilling program and SGP program. Attach additional sheets if necessary.</p> <p>23 The signature, printed name, and title of the person authorized to make this report. The date this report was signed and the telephone number to call for questions about this report.</p> |
|--|--|

U BLOWOUT PREVENTER ENGINEERING DATA



Single Open Face Flanged U Blowout Preventer

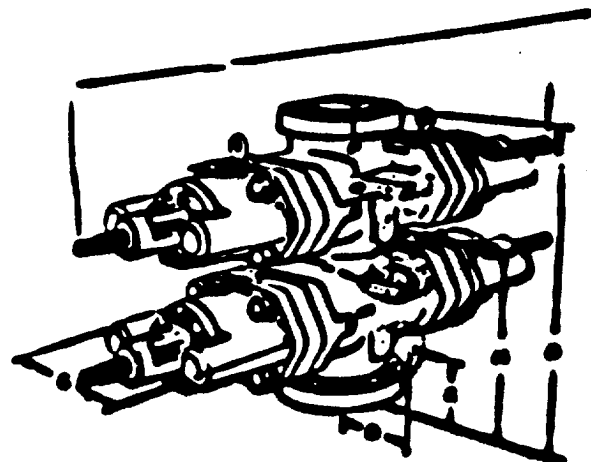
Side Outlets to 4" size (7-1/16" on 26-3/4" preventers) can be provided beneath each set of rams, on either or both sides of U preventers. Side outlet flanges are open face and have the same pressure rating as the vertical run flanges. Valve removal preparations can be provided. To obtain a quotation, the number and size of outlets should be specified.

Flanges conform to API Standard 6A. Type 6BX flanges are standard for 10,000 psi, 15,000 psi, and 20,000 psi working pressures and for 5000 psi working pressures for 13-5/8" and larger bore preventers.

Although most preventers have open face flanges or Cameron clamp hubs, preventers with stubbed flanges can be furnished.

Sizes and Dimensions are in inches. The over-all length "A" given in the tables does not include the optional wedgelocks. No spacers between rams are included in the table of dimensions of double ram models. Preventers with spacers to clear tool joints can be obtained on special order. For information on preventers with spacers, or sizes not listed, consult your Cameron representative.

Hydraulic Control Connections to operate rams and bonnets are 1" NPT. There are two connections for each set of rams. Hydraulic ram lock connections are 1/2" NPT.



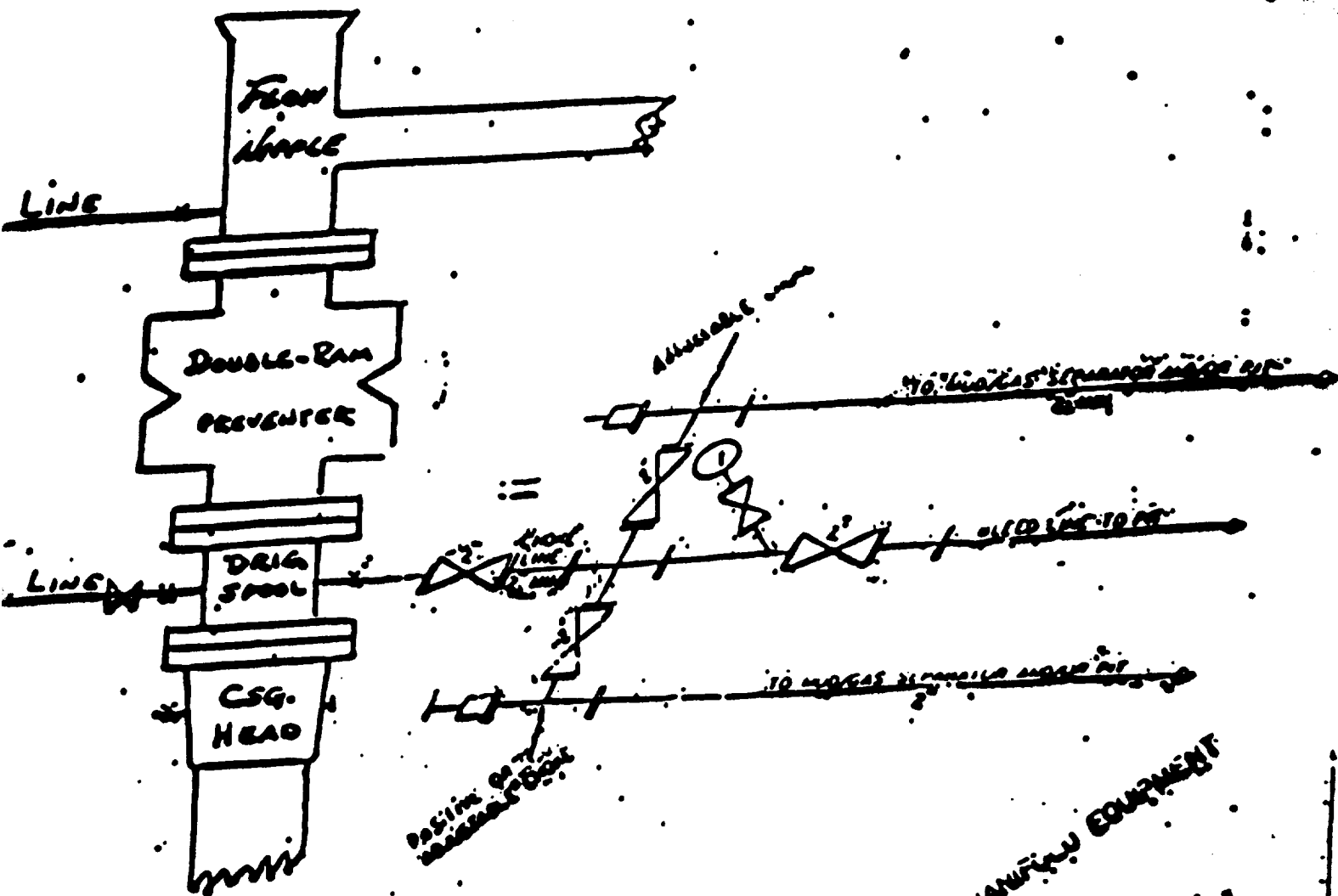
Double Open Face Flanged U Blowout Preventer

Engineering Data Designations. See Charts on Following Page

- A-1 Over-all length, bonnets closed, locking screws locked
- A-2 Over-all length, ram change, bonnets opened, locking screws unlocked
- B-1 Over-all height flanged
- B-2 As above, with Cameron clamp hubs
- C Over-all width without side outlets (max. width)
- D Centerline of preventer to outlet flange or hub face. Distance is variable.
- E-1 Centerline of side outlet (outlet below lower rams in double model) to bottom flange face
- E-2 As above, to bottom hub face
- F-1 Top of upper ram to top flange face
- F-2 As above, to top hub face
- G Ram height
- H-1 Centerline of side outlet between rams to bottom flange face
- H-2 As above, to bottom hub face
- J Top of lower ram to bottom of upper ram

E U P & CHOKES MANIFOLD

10"/900 Cameron SS Space Saver
 30000 Working Pressure
 30000 Working Pressure Choke Manifold



24 CHOKES MANIFOLD EQUIPMENT

Submit to Appropriate
District Office
State Lease - 4 copies
Fee Lease - 3 copies

State of New Mexico
Energy, Minerals and Natural Resources Department

Form C-102
Revised 1-1-89

OIL CONSERVATION DIVISION

DISTRICT I
P.O. Box 1880, Hobbs, NM 88240

P.O. Box 2088
Santa Fe, New Mexico 87504-2088

DISTRICT II
P.O. Drawer DD, Artesia, NM 88210

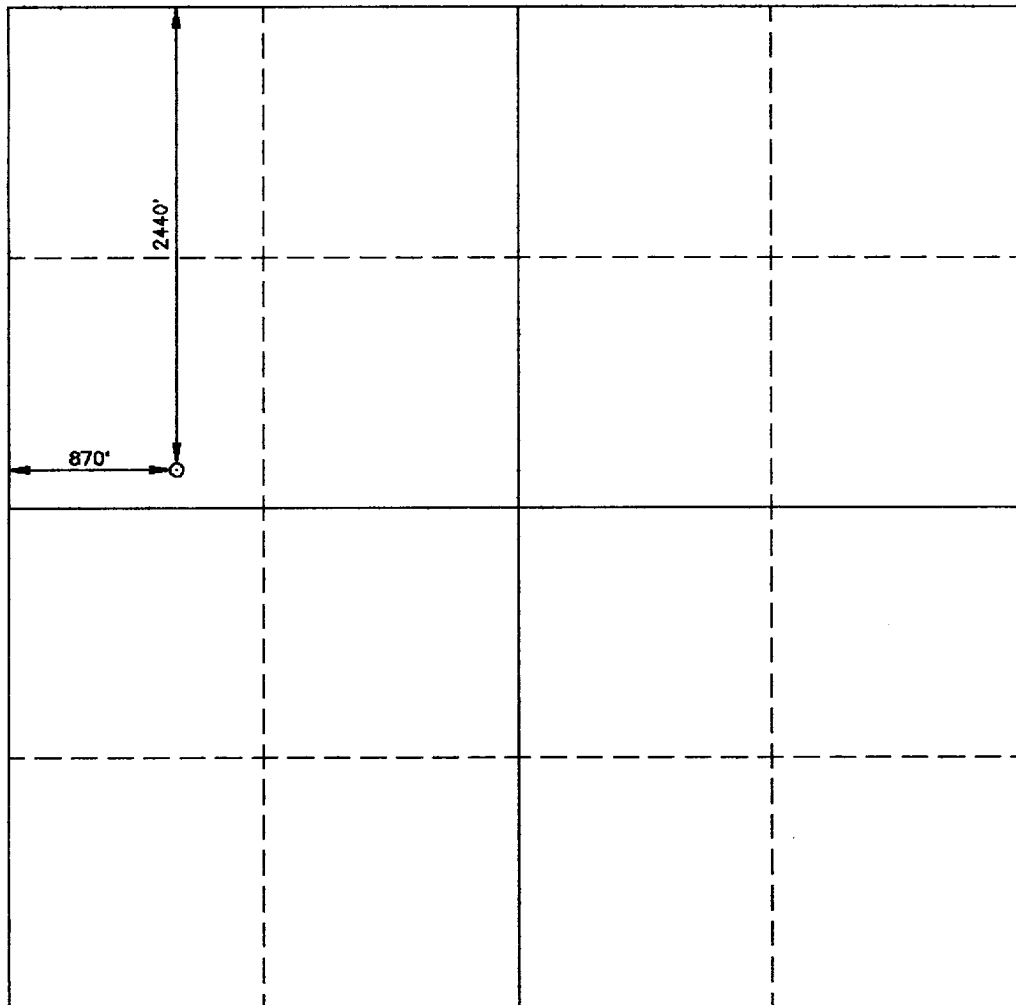
DISTRICT III
1000 Rio Bramos Rd., Aztec, NM 87410

WELL LOCATION AND ACREAGE DEDICATION PLAT

All Distances must be from the outer boundaries of the section

Operator ARMSTRONG ENERGY CORPORATION			Lease MOBIL LEA STATE		Well No. 5
Unit Letter E	Section 2	Township 20 SOUTH	Range 34 EAST	NMPM	County LEA
Actual Footage Location of Well: 2440 feet from the NORTH line and 870 feet from the WEST line					
Ground Level Elev. 3679'		Producing Formation Delaware		Pool N.E. Lea Delaware	
				Dedicated Acreage: 40 Acres	

- Outline the acreage dedicated to the subject well by colored pencil or hatchure marks on the plat below.
- If more than one lease is dedicated to the well, outline each and identify the ownership thereof (both as to working interest and royalty).
- If more than one lease of different ownership is dedicated to the well, have the interest of all owners been consolidated by communitization, unitization, force-pooling, etc.?
☐ Yes ☐ No If answer is "yes" type of consolidation _____
If answer is "no" list of owners and tract descriptions which have actually been consolidated. (Use reverse side of this form necessary).
No allowable will be assigned to the well unit all interests have been consolidated (by communitization, unitization, forced-pooling, otherwise) or until a non-standard unit, eliminating such interest, has been approved by the Division.



OPERATOR CERTIFICATION

I hereby certify that the information contained herein is true and complete to the best of my knowledge and belief.

Signature

Printed Name

Robert G. Armstrong

Position

President

Company

Armstrong Energy Corp.

Date

February 17, 1994

SURVEYOR CERTIFICATION

I hereby certify that the well location shown on this plat was plotted from field notes of actual surveys made by me or under my supervision, and that the same is true and correct to the best of my knowledge and belief.

Date Surveyed

FEBRUARY 7, 1994

Signature & Seal of
Professional Surveyor

Certificate No. JOHN W. WEST, 676
RONALD J. EDSON, 3239
GARY L. JONES, 7977

94-11-0246