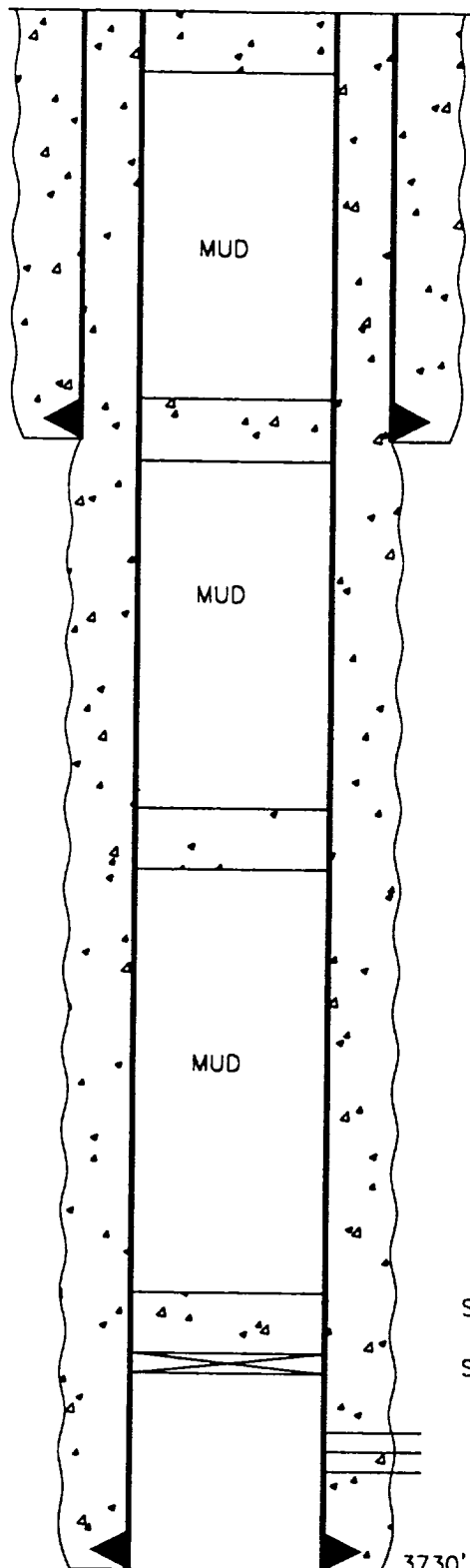


PROPOSED PLUG AND ABANDONMENT

6/8/98

Elev. = 3568' GL +9' KB



SPOT 10 SXS CEMENT SURFACE PLUG

SPOT 25 SXS CEMENT 330'-580'

461' - 8 5/8" Casing. Circulated to surface..

SPOT 25 SXS CEMENT 2150'-2400'

SPOT 35' CEMENT ON TOP OF C.I.B.P. @ 3275'

SET C.I.B.P. @ 3275'

PERFS 3323'-3571'

3730' - 5 1/2" CASING. CIRCULATED TO SURFACE.

CONOCO, INC.

SANDERSON A #20

2180' FSL & 810' FEL

Sec. 14, T-20S, R-36E