

## DISTRICT I

P.O. Box 1980, Hobbs, NM 88241-1980

## DISTRICT II

P.O. Box Drawer DD, Artesia, NM 88211-0719

## DISTRICT III

1000 Rio Brazos Rd., Aztec, NM 87410

## DISTRICT IV

P.O. Box 2088, Santa Fe, NM 87504-2088

## State of New Mexico

Energy, Minerals and Natural Resources Department

Form C-101

Revised February 10, 1994

Instructions on back

Submit to Appropriate District Office

State Lease - 6 Copies

Fee Lease - 5 Copies

## OIL CONSERVATION DIVISION

P.O. Box 2088

Santa Fe, New Mexico 87504-2088

☒ AMENDED REPORT

## APPLICATION FOR PERMIT TO DRILL, RE-ENTER, DEEPEN, PLUGBACK, OR ADD A ZONE

<sup>1</sup> Operator Name and Address TEXACO EXPLORATION & PRODUCTION INC. P.O. Box 3109, Midland Texas 79702		<sup>2</sup> OGRID Number 022351
		<sup>3</sup> API Number 30-025-32621
<sup>4</sup> Property Code 11002	<sup>5</sup> Property Name MONSTATE	<sup>6</sup> Well No. 7

<sup>7</sup> Surface Location

Ul or lot no.	Section	Township	Range	Lot.Idn	Feet From The	North/South Line	Feet From The	East/West Line	County
L	13	19-S	36-E		1650'	SOUTH	990'	WEST	LEA

<sup>8</sup> Proposed Bottom Hole Location If Different From Surface

Ul or lot no.	Section	Township	Range	Lot.Idn	Feet From The	North/South Line	Feet From The	East/West Line	County
<sup>9</sup> Proposed Pool 1 EUMONT YATES SEVEN RIVERS QUEEN (PRO GAS)					<sup>10</sup> Proposed Pool 2				

<sup>11</sup> Work Type Code N	<sup>12</sup> WellType Code G	<sup>13</sup> Rotary or C.T. R	<sup>14</sup> Lease Type Code S (B-1327)	<sup>15</sup> Ground Level Elevation 3720'
<sup>16</sup> Multiple No	<sup>17</sup> Proposed Depth 3835'	<sup>18</sup> Formation PENROSE	<sup>19</sup> Contractor	<sup>20</sup> Spud Date 8/8/94

<sup>21</sup> Proposed Casing and Cement Program

SIZE OF HOLE	SIZE OF CASING	WEIGHT PER FOOT	SETTING DEPTH	SACKS OF CEMENT	EST. TOP
11	8 5/8	24#	425'	200	SURFACE
7 7/8	5 1/2	15.5#	3835'	1015	SURFACE

<sup>22</sup> Describe the proposed program. If this application is to DEEPEN or PLUG BACK give the data on the present productive zone and proposed new productive zone. Describe the blowout prevention program, if any. Use additional sheets if necessary.

## CEMENTING PROGRAM:

SURFACE CASING - 200 SACKS CLASS C w/ 2% CACL<sub>2</sub> (14.8 PPG, 1.34 CF/S, 6.31 GW/S).

PRODUCTION CASING - 415 SACKS 35/65 POZ CLASS H w/ 6% GEL, 5% SALT, 1/4# FLOCELE (12.8 PPG, 1.94 CF/S, 10.4 GW/S). F/B 600 SACKS CLASS H (15.6 PPG, 1.19 CF/S, 5.2 GW/S).

NON STANDARD GAS PRORATION UNIT - ORDER NO. R-520.

THERE ARE NO OTHER OPERATORS IN THIS QUARTER QUARTER SECTION.

Permit Expires 6 Months From Approval  
Date Unless Drilling Underway.

<sup>23</sup> I hereby certify that the rules and regulations of the Oil Conservation Division have been complied with and that the information given above is true and complete to the best of my knowledge and belief.		OIL CONSERVATION DIVISION	
Signature <i>C. P. Basham / cwh</i>			
Printed Name C. P. Basham		Approved By: ORIGINAL SIGNED BY JERRY SEXTON DISTRICT I SUPERVISOR	
Title Drilling Operations Mgr.		Title:	
Date 7/28/94		Approval Date: AUG 01 1994	Expiration Date:
Telephone 688-4606		Conditions of Approval: Attached <input type="checkbox"/>	

DISTRICT I  
P. O. Box 1980, Hobbs, NM 88240

DISTRICT II  
P. O. Drawer 00, Artesia, NM 88210

DISTRICT III  
1000 Rio Brazos Rd., Aztec, NM 87410

DISTRICT IV  
P. O. Box 2088, Santa Fe, NM 87504-2088

State of New Mexico  
Energy, Minerals and Natural Resources Department

OIL CONSERVATION DIVISION  
PO Box 2088  
Santa Fe, NM 87504-2088

Form C-102  
Revised February 10, 1994

Instructions on back

Submit to Appropriate District Office

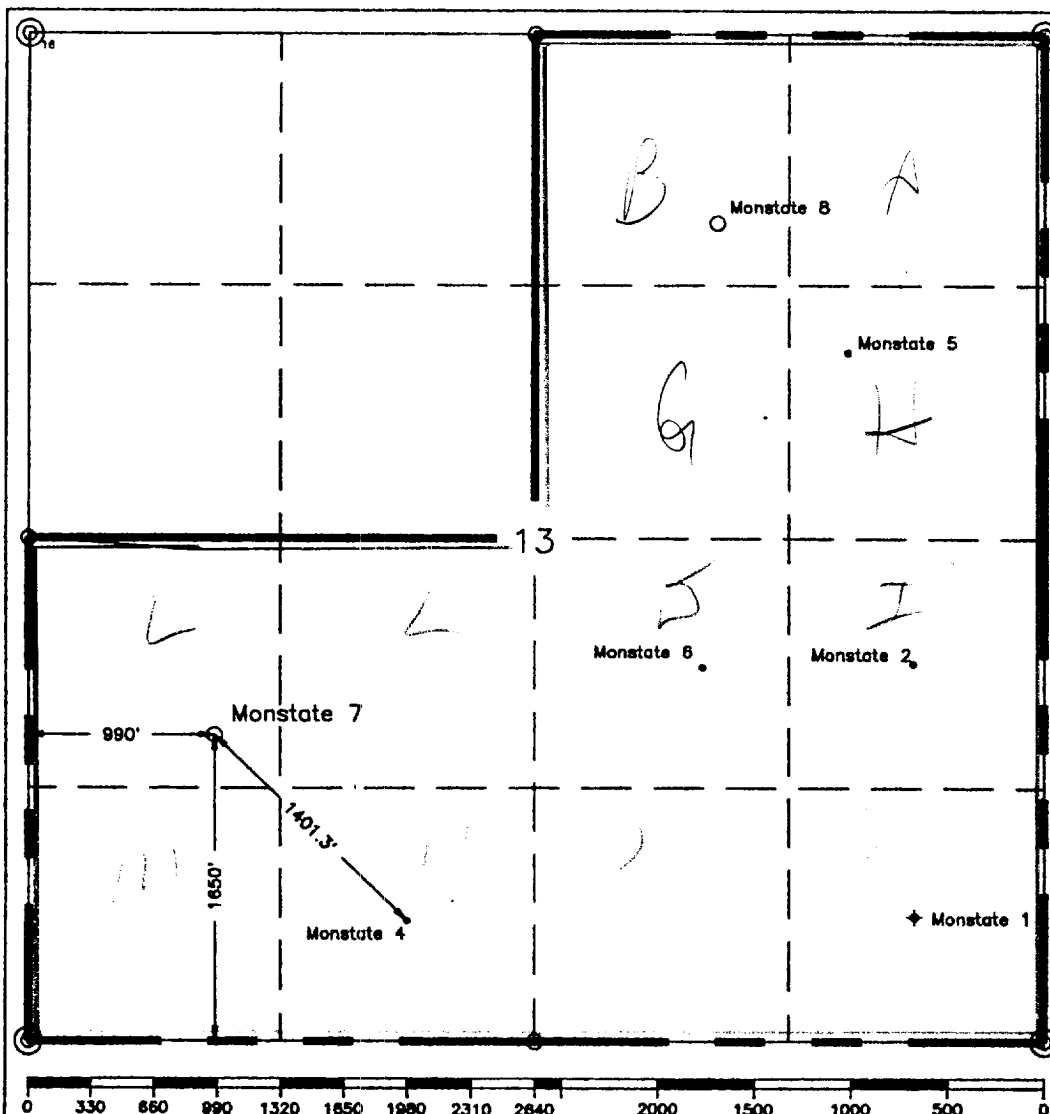
State Lease-4 copies  
Fee Lease-3 copies

☐ AMENDED REPORT

WELL LOCATION AND ACREAGE DEDICATION PLAT

<sup>1</sup> API Number 30-025-32621		<sup>2</sup> Pool Code 76480		<sup>3</sup> Pool Name Eumont Yates Seven Rivers Queen			
<sup>4</sup> Property Code 11002		<sup>5</sup> Property Name Monstate			<sup>6</sup> Well Number 7		
<sup>7</sup> GRID No. 22351		<sup>8</sup> Operator Name TEXACO EXPLORATION & PRODUCTION, INC.			<sup>9</sup> Elevation 3717'		
<sup>10</sup> Surface Location							
UL or lot no. L	Section 13	Township 19-S	Range 36-E	Lot Idn 1650'	Feet from the North/South line South 990'	East/West line West	<sup>7</sup> County Lea
<sup>11</sup> Bottom Hole Location If Different From Surface							
UL or lot no.	Section	Township	Range	Lot Idn	Feet from the North/South line	Feet from the East/West line	<sup>7</sup> County
<sup>12</sup> Dedicated Acres 4.80		<sup>13</sup> Joint or Infill		<sup>14</sup> Consolidation Code		<sup>15</sup> Order No.	

NO ALLOWABLE WILL BE ASSIGNED TO THIS COMPLETION UNTIL ALL INTERESTS HAVE BEEN CONSOLIDATED  
OR A NON-STANDARD UNIT HAS BEEN APPROVED BY THE DIVISION.



<sup>16</sup>OPERATOR CERTIFICATION

I hereby certify that the information contained herein is true and complete to the best of my knowledge and belief.

Signature

Royce D. Mariott/cwh

Printed Name

Royce D. Mariott

Position

Division Surveyor

Company

Texaco Expl. & Prod. Inc.

Date

July 28, 1994

<sup>18</sup>SURVEYOR CERTIFICATION

I hereby certify that the well location shown on this plat was plotted from field notes of actual surveys made by me or under my supervision, and that the same is true and correct to the best of my knowledge and belief.

Date Surveyed

July 26, 1994

Signature & Seal of  
Professional Surveyor

John S. Piper

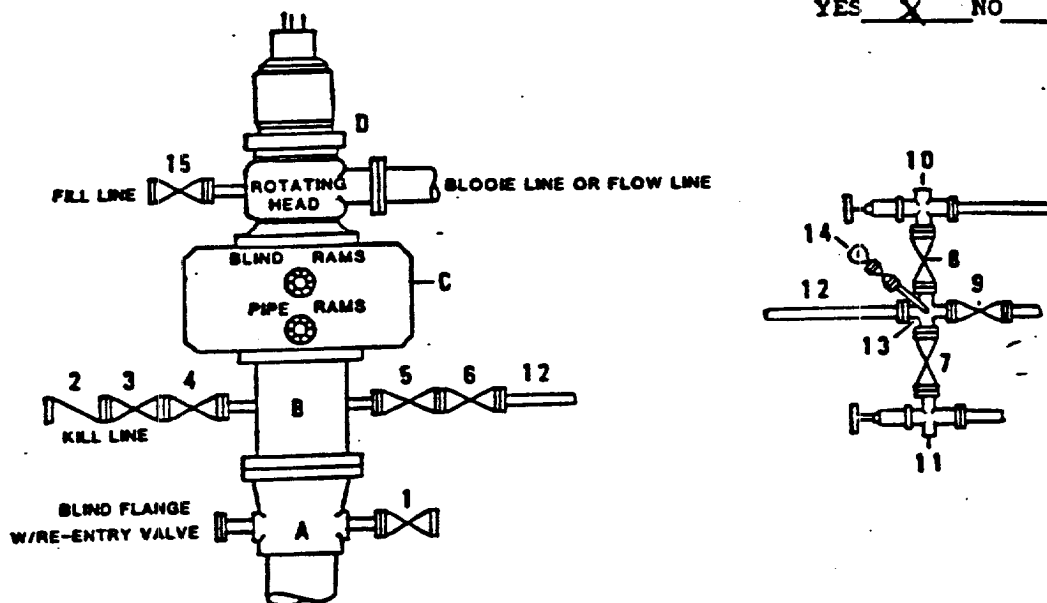
Certificate No.

7254 John S. Piper

Sheet

**DRILLING CONTROL  
CONDITION II-B 3000 WP  
FOR AIR DRILLING OR  
WHERE NITROGEN OR AIR BLOWS ARE EXPECTED**

H<sub>2</sub>S TRIM REQUIRED  
YES X NO       



**DRILLING CONTROL**

**MATERIAL LIST - CONDITION II - B**

- |            |   |
|------------|---|
| A          | Texaco Wellhead   |
| B          | 3000# W.P. drilling spool with a 2" minimum flanged outlet for kill line and 3" minimum flanged outlet for choke line.  |
| C          | 3000# W.P. Dual ram type preventer, hydraulic operated with 1" steel, 3000# W.P. control lines (where sub-structure height is adequate, 2 - 3000# W.P. single ram type preventers may be utilized). |
| D          | Rotating Head with fill up outlet and extended Bloop Line.  |
| 1,3,4,7,8, | 2" minimum 3000# W.P. flanged full opening steel gate valve, or Halliburton Lo Torc Plug valve.   |
| 2          | 2" minimum 3000# W.P. back pressure valve.  |
| 5,6,9      | 3" minimum 3000# W.P. flanged full opening steel gate valve, or Halliburton Lo Torc Plug valve.   |
| 12         | 3" minimum schedule 80, Grade "B", seamless line pipe.  |
| 13         | 2" minimum x 3" minimum 3000# W.P. flanged cross.   |
| 10,11      | 2" minimum 3000# W.P. adjustable choke bodies.  |
| 14         | Cameron Mud Gauge or equivalent ( location optional in choke line).   |
| 15         | 2" minimum 3000# W.P. flanged or threaded full opening steel gate valve, or Halliburton Lo Torc Plug valve.   |



**TEXACO, INC.**  
MIDLAND DIVISION  
MIDLAND, TEXAS



SCALE	DATE	EST. NO.	DRG. NO.
DRAWN BY			
CHECKED BY			
APPROVED BY			

**EXHIBIT C**