

DISTRICT I
P. O. Box 1980, Hobbs, NM 88240

DISTRICT II
P. O. Drawer DD, Artesia, NM 88210

DISTRICT III
1000 Rio Brazos Rd., Aztec, NM 87410

DISTRICT IV
P. O. Box 2088, Santa Fe, NM 87504-2088

State of New Mexico
Energy, Minerals and Natural Resources Department

OIL CONSERVATION DIVISION
PO Box 2088
Santa Fe, NM 87504-2088

Form C-102
Revised February 10, 1994

Instructions on back

Submit to Appropriate District Office

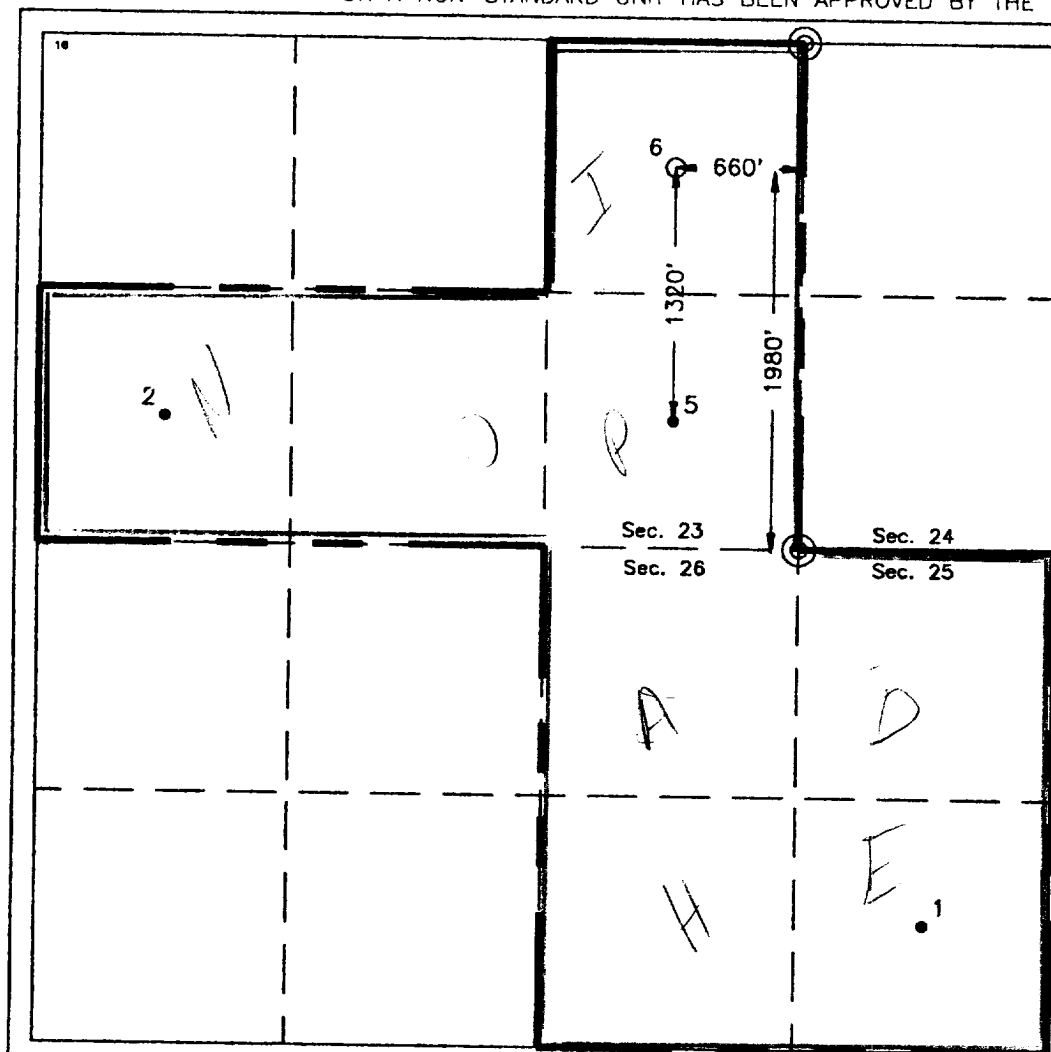
State Lease-4 copies
Fee Lease-3 copies

WELL LOCATION AND ACREAGE DEDICATION PLAT

☒ AMENDED REPORT

| | | | | | | | | | |
|--|---------------|---|---------------|---|------------------------|---------------------------|-----------------------|--------------------------------|---------------|
| ¹ API Number | | ² Pool Code | | ³ Pool Name Eumont Yates Seven Rivers Queen | | | | | |
| ⁴ Property Code | | ⁵ Property Name William Weir | | | | | | ⁶ Well Number 6 | |
| ⁷ GRID No. | | ⁸ Operator Name TEXACO EXPLORATION & PRODUCTION, INC. | | | | | | ⁹ Elevation 3687 | |
| ¹⁰ Surface Location | | | | | | | | | |
| UL or lot no. I | Section 23 | Township 19-S | Range 36-E | Lot Idn | Feet from the 1980' | North/South line South | Feet from the 660' | East/West line East | County Lea |
| ¹¹ Bottom Hole Location If Different From Surface | | | | | | | | | |
| UL or lot no. | Section | Township | Range | Lot Idn | Feet from the | North/South line | Feet from the | East/West line | County |
| ¹² Dedicated Acres 320 | | ¹³ Joint or Infill | | ¹⁴ Consolidation Code | | ¹⁵ Order No. | | | |

NO ALLOWABLE WILL BE ASSIGNED TO THIS COMPLETION UNTIL ALL INTERESTS HAVE BEEN CONSOLIDATED
OR A NON-STANDARD UNIT HAS BEEN APPROVED BY THE DIVISION.



¹⁶OPERATOR CERTIFICATION

I hereby certify that the information contained herein is true and complete to the best of my knowledge and belief.

Signature

Royce D. Mariott / SWH

Printed Name

Royce D. Mariott

Position

Division Surveyor

Company

Texaco Expl. & Prod. Inc.

Date

July 29, 1994

¹⁷SURVEYOR CERTIFICATION

I hereby certify that the well location shown on this plat was plotted from field notes of actual surveys made by me or under my supervision, and that the same is true and correct to the best of my knowledge and belief.

Date Surveyed

June 13, 1994

Signature & Seal of Professional Surveyor

John S. Piper

Certificate No.

7254 John S. Piper

Sheet

NSP = R-539-A