

WELL NAME: SANDERSON B-1 NO. 10

LOCATION : 930' FNL 660' FEL S-10A T-20S R-36E

Casing Program

Surface 8-5/8 inch in 12-1/4 hole at 420 ft.
Inter inch in hole at ft.
Prod 5-1/2 inch in 7-7/8 hole at 3800 ft.

Cementing Program

Surface

Lead 225 sxs Class C Mixed at 13.7 ppg
Additives 4% Gel 2% CaCl
Tail 100 sxs Class C Mixed at 14.8 ppg
Additives 2% CaCl

Intermediate (first stage)

Lead sxs Class Mixed at ppg
Additives
Tail sxs Class Mixed at ppg
Additives
Percent free water Water loss cc

(second stage)

Lead sxs Class Mixed at ppg
Additives
Tail sxs Class Mixed at ppg
Additives
Percent free water Water loss cc

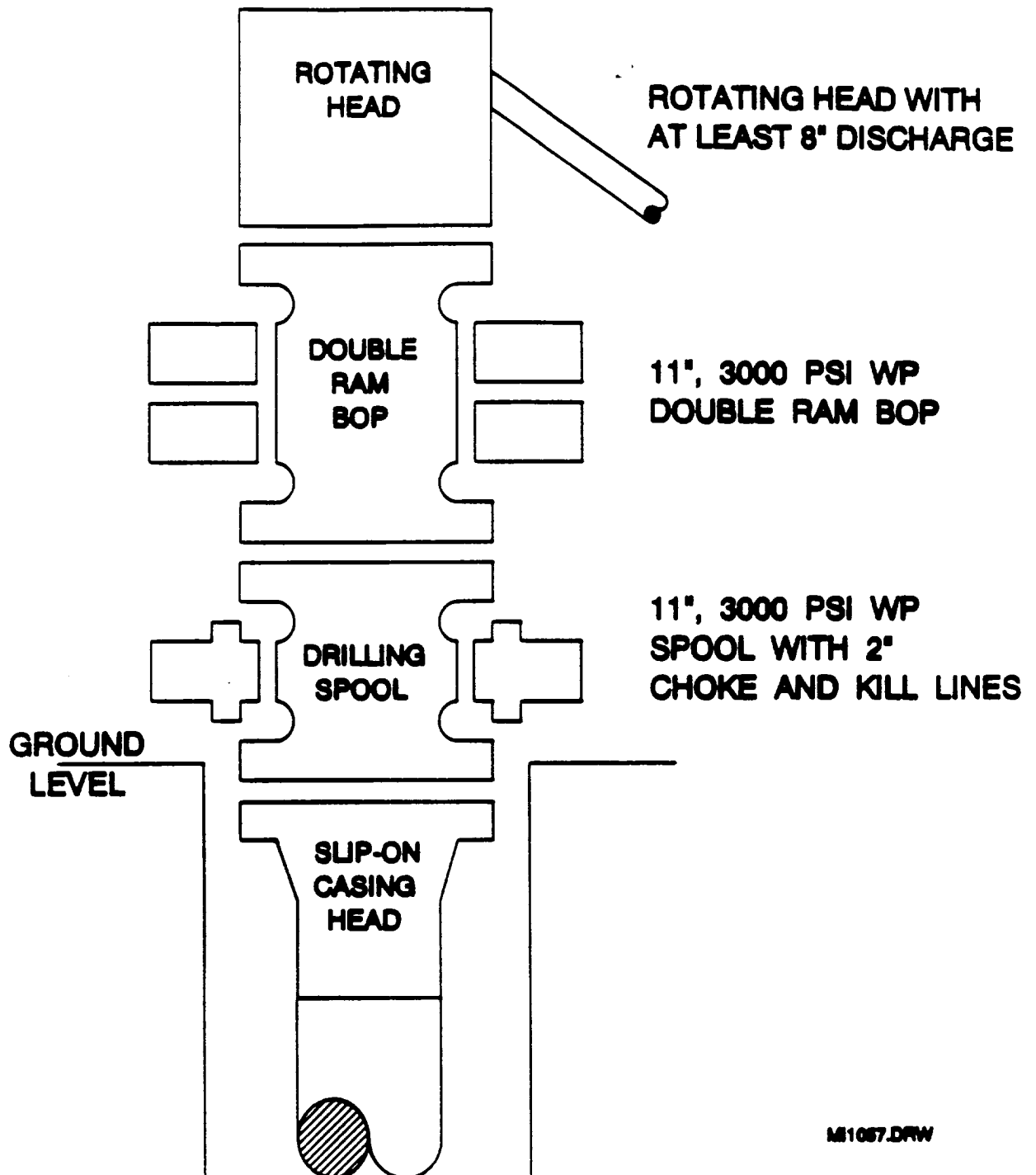
Production (first stage)

Lead 1100 sxs Class C Mixed at 12.7 ppg
Additives 5 pps salt 65:35:6
Tail 350 sxs Class C Mixed at 14.6 ppg
Additives 1.1% FloBlock 0.2% SMS
Percent free water Water loss cc

(second stage)

Lead sxs Class Mixed at ppg
Additives
Tail sxs Class Mixed at ppg
Additives
Percent free water Water loss cc

BOP SPECIFICATIONS



ME1057.DRW