

DISTRICT I

P.O. Box 1980, Hobbs, NM 88241-1980

DISTRICT II

P.O. Box Drawer 10, Artesia, NM 88211-0719

DISTRICT III

1000 Rio Brazos F.d., Aztec, NM 87410

DISTRICT IV

P.O. Box 2088, Santa Fe, NM 87504-2088

State of New Mexico

Energy, Minerals and Natural Resources Department

Form C-101

Revised February 10, 1994

Instructions on back

Submit to Appropriate District Office

State Lease - 6 Copies

Fee Lease - 5 Copies

OIL CONSERVATION DIVISION

P.O. Box 2088

Santa Fe, New Mexico 87504-2088

☒ AMENDED REPORT**APPLICATION FOR PERMIT TO DRILL, RE-ENTER, DEEPEN, PLUGBACK, OR ADD A ZONE**

¹ Operator Name and Address TEXACO EXPLORATION & PRODUCTION INC. P.O. Box 3109, Midland Texas 79702		² OGRID Number 022351
		³ API Number 30 025 32896
⁴ Property Code 1127	⁵ Property Name L. VAN ETEN	⁶ Well No. 17

7 Surface Location

UI or lot no.	Section	Township	Range	Lot. Idn	Feet From The	North/South Line	Feet From The	East/West Line	County
K	9	20-S	37-E		1650	SOUTH	1650	WEST	LEA

8 Proposed Bottom Hole Location If Different From Surface

UI or lot no.	Section	Township	Range	Lot. Idn	Feet From The	North/South Line	Feet From The	East/West Line	County
⁹ Proposed Pool 1 MONUMENT PADDOCK					¹⁰ Proposed Pool 2				

¹¹ Work Type Code N	¹² Well Type Code O	¹³ Rotary or C.T. ROTARY	¹⁴ Lease Type Code P	¹⁵ Ground Level Elevation 3540'
¹⁶ Multiple No	¹⁷ Proposed Depth 5300'	¹⁸ Formation PADDOCK	¹⁹ Contractor NABORS	²⁰ Spud Date 10/15/95

21 Proposed Casing and Cement Program

SIZE OF HOLE	SIZE OF CASING	WEIGHT PER FOOT	SETTING DEPTH	SACKS OF CEMENT	EST. TOP
14 3/4	11 3/4	42#	1150'	900 SACKS	SURFACE
11	8 5/8	32#	4000'	1600 SACKS	SURFACE
7 7/8	5 1/2	15.5#	5300'	500 SACKS	SURFACE

²² Describe the proposed program. If this application is to DEEPEN or PLUG BACK give the data on the present productive zone and proposed new productive zone. Describe the blowout prevention program, if any. Use additional sheets if necessary.

CEMENTING PROGRAM:

SURFACE CASING - 700 SACKS CLASS C W/ 2% GEL, 2% CACL2 (14.2 PPG, 1.50 CF/S, 7.45 GW/S). F/B 200 SACKS CLASS C W/ 2% CACL2 (14.8 PPG, 1.34 CF/S, 6.3 GW/S).
 INTERMEDIATE CASING - 1400 SACKS 35/65 POZ CLASS H W/ 6% GEL, 5% SALT, 1/4# FLOCELE (12.8 PPG, 1.94 CF/S, 10.4 GW/S). F/B 200 SACKS CLASS H W/ 2% CACL2 (15.6 PPG, 1.19 CF/S, 5.2 GW/S).
 PRODUCTION CASING - 300 SACKS 35/65 POZ CLASS H W/ 6% GEL, 5% SALT, 1/4# FLOCELE (12.8 PPG, 1.94 CF/S, 10.4 GW/S). F/B 200 SACKS 50/50 POZ CLASS H W/ 2% GEL, 5% SALT, 1/4# FLOCELE (14.2 PPG, 1.35 CF/S, 6.3 GW/S).

THERE ARE NO OTHER OPERATORS IN THIS QUARTER QUARTER SECTION.
 * AMENDED LOCATION, THE PRODUCING POOL AND THE CASING PROGRAM.

²³ I hereby certify that the rules and regulations of the Oil Conservation Division have been complied with and that the information given above is true and complete to the best of my knowledge and belief.

Signature

C. Wade Howard

Printed Name

C. Wade Howard

Title Eng. Assistant

Date 9/27/95

Telephone 688-4606

OIL CONSERVATION DIVISION
 ORIGINAL SIGNED BY
 Approved By: GARY MOORE

Title:

Approval Date: SEP 29 1995

Expiration Date:

 Conditions of Approval:
 Attached ☐

DISTRICT I
P. O. Box 1980, Hobbs, NM 88240

DISTRICT II
P. O. Drawer DD, Artesa, NM 88210

DISTRICT III
1000 Rio Brazos Rd., Jctec, NM 87410

DISTRICT IV
P. O. Box 2088, Santa Fe, NM 87504-2088

State of New Mexico
Energy, Minerals and Natural Resources Department

OIL CONSERVATION DIVISION

PO Box 2088
Santa Fe, NM 87504-2088

Form C-102
Revised February 10, 1994

Instructions on back

Submit to Appropriate District Office

State Lease-4 copies
Fee Lease-3 copies

WELL LOCATION AND ACREAGE DEDICATION PLAT

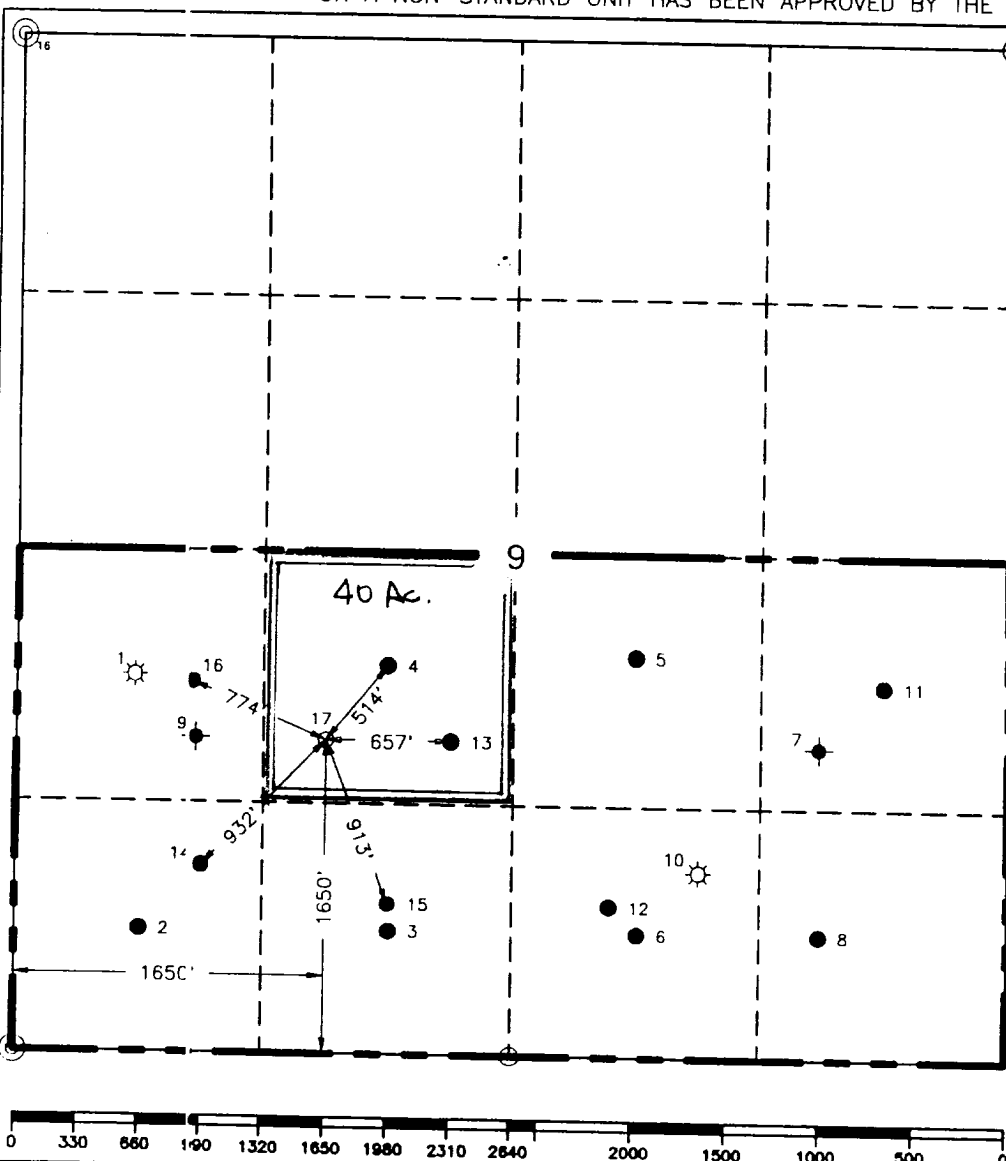
☒ AMENDED REPORT

¹ API Number 30-025-32896		² Pool Code		³ Pool Name Monument Paddock	
⁴ Property Code 11127		⁵ Property Name L. Van Etten			⁶ Well Number 17
⁷ GRID No. 22351		⁸ Operator Name TEXACO EXPLORATION & PRODUCTION, INC.			⁹ Elevation 3540'

¹⁰ Surface Location									
UL or lot no. K	Section 9	Township 20-S	Range 37-E	Lot Idn	Feet from the 1650'	North/South line South	Feet from the 1650'	East/West line West	⁷ County Lea

¹¹ Bottom Hole Location If Different From Surface									
UL or lot no.	Section	Township	Range	Lot Idn	Feet from the	North/South line	Feet from the	East/West line	⁷ County
¹² Dedicated Acres 40		¹³ Joint or Infill		¹⁴ Consolidation Code		¹⁵ Order No.			

NO ALLOWABLE WILL BE ASSIGNED TO THIS COMPLETION UNTIL ALL INTERESTS HAVE BEEN CONSOLIDATED
OR A NON-STANDARD UNIT HAS BEEN APPROVED BY THE DIVISION.

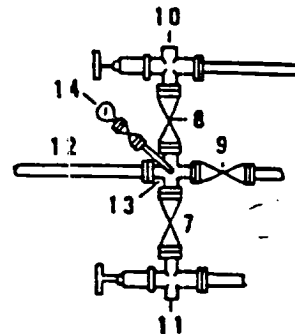
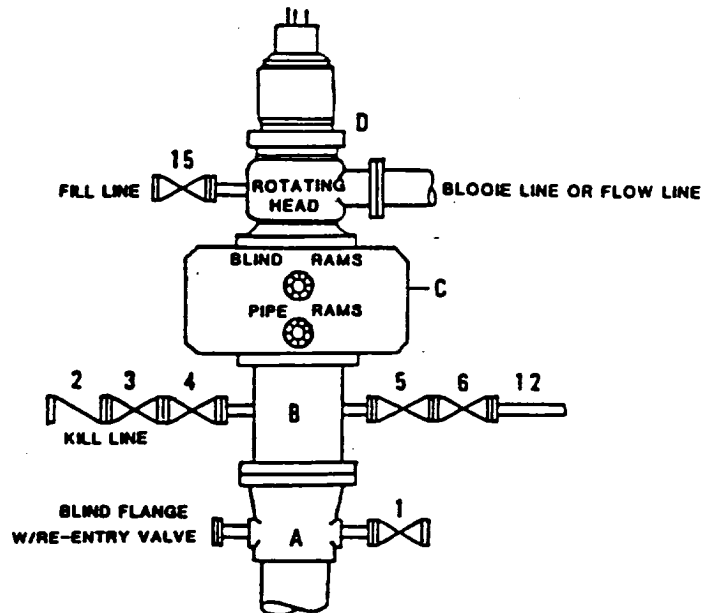


¹⁰ OPERATOR CERTIFICATION	
I hereby certify that the information contained herein is true and complete to the best of my knowledge and belief.	
Signature <i>C. Wade Howard</i>	
Printed Name C. Wade Howard	
Position Engineer's Assistant	
Company Texaco Expl. & Prod. Inc.	
Date September 22, 1995	
¹⁵ SURVEYOR CERTIFICATION	
I hereby certify that the well location shown on this plat was plotted from field notes of actual surveys made by me or under my supervision, and that the same is true and correct to the best of my knowledge and belief.	
Date Surveyed September 19, 1995	
Signature & Seal of Professional Surveyor <i>John S. Piper</i>	
Certificate No. 7254 John S. Piper	



**DRILLING CONTROL
CONDITION II-B 3000 WP
FOR AIR DRILLING OR
WHERE NITROGEN OR AIR BLOWS ARE EXPECTED**

H₂S TRIM REQUIRED
YES _____ NO _____



DRILLING CONTROL

MATERIAL LIST - CONDITION II - B

- | | |
|----------------|---|
| A | Texaco Wellhead |
| B | 3000# W.P. drilling spool with a 2" minimum flanged outlet for kill line and 3" minimum flanged outlet for choke line. |
| C | 3000# W.P. Dual ram type preventer, hydraulic operated with 1" steel, 3000# W.P. control lines (where sub-structure height is adequate, 2 - 3000# W.P. single ram type preventers may be utilized). |
| D | Rotating Head with fill up outlet and extended Bloode Line. |
| 1,3,4,
7,8, | 2" minimum 3000# W.P. flanged full opening steel gate valve, or Halliburton Lo Torc Plug valve. |
| 2 | 2" minimum 3000# W.P. back pressure valve. |
| 5,6,9 | 3" minimum 3000# W.P. flanged full opening steel gate valve, or Halliburton Lo Torc Plug valve. |
| 12 | 3" minimum schedule 80, Grade "B", seamless line pipe. |
| 13 | 2" minimum x 3" minimum 3000# W.P. flanged cross. |
| 10,11 | 2" minimum 3000# W.P. adjustable choke bodies. |
| 14 | Cameron Mud Gauge or equivalent (location optional in choke line). |
| 15 | 2" minimum 3000# W.P. flanged or threaded full opening steel gate valve, or Halliburton Lo Torc Plug valve. |



TEXACO, INC.
MIDLAND DIVISION
MIDLAND, TEXAS



SCALE	DATE	EST. NO.	DRG. NO.
DRAWN BY			
CHECKED BY			
APPROVED BY			

EXHIBIT C