

OPER. OGRID NO. 18912  
PROPERTY NO. 16996  
UNITED STATES DEPARTMENT OF THE INTERIOR  
BUREAU OF LAND MANAGEMENT  
APPLICATION FOR PERMIT  
POOL CODE 37584  
EFFECT. DATE 4/26/95  
API NO. 30025-32940

U.S. COMMISSION

Form approved.  
Mexico No. 1004-0136  
Expires: December 31, 1991

1a. TYPE OF WORK

DRILL ☒

DEEPEN ☐

b. TYPE OF WELL

OIL WELL ☒

GAS WELL ☐

OTHER ☐

SINGLE ZONE ☐

MULTIPLE ZONE ☐

2. NAME OF OPERATOR

Read & Stevens, Inc.

MAR 03 1995

505/622-3770

3. ADDRESS AND TELEPHONE NO.

P. O. Box 1518

Roswell, NM 88202

4. LOCATION OF WELL (Report location clearly and in accordance with any State requirements.)

At surface

2310' FNL & 1980' FWL

At proposed prod. zone

Same

14. DISTANCE IN MILES AND DIRECTION FROM NEAREST TOWN OR POST OFFICE\*

30 miles SW of Hobbs, NM

15. DISTANCE FROM PROPOSED\* LOCATION TO NEAREST PROPERTY OR LEASE LINE, FT. (Also to nearest drlg. unit line, if any)

330'

16. NO. OF ACRES IN LEASE

282.4

17. NO. OF ACRES ASSIGNED TO THIS WELL

40

18. DISTANCE FROM PROPOSED LOCATION\* TO NEAREST WELL, DRILLING, COMPLETED, OR APPLIED FOR, ON THIS LEASE, FT.

1361'

19. PROPOSED DEPTH

8,400'

20. ROTARY OR CABLE TOOLS

Rotary

21. ELEVATIONS (Show whether DF, RT, GR, etc.)

3653'

Capitan Controlled Water Basin

22. APPROX. DATE WORK WILL START\*

May 15, 1995

23. PROPOSED CASING AND CEMENTING PROGRAM

Secretary's Potash

SIZE OF HOLE	GRADE, SIZE OF CASING	WEIGHT PER FOOT	SETTING DEPTH	QUANTITY OF CEMENT
17 1/2"	13 3/8" J-55	54.5#	1600'	Circ 1000 sx Lite + 200 "C
11"	8 5/8" S-80	32.0#	5000'	Circ 1100 sx** see note
7 7/8"	5 1/2" N-80	17#	8400'	Tieback w/500 or 975 sx * SEE STIP. ←

Mud Program:

0' - 1600': Fresh water native mud:  
1600' - 5000': Brine mud:  
5000' - 8400': Cut brine mud w/starch:

Mud Wt.

8.4 ppg  
10 ppg  
8.8 ppg

Vis.

32  
28-32  
32-40

W/L Control

No W/L control  
No W/L control  
W/L control 15cc

BOP Program:

A 11" 5000 psi wp Shaffer Type LWS BOP, with a 5000 psi wp 11" GK Hydril, will installed on the 13 3/8" casing. Casing and BOP will be tested before drilling out with 11". BOP will be tested daily as a 3000 psi wp system.

\* NOTE: If severe lost circulation is not encountered, hole will be reduced at 5000' to 7 7/8" and drill ahead WITHOUT setting the 8 5/8" casing.

\*\* 8 5/8": Cement with DV tool in two stages starting at 3800':

1st stage: Lead 200 sx lite, tail in w/200 sx "C".

2nd stage: Lead 500 sx lite cement, tail w/200 sx "C". Cement to surface

Approval Subject to  
General Requirements and  
Special Stipulations  
Attached

IN ABOVE SPACE DESCRIBE PROPOSED PROGRAM: If proposal is to deepen, give data on present productive zone and proposed new productive zone. If proposal is to drill or deepen directionally, give pertinent data on subsurface locations and measured and true vertical depths. Give blowout preventer program, if any.

24. SIGNED George R. Smith Agent for: Read & Stevens, Inc. March 7, 1995  
TITLE Read & Stevens, Inc. DATE March 7, 1995

(This space for Federal or State office use)

PERMIT NO.

APPROVAL DATE

Application approval does not warrant or certify that the applicant holds legal or equitable title to those rights in the subject lease which would entitle the applicant to conduct operations thereon.  
CONDITIONS OF APPROVAL, IF ANY:

APPROVED BY George J. Lucero TITLE Acting State Director DATE 4-17-95

\*See Instructions On Reverse Side

MOOREHEAD 21-0-10 40 4  
4371 21 04  
MOORE 2015M 936 2015M

ISTRICT II  
O. Drawer DD, Artesia, NM 86210

## OIL CONSERVATION DIVISION

**DISTRICT III**  
**100 Rio Brazos Rd., Astec, NM 87410**

P.O. Box 2088  
Santa Fe, New Mexico 87504-2088

☐ **AMENDED REPORT**

# WELL LOCATION AND ACREAGE DEDICATION PLAT

API Number 30-025-32940	Pool Code 37584	Pool Name <del>Quail Ridge</del> Delaware
Property Code 16990	Property Name QUAIL FEDERAL	Well Number 2
OGRID No. 18917	Operator Name READ & STEVENS, INC.	Elevation 3649

### Surface Location

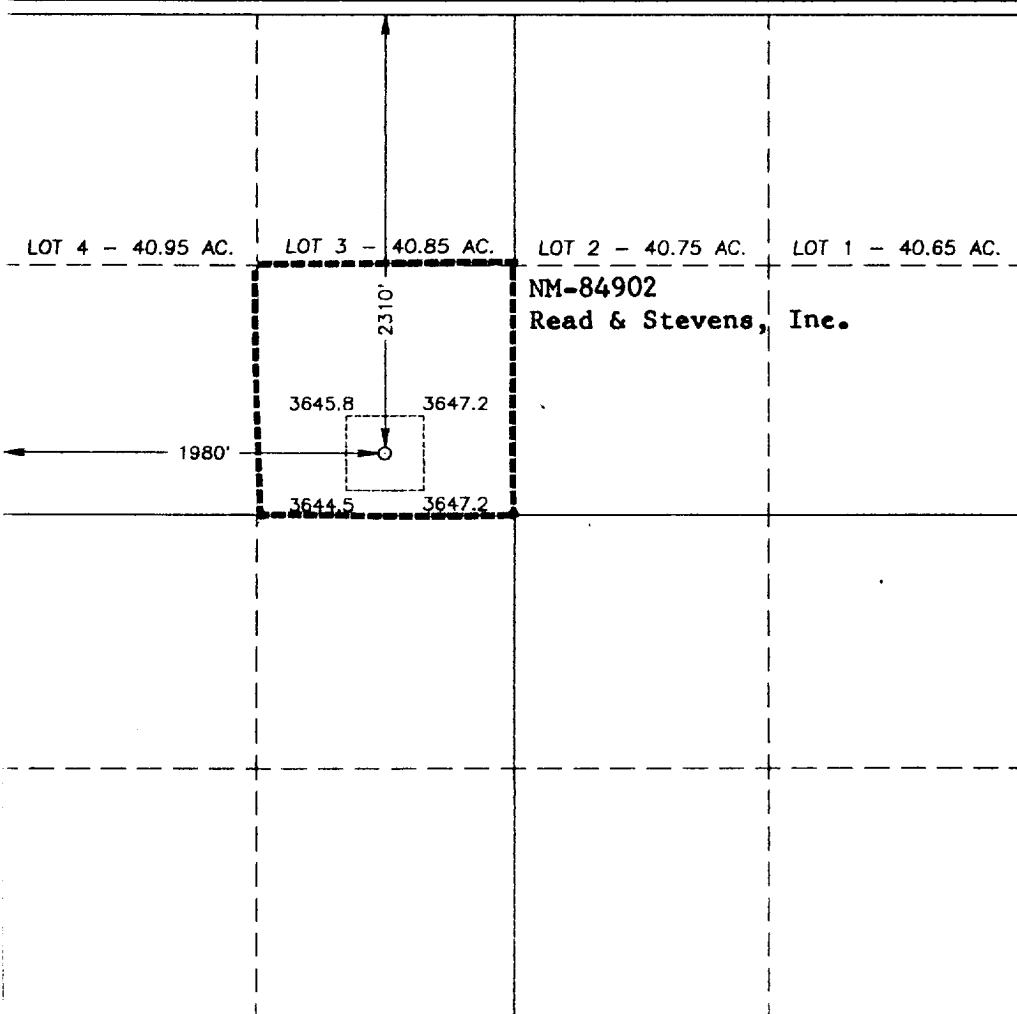
UL or lot No.	Section	Township	Range	Lot Idn	Feet from the	North/South line	Feet from the	East/West line	County
	3	20 S	34 E		2310	NORTH	1980	WEST	LEA

### Bottom Hole Location If Different From Surface

UL or lot No.	Section	Township	Range	Lot Idn	Feet from the	North/South line	Feet from the	East/West line	County
---------------	---------	----------	-------	---------	---------------	------------------	---------------	----------------	--------

Dedicated Acres	Joint or Infill	Consolidation Code	Order No.
40			

NO ALLOWABLE WILL BE ASSIGNED TO THIS COMPLETION UNTIL ALL INTERESTS HAVE BEEN CONSOLIDATED  
OR A NON-STANDARD UNIT HAS BEEN APPROVED BY THE DIVISION



### OPERATOR CERTIFICATION

I hereby certify the the information  
contained herein is true and complete to the  
best of my knowledge and belief.

Signature *George Smith*

**George R. Smith**

Printed Name \_\_\_\_\_

Agent for Read & Stevens, Inc.

**Title**

**March 7, 1995**

Date \_\_\_\_\_

### SURVEYOR CERTIFICATION

I hereby certify that the well location shown on this plat was plotted from field notes of actual surveys made by me or under my supervision and that the same is true and correct to the best of my belief.

FEBRUARY 27, 1995

Date Surveyed \_\_\_\_\_ JSR  
Signature & Seal of \_\_\_\_\_  
Professional Surveyor \_\_\_\_\_

W.O. Num. 95-15-0299

Certificate No. JOHN W. WEST, 676  
RONALD J. EIDSON, 3239

APPLICATION FOR DRILLING  
READ & STEVENS, INC.  
Quail Federal, Well No. 2  
2310' FNL & 1980' FWL, Sec. 3-T20S-R34E  
Lea County, New Mexico  
Lease No.: NM-84902  
(Development Well)

In conjunction with Form 3160-3, Application for Permit to Drill subject well, Read & Stevens, Inc. submits the following items of pertinent information in accordance with BLM requirements:

1. The geologic surface formation is recent Permian with quaternary alluvium and other surficial deposits.
2. The estimated tops of geologic markers are as follows:

Rustler	1,580'	Bone Spring	8,250'
Top of Salt	1,770'	T.D.	8,400'
Base of Salt	3,120'		
Yates	3,200'		
7 Rivers	3,670'		
Delaware	5,200'		
3. The estimated depths at which water, oil or gas formations are anticipated to be encountered:

Water: Surface water in the Triassic between 80' - 230'.

Oil: Possible in the Delaware below 5500'.

Gas: None expected.
4. Proposed Casing Program: See Form 3160-3.
5. Proposed Control Equipment: See Form 3160-3 and Exhibit "E".
6. Mud Program: See Form 3160-3.
7. Auxiliary Equipment: Blowout Preventer, gas detector, Kelly cock, pit level monitor, flow sensors and stabbing valve.
8. Testing, Logging, and Coring Program:

Drill Stem Tests: None unless warranted.	
Logging: T.D. to 5000':	G/R, CNL-FDC, DLL, MSFL
T.D. to surface:	G/R, neutron
Coring: None planned.	
9. No abnormal pressures or temperatures are anticipated. In the event abnormal pressures are encountered the proposed mud program will be modified to increase the mud weight. Estimated BHP = 3300 psi (evac. hole) with temperature of 140°.
10. H<sub>2</sub>S: None expected. None in previously drilled wells, but a Drilling Operations Plan, Exhibit "F", is being submitted to cover this contingency.
11. Anticipated starting date: May 15, 1995.  
Anticipated completion of drilling operations: Approx. 3 weeks.



KEN REYNOLDS—PRESIDENT  
ARNIE NEWKIRK—VICE-PRESIDENT

DRILLING CO., INC. — OIL WELL DRILLING CONTRACTORS

P. O. BOX 1498 ROSWELL, NEW MEXICO 88202-1498  
505/623-5070 505/746-2719  
ROSWELL, NM ARTESIA, NM

RIG # 1

BLOWOUT PREVENTOR ARRANGEMENT

11" SHAFFER TYPE LWS, 5000 psi WP  
11" GK HYDRIL, 5000 psi WP  
80 GALLON, 4 STATION PAYNE ACCUMULATOR  
3000 psi WP CHOKE MANIFOLD

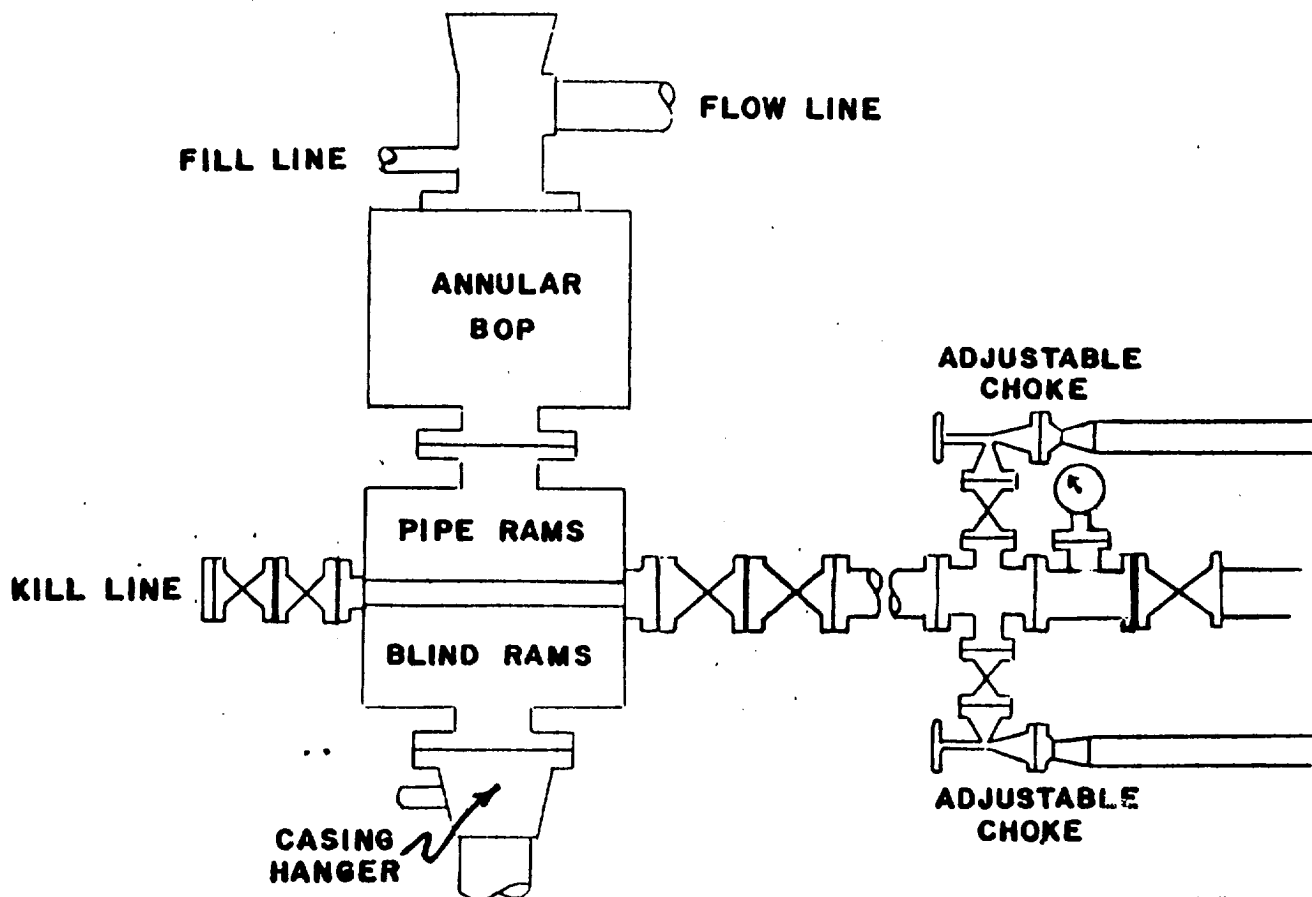


EXHIBIT "E"  
READ & STEVENS, INC.  
Quail Federal, Well No. 2  
BOP Specifications