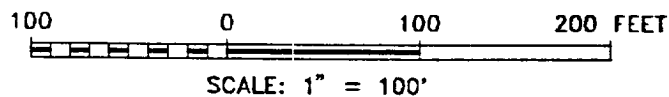
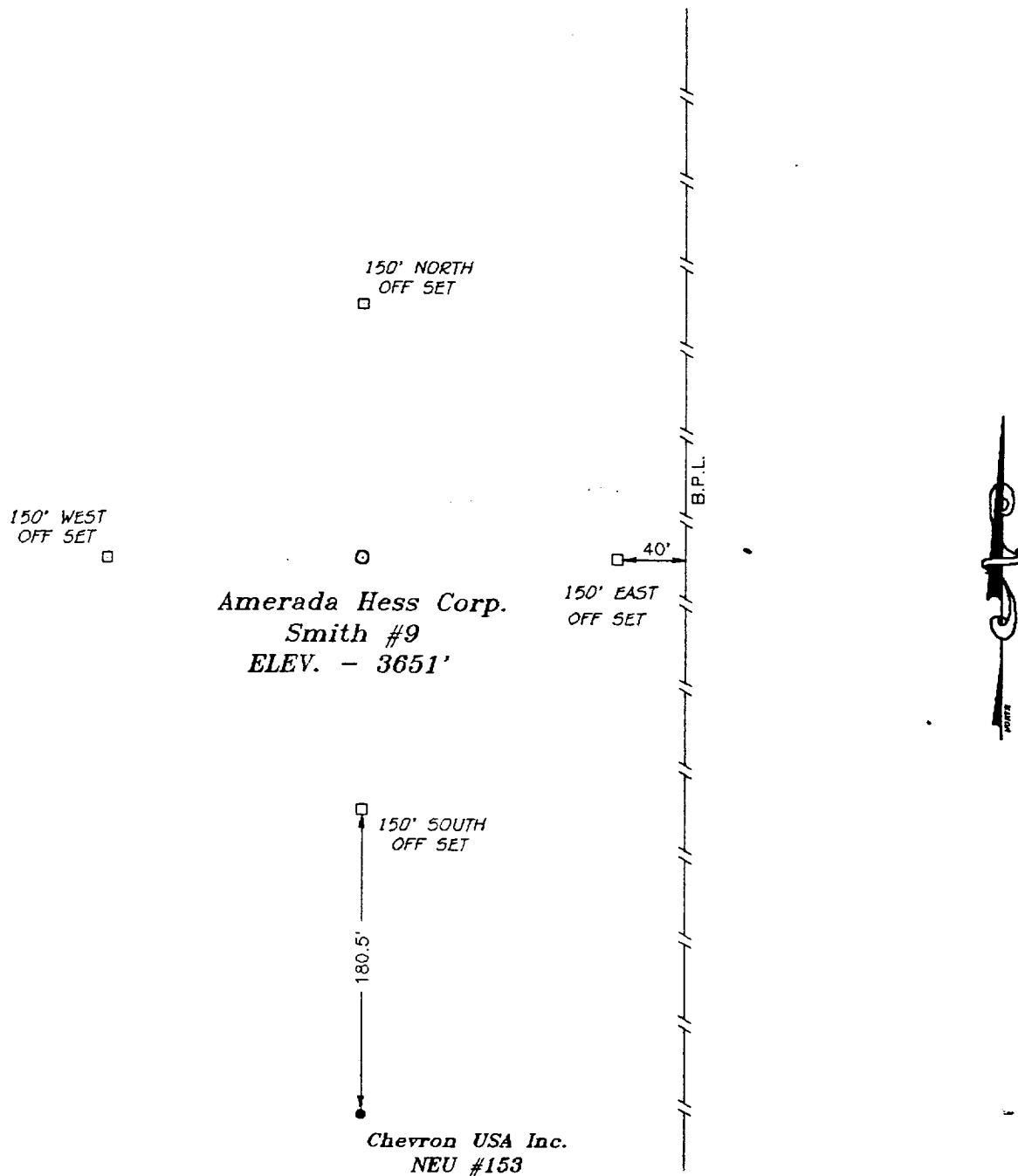


SECTION 34, TOWNSHIP 19 SOUTH, RANGE 36 EAST, N.M.P.M.,
LEA COUNTY, NEW MEXICO.



AMERADA HESS CORPORATON

REF: SMITH No. 9 / WELL TOPO

THE SMITH No. 9 LOCATED 330' FROM THE NORTH
LINE AND 660' FROM THE EAST LINE OF
SECTION 34, TOWNSHIP 19 SOUTH, RANGE 36 EAST,
N.M.P.M., LEA COUNTY, NEW MEXICO.

BASIN SURVEYS P.O. BOX 1786-HOBBS, NEW MEXICO

W.O. Number: 6270

Drawn By: S.C. NICHOLS

Date: 07-02-96

Disk: SCN #29 - AHC6270B.DWG

Survey Date: 07-07-96

Sheet 1 of 1 Sheets

