

DISTRICT I  
P.O. Box 1988, Hobbs, NM 88241-1988

State of New Mexico

Energy, Minerals and Natural Resources Department

Form C-102  
Revised February 10, 1994  
Submit to Appropriate District Office  
State Lease - 4 Copies  
Fee Lease - 3 Copies

DISTRICT II  
P.O. Drawer 80, Aramis, NM 88211-0719

DISTRICT III  
1006 Rio Grande Rd., Artes, NM 87410

DISTRICT IV  
P.O. Box 2088, Santa Fe, N.M. 87504-2088

OIL CONSERVATION DIVISION

P.O. Box 2088  
Santa Fe, New Mexico 87504-2088

☐ AMENDED REPORT

WELL LOCATION AND ACREAGE DEDICATION PLAT

API Number 30-025-33578	Pool Code 46970	Pool Name Monument (Abo), Wildcat (Blinbry) (Paddock)
Property Code 6440	Property Name McGRAIL STATE	Well Number 8
OGRID No. 014021	Operator Name MARATHON OIL COMPANY	Elevation 3709'

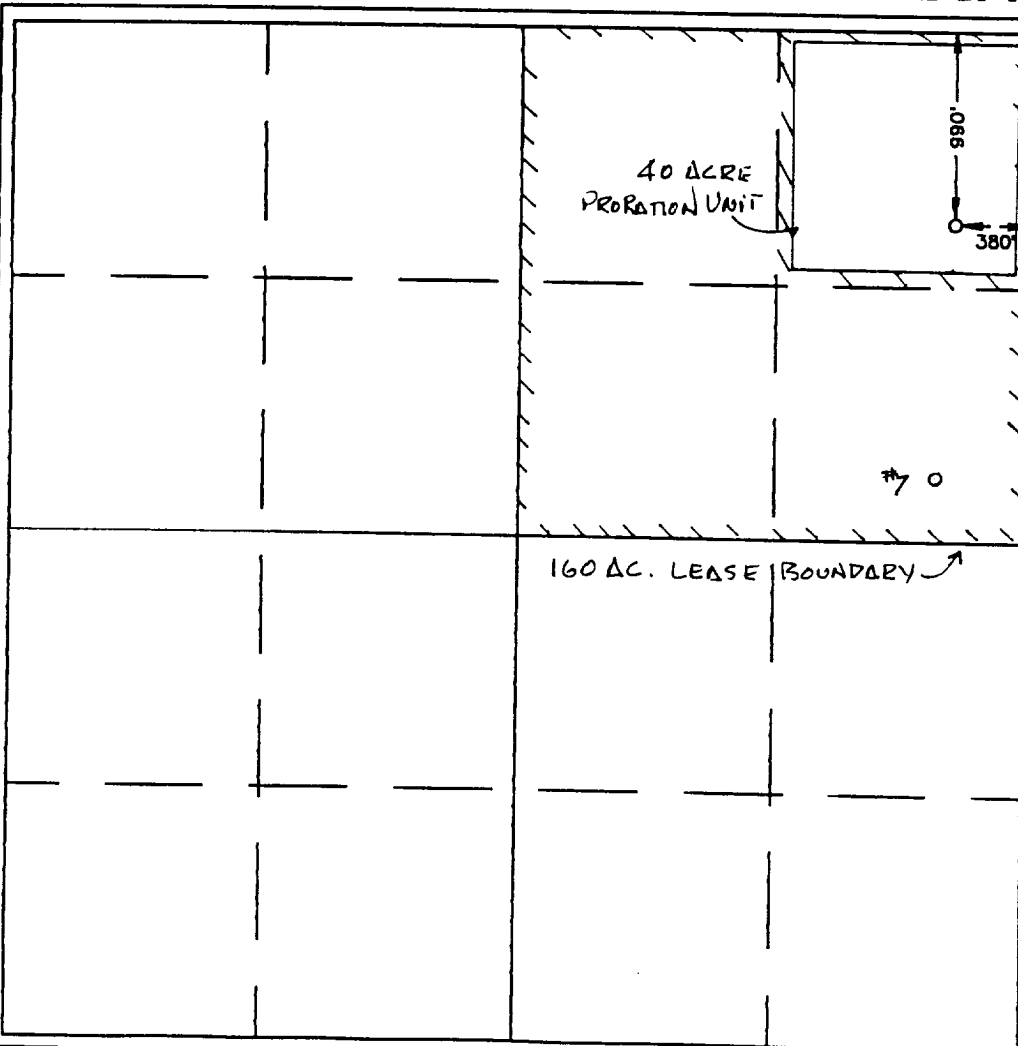
Surface Location

UL or lot No.	Section	Township	Range	Lot Idn	Feet from the	North/South line	Feet from the	East/West line	County
A	27	19 S	36 E		990	NORTH	380	EAST	LEA

Bottom Hole Location If Different From Surface

UL or lot No.	Section	Township	Range	Lot Idn	Feet from the	North/South line	Feet from the	East/West line	County
Dedicated Acres 40	Joint or Infill	Consolidation Code	Order No.						

NO ALLOWABLE WILL BE ASSIGNED TO THIS COMPLETION UNTIL ALL INTERESTS HAVE BEEN CONSOLIDATED  
OR A NON-STANDARD UNIT HAS BEEN APPROVED BY THE DIVISION



OPERATOR CERTIFICATION

I hereby certify the information contained herein is true and complete to the best of my knowledge and belief.

Walter Duane FORAN  
Signature

D. P. Nordt

Printed Name  
Drilling Superintendent

Title  
9/11/96  
Date

SURVEYOR CERTIFICATION

I hereby certify that the well location shown on this plat was plotted from field notes of actual surveys made by me or under my supervision, and that the same is true and correct to the best of my belief.

SEPTEMBER 10, 1996

Date Surveyed  
Signature & Seal of Professional Surveyor  
RES

John W. West  
3239  
9-10-96

W.O. Num. 96-11-1151  
Certificate No. JOHN W. WEST 676  
PROFESSOR J. EDSON 3239  
JERRY EDSON 12841