

District I
PO Box 1980, Hobbs, NM 88241-1980
District II
811 South First, Artesia, NM 88210
District III
1000 Rio Brazos Rd., Aztec, NM 87410
District IV
2040 South Pacheco, Santa Fe, NM 87505

State of New Mexico
Energy, Minerals & Natural Resources Department

OIL CONSERVATION DIVISION
2040 South Pacheco
Santa Fe, NM 87505

Form C-101
Revised October 18, 1994
Instructions on back
Submit to Appropriate District Office
State Lease - 6 Copies
Fee Lease - 5 Copies

☐ AMENDED REPORT

APPLICATION FOR PERMIT TO DRILL, RE-ENTER, DEEPEN, PLUGBACK, OR ADD A ZONE

¹ Operator Name and Address. EnerQuest Resources, LLC P. O. Box 11150 Midland, TX 79702		² OGRID Number 160620
		³ API Number 30-025-33780
⁴ Property Code 20153	⁵ Property Name McNeill "30"	⁶ Well No. 1

⁷ Surface Location

UL or lot no.	Section	Township	Range	Lot Idn	Feet from the	North/South line	Feet from the	East/West line	County
P	30	19 S	38 E		467	SOUTH	990	EAST	LEA

⁸ Proposed Bottom Hole Location If Different From Surface

UL or lot no.	Section	Township	Range	Lot Idn	Feet from the	North/South line	Feet from the	East/West line	County
⁹ Proposed Pool 1 WILDCAT					¹⁰ Proposed Pool 2				

¹¹ Work Type Code N	¹² Well Type Code O	¹³ Cable/Rotary R	¹⁴ Lease Type Code P	¹⁵ Ground Level Elevation 3,607'
¹⁶ Multiple No	¹⁷ Proposed Depth 11,200'	¹⁸ Formation Ellenburger	¹⁹ Contractor Ziadril	²⁰ Spud Date 2-03-97

²¹ Proposed Casing and Cement Program

Hole Size	Casing Size	Casing weight/foot	Setting Depth	Sacks of Cement	Estimated TOC
17 1/2"	13 3/8"	54.5	450'	495	Surface
11"	8 5/8"	32	4,300'	1,005	Surface
7 7/8"	5 1/2"	17 & 20	11,200'	1,015	4,000'

²² Describe the proposed program. If this application is to DEEPEN or PLUG BACK give the data on the present productive zone and proposed new productive zone. Describe the blowout prevention program, if any. Use additional sheets if necessary.

Wildcat to test the Devonian/McKee formations.
Schematic of BOP to be used on Ziadril Rig attached.
H2S safety equipment to be installed on well @ 4,000' (Above Grayburg)

Permit Expires 1 Year From Approval
Date Unless Drilling Underway

²³ I hereby certify that the information given above is true and complete to the best of my knowledge and belief.

Signature:

Printed name:

Title:

Christopher P. Renaud

Vice President/Operations Mgr.

OIL CONSERVATION DIVISION

Approved by: ORIGINAL SIGNED BY JERRY SEXTON

Title:

Approval Date: JAN 16 1997

Expiration Date:

B



RIG 6 6,000' - 15,400'

P.O. Box 1860 • Hobbs, New Mexico 88241 • 505/397-3511 • 800/922-3745

DRAWWORKS

Skytop Brewster N75 1000 H.P.
Drum: 1 1/4" Lebus grooved
Compound: 3-engine oil bath chain drive
Brake: Hydromatic Parmac 232 Double
Satellite Automatic Driller
Duo-O-Matic Crown Block Protector
Totco Weight Indicator

ENGINES

Three 410-H.P. D353TA Caterpillar Diesel.

DERRICK

Tri-Star, 133' 550,000 lb. rated capacity.

SUBSTRUCTURE

Tri-Star 16' high 550,000 lb. rated capacity.

MUD PUMPS

Pump No. 1: Emsco DC700. 700-H.P. with steel fluid end.
4 3/4" - 7 3/4" liners, 16" stroke. Compound driven
Pump No. 2: Emsco DC700 powered by D379
Caterpillar Diesel.

DRILL STRING

3,000' 4 1/2" Grade E, 20-lb.
8,400' 4 1/2" Grade E, 16.60-lb.
4,000' Grade G, 16.60-lb.
Tool Joints: 4 1/2" XH, 6 1/4" OD.
Twenty-Seven drillcollars 6 1/2" OD, 2 1/4" ID.
Twenty-One 8" OD x 2 1/2" ID Drill Collars
Other sized drillpipe and drillcollars available.

BLOWOUT PREVENTERS

One Shaffer LWS hydraulic double 11" x 5,000 p.s.i. One
Shaffer 11" x 5,000 p.s.i. Choke manifold 4" x
5,000 p.s.i. flanged connections. Koomey 8-station
accumulator closing unit with remote control.

MUD SYSTEM

Three 30' x 7 1/2' x 6' steel pits with 700-bbl capacity and
one 250-bbl slug pit. Complete low pressure circulating
system, consisting of four submerged mud guns and two
countersunk jets in each pit. System utilizes a 6 x 8
centrifugal pump, powered by diesel.

MUD HOUSE

One 8' x 30' Steel Storage House.

COMMUNICATIONS

24-hour direct cellular telephone 505/370-4532

OTHER EQUIPMENT

BLOCKS. Oilwell 66 250 Ton

HOOK. BJ 4200 250 Ton

SWIVEL. National N-47 250 Ton

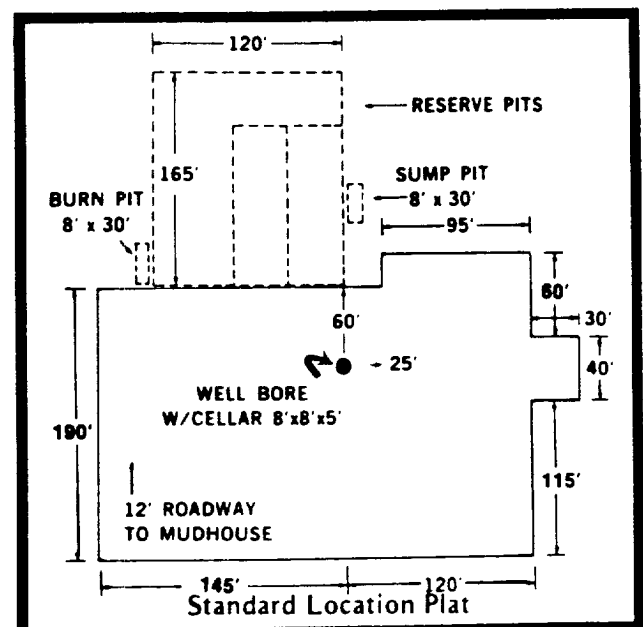
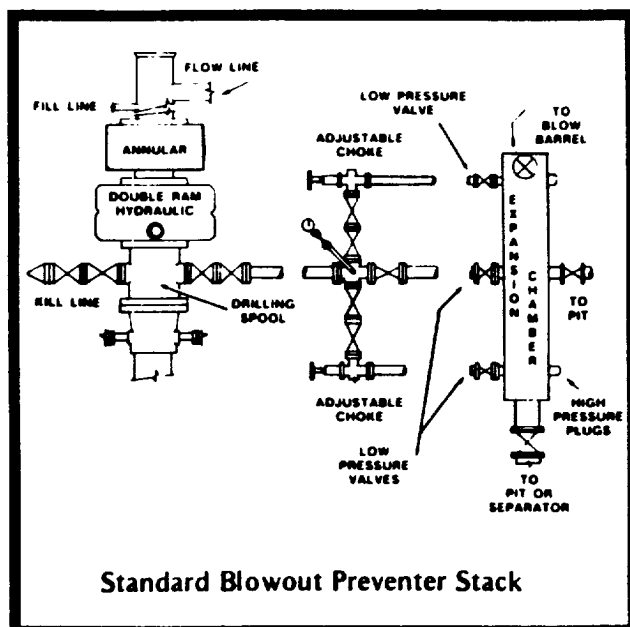
ROTARY TABLE. Oilwell 20 1/2"

SHALE SHAKER. Swaco or Derrick.

ELECTRICAL POWER. Two 135-kw AC Generators
powered by diesel engines. AC fluorescent or
mercury vapor lights. All vapor-proof.

FRESH WATER STORAGE. Two 500-bbl horizontal tanks.

HOUSING. One 10' x 44' refrigerated air-conditioned
house with sleeping and cooking facilities.



DISTRICT I
P.O. Box 1980, Hobbs, NM 88241-1980

State of New Mexico
Energy, Minerals and Natural Resources Department

Form C-102
Revised February 10, 1994
Submit to Appropriate District Office
State Lease - 4 Copies
Fee Lease - 3 Copies

DISTRICT II
P.O. Drawer DD, Artesia, NM 88211-0719

DISTRICT III
1000 Rio Brazos Rd., Aztec, NM 87410

DISTRICT IV
P.O. BOX 2088, SANTA FE, N.M. 87504-2088

OIL CONSERVATION DIVISION

P.O. Box 2088
Santa Fe, New Mexico 87504-2088

☐ AMENDED REPORT

WELL LOCATION AND ACREAGE DEDICATION PLAT

API Number 30-025-33780	Pool Code ✓	Pool Name Wildcat
Property Code 20153	Property Name McNeill 30	Well Number 1
OGRID No. 160620	Operator Name EnerQuest Resources, LLC	Elevation 3607'

Surface Location

UL or lot No.	Section	Township	Range	Lot Idn	Feet from the	North/South line	Feet from the	East/West line	County
P	30	19 S	38 E		467	SOUTH	990	EAST	LEA

Bottom Hole Location If Different From Surface

UL or lot No.	Section	Township	Range	Lot Idn	Feet from the	North/South line	Feet from the	East/West line	County
Dedicated Acres 40		Joint or Infill	Consolidation Code		Order No.				

NO ALLOWABLE WILL BE ASSIGNED TO THIS COMPLETION UNTIL ALL INTERESTS HAVE BEEN CONSOLIDATED
OR A NON-STANDARD UNIT HAS BEEN APPROVED BY THE DIVISION

LOT 1 40.68 AC.									
LOT 2 40.73 AC.									
LOT 3 40.70 AC.									
LOT 4 40.87 AC.									

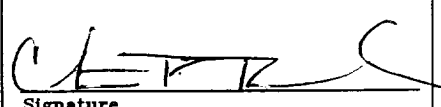
N=593068.256
E=854472.112
NAD 83
NEW MEXICO EAST

990'

467'

OPERATOR CERTIFICATION

I hereby certify the the information contained herein is true and complete to the best of my knowledge and belief.

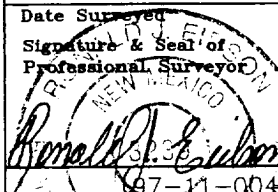

Signature
Christopher P. Renaud
Printed Name
Vice President/Oprtn Mgr
Title
1-13-97
Date

SURVEYOR CERTIFICATION

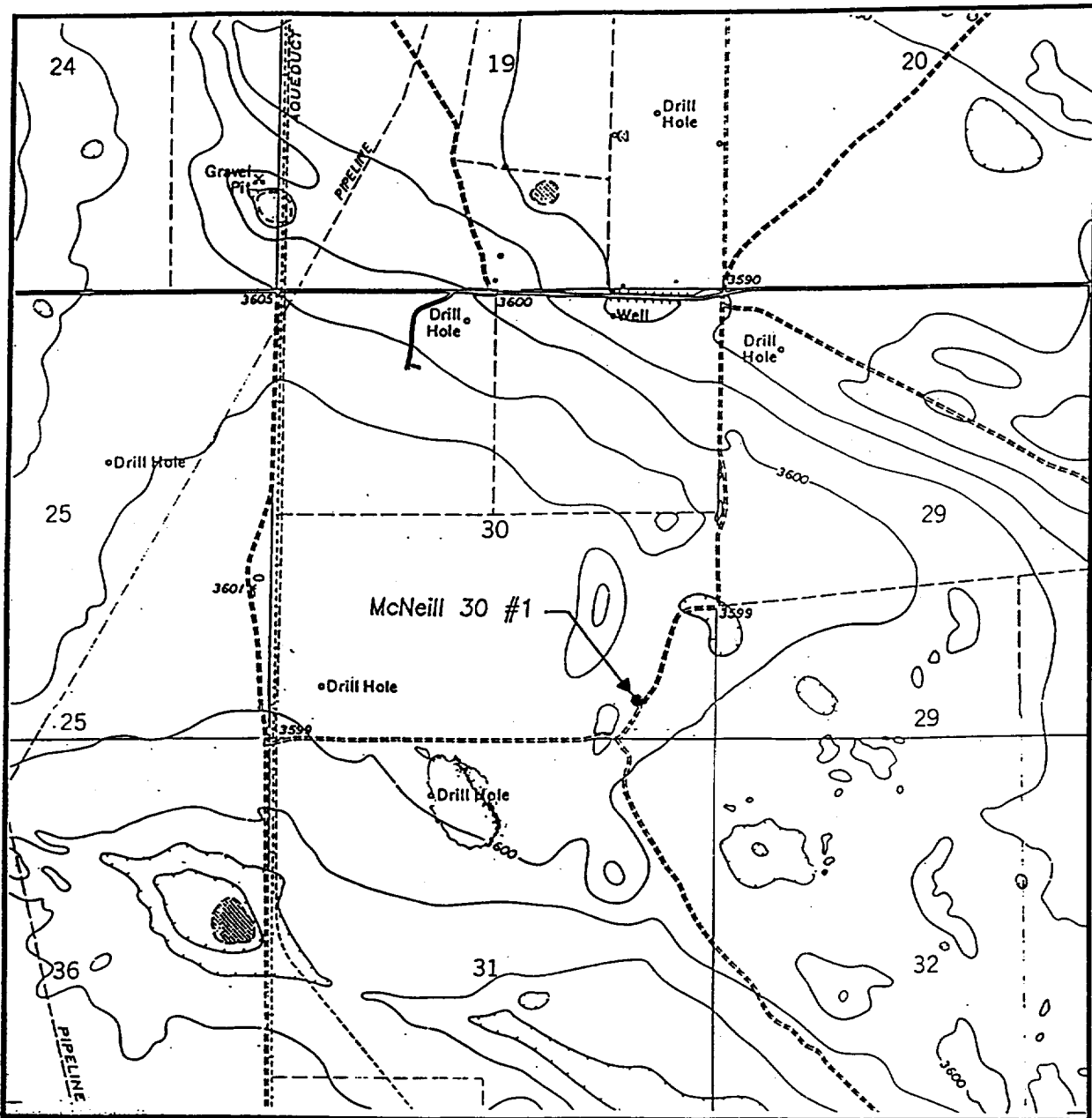
I hereby certify that the well location shown on this plat was plotted from field notes of actual surveys made by me or under my supervision, and that the same is true and correct to the best of my belief.

JANUARY 9, 1997

Date Surveyed CDG

Signature & Seal of Professional Surveyor

Certificate No. JOHN W. WEST 676
RONALD J. EDSON 3239
GARY EDSON 12641

LOCATION VERIFICATION MAP



SCALE: 1" = 2000'

CONTOUR INTERVAL - 5'

SEC. 30 TWP. 19-S RGE. 38-E

SURVEY N.M.P.M.

COUNTY LEA

DESCRIPTION 467' FSL & 990' FEL

ELEVATION 3607'

OPERATOR EnerQuest Resources, LLC

LEASE McNeill 30

U.S.G.S. TOPOGRAPHIC MAP

HOBBS SW, HOBBS W, NM

JOHN WEST ENGINEERING
HOBBS, NEW MEXICO
(505) 393-3117

117
8/28/97

