

# NEW MEXICO OIL CONSERVATION DIVISION

- Engineering Bureau -

## ADMINISTRATIVE APPLICATION COVERSHEET

THIS COVERSHEET IS MANDATORY FOR ALL ADMINISTRATIVE APPLICATIONS FOR EXCEPTIONS TO DIVISION RULES AND REGULATIONS

### Application Acronyms:

[NSP-Non-Standard Proration Unit] [NSL-Non-Standard Location]  
 [DD-Directional Drilling] [SD-Simultaneous Dedication]  
 [DHC-Downhole Commingling] [CTB-Lease Commingling] [PLC-Pool/Lease Commingling]  
 [PC-Pool Commingling] [OLS - Off-Lease Storage] [OLM-Off-Lease Measurement]  
 [WFX-Waterflood Expansion] [PMX-Pressure Maintenance Expansion]  
 [SWD-Salt Water Disposal] [IPI-Injection Pressure Increase]  
 [EOR-Qualified Enhanced Oil Recovery Certification] [PPR-Positive Production Response]

### [1] TYPE OF APPLICATION - Check Those Which Apply for [A]

[A] Location - Spacing Unit - Directional Drilling  
☐ NSL ☐ NSP ☐ DD ☐ SD

Check One Only for [B] or [C]

[B] Commingling - Storage - Measurement  
☐ DHC ☒ CTB ☐ PLC ☐ PC ☐ OLS ☐ OLM

[C] Injection - Disposal - Pressure Increase - Enhanced Oil Recovery  
☐ WFX ☐ PMX ☐ SWD ☐ IPI ☐ EOR ☐ PPR

### [2] NOTIFICATION REQUIRED TO: - Check Those Which Apply, or ☐ Does Not Apply

[A] ☒ Working, Royalty or Overriding Royalty Interest Owners

[B] ☐ Offset Operators, Leaseholders or Surface Owner

[C] ☐ Application is One Which Requires Published Legal Notice

[D] ☒ Notification and/or Concurrent Approval by BLM or SLO  
 U.S. Bureau of Land Management - Commissioner of Public Lands, State Land Office

[E] ☒ For all of the above, Proof of Notification or Publication is Attached, and/or,

[F] ☒ Waivers are Attached

### [3] INFORMATION / DATA SUBMITTED IS COMPLETE - Statement of Understanding

I hereby certify that I, or personnel under my supervision, have read and complied with all applicable Rules and Regulations of the Oil Conservation Division. Further, I assert that the attached application for administrative approval is accurate and complete to the best of my knowledge and where applicable, verify that all interest (WI, RI, ORRI) is common. I further verify that all applicable API Numbers are included. I understand that any omission of data, information or notification is cause to have the application package returned with no action taken.

Note: Statement must be completed by an individual with supervisory capacity.

Britton McQuien

Print or Type Name

Britton McQuien

Signature

Engineer

Title

6/3/97

Date





June 3, 1997

New Mexico Oil Conservation Division  
1000 W. Broadway  
Hobbs, New Mexico 88240

Attn: Mr. Chris Williams

Re: Off-Lease Storage and Surface Commingling Permit Application  
New Mexico "E" State NCT-2 Lease  
William Weir Lease  
Common Tank Battery located in  
Unit Letter K, Section 23, T-19-S, R-36-E  
Lea County, New Mexico

Gentlemen:

Texaco Exploration and Production Inc. respectfully requests administrative approval for off-lease storage and surface commingling of production on the above leases. Waivers have been sent to the royalty interest owners in the William Weir Lease and to the New Mexico State Land Office in the New Mexico "E" State NCT-2 Lease.

Three wells will be produced into this common facility. Currently, the New Mexico "E" State NCT-2 #1 well is producing, and the William Weir #6 and the New Mexico "E" State NCT-2 #2 wells will be drilled and completed in the summer 1997. All three wells are expected to produce from the Monument Abo Pool.

Included in this application package is a diagram and description of the facilities, lease plats, and a lease diagram. In addition, all waivers received are included. If you have any questions or comments, please contact Britton McQuien at (505) 397-0427.

Sincerely,

Britton McQuien  
Engineer  
Texaco E&P, Inc.  
Hobbs OU

cc: Mr. William J. Lemay

enc

DISTRICT I  
P. O. Box 1980, Hobbs, NM 88240

DISTRICT II  
P. O. Drawer DD, Artesia, NM 88210

DISTRICT III  
1000 Rio Brazos Rd., Artec, NM 87410

DISTRICT IV  
P. O. Box 2088, Santa Fe, NM 87504-2088

State of New Mexico  
Energy, Minerals and Natural Resources Department

OIL CONSERVATION DIVISION  
PO Box 2088  
Santa Fe, NM 87504-2088

Form C-102  
Revised February 10, 1994

Instructions on back

Submit to Appropriate District Office

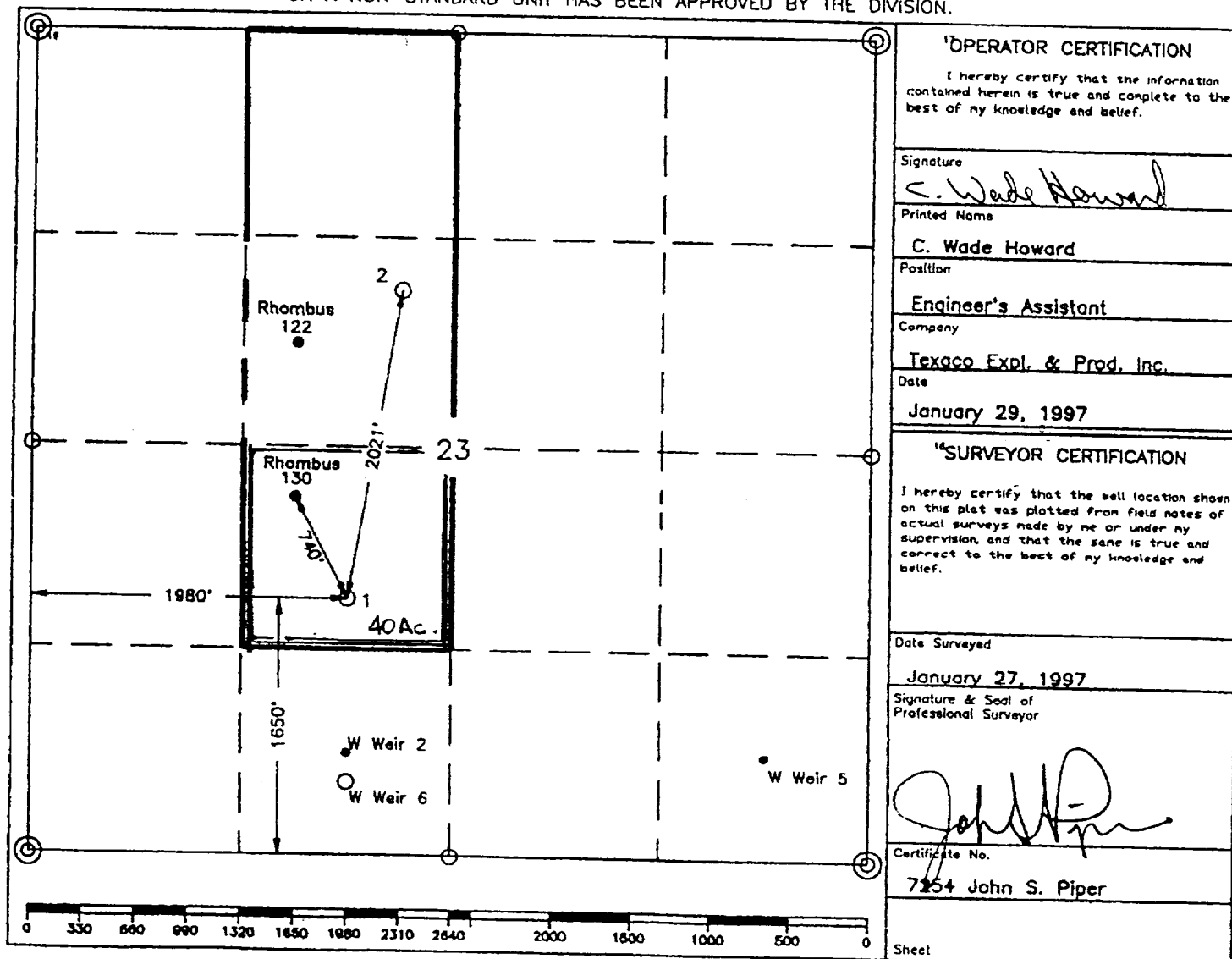
State Lease-4 copies  
Fee Lease-3 copies

WELL LOCATION AND ACREAGE DEDICATION PLAT

☐ AMENDED REPORT

API Number 30-025-33814		Pool Code 46970		Pool Name Monument ABO					
Property Code 20361		Property Name New Mexico "E" State NCT-2				Well Number 1			
GRID No. 22351		Operator Name TEXACO EXPLORATION & PRODUCTION, INC.				Elevation 3729'			
Surface Location									
UL or lot no. K	Section 23	Township 19-S	Range 36-E	Lot Idn	Feet from the 1650'	North/South line South	Feet from the 1980'	East/West line West	County Lea
Bottom Hole Location If Different From Surface									
UL or lot no.	Section	Township	Range	Lot Idn	Feet from the	North/South line	Feet from the	East/West line	County
Dedicated Acres 40		Joint or Infill		Consolidation Code		Order No.			

NO ALLOWABLE WILL BE ASSIGNED TO THIS COMPLETION UNTIL ALL INTERESTS HAVE BEEN CONSOLIDATED  
OR A NON-STANDARD UNIT HAS BEEN APPROVED BY THE DIVISION.



○ = Staked Location • = Producing Well = Injection Well = Water Supply Well = Blended & Abandoned Well

DISTRICT I  
P. O. Box 1980, Hobbs, NM 88240

DISTRICT II  
P. O. Drawer DD, Artesia, NM 88210

DISTRICT III  
1000 Rio Brazos Rd., Aztec, NM 87410

DISTRICT IV  
P. O. Box 2088, Santa Fe, NM 87504-2088

State of New Mexico  
Energy, Minerals and Natural Resources Department

OIL CONSERVATION DIVISION

PO Box 2088  
Santa Fe, NM 87504-2088

Form C-102  
Revised February 10, 1994

Instructions on back

Submit to Appropriate District Office

State Lease-4 copies  
Fee Lease-3 copies

☐ AMENDED REPORT

WELL LOCATION AND ACREAGE DEDICATION PLAT

<sup>1</sup> API Number		<sup>2</sup> Pool Code		<sup>3</sup> Pool Name Monument ABO	
<sup>4</sup> Property Code 11135		<sup>5</sup> Property Name William Weir			<sup>6</sup> Well Number 6
<sup>7</sup> GRID No. 22351		<sup>8</sup> Operator Name TEXACO EXPLORATION & PRODUCTION, INC.			<sup>9</sup> Elevation 3701'

<sup>10</sup> Surface Location									
UL or lot no. N	Section 23	Township 19-S	Range 36-E	Lot Idn	Feet from the 425'	North/South line South	Feet from the 1830'	East/West line West	County Lea

<sup>11</sup> Bottom Hole Location If Different From Surface									
UL or lot no.	Section	Township	Range	Lot Idn	Feet from the	North/South line	Feet from the	East/West line	County
<sup>12</sup> Dedicated Acres 40		<sup>13</sup> Joint or Infill		<sup>14</sup> Consolidation Code		<sup>15</sup> Order No.			

NO ALLOWABLE WILL BE ASSIGNED TO THIS COMPLETION UNTIL ALL INTERESTS HAVE BEEN CONSOLIDATED  
OR A NON-STANDARD UNIT HAS BEEN APPROVED BY THE DIVISION.

	<b><sup>16</sup>OPERATOR CERTIFICATION</b> I hereby certify that the information contained herein is true and complete to the best of my knowledge and belief.
	Signature <i>C. Wade Howard</i>
	Printed Name C. Wade Howard
	Position Engineer's Assistant
	Company Texaco Expl. & Prod. Inc.
	Date April 11, 1997
	<b><sup>17</sup>SURVEYOR CERTIFICATION</b> I hereby certify that the well location shown on this plat was plotted from field notes of actual surveys made by me or under my supervision, and that the same is true and correct to the best of my knowledge and belief.
	Date Surveyed April 8, 1997
	Signature & Seal of Professional Surveyor <i>John S. Piper</i>
	Certificate No. 7254 John S. Piper

Sheet

○ = Staked Location • = Producing Well = Injection Well ⊕ = Water Supply Well ⊛ = Plugged & Abandon Well  
⊙ = Found Section Corner 2 or 3" Iron Pipe & G.L.O.B.C. ⊖ = Found 1/4 Section Corner 1" Iron Pipe & G.L.O.B.C.

Facility Process Description  
New Mexico "E" State NCT-2 Tank Battery

Wells to be commingled in this facility:

New Mexico "E" NCT 2 Well No. 1

New Mexico "E" NCT 2 Well No. 2

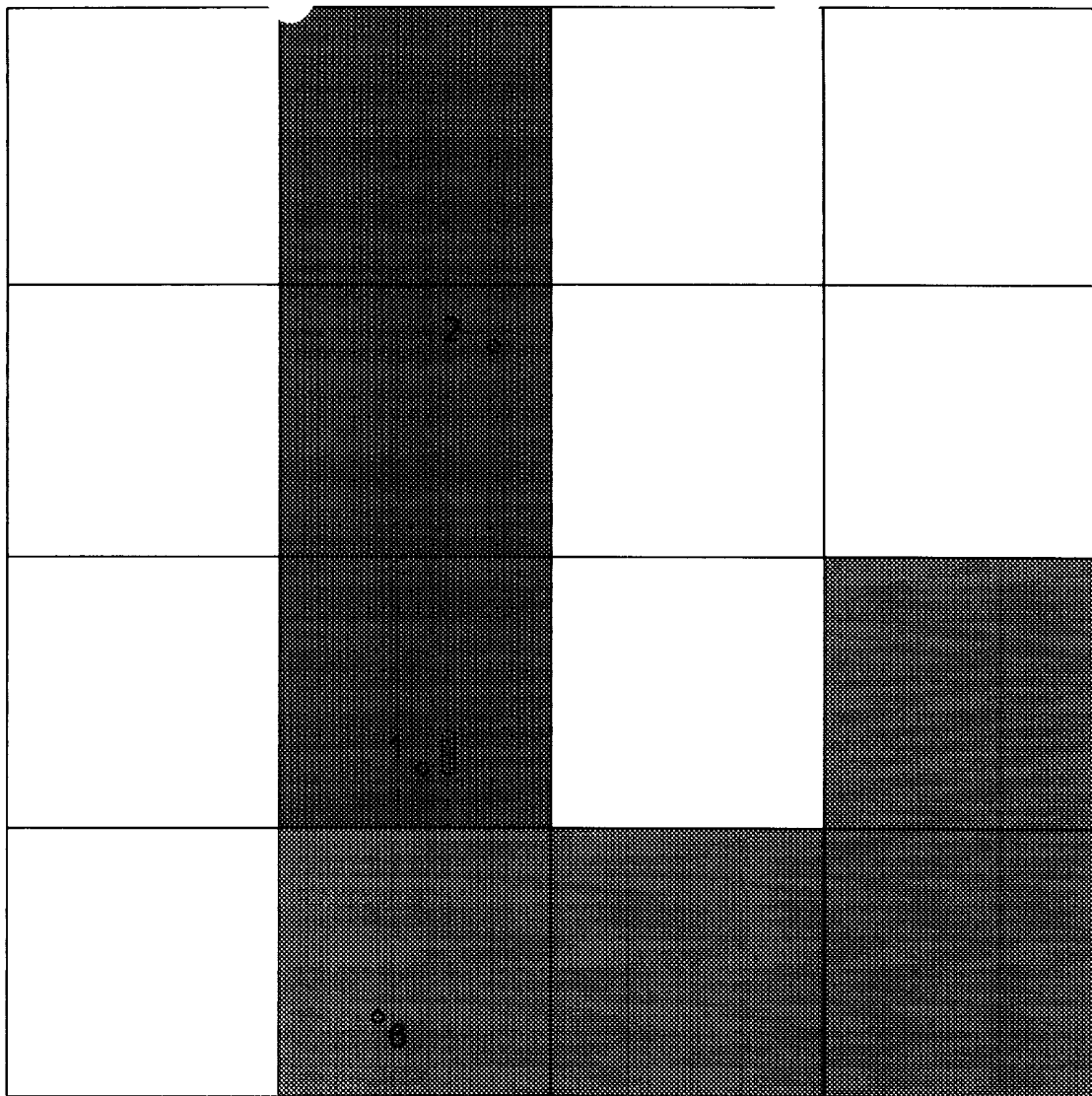
William Weir Well No. 6

There will be 2 (two) three phase production separators and each lease will produce into a specific separator. These separators will have oil, gas, and water meters. There will be a proving loop on each oil meter so that periodic meter proving tests can be performed and the meters calibrated. All hydrocarbon streams will be measured before any commingling occurs. Meters will have non resettable counters.

There will also be a three phase test separator for the New Mexico "E" NCT-2 lease. This separator will be set up in the same manner as the production vessels. Total production for the New Mexico "E" NCT-2 lease will be calculated by adding the New Mexico "E" NCT-2 production separator meters and test separator meters.

Fluids streams will be commingled after being metered and go to a heater treater where oil and water separation will occur. Oil will be dumped into stock tanks and held there until be trucked off by the oil transporter. Water will be dumped into a holding tank and will be trucked off for disposal.

Gas streams will be commingled after being metered and will pass through a two phase scrubber separator to ensure that in case of an upset no fluids will be sent down the gas sales line. There will be one common gas sales meter and production will be split according to separator gas meter readings.

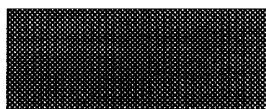


Sec 23 T-19-S, R-36-E

Lea County, New Mexico



William Weir Lease



New Mexico "E" NCT-2 Lease



Tank Battery





Texaco Exploration & Production Inc.  
NEW MEXICO "E" STATE NCT-2  
Lot K, Sec 23, T-19-S, R-38-E  
Lea County, New Mexico

