

DISTRICT I
P.O. Box 1980, Hobbs, NM 88241-1980

DISTRICT II
P.O. Drawer DD, Artesia, NM 88211-0719

DISTRICT III
1000 Rio Brazos Rd., Aztec, NM 87410

DISTRICT IV
P.O. Box 2088, Santa Fe, NM 87504-2088

State of New Mexico

Energy, Minerals and Natural Resources Department

Form C-102
Revised February 10, 1994
Submit to Appropriate District Office
State Lease - 4 Copies
Fee Lease - 3 Copies

OIL CONSERVATION DIVISION

P.O. Box 2088
Santa Fe, New Mexico 87504-2088

☐ AMENDED REPORT

WELL LOCATION AND ACREAGE DEDICATION PLAT

API Number 30-025-33820	Pool Code 46980 46970	Pool Name MONUMENT; ABO, NORTH
Property Code 20396	Property Name WEIR "B"	Well Number 2
OGRID No. 4323	Operator Name CHEVRON U.S.A. INC.	Elevation 3666

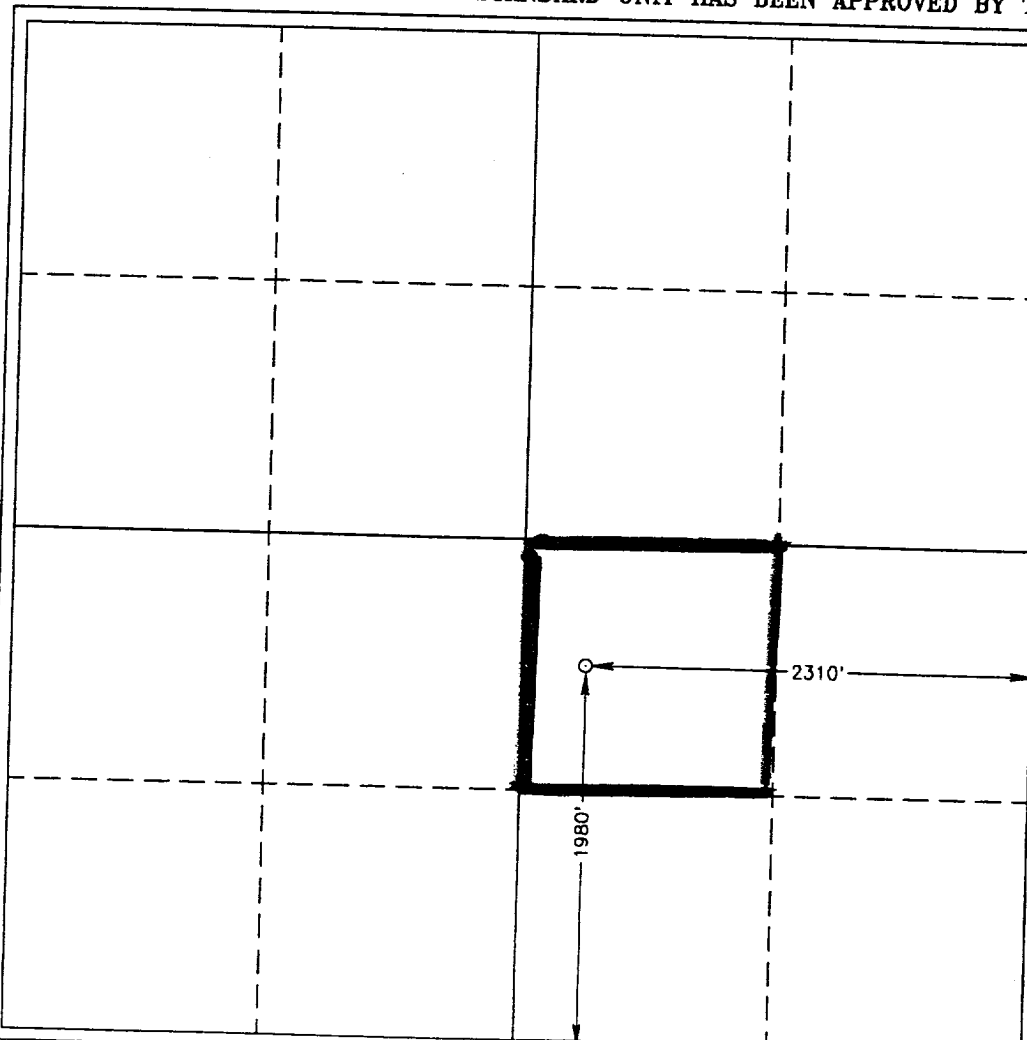
Surface Location

UL or lot No. J	Section 26	Township 19 S	Range 36 E	Lot Idn	Feet from the 1980	North/South line SOUTH	Feet from the 2310	East/West line EAST	County LEA
---------------------------	----------------------	-------------------------	----------------------	---------	------------------------------	----------------------------------	------------------------------	-------------------------------	----------------------

Bottom Hole Location If Different From Surface

UL or lot No.	Section	Township	Range	Lot Idn	Feet from the	North/South line	Feet from the	East/West line	County
Dedicated Acres 40	Joint or Infill	Consolidation Code	Order No.						

NO ALLOWABLE WILL BE ASSIGNED TO THIS COMPLETION UNTIL ALL INTERESTS HAVE BEEN CONSOLIDATED
OR A NON-STANDARD UNIT HAS BEEN APPROVED BY THE DIVISION



OPERATOR CERTIFICATION

I hereby certify the information contained herein is true and complete to the best of my knowledge and belief.

J. K. Ripley
Signature

J. K. RIPLEY
Printed Name

T.A.
Title

2/3/97
Date

Date

SURVEYOR CERTIFICATION

I hereby certify that the well location shown on this plat was plotted from field notes of actual surveys made by me or under my supervision, and that the same is true and correct to the best of my belief.

JANUARY 21, 1997

Date Surveyed **JLP**

Signature & Seal of Professional Surveyor

Ronald J. Eidson
Professional Surveyor
W.O. Num. **97-1140113**

Certificate No. **JOHN W. WEST, 676**
RONALD J. EIDSON, 3239
GARY G. EIDSON, 12641