

District I
PO Box 1980, Hobbs, NM 88241-1980
District II
811 S. 1st Street, Artesia, NM 88210-2834
District III
1000 Rio Brazos Rd., Aztec, NM 87410
District IV
PO Box 2088, Santa Fe, NM 87504-2088

State of New Mexico
Energy, Minerals & Natural Resources Department

OIL CONSERVATION DIVISION
P.O. Box 2088
Santa Fe, NM 87504-2088

Form C-101
Revised February 10, 1994
Instructions on back
Submit to Appropriate District Office
State Lease - 6 Copies
Fee Lease - 5 Copies

☐ AMENDED REPORT

APPLICATION FOR PERMIT TO DRILL, RE-ENTER, DEEPEN, PLUGBACK, OR ADD A ZONE

¹ Operator name and Address Chevron U.S.A. Inc. P.O. Box 1150 Midland, TX 79702		² OGRID Number 4323
⁴ Property Code 20070		³ API Number 30-025-34087
⁵ Property Name MONUMENT "23" STATE		⁶ Well Number 13

⁷ Surface Location									
UL or lot no.	Section	Township	Range	Lot. Idn	Feet from the	North/South Line	Feet from the	East/West line	County
J	23	19S	36E		1688	SOUTH	2107	EAST	LEA

⁸ Proposed Bottom Hole Location If Different From Surface									
UL or lot no.	Section	Township	Range	Lot. Idn	Feet from the	North/South Line	Feet from the	East/West line	County
⁹ Proposed Pool 1 MONUMENT; ABO, NORTH 46980					¹⁰ Proposed Pool 2				

¹¹ Work Type Code N	¹² Well Type Code O	¹³ Cable/Rotary ROTARY	¹⁴ Lease Type Code S	¹⁵ Ground Level Elevation 3698'
¹⁶ Multiple NO	¹⁷ Proposed Depth 7600'	¹⁸ Formations ABO	¹⁹ Contractor UNKNOWN	²⁰ Spud Date 8/18/97

²¹ Proposed Casing and Cement Program					
Hole Size	Casing Size	Casing weight/foot	Setting Depth	Sacks of Cement	Estimated TOC
11"	8-5/8"	24	1325'	400	SURFACE
7-7/8"	5-1/2"	15.5	7600'	850	1175'

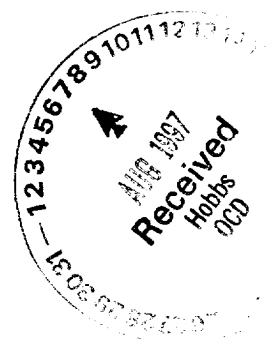
²² Describe the proposed program. If this application is to DEEPEN or PLUG BACK give the data on the present productive zone and proposed new productive zone. Describe the blowout prevention program, if any. Use additional sheets if necessary.

CHEVRON PROPOSES TO:
DRILL WITH BIT TO 1325', RUN 8-5/8" CSG. CMT WITH CL "C" TO SURFACE.
DRILL WITH BIT TO 7600', RUN 5-7/12" CSG. CMT WITH CL "C".

MUD PROGRAM: 0'-1325', FRESH WATER 8.4 PPG
1325'-7600', CUT BRINE WATER 8.8 PPG

Permit Expires 1 Year From Approval
Date Unless Drilling Underway

²³ I hereby certify that the information given above is true and complete to the best of my knowledge and belief. Signature: <i>J. K. Ripley</i> Printed name: J. K. RIPLEY Title: TECHNICAL ASSISTANT Date: 8/6/97		OIL CONSERVATION DIVISION Approved by: ORIGINAL SIGNED BY CHRIS WILLIAMS Title: DISTRICT I SUPERVISOR Approval Date: AUG 08 1997 Expiration Date: Conditions of Approval: Attached <input type="checkbox"/>	
--	--	--	--



DISTRICT I
P.O. Box 1980, Hobbs, NM 88241-1980

State of New Mexico

Energy, Minerals and Natural Resources Department

Form C-102
Revised February 10, 1994
Submit to Appropriate District Office
State Lease - 4 Copies
Fee Lease - 3 Copies

DISTRICT II
P.O. Box 1980, Hobbs, NM 88241-1980

DISTRICT III
1000 Rio Brazos Rd., Aztec, NM 87410

DISTRICT IV
P.O. Box 2088, Santa Fe, N.M. 87504-2088

OIL CONSERVATION DIVISION

P.O. Box 2088
Santa Fe, New Mexico 87504-2088

☐ AMENDED REPORT

WELL LOCATION AND ACREAGE DEDICATION PLAT

API Number 30-025-34087	Pool Code 46980	Pool Name Monument; Abo, North
Property Code 20070	Property Name MONUMENT "23" STATE	Well Number 13
OGRID No. 4323	Operator Name CHEVRON U.S.A. PRODUCTION COMPANY	Elevation 3698

Surface Location

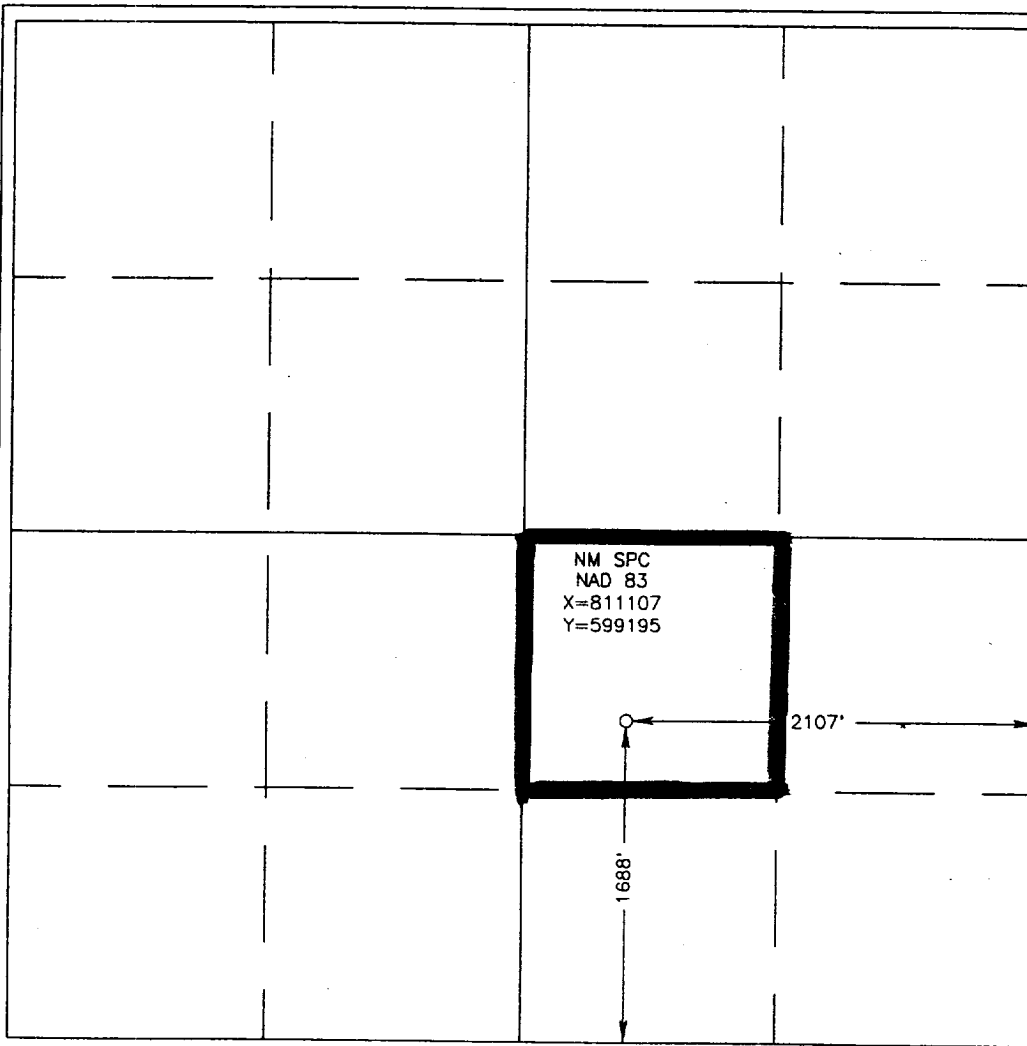
UL or lot No. J	Section 23	Township 19 S	Range 36 E	Lot Idn	Feet from the 1688	North/South line SOUTH	Feet from the 2107	East/West line EAST	County LEA
--------------------	---------------	------------------	---------------	---------	-----------------------	---------------------------	-----------------------	------------------------	---------------

Bottom Hole Location If Different From Surface

UL or lot No.	Section	Township	Range	Lot Idn	Feet from the	North/South line	Feet from the	East/West line	County
---------------	---------	----------	-------	---------	---------------	------------------	---------------	----------------	--------

Dedicated Acres 40	Joint or Infill	Consolidation Code	Order No.
-----------------------	-----------------	--------------------	-----------

NO ALLOWABLE WILL BE ASSIGNED TO THIS COMPLETION UNTIL ALL INTERESTS HAVE BEEN CONSOLIDATED
OR A NON-STANDARD UNIT HAS BEEN APPROVED BY THE DIVISION



OPERATOR CERTIFICATION

I hereby certify the the information contained herein is true and complete to the best of my knowledge and belief.

J.K. Ripley
Signature

J. K. Ripley
Printed Name

T.A.
Title

8/6/97
Date

SURVEYOR CERTIFICATION

I hereby certify that the well location shown on this plat was plotted from field notes of actual surveys made by me or under my supervision, and that the same is true and correct to the best of my belief.

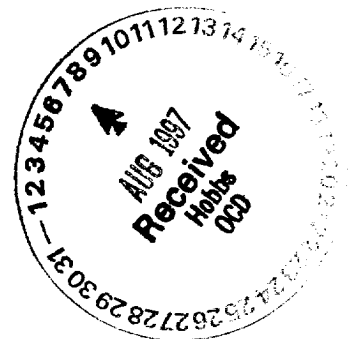
JULY 29, 1997

Date Surveyed DMCC

Signature & Seal of Professional Surveyor

Ronald J. Eidson
RONALD J. EIDSON
7-30-97
8-11-1270

Certificate No. JOHN W. WEST 676
RONALD J. EIDSON 3239
CARY EIDSON 12641



2



**JOHN WEST ENGINEERING
HOBBS, NEW MEXICO
(505) 393-3117**



2



CONTOUR INTERVAL:
MONUMENT NORTH - 10'
WITH 5' SUPPL.

MONUMENT NORTH, N.M.

(505) 393-3117



**TYPE 2-BLOWOUT PREVENTER SPECIFICATIONS
3M @ 5M WORKING PRESSURE**

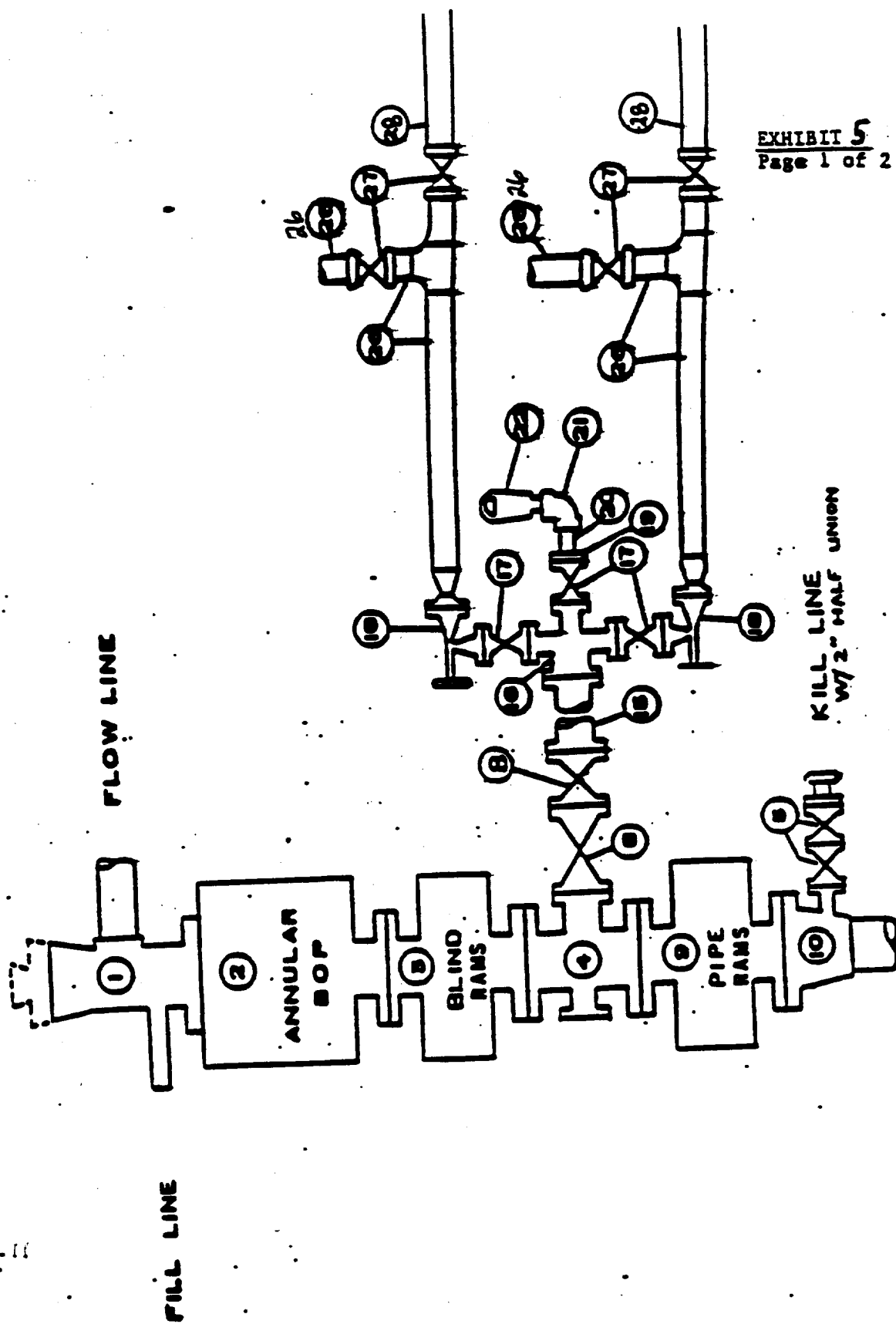


EXHIBIT 5
Page 1 of 2

2/6/97

6/1/97