

District I
PO Box 1980, Hobbs, NM 88241-1980

District II
811 South First, Artesia, NM 88210

District III
1000 Rio Brazos Rd., Aztec, NM 87410

District IV
2040 South Pacheco, Santa Fe, NM 87505

State of New Mexico
Energy, Minerals & Natural Resources Department

OIL CONSERVATION DIVISION
2040 South Pacheco
Santa Fe, NM 87505

Form C-101

Revised October 18, 1994

Instructions on back

Submit to Appropriate District Office

State Lease - 6 Copies

Fee Lease - 5 Copies

☐ AMENDED REPORT

APPLICATION FOR PERMIT TO DRILL, RE-ENTER, DEEPEN, PLUGBACK, OR ADD A ZONE

Operator Name and Address Matador Operating Company 8340 Meadow Road #158 Dallas, TX 75231		GRID Number 014245
Property Code 006602		API Number 30-025-34247
Lea AQ State		Well No. 11

Permit Expires 1 Year From Approved
Date Unless Drilling Underway

Surface Location

UL or lot no.	Section	Township	Range	Lot Idn	Feet from the	North/South line	Feet from the	East/West Line	County
M	29	19S	35E		990	South	990	West	Lea

Proposed Bottom Hole Location If Different From Surface

UL or lot no.	Section	Township	Range	Lot Idn	Feet from the	North/South line	Feet from the	East/West Line	County
Proposed Pool 1 Pearl San Andres, West					Proposed Pool 2				

Work Type Code N	Well Type Code O	Cable/Rotary Rotary	Lease Type Code S	Ground Level Elevation 3742'
Multiple No	Proposed Depth 6050'	Formation San Andres	Contractor Key Energy	Spud Date 1-7-98

Proposed Casing and Cement Program

Hole Size	Casing Size	Casing weight/foot	Setting Depth	Sacks of Cement	Estimated TOC
12-1/4	8-5/8	24#	425	165 sx	Surface
7-7/8	5-1/2	15.5#	6050	800 sx	Surface

Describe the proposed program. If this application is to DEEPEN or PLUG BACK give the data on the present productive zone and proposed new productive zone. Describe the blowout prevention program, if any. Use additional sheets if necessary.

Drill 6050' San Andres test. Drill 12-1/4" hole to 425' and run 8-5/8" casing. Circulate cement to surface. NU double ram BOP and test to 1000 psi. Drill 7-7/8" hole to TD of 6050'. Log well and run 5-1/2" casing and cement to surface.

Production allowable will be shared with Lea AQ State #8.

I hereby certify that the information given above is true and complete to the best of my knowledge and belief.

Signature:

Printed name:

John Bell

Title:

Drilling Manager

Date:

Phone:

214-987-7130

OIL CONSERVATION DIVISION

Approved By:

ORIGINAL SIGNED BY CHRIS WILLIAMS

Title:

DISTRICT I SUPERVISOR

Approval Date:

09-09-98

Expiration Date:

Conditions of Approval:

Attached: ☐

DISTRICT I
P. O. Box 1980
Hobbs, NM 88241-1980

State of New Mexico
Energy, Minerals, and Natural Resources Department

Form C-102
Revised 02-10-94
Instructions on back

DISTRICT II
P. O. Drawer DD
Artesia, NM 88211-0719

OIL CONSERVATION DIVISION
P. O. Box 2088
Santa Fe, New Mexico 87504-2088

Submit to the Appropriate
District Office
State Lease - 4 copies
Fee Lease - 3 copies

DISTRICT III
1000 Rio Brazos Rd.
Aztec, NM 87410

☐ AMENDED REPORT

DISTRICT IV
P. O. Box 2088
Santa Fe, NM 87507-2088

WELL LOCATION AND ACREAGE DEDICATION PLAT

¹ API Number 30-025-34247	² Pool Code 49820	³ Pool Name Pearl San Andres, West
⁴ Property Code 006602	⁵ Property Name LEA AQ STATE	⁶ Well Number 11
⁷ OGRID No. 014245	⁸ Operator Name MATADOR OPERATING COMPANY	⁹ Elevation 3742'

¹⁰ SURFACE LOCATION

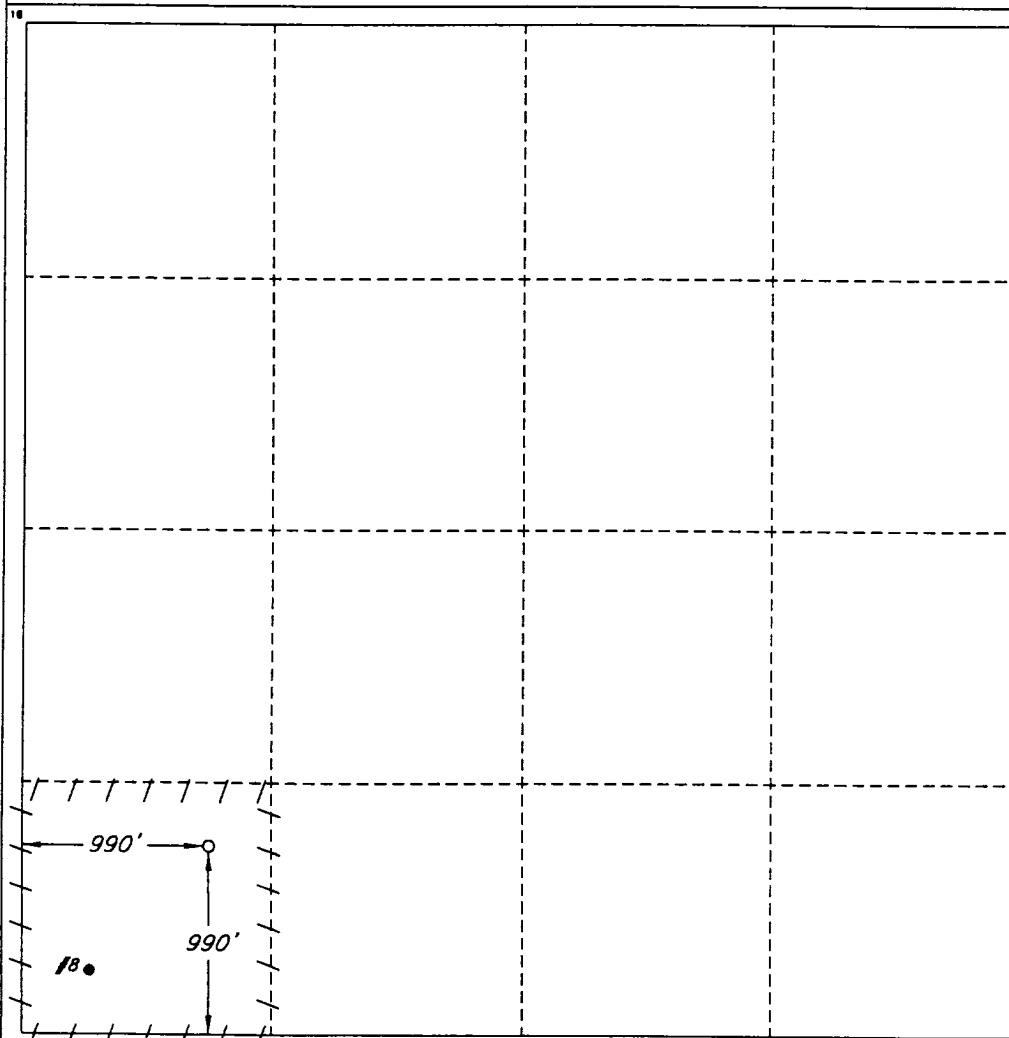
UL or lot no.	Section	Township	Range	Lot Ida	Feet from the	North/South line	Feet from the	East/West line	County
M	29	19 SOUTH	35 EAST, N.M.P.M.		990'	SOUTH	990'	WEST	LEA

¹¹ BOTTOM HOLE LOCATION IF DIFFERENT FROM SURFACE

UL or lot no.	Section	Township	Range	Lot Ida	Feet from the	North/South line	Feet from the	East/West line	County

¹² Dedicated Acres 40	¹³ Joint or Infill	¹⁴ Consolidation Code	¹⁵ Order No.
-------------------------------------	-------------------------------	----------------------------------	-------------------------

NO ALLOWABLE WELL BE ASSIGNED TO THIS COMPLETION UNTIL ALL INTERESTS HAVE BEEN
CONSOLIDATED OR A NON-STANDARD UNIT HAS BEEN APPROVED BY THE DIVISION



OPERATOR CERTIFICATION

I hereby certify that the information
contained herein is true and complete
to the best of my knowledge and belief.

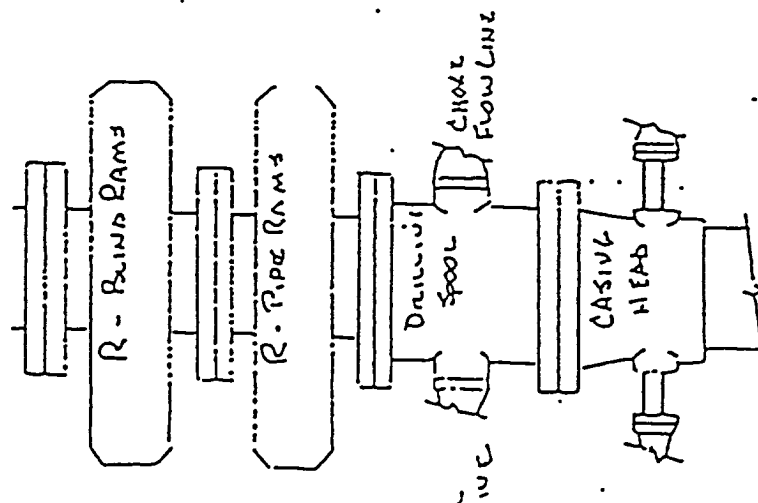
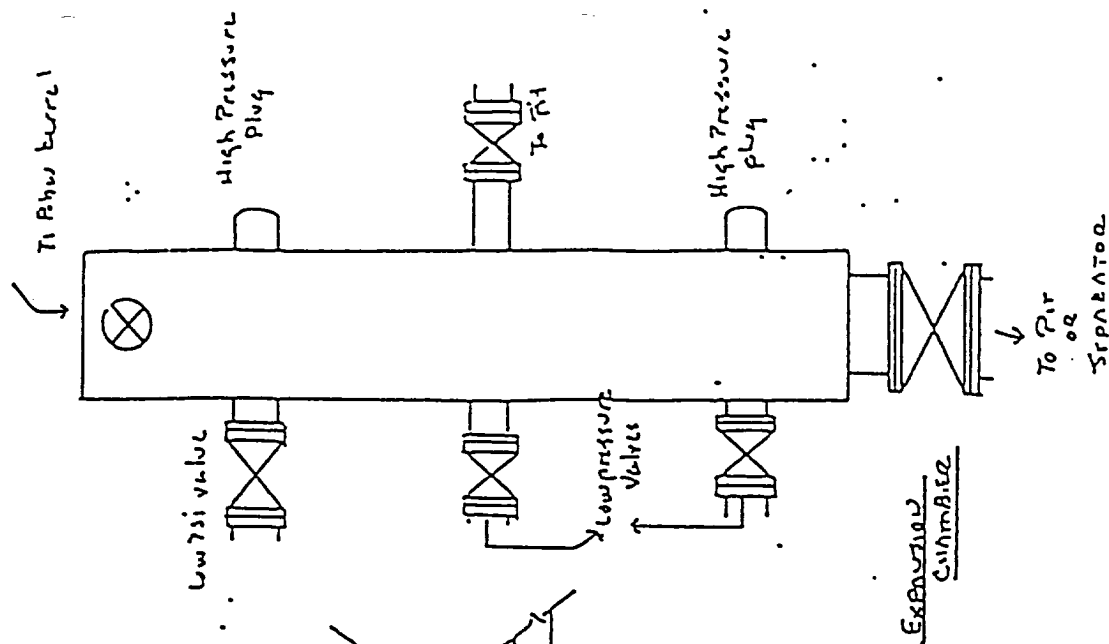
Signature <i>John W. Bell</i>
Printed Name John W. Bell
Title Drilling Manager
Date 1-5-98

SURVEYOR CERTIFICATION

I hereby certify that the well
location shown on this plat was
plotted from field notes of actual
surveys made by me or under
my supervision, and that the
same is true and correct to the
best of my belief.

Date of Survey DECEMBER 29, 1997
Signature and Seal of Professional Surveyor <i>Roger M. Robbins</i> REGISTERED PROFESSIONAL SURVEYOR 12123
Certificate No. ROGER M. ROBBINS P.S. #12128
JOR #56005 / 71 NW / V H R

**Blowout Preventer
Matador Operating Company
Lea AQ State #11
990 FSL; 990 FWL
Sec 29-19S-35E
Lea County, New Mexico**



500 PSI
WORKING PRESSURE

MATADOR PETROLEUM CORPORATION

SUITE 158, PECAN CREEK
8340 MEADOW ROAD
DALLAS, TEXAS 75231-3751
(214) 987-3650
FAX: (214) 691-1415

December 30, 1997

Michael Stogner
Oil Conservation Division
2040 South Pacheco
Santa Fe, New Mexico 87505

VIA FAX & MAIL

Re: Lea AQ State #11
990 FSL; 990 FWL
Unit M, Sec 29-19S-35E
Lea County, New Mexico

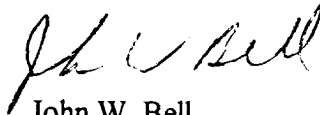
Dear Mr. Stogner:

Matador is requesting permission to drill a 6050' development well on the location referenced above. There is an existing San Andres completion in this 40 acre quadrant. The Lea AQ State #8 is located 330' FSL & 330' FWL of Section 29. Matador requests a Simultaneous Dedication of these two wells for the 40 acre tract. Should both wells be productive, they would share the allowable assigned for the acreage. The current allowable is 107 BOPD with the #8 well producing 50 BOPD leaving sufficient allowable to satisfy the projected deliverability of the new well.

Copies of the C-102's for both wells are attached. Because of rig availability, Matador would like to be able to spud the new well by January 6th. For this reason, we have faxed this request at this time. The original documents will be mailed to your attention as soon as they are available.

If you require any more information, please call me at (214) 987-7144.

Very truly yours,



John W. Bell
Drilling Manager

Attachments

DISTRICT II
P. O. Drawer DD
Artesia, NM 88211-0719

DISTRICT III
1000 Rio Brazos Rd.
Aztec, NM 87410

DISTRICT IV
P. O. Box 2088
Santa Fe, NM 87507-2088

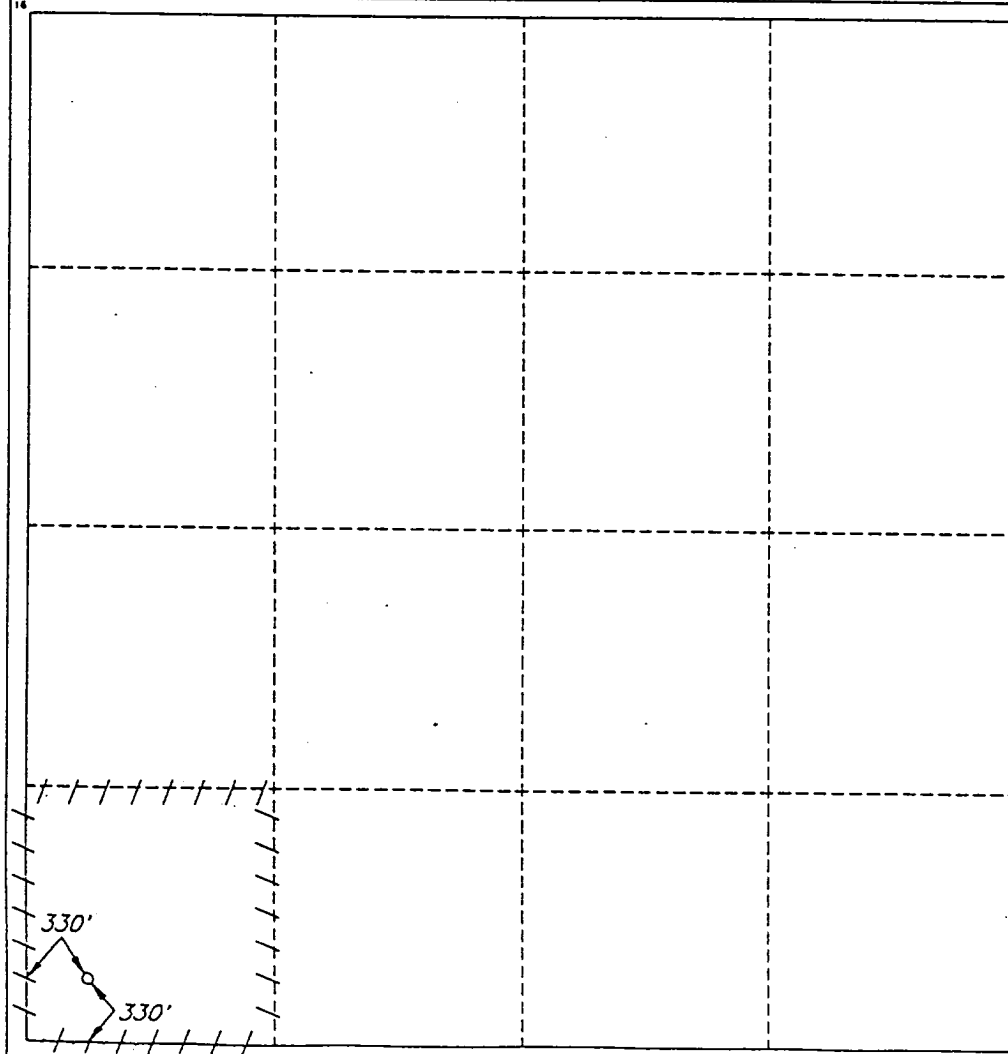
OIL CONSERVATION DIVISION
P. O. Box 2088
Santa Fe, New Mexico 87504-2088

Submit to the Appropriate
District Office
State Lease - 4 copies
Fee Lease - 3 copies

☐ AMENDED REPORT


WELL LOCATION AND ACREAGE DEDICATION PLAT

1 API Number 30-025-34247		2 Pool Code 49820		3 Pool Name Pearl San Andres West					
4 Property Code 006602		5 Property Name LEA AQ STATE						6 Well Number 8	
7 OGRID No. 014245		8 Operator Name MATADOR OPERATING COMPANY						9 Elevation 3743'	
10 SURFACE LOCATION									
UL or lot no. M	Section 29	Township 19 SOUTH	Range 35 EAST, N.M.P.M.	Lot Ida	Feet from the 330'	North/South line SOUTH	Feet from the 330'	East/West line WEST	County LEA
11 BOTTOM HOLE LOCATION IF DIFFERENT FROM SURFACE									
UL or lot no.	Section	Township	Range	Lot Ida	Feet from the	North/South line	Feet from the	East/West line	County
12 Dedicated Acres 40		13 Joint or Infill		14 Consolidation Code		15 Order No.			
NO ALLOWABLE WELL BE ASSIGNED TO THIS COMPLETION UNTIL ALL INTERESTS HAVE BEEN CONSOLIDATED OR A NON-STANDARD UNIT HAS BEEN APPROVED BY THE DIVISION									



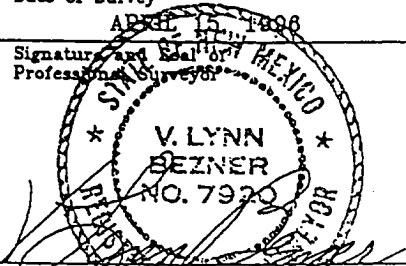
OPERATOR CERTIFICATION

I hereby certify that the information contained herein is true and complete to the best of my knowledge and belief.

Signature: 
Printed Name
R. F. Burke
Title
Operations Manager
Date
4-18-96

SURVEYOR CERTIFICATION

I hereby certify that the well location shown on this plat was plotted from field notes of actual surveys made by me or under my supervision, and that the same is true and correct to the best of my belief.

Date of Survey
APR 15 1996
Signature and Seal of Professional Surveyor

Certified and Filed
V. L. BEZNER R.P.S. #7920
JOB #45006 / 71 NW / V.H.B.

111

APR 20 1998

Recd

100-123456789