

DISTRICT I
P.O. Box 1980, Hobbs, NM 88240

DISTRICT II
P.O. Drawer DD, Artesia, NM 88210

DISTRICT III
1000 Rio Brazos Rd., Aztec, NM 87410

State of New Mexico
Energy, Minerals and Natural Resources Department

Form C-102
Revised February 10, 1994
Instruction on back
Submit to Appropriate District Office
State Lease - 4 Copies
Fee Lease - 3 Copies

OIL CONSERVATION DIVISION

P.O. Box 2088
Santa Fe, New Mexico 87504-2088

☐ AMENDED REPORT

WELL LOCATION AND ACREAGE DEDICATION PLAT

| | | |
|----------------------------|---|-----------------------------|
| API Number 30-025-34282 | Pool Code ✓ | Pool Name Wildcat Strawn |
| Property Code 1 93 | Property Name TW # COOPER | Well Number 5 |
| OGRID No. 495 | Operator Name AMERADA HESS CORPORATION | Elevation 3564' |

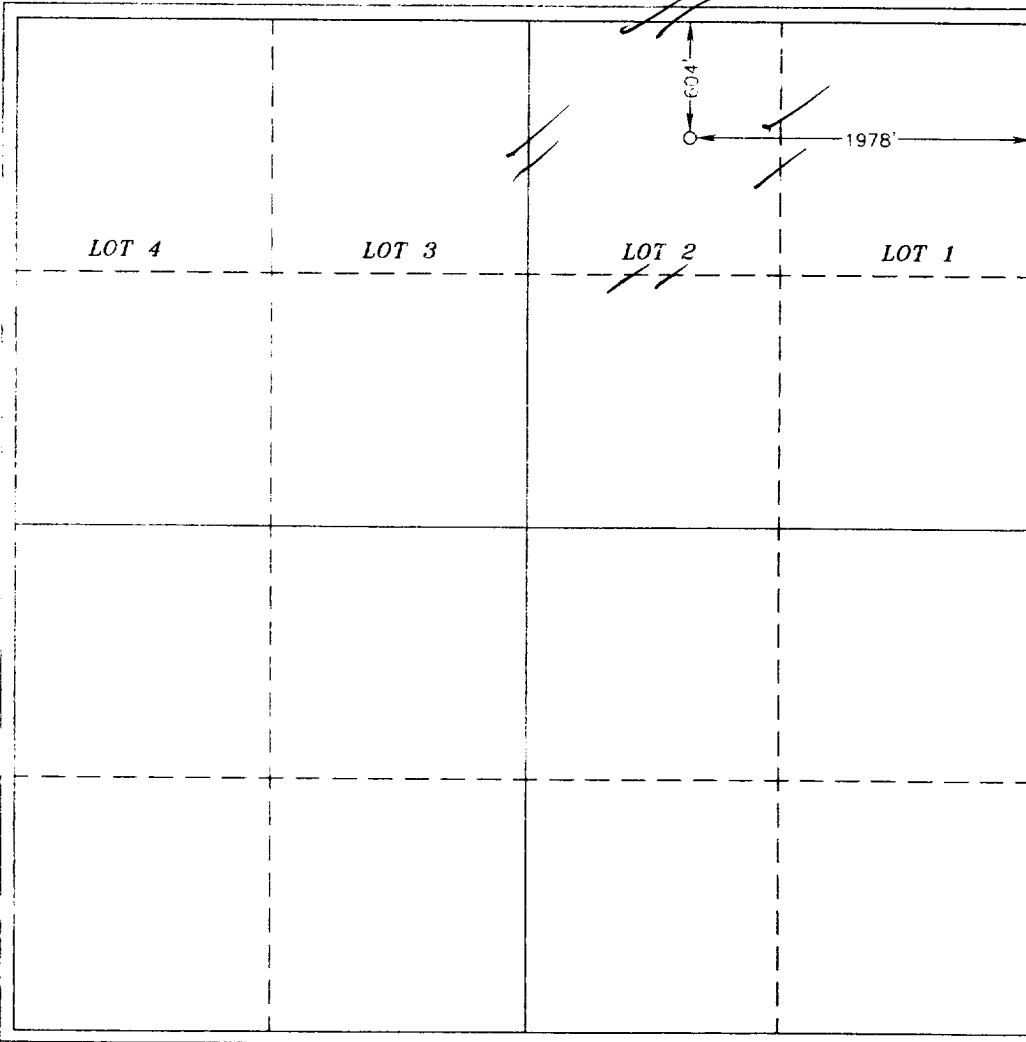
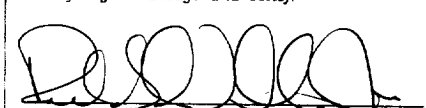
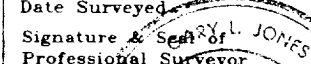
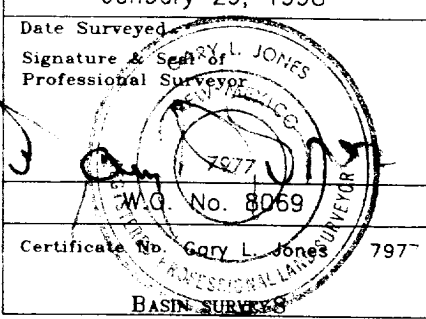
Surface Location

| | | | | | | | | | |
|------------------------|--------------|------------------|---------------|---------|----------------------|---------------------------|-----------------------|------------------------|---------------|
| UL or lot No. LOT 2 | Section 3 | Township 20 S | Range 37 E | Lot Idn | Feet from the 604 | North/South line NORTH | Feet from the 1978 | East/West line EAST | County LEA |
|------------------------|--------------|------------------|---------------|---------|----------------------|---------------------------|-----------------------|------------------------|---------------|

Bottom Hole Location If Different From Surface

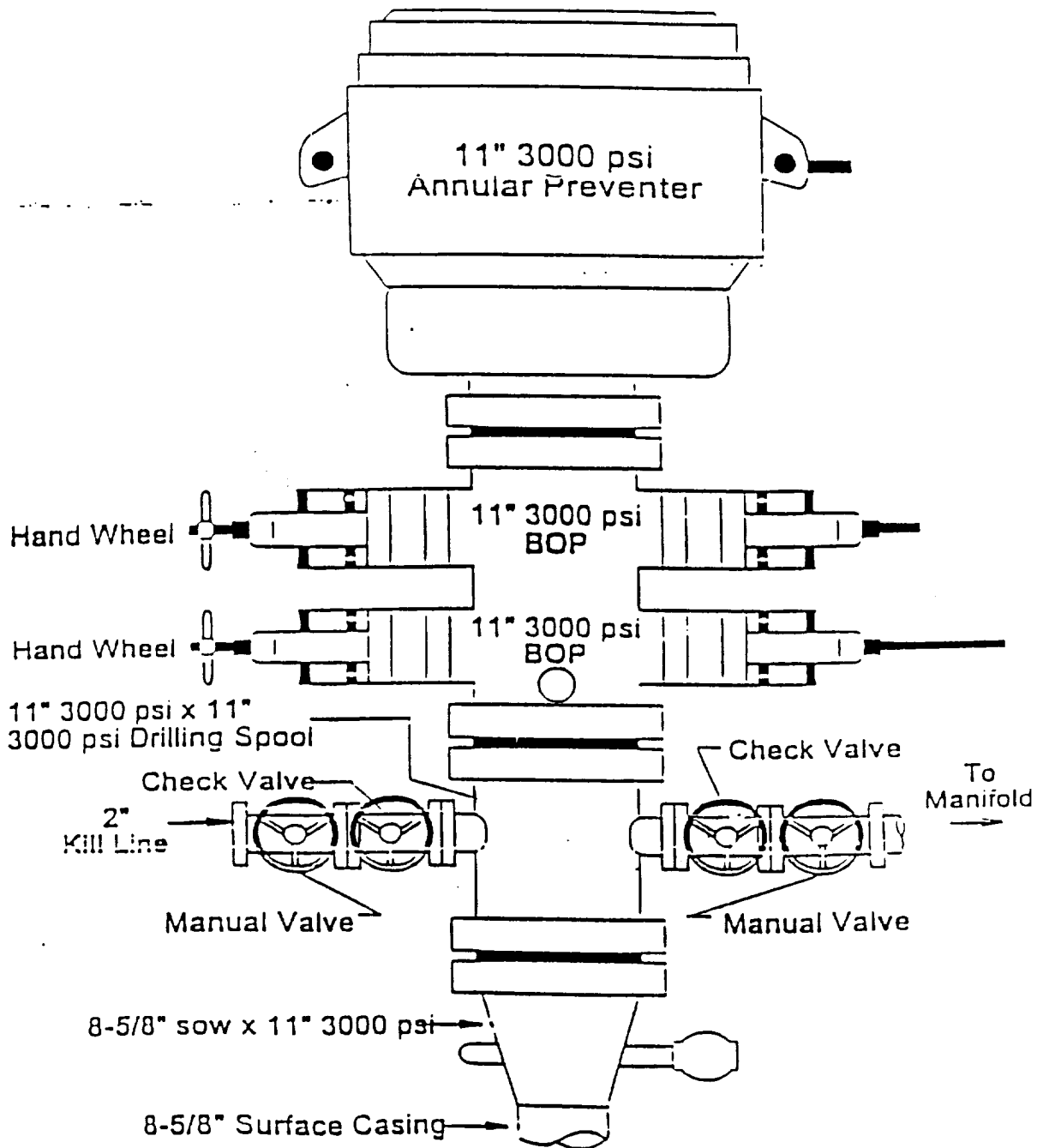
| | | | | | | | | | |
|-----------------|---------|-----------------|--------------------|-----------|---------------|------------------|---------------|----------------|--------|
| UL or lot No. | Section | Township | Range | Lot Idn | Feet from the | North/South line | Feet from the | East/West line | County |
| Dedicated Acres | | Joint or Infill | Consolidation Code | Order No. | | | | | |

NO ALLOWABLE WILL BE ASSIGNED TO THIS COMPLETION UNTIL ALL INTERESTS HAVE BEEN CONSOLIDATED
OR A NON-STANDARD UNIT HAS BEEN APPROVED BY THE DIVISION

| | | | | |
|---|--|--|--|--|
|  | | | | <p>OPERATOR CERTIFICATION</p> <p>I hereby certify the the information contained herein is true and complete to the best of my knowledge and belief.</p> <p> Signature</p> <p>Robert L. Williams Jr. Printed Name</p> <p>Senior Production Foreman Title</p> <p>2/5/98 Date</p> |
| <p>SURVEYOR CERTIFICATION</p> <p>I hereby certify that the well location shown on this plat was plotted from field notes of actual surveys made by me or under my supervision and that the same is true and correct to the best of my belief.</p> <p>January 29, 1998 Date Surveyed</p> <p> Signature & Seal of Professional Surveyor</p> <p></p> <p>Certificate No. Gary L. Jones 7977</p> <p>BASIN SURVEYS</p> | | | | |

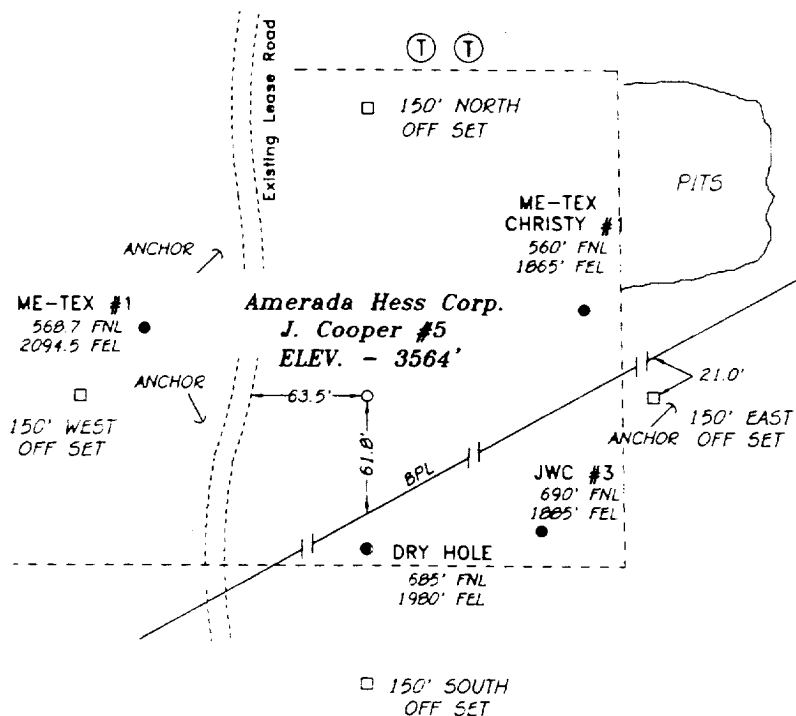
B.O.P. STACK

3000# - 5000#



CONFIDENTIAL

SECTION 3, TOWNSHIP 20 SOUTH, RANGE 37 EAST, N.M.P.M.,
LEA COUNTY, NEW MEXICO.



100 0 100 200 FEET

SCALE: 1" = 100'

Amerada Hess Corporation

REF: J. Cooper No. 5 / Well Pad Topo

THE J. COOPER No. 5 LOCATED 604' FROM THE
NORTH LINE AND 1978' FROM THE EAST LINE OF
SECTION 3, TOWNSHIP 20 SOUTH, RANGE 37 EAST,
N.M.P.M., LEA COUNTY, NEW MEXICO.

BASIN SURVEYS P.O. BOX 1786-HOBBS, NEW MEXICO

W.C. Number: 8069

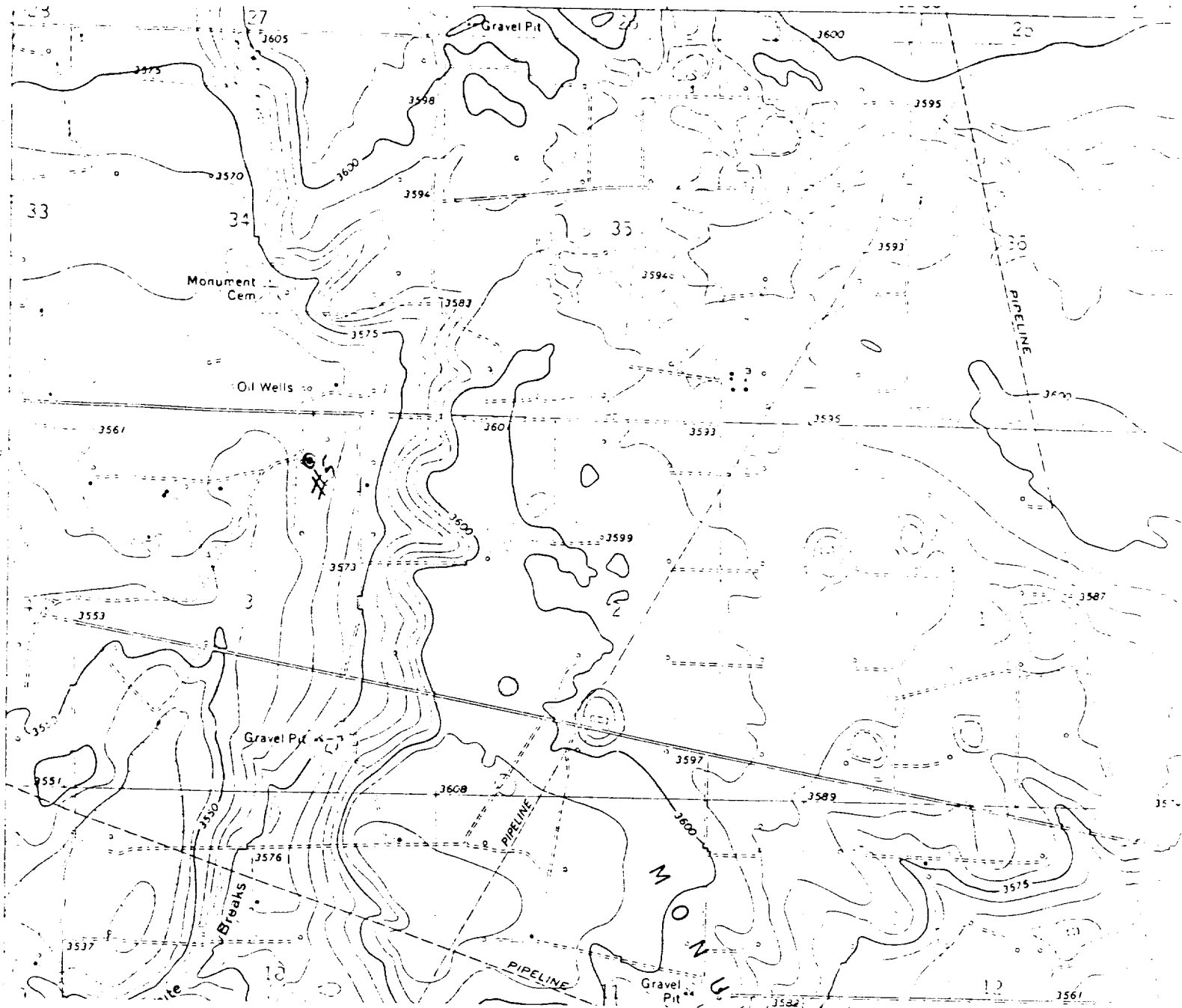
Drawn By: K. GOAD

Order: 01-30-98

Draw: K.G. #85 - 8069A DWS

Survey Date: 01-29-95

Sheet 1 of 1 Sheet



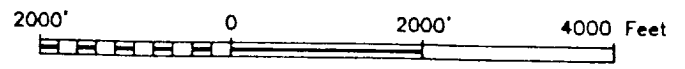
AMERADA HESS CORPORATION
J. COOPER #5
604' FNL & 1978' FEL
Sec. 3, T-20-S, R-37-E,
Lea County, New Mexico.



SCALE: 1"=2000'

BASIN SURVEYS

P.O. BOX 1786-HOBBS, NEW MEXICO



| | | | |
|-------------------|-------------------|-----------------------|---------------------|
| W.O. Number: 8069 | Drawn By: K. GOAD | Survey Date: 01-29-98 | Sheet 1 of 1 Sheets |
|-------------------|-------------------|-----------------------|---------------------|

11/5/99
80/01/5

11/5

