

District I
PO Box 1980, Hobbs, NM 88241-1980
District II
811 S. 1st Street, Artesia, NM 88210-2834
District III
1000 Rio Brazos Rd., Aztec, NM 87410
District IV
2040 South Pacheco, Santa Fe, NM 87505

State of New Mexico
Energy, Minerals & Natural Resources Department

OIL CONSERVATION DIVISION
2040 South Pacheco
Santa Fe, NM 87505

Form C-101
Revised October 18, 1994
Instructions on back
Submit to Appropriate District Office
State Lease - 6 Copies
Fee Lease - 5 Copies

☐ AMENDED REPORT

APPLICATION FOR PERMIT TO DRILL, RE-ENTER, DEEPEN, PLUGBACK, OR ADD A ZONE

¹ Operator name and Address Chevron U.S.A. Inc. P.O. Box 1150 Midland, TX 79702		² OGRID Number 4323
⁴ Property Code 18665	⁵ Property Name MONUMENT "14" STATE	³ API Number 30-0 25-34352
		⁶ Well No. 21

⁷ Surface Location									
UL or lot no.	Section	Township	Range	Lot. Idn	Feet from the	North/South Line	Feet from the	East/West line	County
N	14	19S	36E		990	SOUTH	2308	WEST	LEA

⁸ Proposed Bottom Hole Location If Different From Surface									
UL or lot no.	Section	Township	Range	Lot. Idn	Feet from the	North/South Line	Feet from the	East/West line	County
⁹ Proposed Pool 1 MONUMENT; ABO, NORTH 46980					¹⁰ Proposed Pool 2				

¹¹ Work Type Code N	¹² Well Type Code 0	¹³ Cable/Rotary ROTARY	¹⁴ Lease Type Code S	¹⁵ Ground Level Elevation 3736'
¹⁶ Multiple NO	¹⁷ Proposed Depth 8000'	¹⁸ Formation ABO	¹⁹ Contractor UNKNOWN	²⁰ Spud Date 4/7/98

²¹ Proposed Casing and Cement Program					
Hole Size	Casing Size	Casing weight/foot	Setting Depth	Sacks of Cement	Estimated TOC
11"	8-5/8"	24	1525'	500	SURFACE
7-7/8"	5-1/2"	15.5	8000'	850	1325'

²² Describe the proposed program. If this application is to DEEPEN or PLUG BACK give the data on the present productive zone and proposed new productive zone. Describe the blowout prevention program, if any. Use additional sheets if necessary

CHEVRON PROPOSES TO:

DRILL WITH BIT TO 1525', RUN 8-5/8" CSG. CMT W/CLASS "C" TO SURF. NU DIVERTER.
DRILL WITH BIT TO 8000', RUN 5-1/2" CSG. CMT W/CLASS "C". NU & TEST BOP.

MUD PROGRAM: SURFACE HOLE: 0' - 1525', FRESH WATER 8.4 PPG

PRODUCTION HOLE: 1525' - 8000', CUT BRINE WATER 8.8 PPG

*****PLEASE EXPEDITE*****

Permit Expires 1 Year From Approval
Date Unless Drilling Underway

²³ I hereby certify that the information given above is true and complete to the best of my knowledge and belief.

Signature:

J. K. Ripley

Printed name: J. K. Ripley

Title: T. A.

Date: 3/31/98

Phone: (915) 687-7148

OIL CONSERVATION DIVISION

Approved by:

ORIGINAL SIGNED BY CHRIS WILLIAMS

Title:

DISTRICT I SUPERVISOR

Approval Date: APR 02 1998

Expiration Date:

Conditions of Approval:

Attached ☐

DISTRICT I
P.O. Box 1980, Hobbs, NM 88241-1980

DISTRICT II
P.O. Drawer DD, Artesia, NM 88211-0719

DISTRICT III
1000 Rio Brazos Rd., Aztec, NM 87410

DISTRICT IV
P.O. BOX 2088, SANTA FE, N.M. 87504-2088

State of New Mexico
Energy, Minerals and Natural Resources Department

Form C-102
Revised February 10, 1994
Submit to Appropriate District Office
State Lease - 4 Copies
Fee Lease - 3 Copies

OIL CONSERVATION DIVISION

P.O. Box 2088
Santa Fe, New Mexico 87504-2088

☐ AMENDED REPORT

WELL LOCATION AND ACREAGE DEDICATION PLAT

API Number 30-025-34352	Pool Code 46980	Pool Name MONUMENT; ABO, NORTH
Property Code 18665	Property Name MONUMENT 14 STATE	Well Number 21
OGRID No. 4323	Operator Name CHEVRON U.S.A. PRODUCTION COMPANY	Elevation 3736'

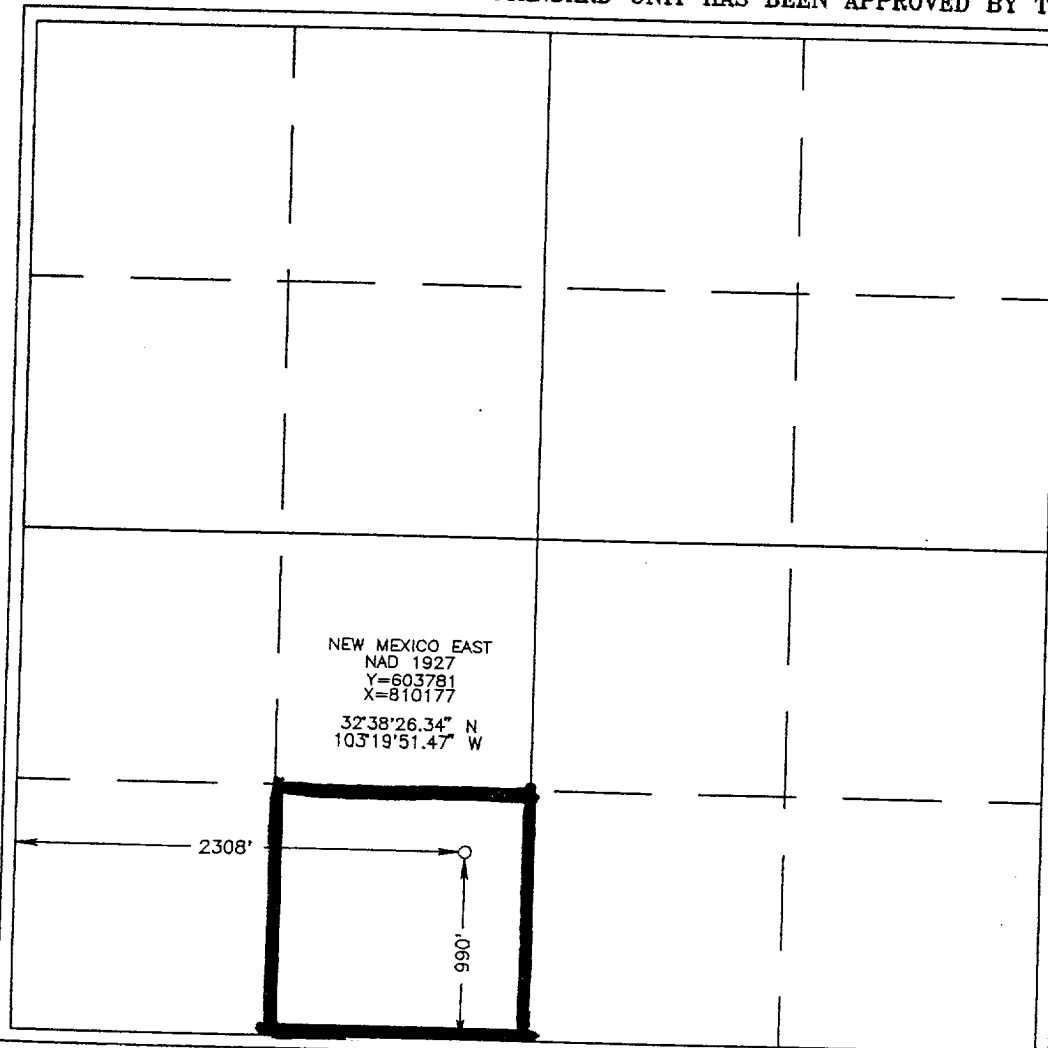
Surface Location

UL or lot No. N	Section 14	Township 19 S	Range 36 E	Lot Idn	Feet from the 990	North/South line SOUTH	Feet from the 2308	East/West line WEST	County LEA
--------------------	---------------	------------------	---------------	---------	----------------------	---------------------------	-----------------------	------------------------	---------------

Bottom Hole Location If Different From Surface

UL or lot No.	Section	Township	Range	Lot Idn	Feet from the	North/South line	Feet from the	East/West line	County
Dedicated Acres 40	Joint or Infill	Consolidation Code	Order No.						

NO ALLOWABLE WILL BE ASSIGNED TO THIS COMPLETION UNTIL ALL INTERESTS HAVE BEEN CONSOLIDATED
OR A NON-STANDARD UNIT HAS BEEN APPROVED BY THE DIVISION



OPERATOR CERTIFICATION

I hereby certify the the information
contained herein is true and complete to the
best of my knowledge and belief.

J. K. Ripley
Signature

J. K. Ripley
Printed Name

T.A.
Title

3/31/98
Date

SURVEYOR CERTIFICATION

I hereby certify that the well location shown
on this plat was plotted from field notes of
actual surveys made by me or under my
supervision and that the same is true and
correct to the best of my belief.

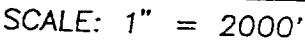
MARCH 13, 1998

Date Surveyed CDG

Signature & Seal of
Professional Surveyor

Ronald G. Edson
3-20-98
3-20-98
3-20-98

Certificate No. RONALD G. EDSON 3239
GARY EDSON 12641



SEC. 14 TWP. 19-S RGE. 36-E

SURVEY _____ N.M.P.M.

COUNTY _____ LEA

DESCRIPTION 990' FSL & 2308' FWL

ELEVATION 3736'

OPERATOR CHEVRON U.S.A. PRODUCTION COMPANY

LEASE MONUMENT 14 STATE

U.S.G.S. TOPOGRAPHIC MAP

MONUMENT NORTH, NM

**JOHN WEST ENGINEERING
HOBBS, NEW MEXICO**

(505) 393-3117