

DISTRICT I  
P.O. Box 1980 Hobbs, NM 88241-1980

DISTRICT II  
P.O. Drawer DD, Artesia, NM 88211-0719

DISTRICT III  
1000 Rio Brazos Rd., Aztec, NM 87410

DISTRICT IV  
P.O. BOX 2088, SANTA FE, N.M. 87504-2088

State of New Mexico  
Energy, Minerals and Natural Resources Department

Form C-102  
Revised February 10, 1994  
Submit to Appropriate District Office  
State Lease - 4 Copies  
Fee Lease - 3 Copies

OIL CONSERVATION DIVISION

P.O. Box 2088  
Santa Fe, New Mexico 87504-2088

☐ AMENDED REPORT

WELL LOCATION AND ACREAGE DEDICATION PLAT

API Number <b>30-025-34407</b>	Pool Code <b>46980 46990</b>	Pool Name <b>MONUMENT; ABO, NORTH</b>
Property Code <b>20070</b>	Property Name <b>MONUMENT 23 STATE</b>	Well Number <b>23</b>
OGRID No. <b>4323</b>	Operator Name <b>CHEVRON U.S.A. PRODUCTION COMPANY</b>	Elevation <b>3730</b>

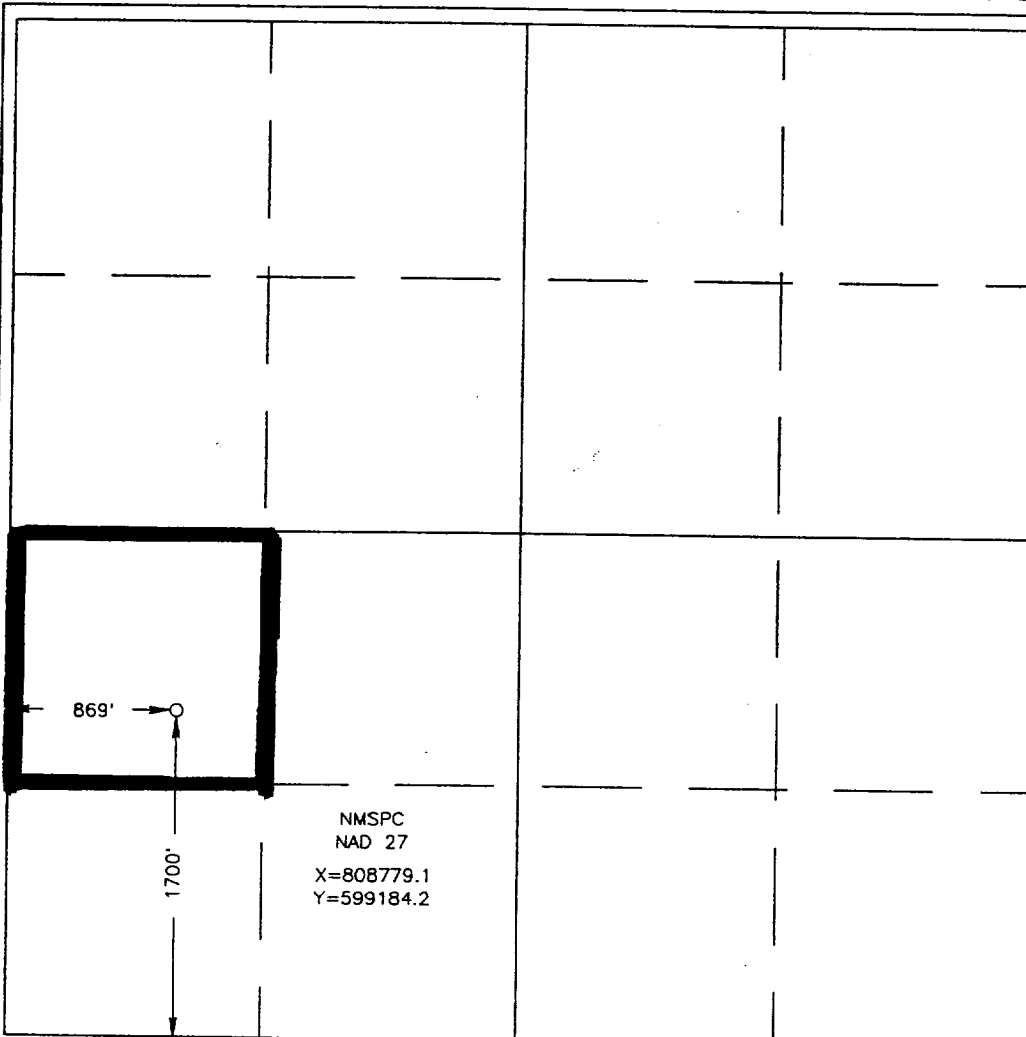
Surface Location

UL or lot No. <b>L</b>	Section <b>23</b>	Township <b>19 S</b>	Range <b>36 E</b>	Lot Idn	Feet from the <b>1700</b>	North/South line <b>SOUTH</b>	Feet from the <b>869</b>	East/West line <b>WEST</b>	County <b>LEA</b>
---------------------------	----------------------	-------------------------	----------------------	---------	------------------------------	----------------------------------	-----------------------------	-------------------------------	----------------------

Bottom Hole Location If Different From Surface

UL or lot No.	Section	Township	Range	Lot Idn	Feet from the	North/South line	Feet from the	East/West line	County
Dedicated Acres <b>40</b>	Joint or Infill	Consolidation Code	Order No.						

NO ALLOWABLE WILL BE ASSIGNED TO THIS COMPLETION UNTIL ALL INTERESTS HAVE BEEN CONSOLIDATED  
OR A NON-STANDARD UNIT HAS BEEN APPROVED BY THE DIVISION



OPERATOR CERTIFICATION

I hereby certify the the information contained herein is true and complete to the best of my knowledge and belief.

*J. K. Ripley*  
Signature  
J. K. Ripley  
Printed Name  
T.A.  
Title  
5/28/98  
Date

SURVEYOR CERTIFICATION

I hereby certify that the well location shown on this plat was plotted from field notes of actual surveys made by me or under my supervision, and that the same is true and correct to the best of my belief.

MAY 20, 1998

Date Surveyed  
Signature & Seal of Professional Surveyor  
RONALD G. EDSON  
5-22-98  
88-11-0752  
Certified Professional Surveyor  
Date No. RONALD G. EDSON 3239  
12641  
12185