

DISTRICT I

P.O. Box 1980, Hobbs, NM 88241-1980

DISTRICT II

P.O. Box Drawer DD, Artesia, NM 88211-0719

DISTRICT III

1000 Rio Brazos Rd., Aztec, NM 87410

DISTRICT IV

P.O. Box 2088, Santa Fe, NM 87504-2088

State of New Mexico
Energy, Minerals and Natural Resources Department

OIL CONSERVATION DIVISION

P.O. Box 2088
Santa Fe, New Mexico 87504-2088

Form C-101

Revised February 10, 1994

Instructions on back

Submit to Appropriate District Office

State Lease - 6 Copies

Fee Lease - 5 Copies

☐ AMENDED REPORT

APPLICATION FOR PERMIT TO DRILL, RE-ENTER, DEEPEN, PLUGBACK, OR ADD A ZONE

¹ Operator Name and Address TEXACO EXPLORATION & PRODUCTION INC. 205 E. Bender, HOBBS, NM 88240		² O 3RID Number 022351
⁴ Property Code 011127	⁵ Property Name VAN ET TEN L.	³ AFI Number 30 025 34528
		⁶ Well No. 19

⁷ Surface Location

UI or lot no.	Section	Township	Range	Lot.Idn	Feet From The	North/South Line	Feet From The	East/West Line	County
O	9	20S	37E		467	SOUTH	1650	EAST	LEA

⁸ Proposed Bottom Hole Location If Different From Surface

UI or lot no.	Section	Township	Range	Lot.Idn	Feet From The	North/South Line	Feet From The	East/West Line	County
⁹ Proposed Pool 1 MONUMENT TUBB					¹⁰ Proposed Pool 2				

¹¹ Work Type Code P	¹² Well Type Code O	¹³ Rotary or C.T. ROTARY	¹⁴ Lease Type Code P	¹⁵ Ground Level Elevation 35.14 GL
¹⁶ Multiple No	¹⁷ Proposed Depth 7500'	¹⁸ Formation TUBB	¹⁹ Contractor	²⁰ Spud Date 2/23/99

²¹ Proposed Casing and Cement Program

SIZE OF HOLE	SIZE OF CASING	WEIGHT PER FOOT	SETTING DEPTH	SACKS OF CEMENT	EST. TOP
11"	8-5/8"	24#	1150'	450 SX, CIRC.	
7-7/8"	5-1/2"	15.5#LS65	1125'		
7-7/8"	5-1/2"	15.5#K55	7500'	1320 SX, CIRC.	

²² Describe the proposed program. If this application is to DEEPEN or PLUG BACK give the data on the present productive zone and proposed new productive zone. Describe the blowout prevention program, if any. Use additional sheets if necessary.

TEXACO INTENDS TO RECOMPLETE THIS WELL TO THE MONUMENT TUBB. THE INTENDED PROCEDURE IS AS FOLLOWS:

1. MIRU. TOH W/RDS & PMP. INSTL BOP & TOH W/PROD TBG. PU WS & TIH W/BIT & CSG SCRAPER TO 7030'.
2. SET CIBP @ 7020'. TIH W/DUMP BAILER & PLACE 35' CMT ON TOP OF CIBP FOR NEW PBTD OF 6985'.
3. RU FULL LUBRICATOR W/PACKOFF. TIH W/CSG GUN & PERF 2 SPF FROM 6256-6498'. TOH W/WL.
4. TIH W/TRTNG PKR ON WS & SET PKR @ 6050'. OPEN BYPASS & SPOT ACID TO END OF TP. CLOSE BYPASS & ACIDIZE PERFS W/7500 GALLONS 15% NEFE HCL DROPPING 1.3 SG BALLSEALERS.
5. SHUT IN 2 HRS. FLOW OR SWAB BACK LOAD.
6. IF WELL WILL NOT FLOW, REL PKR & TOH W/TBG & PKR & TIH W/PMPNG EQPT AND PLACE WELL ON PRODUCTION.

²³ I hereby certify that the rules and regulations of the Oil Conservation Division have been complied with and that the information given above is true and complete to the best of my knowledge and belief.

Signature

J. Denise Leake

Printed Name

J. Denise Leake

Title

Engineering Assistant

Date

2/17/99

Telephone

397-0405

OIL CONSERVATION DIVISION

Approved By:

J. Denise Leake

Title:

Approval Date: Feb 22 1999

Expiration Date:

Conditions of Approval:

Attached ☐

CeSoto/Nichol: 3-94 ver 1.10

Certificate No.

DeSoto/Nichol: 2-94 ver 1.10

DISTRICT I

P.O. Box 1980, Hobbs, NM 88241-1980

DISTRICT II

P.O. Box Drawer DD, Artesia, NM 88211-0719

DISTRICT III

1000 Rio Brazos Rd., Aztec, NM 87410

DISTRICT IV

P.O. Box 2088, Santa Fe, NM 87504-2088

State of New Mexico

Energy, Minerals and Natural Resources Department

OIL CONSERVATION DIVISION

P.O. Box 2088

Santa Fe, New Mexico 87504-2088

Form C-102

Revised February 10, 1994

Instructions on back

Submit to Appropriate District Office

State Lease - 4 Copies

Fee Lease - 3 Copies

☐ AMENDED REPORT

WELL LOCATION AND ACREAGE DEDICATION PLAT

¹ API Number 30 025 34528	² Pool Code 47090	³ Pool Name MONUMENT TUBB
⁴ Property Code 011127	⁵ Property Name VAN ETEN L.	⁶ Well No. 19
⁷ OGRID Number 022351	⁸ Operator Name TEXACO EXPLORATION & PRODUCTION INC.	⁹ Elevation 3544 GL

¹⁰ Surface Location

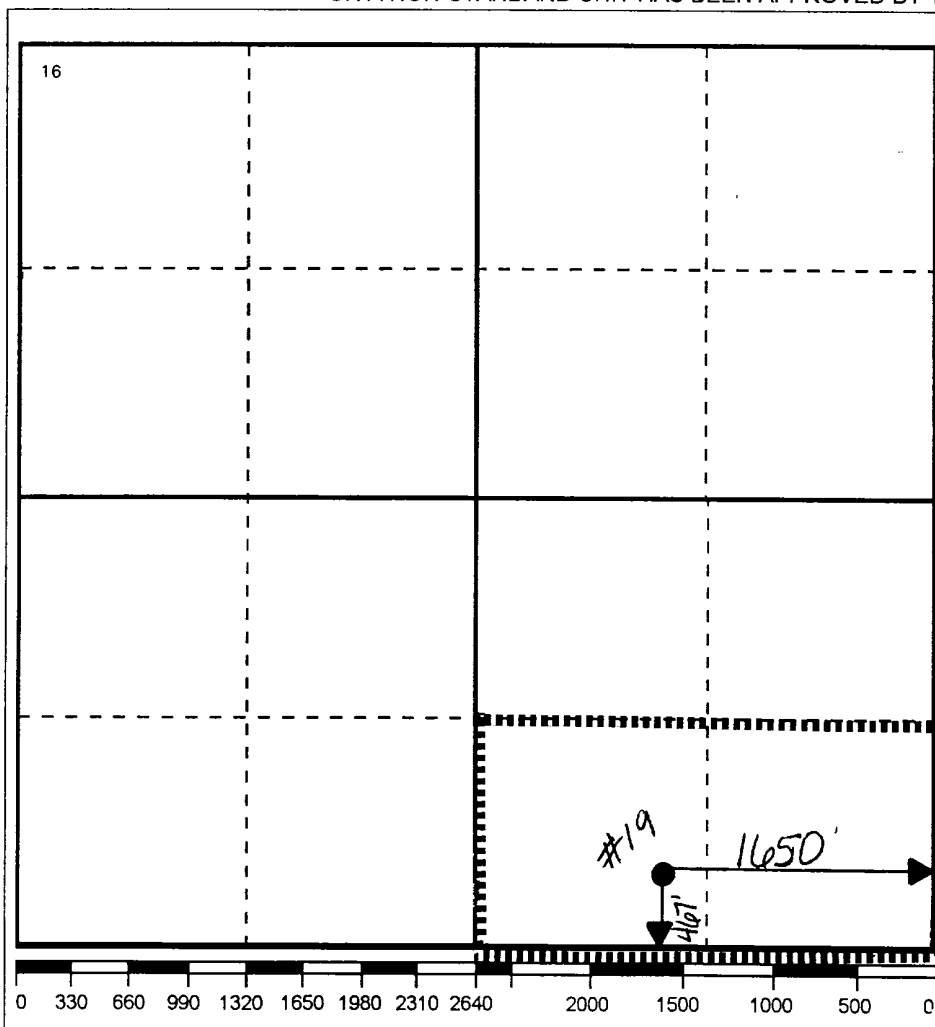
Ul or lot no. O	Section 9	Township 20S	Range 37E	Lot.Idn	Feet From The 467	North/South Line SOUTH	Feet From The 1650	East/West Line EAST	County LEA
--------------------	--------------	-----------------	--------------	---------	----------------------	---------------------------	-----------------------	------------------------	---------------

¹¹ Bottom Hole Location If Different From Surface

Ul or lot no.	Section	Township	Range	Lot.Idn	Feet From The	North/South Line	Feet From The	East/West Line	County
---------------	---------	----------	-------	---------	---------------	------------------	---------------	----------------	--------

¹² Dedicated Acres 80	¹³ Joint or Infill No	¹⁴ Consolidation Code	¹⁵ Order No.
-------------------------------------	-------------------------------------	----------------------------------	-------------------------

NO ALLOWABLE WILL BE ASSIGNED TO THIS COMPLETION UNTIL ALL INTERESTS HAVE BEEN CONSOLIDATED
OR A NON-STANDARD UNIT HAS BEEN APPROVED BY THE DIVISION



17 OPERATOR CERTIFICATION

I hereby certify that the information contained herein is true and complete to the best of my knowledge and belief

Signature

Printed Name

J. Denise Leake

Position

Engineering Assistant

Date

2/17/99

18 SURVEYOR CERTIFICATION

I hereby certify that the well location shown on this plat was plotted from field notes of actual surveys made by me or under my supervision, and that the same is true and correct to the best of my knowledge and belief.

Date Surveyed

Signature & Seal of

Professional Surveyor

Certificate No.