

District I
PO Box 1980, Hobbs, NM 88241-1980
District II
811 S. 1st Street, Artesia, NM 88210-2834
District III
1000 Rio Brazos Rd., Aztec, NM 87410
District IV
2040 South Pacheco, Santa Fe, NM 87505

State of New Mexico
Energy, Minerals & Natural Resources Department

OIL CONSERVATION DIVISION
2040 South Pacheco
Santa Fe, NM 87505

Form C-101
Revised October 18, 1994
Instructions on back
Submit to Appropriate District Office
State Lease - 6 Copies
Fee Lease - 5 Copies

☐ AMENDED REPORT

APPLICATION FOR PERMIT TO DRILL, RE-ENTER, DEEPEN, PLUGBACK, OR ADD A ZONE

¹ Operator name and Address Bass Enterprises Production Co. P.O. Box 2760 Midland, TX 79702-2760		² OGRID Number 001801
⁴ Property Code 24869	⁵ Property Name EXXON 32 STATE	³ API Number 30-025-34704
		⁶ Well No. 1

⁷ Surface Location									
UL or lot no. D	Section 32	Township 20S	Range 33E	Lot. Idn	Feet from the 660'	North/South Line NORTH	Feet from the 660'	East/West line WEST	County LEA

⁸ Proposed Bottom Hole Location If Different From Surface									
UL or lot no.	Section	Township	Range	Lot. Idn	Feet from the	North/South Line	Feet from the	East/West line	County
⁹ Proposed Pool 1 HAT MESA (DELAWARE)					¹⁰ Proposed Pool 2				

¹¹ Work Type Code N	¹² Well Type Code O	¹³ Cable/Rotary R	¹⁴ Lease Type Code S	¹⁵ Ground Level Elevation 3605'
¹⁶ Multiple N	¹⁷ Proposed Depth 8500'	¹⁸ Formation Delaware BONE SPRING	¹⁹ Contractor UNKNOWN	²⁰ Spud Date ASAP

²¹ Proposed Casing and Cement Program					
Hole Size	Casing Size	Casing weight/foot	Setting Depth	Sacks of Cement	Estimated TOC
14-3/4"	11-3/4"	42#	1380'	740 SX	SURFACE
11"	8-5/8"	28#	3200	730 SX	SURFACE
7-7/8"	5-1/2"	15.5# & 17#	8500'	703 SX	2900' (300' INSIDE INTERMEDIATE CASING)

²² Describe the proposed program. If this application is to DEEPEN or PLUG BACK give the data on the present productive zone and proposed new productive zone. Describe the blowout prevention program, if any. Use additional sheets if necessary

THIS WELL IS INSIDE THE R-111 POTASH AREA.
THE SURFACE CASING WILL BE SET INTO THE RUSTLER BELOW ALL FRESH WATER SANDS.
THE INTERMEDIATE CASING WILL BE SET THROUGH THE SALT.
CEMENT WILL TIE 300' INTO THE INTERMEDIATE CASING.

Permit Expires 1 Year from Approval
Date Unless Drilling Underway

²³ I hereby certify that the information given above is true and complete to the best of my knowledge and belief.	OIL CONSERVATION DIVISION	
Signature: William R. Dannels	Approved by ORIGINAL SIGNED BY CHRIS WILLIAMS DISTRICT I SUPERVISOR	
Printed name: WILLIAM R. DANNELS	Title:	
Title: DIVISION DRILLING SUPERINTENDENT	Approval Date: SEP 17 1998	Expiration Date:

**EIGHT POINT DRILLING PROGRAM
BASS ENTERPRISES PRODUCTION CO.**

NAME OF WELL: EXXON 32 STATE #1

LEGAL DESCRIPTION - SURFACE: 660' FNL & 660' FWL, Section 32, T-20-S, R-33-E, Lea County, New Mexico.

POINT 1: ESTIMATED FORMATION TOPS

(See No. 2 Below)

POINT 2: WATER, OIL, GAS AND/OR MINERAL BEARING FORMATIONS

Anticipated Formation Tops: KB 3619' (est)
GL 3605'

<u>FORMATION</u>	<u>ESTIMATED TOP FROM KB</u>	<u>ESTIMATED SUBSEA TOP</u>	<u>BEARING</u>
T/Rustler	1284'	+2335'	Barren
T/Salt	1509'	+2110'	Barren
B/Salt	3111'	+ 508'	Barren
T/Yates	3294'	+ 325'	Barren
T/Capitan	3631'	- 12'	Barren
T/Delaware	4879'	- 1260'	Oil/Gas
T/Brushy Canyon	6459'	- 2840'	Oil/Gas
T/"I" Sand	7012'	- 3393'	Oil/Gas
T/Shell Marker	7231'	- 3612'	Oil/Gas
T/8A Lower Brushy	7959'	- 4340'	Oil/Gas
T/Bone Spring	8257'	- 4638'	Oil/Gas
TD	8500'	- 4881'	

POINT 3: CASING PROGRAM

<u>TYPE</u>	<u>INTERVALS</u>	<u>PURPOSE</u>	<u>CONDITION</u>
11-3/4", 42#, WC-40, STC	0-1380'	Surface	New
8-5/8", 28#, WC-50, STC	1380-3200'	Intermediate	New
5-1/2", 15.50# & 17#, K-55, LTC	3200-8500'	Production	New

POINT 4: PRESSURE CONTROL EQUIPMENT (SEE ATTACHED DIAGRAM)

A BOP equivalent to Diagram 1 will be nipped up on the surface casing head. When testing, the BOP stack, choke, kill lines, kelly cocks, inside BOP, etc. will be hydro-tested to the lowest rated working pressure of the equipment being tested. In addition to the rated working pressure test, a low pressure (200 psi) test will be required. These tests will be performed:

- a) Upon installation
- b) After any component changes
- c) Fifteen days after a previous test
- d) As required by well conditions

Con't...

POINT 4: PRESSURE CONTROL EQUIPMENT (SEE ATTACHED DIAGRAM)

A function test of pipe and blind rams to insure that the preventers are operating correctly will be performed on each trip. A function test is required only a minimum of once every 24 hours. See the attached diagram #1 for the minimum criteria for the choke manifold.

POINT 5: MUD PROGRAM

DEPTH	MUD TYPE	WEIGHT	FV	PV	YP	FL	Ph
0' - 1380'	FW Spud	8.4 - 9.0	45-38	NC	NC	NC	9.5
1380' - 3200'	Brine	9.8 - 10.0	28-30	NC	NC	NC	9.5
3200' - 6000'	FW	8.4 - 8.6	28-30	NC	NC	NC	9.5
6000' - 8200'	FW/Starch	8.4 - 8.6	28-30	NC	NC	<100	9.5
8200' - TD	FW/Gel/Starch	8.4 - 8.6	32-42	NC	NC	<100	9.5

POINT 6: TECHNICAL STAGES OF OPERATION

A) TESTING

None anticipated.

B) LOGGING

GR-CNLF from Intermediate casing point to surface.

GR-CNL-LDT-AIT from TD to Intermediate casing point.

C) CONVENTIONAL CORING

None anticipated.

D) CEMENT

<u>SURFACE</u>						
<u>INTERVAL</u>	<u>AMOUNT SX</u>	<u>FT. OF FILL</u>	<u>TYPE</u>	<u>GALS/SX</u>	<u>PPG</u>	<u>FT³/SX</u>
0-1080'	500	1080	Interfill C + 1/4#/sx Flocele + 3# Salt	10.27	12.7	1.90
1080-1380' (100% excess circ to surface)	240	300	Class C + 2% CaCl ₂	6.31	14.8	1.34

<u>INTERMEDIATE</u>						
<u>INTERVAL</u>	<u>AMOUNT SX</u>	<u>FT OF FILL</u>	<u>TYPE</u>	<u>GALS/SX</u>	<u>PPG</u>	<u>FT³/SX</u>
Lead						
0-2900'	590	2900	Interfill C + 2% CaCl ₂	14.4	11.9	2.49
Tail						
2900'-3200'	140	300	Class C Neat	6.31	14.8	1.34
(100% excess in open hole)						

Con't...

POINT 6: TECHNICAL STAGES OF OPERATION

D) CEMENT Con't...

PRODUCTION

<u>INTERVAL</u>	<u>AMOUNT SX</u>	<u>FT OF FILL</u>	<u>TYPE</u>	<u>GALS/SX</u>	<u>PPG</u>	<u>FT³/SX</u>
Lead 2900'-5860' (50% excess)	300	2960	Interfill C	14.35	11.9	2.49
TAIL 5860-8500' (50% excess)	420	2640	Super H + 3#/sx Salt + 4/10% Halad 344 + 3/10% CFR-3	9.01	13.0	1.70

E) DIRECTIONAL DRILLING

No directional services anticipated.

POINT 7: ANTICIPATED RESERVOIR CONDITIONS

Normal pressured formations are anticipated throughout this well. No H₂S is expected.

POINT 8: OTHER PERTINENT INFORMATION

A) Auxiliary Equipment

Upper and lower kelly cocks. Full opening stab in valve on the rig floor.

B) Anticipated Starting Date

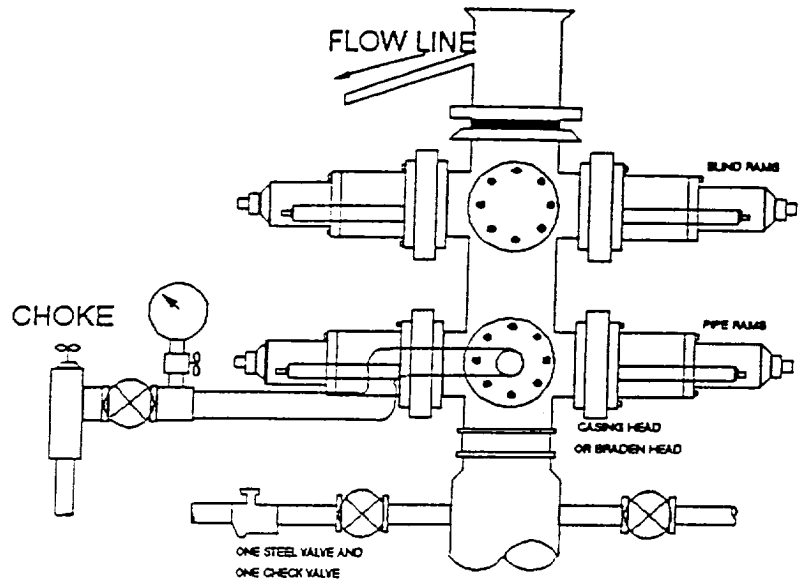
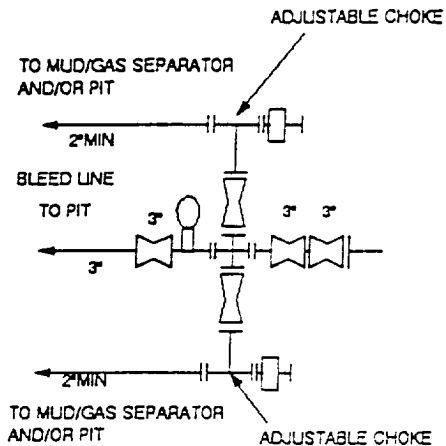
Upon approval

17 days drilling operations

14 days completion operations

FDC/mac
9/14/99

3000 PSI WP



THE FOLLOWING CONSTITUTE MINIMUM BLOWOUT PREVENTER REQUIREMENTS

- A. One double gate blowout preventer with lower rams for pipe and upper rams blind, all hydraulically controlled.
- B. Opening on preventers between rams to be flanged, studded or clamped and at least two inches in diameter.
- C. All connections from operating manifold to preventers to be all steel hose or tube a minimum of one inch in diameter.
- D. The available closing pressure shall be at least 15% in excess of that required with sufficient volume to operate (close, open, and re-close) the preventers.
- E. All connections to and from preventers to have a pressure rating equivalent to that of the BOP's.
- F. Manual controls to be installed before drilling cement plug.
- G. Valve to control flow through drill pipe to be located on rig floor.
- H. All chokes will be adjustable. Choke spool may be used between rams.



DISTRICT I
P.O. Box 1980, Hobbs, NM 88240

DISTRICT II
P.O. Drawer DD, Artesia, NM 88210

DISTRICT III
1000 Rio Brazos Rd., Artec, NM 87410

State of New Mexico
Energy, Minerals and Natural Resources Department

Form C-102
Revised February 10, 1994
Instruction on back
Submit to Appropriate District Office
State Lease - 4 Copies
Fee Lease - 3 Copies

OIL CONSERVATION DIVISION

P.O. Box 2088
Santa Fe, New Mexico 87504-2088

☐ AMENDED REPORT

WELL LOCATION AND ACREAGE DEDICATION PLAT

API Number 30-025-34704	Pool Code 30214	Pool Name Hat Mesa (Delaware)
Property Code 001801 24869	Property Name EXXON "32" STATE	Well Number 1
OGED No. 1801	Operator Name BASS ENTERPRISES PRODUCTION COMPANY	Elevation 3605'

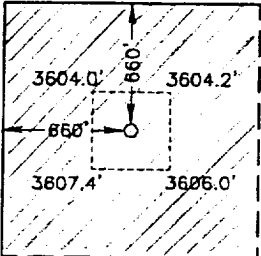
Surface Location

UL or lot No. D	Section 32	Township 20 S	Range 33 E	Lot Idn	Feet from the 660	North/South line NORTH	Feet from the 660	East/West line WEST	County LEA
---------------------------	----------------------	-------------------------	----------------------	---------	-----------------------------	----------------------------------	-----------------------------	-------------------------------	----------------------

Bottom Hole Location If Different From Surface

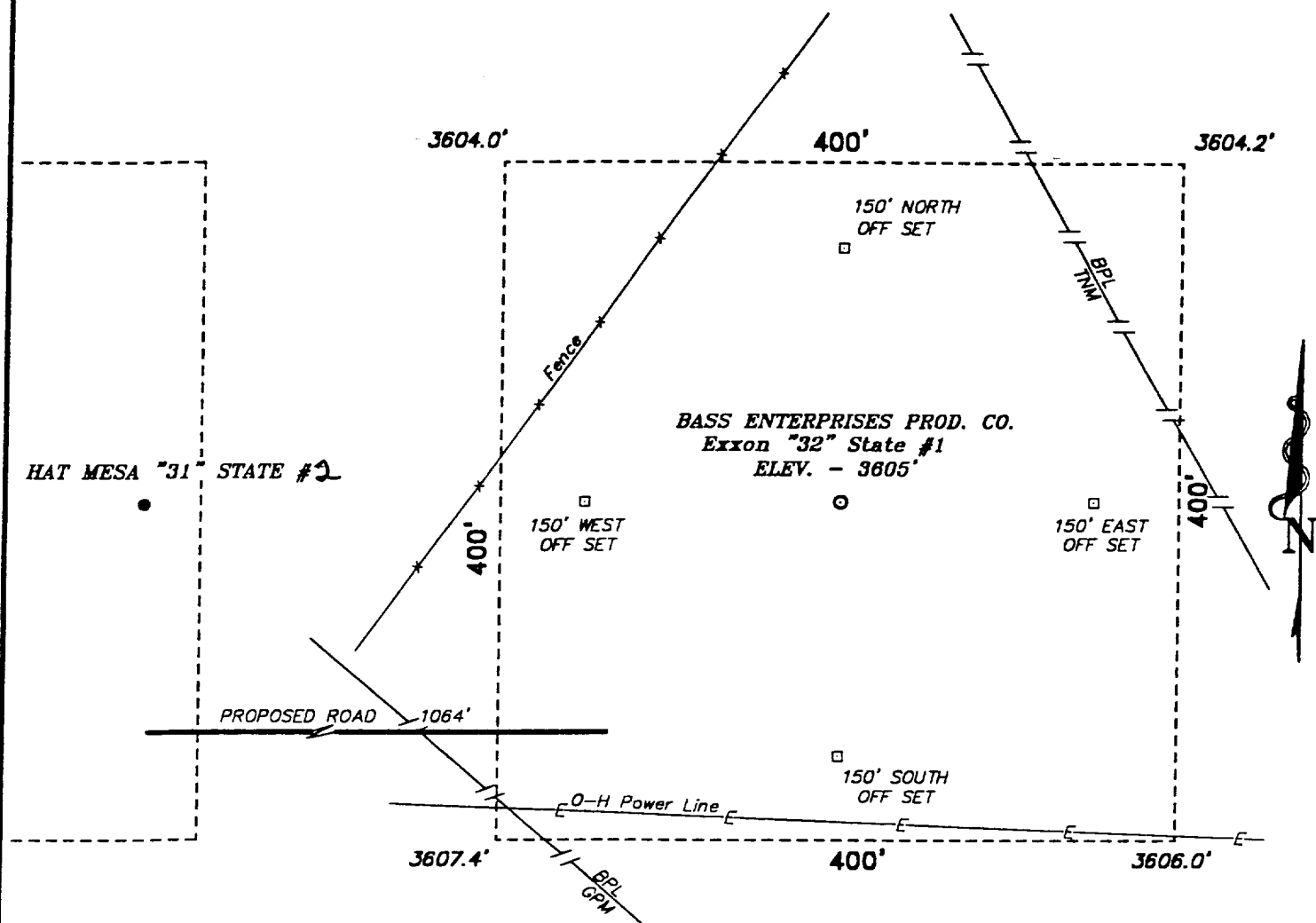
UL or lot No.	Section	Township	Range	Lot Idn	Feet from the	North/South line	Feet from the	East/West line	County
Dedicated Acres 40	Joint or Infill N	Consolidation Code	Order No.						

NO ALLOWABLE WILL BE ASSIGNED TO THIS COMPLETION UNTIL ALL INTERESTS HAVE BEEN CONSOLIDATED
OR A NON-STANDARD UNIT HAS BEEN APPROVED BY THE DIVISION

				OPERATOR CERTIFICATION I hereby certify the the information contained herein is true and complete to the best of my knowledge and belief. <u>William R. Dannels</u> Signature <u>William R. Dannels</u> Printed Name <u>Division Dirg Supt</u> Title <u>September 14, 1999</u> Date	
				SURVEYOR CERTIFICATION I hereby certify that the well location shown on this plat was plotted from field notes of actual surveys made by me or under my supervision, and that the same is true and correct to the best of my belief. <u>September 10, 1999</u> Date Surveyed <u>Gary L. Jones</u> Signature & Seal of Professional Surveyor <u>W.O. No. 9326</u> Certificate No. Gary L. Jones 7977 BASIN SURVEYS	



SECTION 32, TOWNSHIP 20 SOUTH, RANGE 33 EAST, N.M.P.M.,
LEA COUNTY, NEW MEXICO.



BASS ENTERPRISES PROD. CO.

REF: Exxon "32" State No. 1 / Well Pad Topo

THE EXXON "32" STATE No. 1 LOCATED 660' FROM THE
NORTH LINE AND 660' FROM THE WEST LINE OF
SECTION 32, TOWNSHIP 20 SOUTH, RANGE 33 EAST,
N.M.P.M., LEA COUNTY, NEW MEXICO.

BASIN SURVEYS P.O. BOX 1786-HOBBS, NEW MEXICO

W.O. Number: 9326

Drawn By: K. GOAD

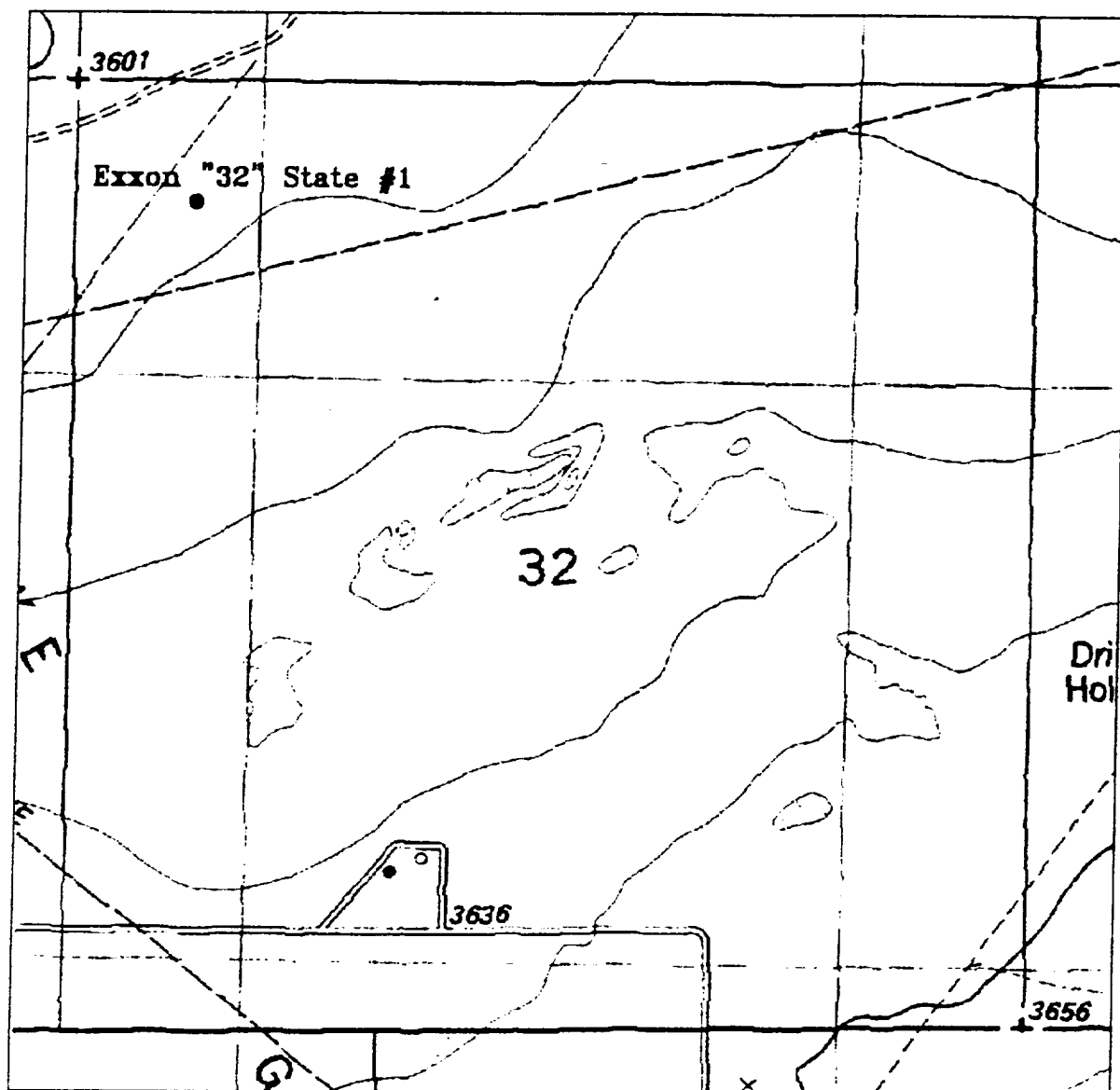
Date: 09-10-99

Disk: KJG #122 - 9326A.DWG

Survey Date: 09-09-99

Sheet 1 of 1 Sheets





EXXON "32" STATE #1

Located at 660' FNL and 660' FWL
 Section 32, Township 20 South, Range 33 East,
 N.M.P.M., Lea County, New Mexico.

basin
surveys

focused on excellence
 in the oilfield

P.O. Box 1786
 1120 N. West County Rd.
 Hobbs, New Mexico 88241
 (505) 393-7316 - Office
 (505) 392-3074 - Fax
 basinsurveys.com

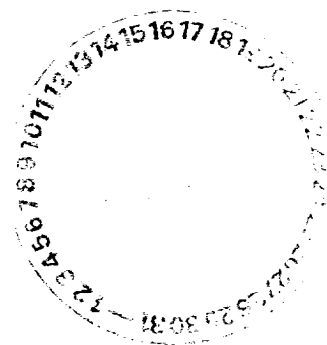
W.O. Number: 9326AA - KUG #121

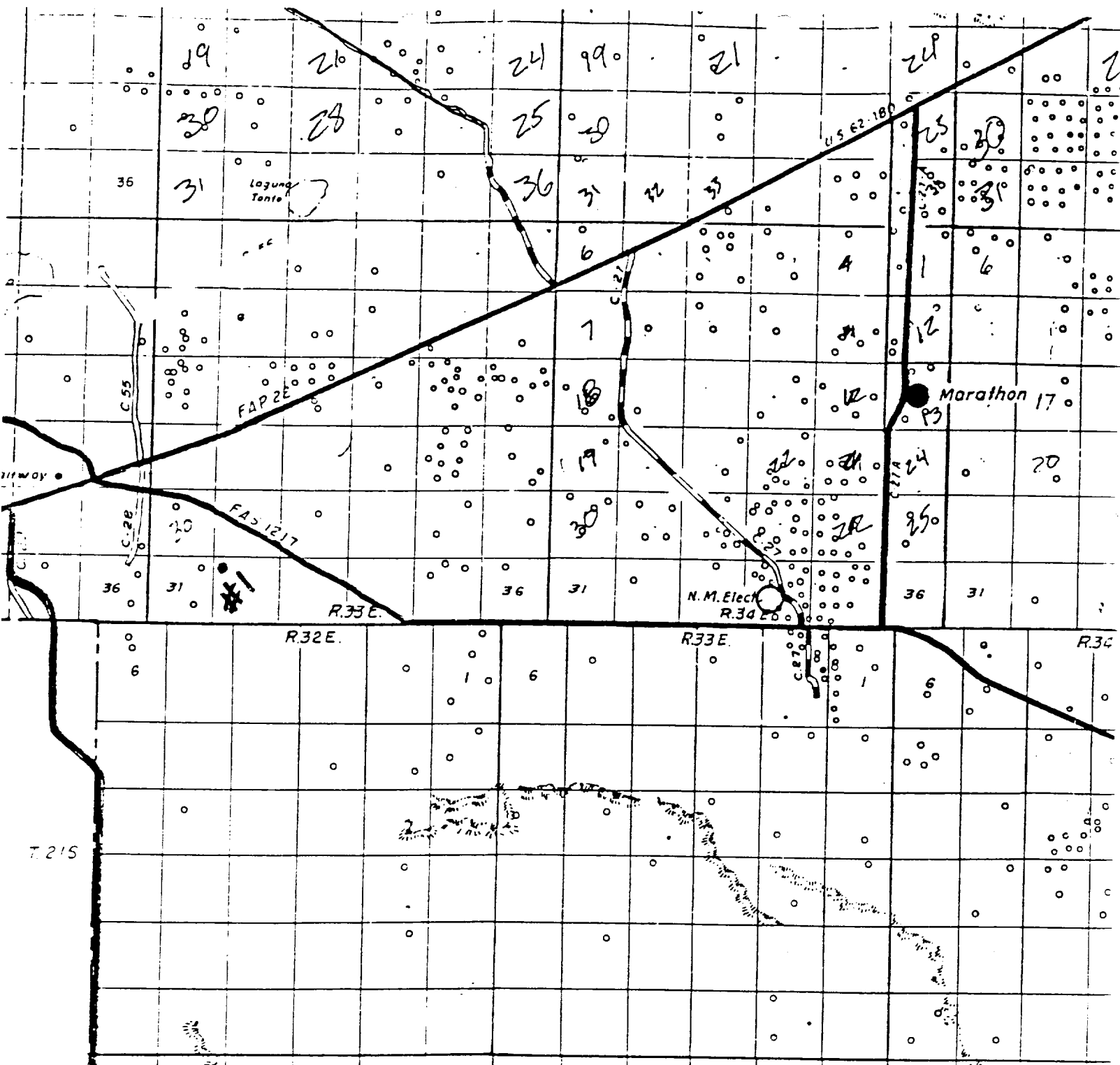
Survey Date: 09-09-99

Scale: 1" = 1000'

Date: 09-13-99

Bass Enterprises
Production Co.





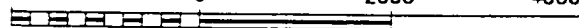
BASS ENTERPRISES PROD. CO.
 EXXON "32" STATE #1
 660' FNL & 660' FWL
 Sec. 32, T-20-S, R-33-E,
 Lea County, New Mexico.

SCALE: 1"=2 MILES

BASIN SURVEYS

P.O. BOX 1786-HOBBS, NEW MEXICO

2000' 0 2000' 4000 Feet



W.O. Number: 9326	Drawn By: K. GOAD	Survey Date: 09-09-99	Sheet 1 of 1 Sheets
-------------------	-------------------	-----------------------	---------------------





September 2, 1999

Bass Enterprises Production Co.
201 Main St.
Fort Worth, TX 76102-3131
Attention: Mr. J. Wayne Bailey

Re: Exxon "32" State No. 1
Section 32, T-20-S, R-33-E
Lea County, New Mexico

Dear Mr. Bailey:

Mississippi Potash, Inc. offers no objection to the drilling of the proposed Exxon "32" State No. 1 well by Bass Enterprises Production Co.

Sincerely,

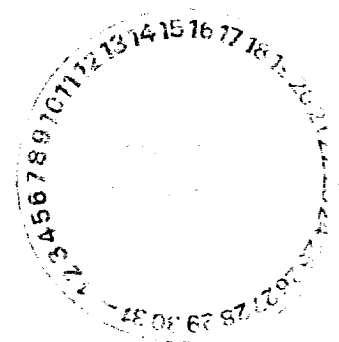


Jill Farnsworth
Chief Mine Engineer

Cc: Ms. Lori Wrotenbery
Director
Oil Conservation Division
2040 South Pacheco
Santa Fe, NM 87505

Mr. Chris Williams
District Supervisor
Oil Conservation Division
P.O. Box 1980
Hobbs, NM 88241

P.O. Box 101 • 1996 Potash Mines Road • Carlsbad, New Mexico 88220
Phone (505) 887-5591 • FAX (505) 887-0705



13363

T20S-R32E

T20S-R33E

24

19

20

21

NM-0554862

M-651-9

NM-47021

T21S-R32E

T21S-R31E

Bass Enterprises Production Co.

HAT MESA AREA
Lea County, New Mexico

Mississippi Potash Leases

DATE: 8-16-99 SCALE: 1" = 3000'
DEPT.: Land INTER. BY: W. Carlin FILE: Plat-MPR.dwg DRAFTED BY: P. Ortiz

GETTY OIL
N. BILBREY 18-1 FED. 14523

YATES
UNION A.S. FED. (SWO)
O 8610

FRANKS (HAWKINS)
UNION FED.
14385

BEPCO
HAT MESA
14307

REDSTONE
GOVERNMENT H. COM.
14374

GETTY OIL
NORTH BILBREY 7 FED.
14320

8

9

10

12

18

17

