

District I  
1625 N. French Dr., Hobbs, NM 88240  
District II  
811 South First, Artesia, NM 88210  
District III  
1000 Rio Brazos Road, Aztec, NM 87410  
District IV  
2040 South Pacheco, Santa Fe, NM 87505

State of New Mexico  
Energy Minerals and Natural Resources

Form C-101  
Revised March 17, 1999

Oil Conservation Division  
2040 South Pacheco  
Santa Fe, NM 87505

Submit to appropriate District Office  
State Lease - 6 Copies  
Fee Lease - 5 Copies

☐ AMENDED REPORT

APPLICATION FOR PERMIT TO DRILL, RE-ENTER, DEEPEN, PLUGBACK, OR ADD A ZONE

<sup>1</sup> Operator Name and Address Matador Operating Company 8340 Meadow Rd., #158 Dallas, TX 75231		<sup>2</sup> OGRID Number 014245
		<sup>3</sup> API Number 30-025-34720
<sup>3</sup> Property Code 006602	<sup>5</sup> Property Name Lea AQ State	<sup>6</sup> Well No. 13

<sup>7</sup> Surface Location

UL or lot no.	Section	Township	Range	Lot Idn	Feet from the	North/South line	Feet from the	East/West line	County
J	29	19S	35E		1650'	South	2310'	East	Lea

<sup>8</sup> Proposed Bottom Hole Location If Different From Surface

UL or lot no.	Section	Township	Range	Lot Idn	Feet from the	North/South line	Feet from the	East/West line	County

<sup>9</sup> Proposed Pool 1 Pearl San Andres, West	<sup>10</sup> Proposed Pool 2
--	-------------------------------

<sup>11</sup> Work Type Code N	<sup>12</sup> Well Type Code O	<sup>13</sup> Cable/Rotary Rotary	<sup>14</sup> Lease Type Code S	<sup>15</sup> Ground Level Elevation 3751'
<sup>16</sup> Multiple No	<sup>17</sup> Proposed Depth 6050'	<sup>18</sup> Formation San Andres	<sup>19</sup> Contractor Not determined	<sup>20</sup> Spud Date

<sup>21</sup> Proposed Casing and Cement Program

Hole Size	Casing Size	Casing weight/foot	Setting Depth	Sacks of Cement	Estimated TOC
12-1/4	8-5/8	24#	425	165 sx	Surface
7-7/8"	5-1/2"	15.5#	6050	800 sx	Surface

<sup>22</sup> Describe the proposed program. If this application is to DEEPEN or PLUG BACK, give the data on the present productive zone and proposed new productive zone.

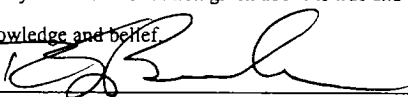
Describe the blowout prevention program, if any. Use additional sheets if necessary.

Drill 6050' San Andres test. Drill 12-1/4" hole to 425' and run 8-5/8" casing.  
Circulate cement to surface. NU double ram BOP and test to 1000 psi. Drill  
7-7/8" hole to TD of 6050'. Log well and run 5-1/2" casing and cement to surface.

Permit Expires 12/31/2000  
Date Issued 11/14/99

<sup>23</sup> I hereby certify that the information given above is true and complete to the best of my knowledge and belief.

Signature:



Printed name: R. F. Burke

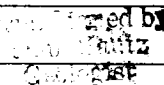
Title: Vice President

Date:

Phone:  
214-987-7119

OIL CONSERVATION DIVISION

Approved by:



Title:

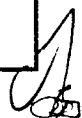
Approval Date:

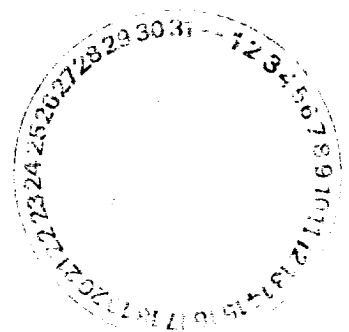
Expiration Date:

Conditions of Approval:

Attached ☐

ICJ





DISTRICT I  
P. O. Box 1980  
Hobbs, NM 88241-1980

State of New Mexico  
Energy, Minerals, and Natural Resources Department

Form C-102  
Revised 02-10-94

Instructions on back

DISTRICT II  
P. O. Drawer DD  
Artesia, NM 88211-0719

Submit to the Appropriate  
District Office  
State Lease - 4 copies  
Fee Lease - 3 copies

DISTRICT III  
1000 Rio Brazos Rd.  
Aztec, NM 87410

**OIL CONSERVATION DIVISION**  
P. O. Box 2088  
Santa Fe, New Mexico 87504-2088

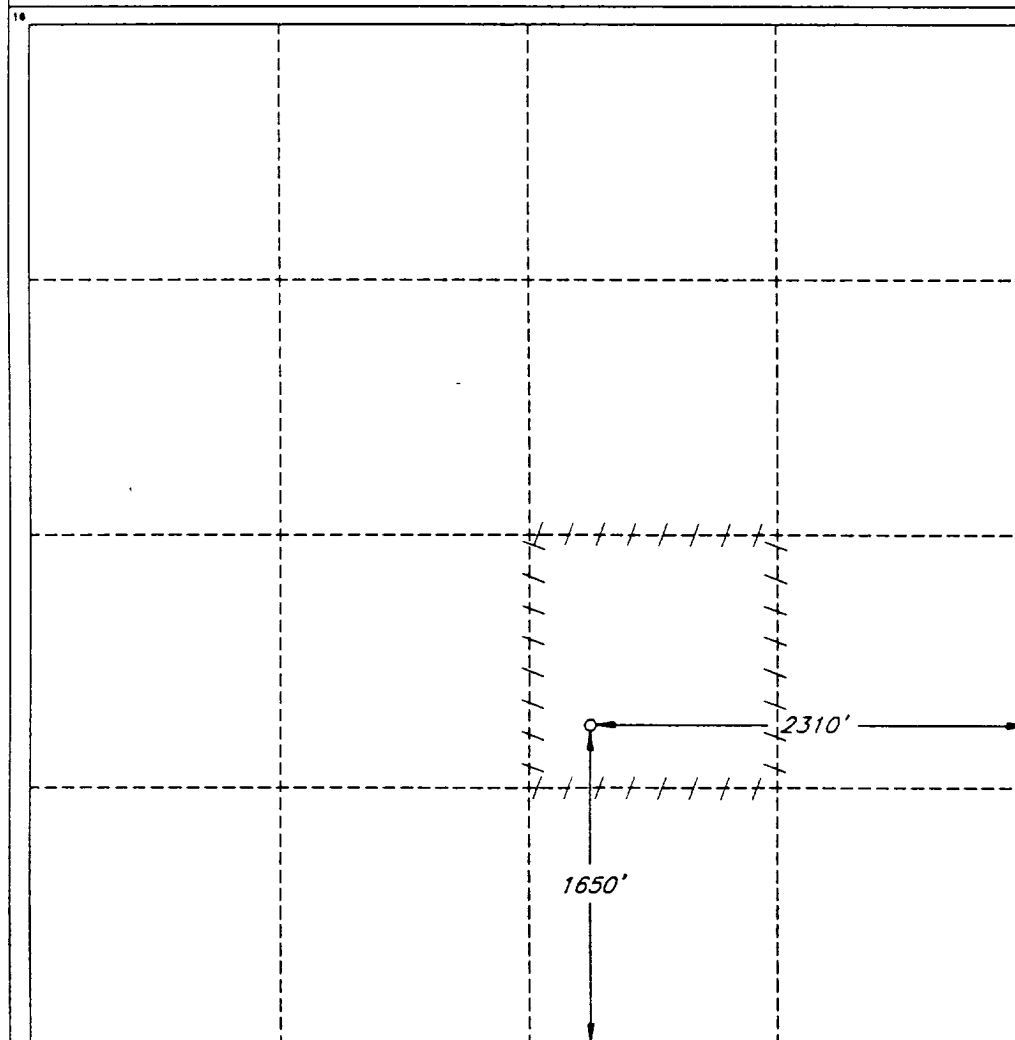
☐ AMENDED REPORT

DISTRICT IV  
P. O. Box 2088  
Santa Fe, NM 87507-2088

**WELL LOCATION AND ACREAGE DEDICATION PLAT**

1 API Number <b>3D-025-34720</b>		2 Pool Code <b>49820</b>		3 Pool Name <b>Pearl, San Andres West</b>					
4 Property Code <b>006602</b>		5 Property Name <b>LEA "AQ" STATE</b>						6 Well Number <b>13</b>	
7 OGRID No. <b>014245</b>		8 Operator Name <b>MATADOR OPERATING COMPANY</b>						9 Elevation <b>3751</b>	
10 SURFACE LOCATION									
UL or lot no. <b>J</b>	Section <b>29</b>	Township <b>19 SOUTH</b>	Range <b>35 EAST, N.M.P.M.</b>	Lot Ida	Feet from the	North/South line	Feet from the	East/West line	County <b>LEA</b>
					<b>1650'</b>	<b>SOUTH</b>	<b>2310'</b>	<b>EAST</b>	
"BOTTOM HOLE LOCATION IF DIFFERENT FROM SURFACE"									
UL or lot no.	Section	Township	Range	Lot Ida	Feet from the	North/South line	Feet from the	East/West line	County
12 Dedicated Acres <b>40</b>		13 Joint or Infill		14 Consolidation Code		15 Order No.			

NO ALLOWABLE WELL BE ASSIGNED TO THIS COMPLETION UNTIL ALL INTERESTS HAVE BEEN  
CONSOLIDATED OR A NON-STANDARD UNIT HAS BEEN APPROVED BY THE DIVISION



**OPERATOR CERTIFICATION**

I hereby certify that the information  
contained herein is true and complete  
to the best of my knowledge and belief.

Signature  
*[Signature]*

Printed Name  
**R. F. Burke**

Title  
**Vice President**

Date

**SURVEYOR CERTIFICATION**

I hereby certify that the well  
location shown on this plat was  
plotted from field notes of actual  
surveys made by me or under  
my supervision, and that the  
same is true and correct to the  
best of my belief.

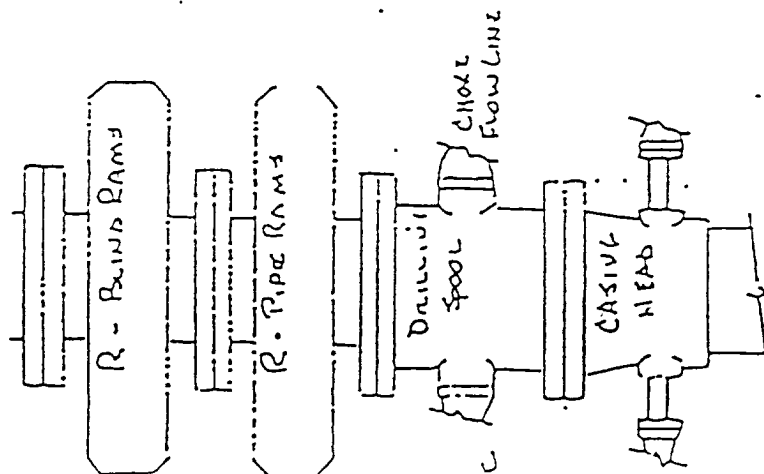
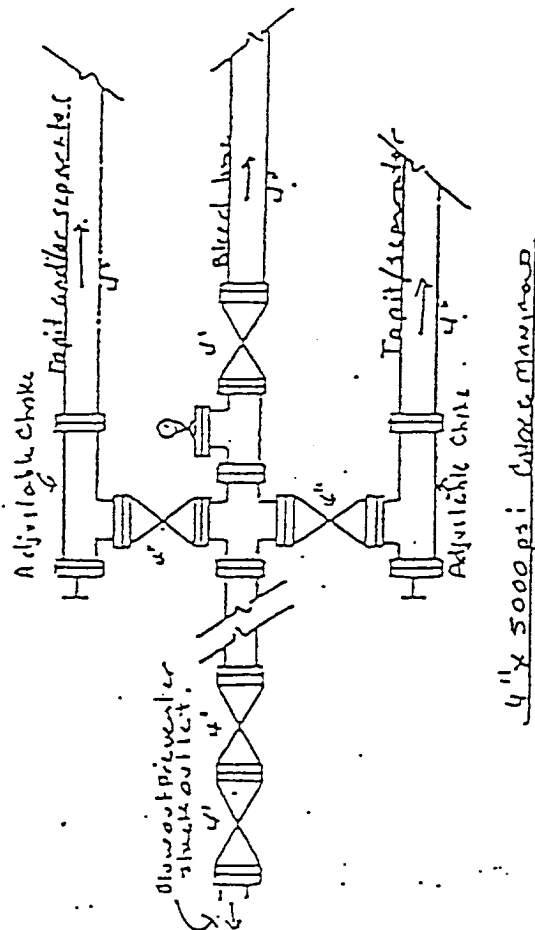
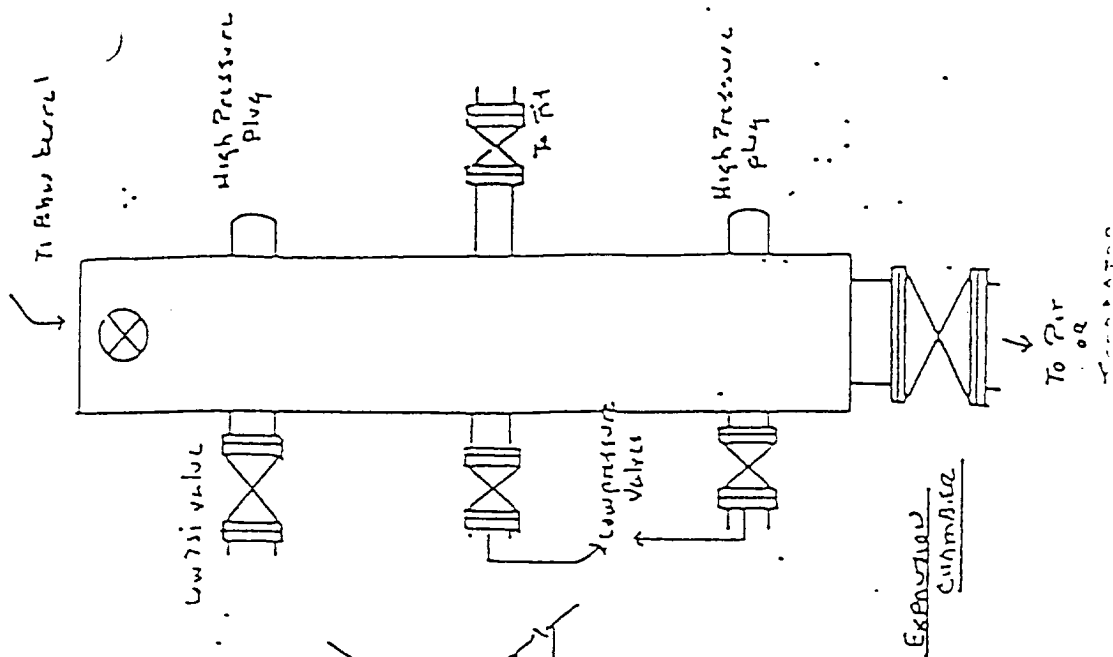
Date of Survey  
**SEPTEMBER 21, 1999**

Signature and Seal of  
Professional Surveyor

*[Signature]*  
**V. LYNN BEZNER**  
**NO. 7920**  
**SEP 23 1999**  
**V. BEZNER**  
**S.P.S. #7920**  
**JOB #65362 / 71 NW / V.H.B.**



Blowout Preventer  
 Matador Operating Company  
 Lea AQ State #13  
 1650 FSL-2310 FEL  
 Sec 29, T19S, R35E  
 Lea County, New Mexico



5000 PSI  
 WORKING PRESSURE

ELF  
\_\_\_\_\_  
ABOVE DATE DOES NOT  
INDICATE WHEN  
CONFIDENTIAL LOGS  
WILL BE RELEASED

