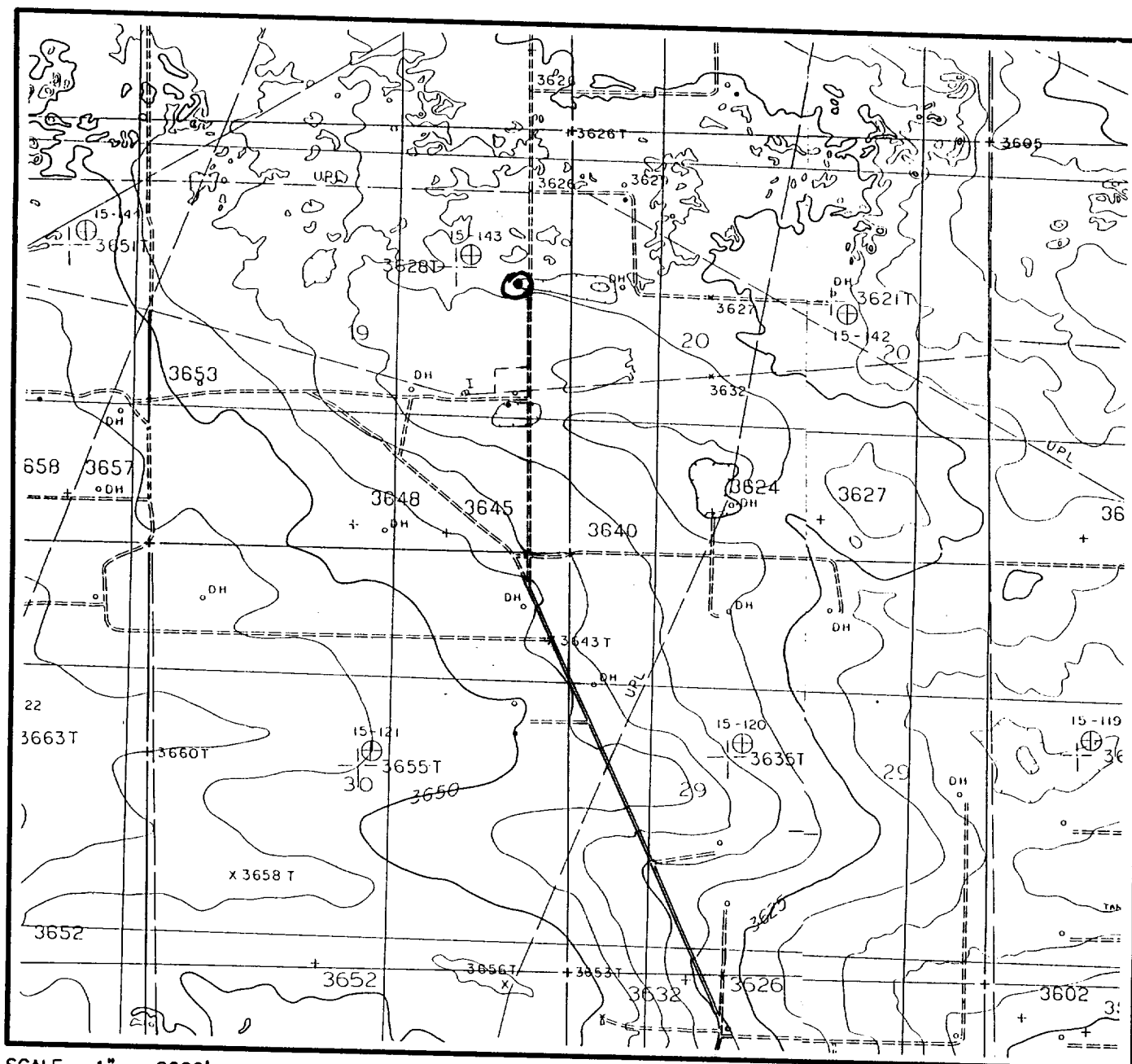


LOCATION & ELEVATION VERIFICATION MAP



SCALE : 1" = 2000'

CONTOUR INTERVAL 5'

SECTION 19 TWP 20-S RGE 36-E

SURVEY NEW MEXICO PRINCIPAL MERIDIAN

COUNTY EDDY STATE NM

DESCRIPTION 1980' FNL & 660' FEL

ELEVATION 3630'

OPERATOR XERIC OIL & GAS COMPANY

LEASE _____ LISA STATE #3

U.S.G.S. TOPOGRAPHIC MAP

MONUMENT SW, NEW MEXICO

SCALED LAT. _____ N 32°31'00"

LONG. _____ W 103°25'00"



This location has been very carefully staked on the ground according to the best official survey records, maps, and other data available to us.

Review this plot and notify us immediately of any possible discrepancy.

TOPOGRAPHIC LAND SURVEYORS

Surveying & Mapping for the Oil & Gas Industry

1307 N. HOBART
PAMPA, TX. 79065
(800) 658-6382

6709 N. CLASSEN BLVD.
OKLAHOMA CITY, OK. 73116
(800) 654-3219

2903 N. BIG SPRING
MIDLAND, TX. 79705
(800) 767-1653