

District I

1625 N. French Dr., Hobbs, NM 88240

District II

811 South First, Artesia, NM 88210

District III

1000 Rio Brazos Rd., Aztec, NM 87410

District IV

2040 South Pacheco, Santa Fe, NM 87505

State of New Mexico
Energy, Minerals & Natural ResourcesOIL CONSERVATION DIVISION
2040 South Pacheco
Santa Fe, NM 87505

Form C-101

Revised March 12, 1999

Submit to Appropriate District Office

State Lease - 6 Copies

Fee Lease - 5 Copies

☐ AMENDED REPORTAPPLICATION FOR PERMIT TO DRILL, RE-ENTER, DEEPEN **PLUGBACK**, OR ADD A ZONE

¹ Operator Name and Address. Louis Dreyfus Natural Gas Corporation 14000 Quail Springs Parkway, Suite 600 Oklahoma City, OK 73134		² OGRID Number 025773
		³ API Number 30-025-34911
⁴ Property Code 25303	⁵ Property Name Toro 34 State Com	⁶ Well No. 1

⁷ Surface Location

UL or lot no.	Section	Township	Range	Lot Idn	Feet from the	North/South line	Feet from the	East/West line	County
F	34	19S	35E		1650	North	1930	West	Lea

⁸ Proposed Bottom Hole Location If Different From Surface

UL or lot no.	Section	Township	Range	Lot Idn	Feet from the	North/South line	Feet from the	East/West line	County
<i>Alkin Ranch</i> Proposed Pool 1 <i>Southwest Scharb</i> (Wolfcamp)					¹⁰ Proposed Pool 2				

¹¹ Work Type Code P	¹² Well Type Code O	¹³ Cable/Rotary R	¹⁴ Lease Type Code S	¹⁵ Ground Level Elevation 3703
¹⁶ Multiple No	¹⁷ Proposed Depth 11,090	¹⁸ Formation Wolfcamp	¹⁹ Contractor	²⁰ Spud Date

²¹ Proposed Casing and Cement Program

Hole Size	Casing Size	Casing weight/foot	Feet	Sacks of Cement	Estimated TOC
17 1/2"	13 3/8"	54.5 #	641	480 sks	Surface
12 1/4"	9 5/8"	36#	5387	2470 sks	Surface
7 7/8"	5 1/2"	17#	13257	1170 sks	7480

²² Describe the proposed program. If this application is to DEEPEN or PLUG BACK give the data on the present productive zone and proposed new productive zone. Describe the blowout prevention program, if any. Use additional sheets if necessary.

1. Wire set CIBP @ 12,790'. Dump bail 35' of cement. (Abandon Morrow perfs 12,826 - 12,828)

2. Perforate Wolfcamp from 10,762' - 11,090'.

3. Test, Evaulate, Frac, put well on pump.

Received verbal approval 4-25-00.

Permit Expires 1 Year From Approval
Date Unless Drilling Underway

Plugback

²³ I hereby certify that the information given above is true and complete to the best of my knowledge and belief.

Signature:

Carla Christian

Printed name:

Carla Christian

Title:

Regulatory Technician

Date:

5-10-00

Phone:

(405) 749-5263

OIL CONSERVATION DIVISION

Approved by: ORIGINAL SIGNED BY CHRIS WILLIAMS
DISTRICT I SUPERVISOR

Title:

Approval Date:

Expiration Date:

Conditions of Approval:

Attached ☐

5
C
5

DISTRICT I
P.O. Box 1980, Hobbs, NM 88240

DISTRICT II
P.O. Drawer DD, Artesia, NM 88210

DISTRICT III
1000 Rio Brazos Rd., Aztec, NM 87410

State of New Mexico
Energy, Minerals and Natural Resources Department

OIL CONSERVATION DIVISION

P.O. Box 2088
Santa Fe, New Mexico 87504-2088

Form C-102
Revised February 10, 1994
Instruction on back
Submit to Appropriate District Office
State Lease - 4 Copies
Fee Lease - 3 Copies

☐ AMENDED REPORT

WELL LOCATION AND ACREAGE DEDICATION PLAT

API Number 30-025-34911	Pool Code 96989	Pool Name Klein Ranch Wolfcamp
Property Code 25303	Property Name TORO 34 STATE COM.	Well Number 1
GRID No. 025773	Operator Name LOUIS DREYFUS NATURAL GAS CORPORATION	Elevation 3703'

Surface Location

UL or lot No. F	Section 34	Township 19 S	Range 35 E	Lot Idn	Feet from the 1650	North/South line NORTH	Feet from the 1930	East/West line WEST	County LEA
--------------------	---------------	------------------	---------------	---------	-----------------------	---------------------------	-----------------------	------------------------	---------------

Bottom Hole Location If Different From Surface

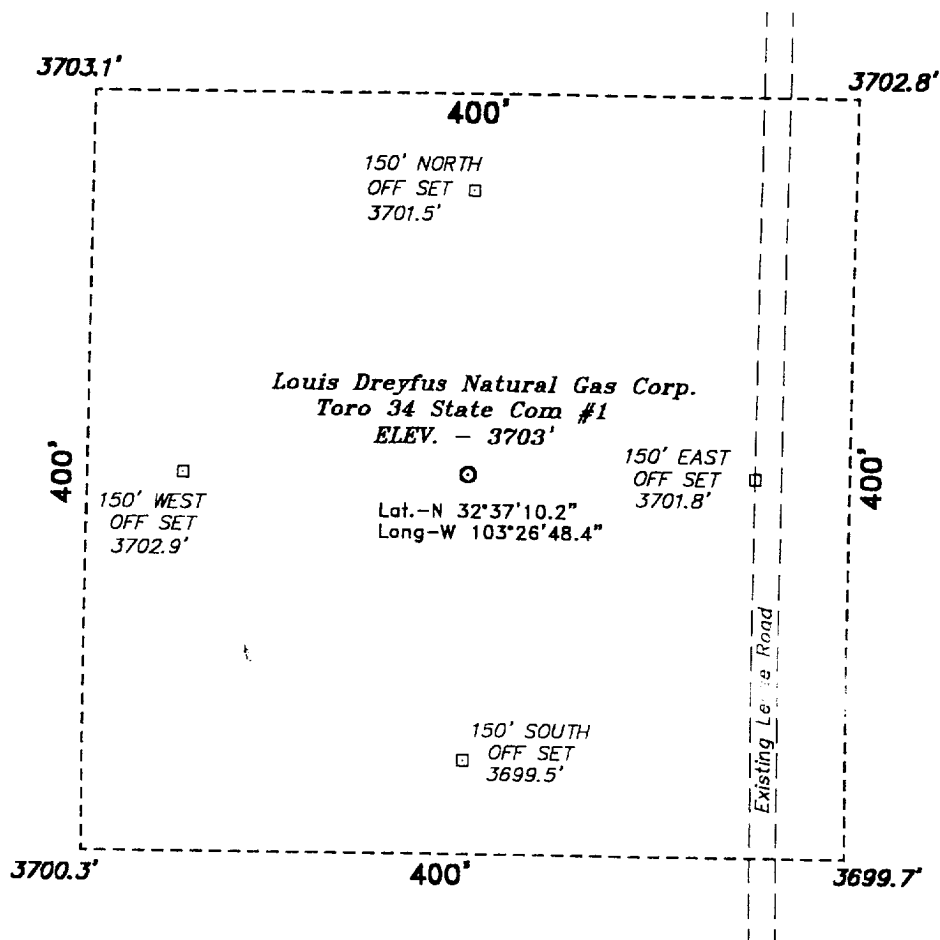
UL or lot No.	Section	Township	Range	Lot Idn	Feet from the	North/South line	Feet from the	East/West line	County
---------------	---------	----------	-------	---------	---------------	------------------	---------------	----------------	--------

Dedicated Acres 40	Joint or Infill No	Consolidation Code	Order No.
-----------------------	-----------------------	--------------------	-----------

NO ALLOWABLE WILL BE ASSIGNED TO THIS COMPLETION UNTIL ALL INTERESTS HAVE BEEN CONSOLIDATED
OR A NON-STANDARD UNIT HAS BEEN APPROVED BY THE DIVISION

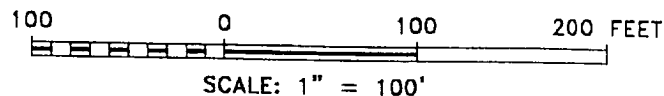
State Lease E 5840		OPERATOR CERTIFICATION I hereby certify the the information contained herein is true and complete to the best of my knowledge and belief. Carla Christian Signature Carla Christian Printed Name Regulatory Technician Title 5/10/00 Date	
		SURVEYOR CERTIFICATION I hereby certify that the well location shown on this plat was plotted from field notes of actual surveys made by me or under my supervision, and that the same is true and correct to the best of my belief. January 31, 2000 Date Surveyed Signature of Surveyor Professional Surveyor NEW MEXICO 7977 W.O. No. 00526 Certificate No. Gary L. 7977	

**SECTION 34, TOWNSHIP 19 SOUTH, RANGE 35 EAST, N.M.P.M.,
LEA COUNTY, NEW MEXICO.**



Directions to Location:

FROM ARKANSAS JUNCTION, GO WEST ON US 62-180, 8.5 MILES. TURN SOUTH ON CALICHE ROAD, GO 1.8 MILES. THEN EAST, 0.9 MILES, SOUTH 0.3 MILES, EAST, 0.9 MILES, SOUTH 0.3 MILES, EAST 0.5 MILES, AND NORTH 0.3 MILES TO LOCATION.



BASIN SURVEYS P.O. BOX 1786-HOBBS, NEW MEXICO

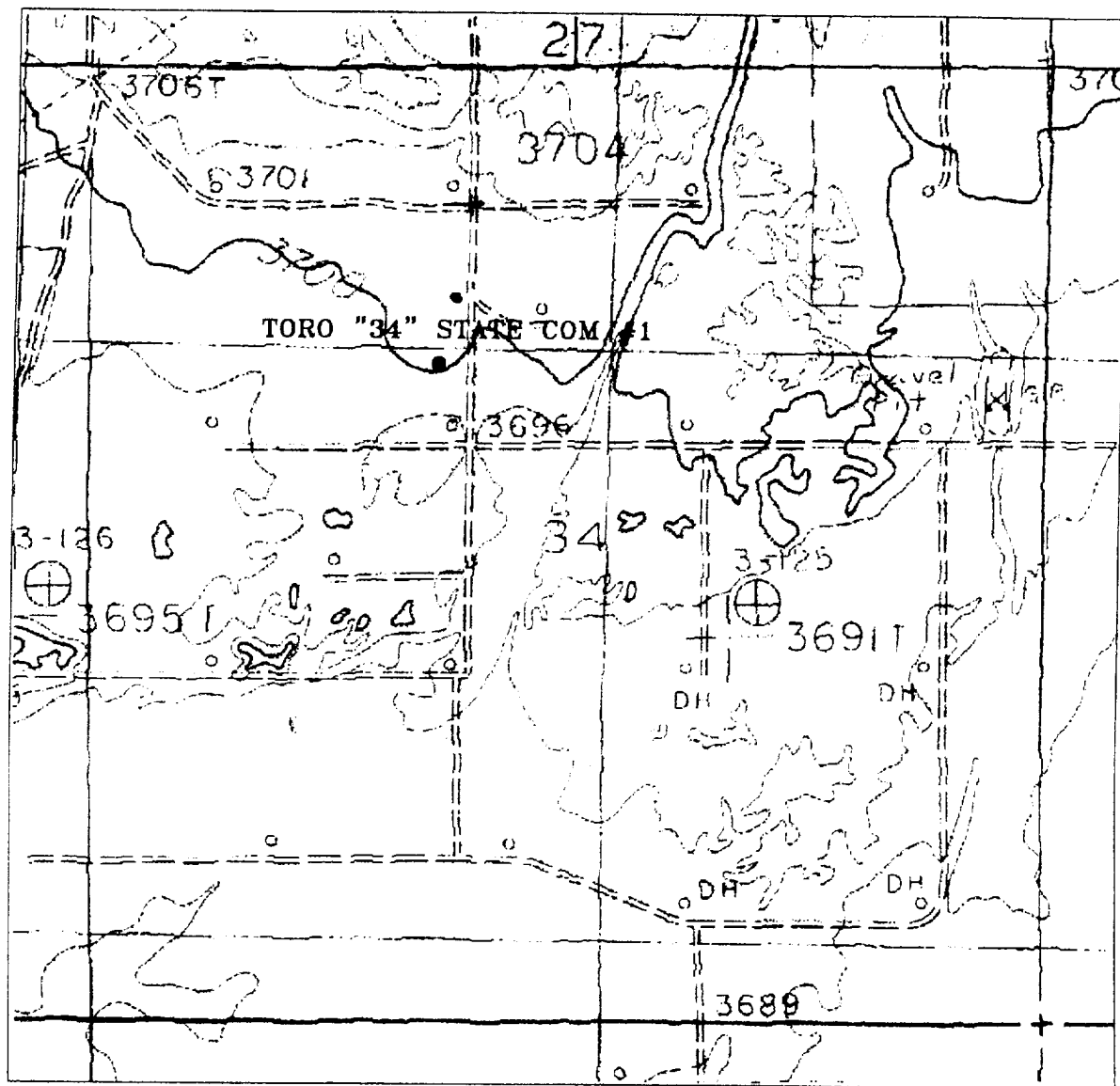
W.O. Number: 0052

Drawn By: K. GOAD

Louis Dreyfus Natural Gas Corp.

REF: Toro 34 State Com #1/ Well Pad Topo

THE TORO 34 STATE COM No. 1 LOCATED 1650' FROM THE NORTH LINE AND 1930' FROM THE WEST LINE OF SECTION 34, TOWNSHIP 19 SOUTH, RANGE 35 EAST, N.M.P.M., LEA COUNTY, NEW MEXICO.



TORO "34" STATE COM #1
 Located at 1650' FNL and 1930' FWL
 Section 34, Township 19 South, Range 35 East,
 N.M.P.M., Lea County, New Mexico.

basin
surveys

P.O. Box 1786
 1120 N. West County Rd.
 Hobbs, New Mexico 88241
 (505) 393-7316 - Office
 (505) 392-3074 - Fax

W.O. Number: 0052AA - KJG #123

Survey Date: 01-31-2000

Scale: 1" = 1000'

LOUIS DREYFUS
NATURAL GAS
CORPORATION